



How to Recycle Holiday Lights

Donate first! If you have working holiday lights, consider taking them to Goodwill or Salvation Army or posting them for free on [Freecycle](#), [Facebook Marketplace](#) or [Nextdoor](#).

Holiday lights should NOT go in your curbside recycling. These “tangles” get wrapped around recycling equipment and jam the screens at the processor. Please recycle your holiday lights correctly through these drop-off and mail-in programs.

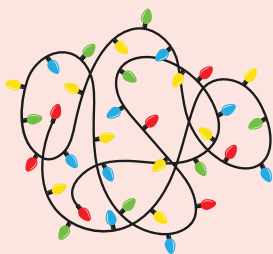
Drop-off

The [Residents' Convenience Center](#) at Alpha Ridge Landfill recycles holiday lights and other electronics year-round.

Alpha Ridge Landfill
2350 Marriottsville Rd
Marriottsville, MD 21104

[MOM's](#) holds an annual Holiday Lights Recycling Drive in the winter. They accept both working and non-working lights. Visit their [website](#) for more details.

MOM's
7351 Assateague Dr. #190
Jessup, MD 20794



Mail-in

[HolidayLED.com](#) offers a mail-in recycling program and offers a coupon for new lights! Box up your lights and send them to:

Holiday LEDs Recycling
W227 N6225 Sussex Road, Door #12
Sussex, WI 53089

[Christmas Light Source](#) also offers a mail-in recycling program and a coupon for 10% off! Box up your lights and send them to:

Christmas Light Source
Recycling Program
4313 Elmwood Drive
Benbrook, Tx 76116

