

# **APPENDIX C**

## **Map Atlas**

### ***Corridor Characteristics***



# US 1 Safety Evaluation on Bicyclist and Pedestrian Safety

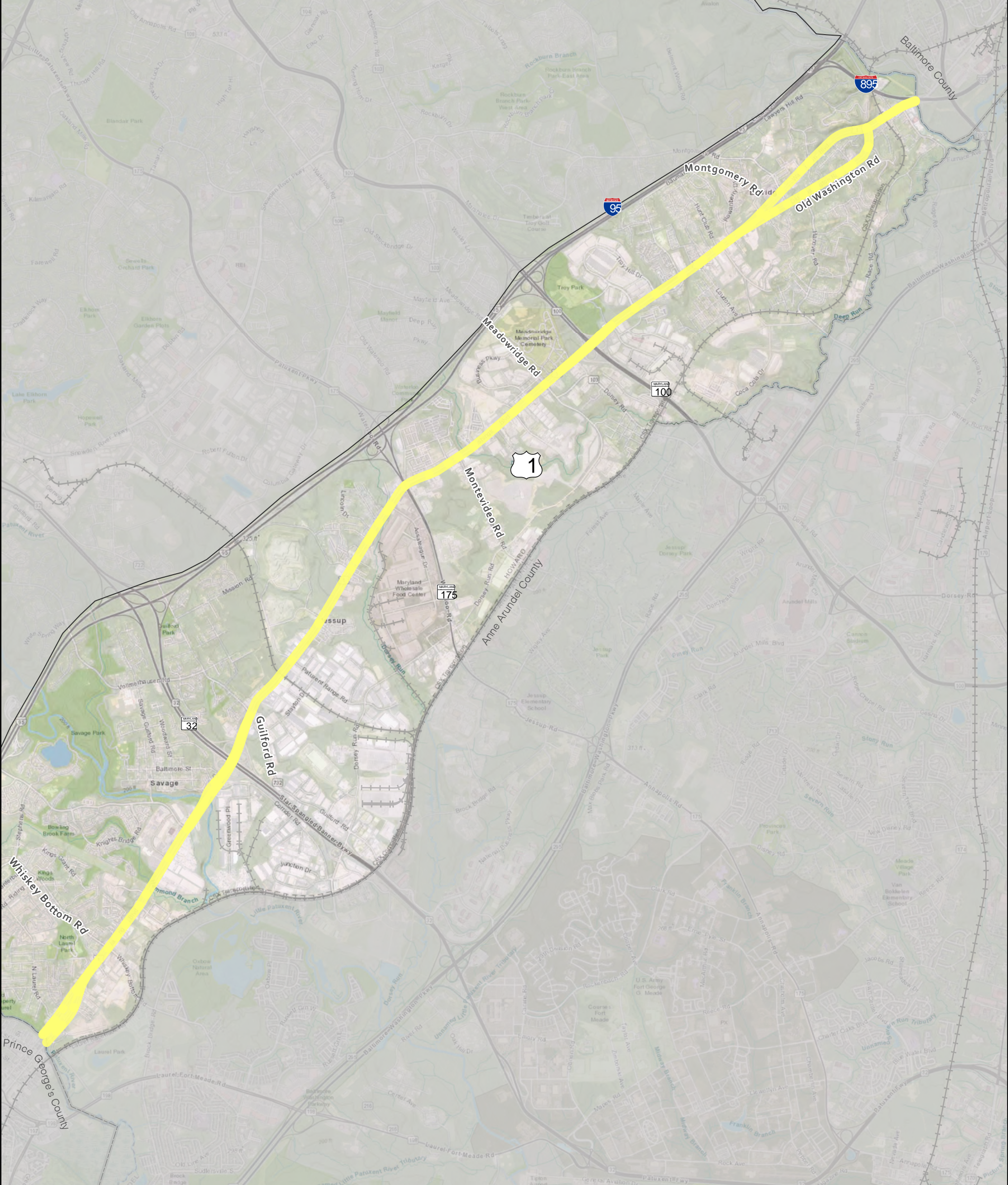
## Corridor Characteristics Table of Contents



1. Study Corridor
2. Existing Zoning
3. Land Use
4. Planned Development (with key)
5. Proposed Bicycle Facilities
6. Average Annual Daily Traffic
7. Average Travel Speeds Northbound
8. Average Travel Speeds Southbound
9. Total Entering Intersection Vehicle Volumes
10. Bus Routes and Ridership
11. Existing Pedestrian Infrastructure (four maps)
12. Daily Intersection Pedestrian Volumes
13. Pedestrian Generators (four maps)
14. Bus Stop Schematic (two maps)



# US 1 Safety Evaluation on Bicycle and Pedestrian Safety Study Corridor



## LEGEND

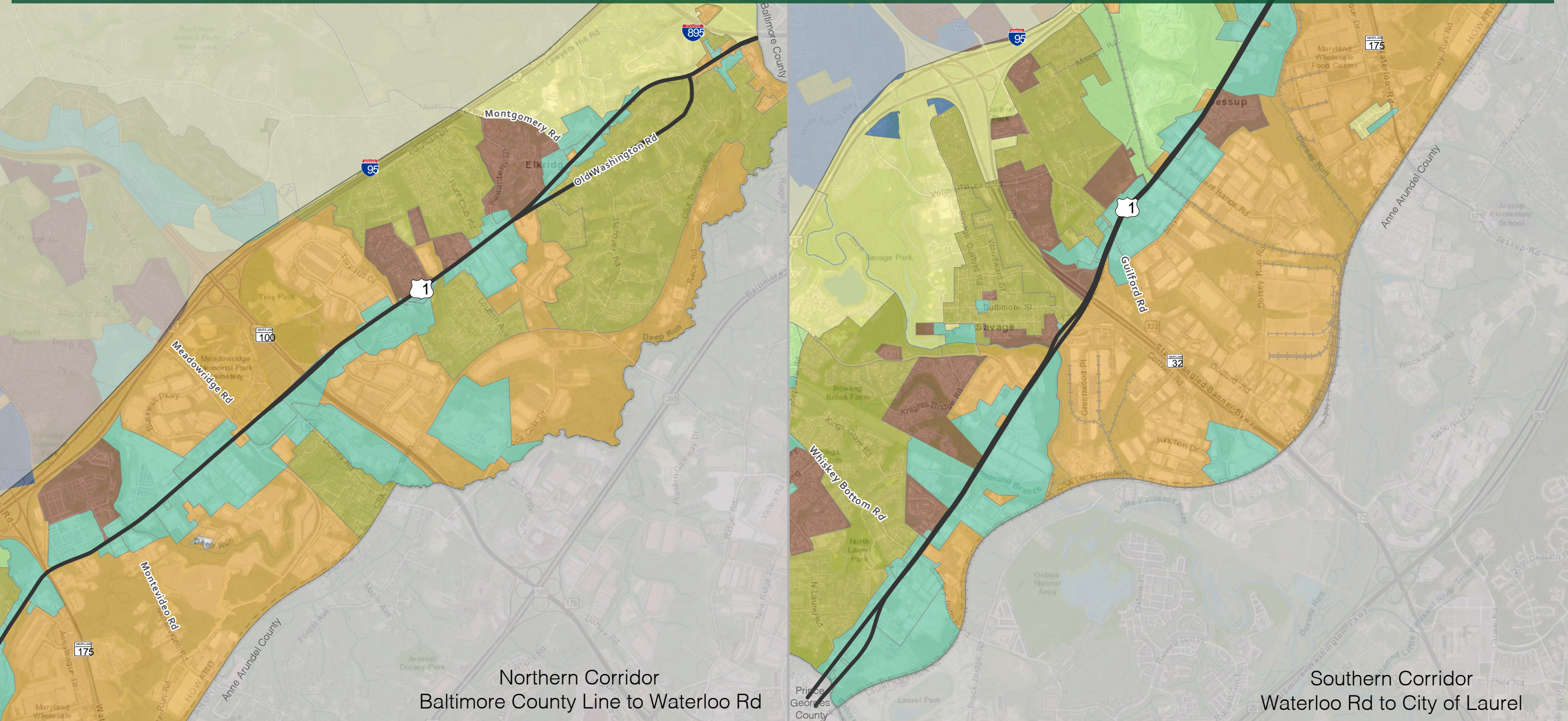
 Study Corridor





# US 1 Safety Evaluation on Bicyclist and Pedestrian Safety

## Existing Zoning



LEGEND

- Commercial
- High Density Residential
- Low Density Residential
- Mixed Use
- Industrial
- Medium Density Residential
- NewTown

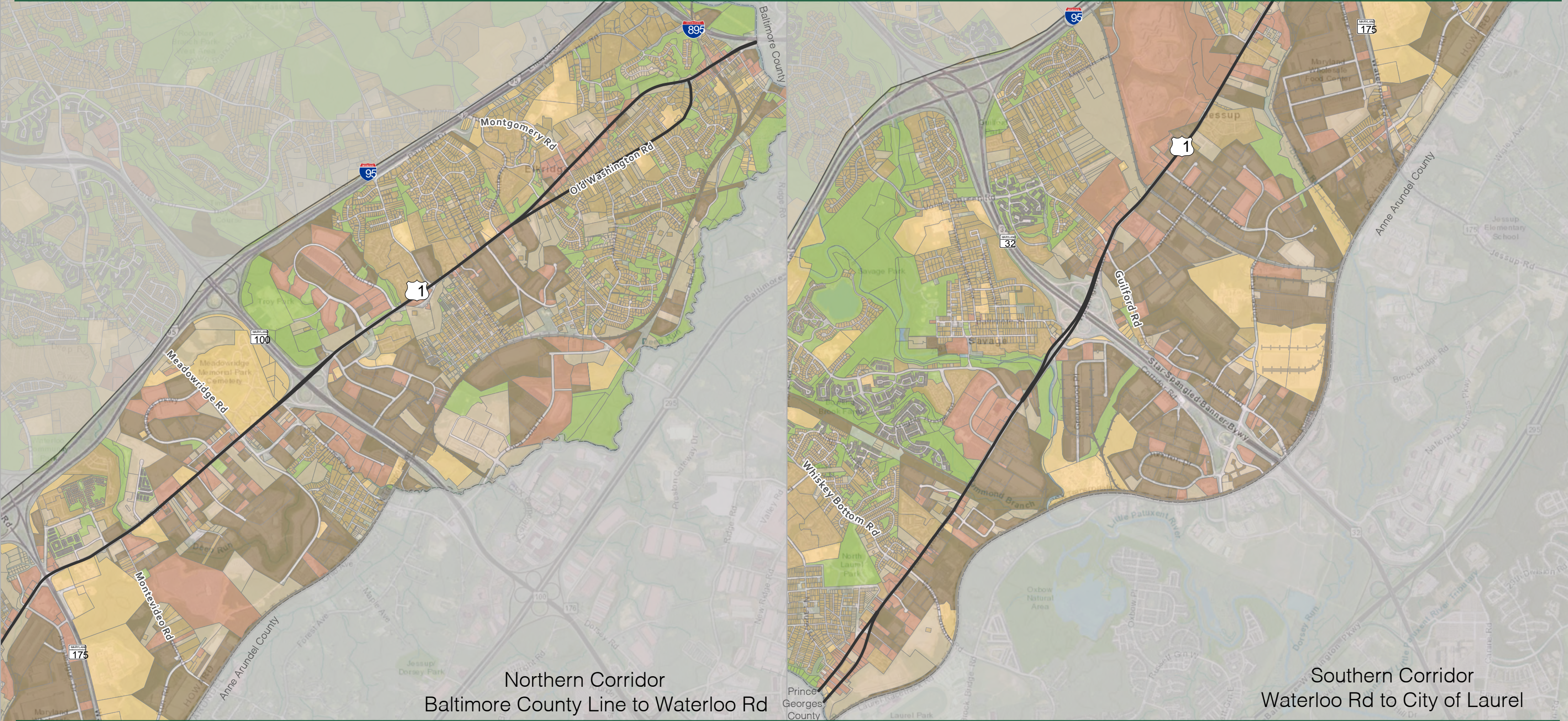
Data Source: Zoning Data is from Howard County GIS, updated May 2017.





# US 1 Safety Evaluation on Bicyclist and Pedestrian Safety

## Land Use



### LEGEND

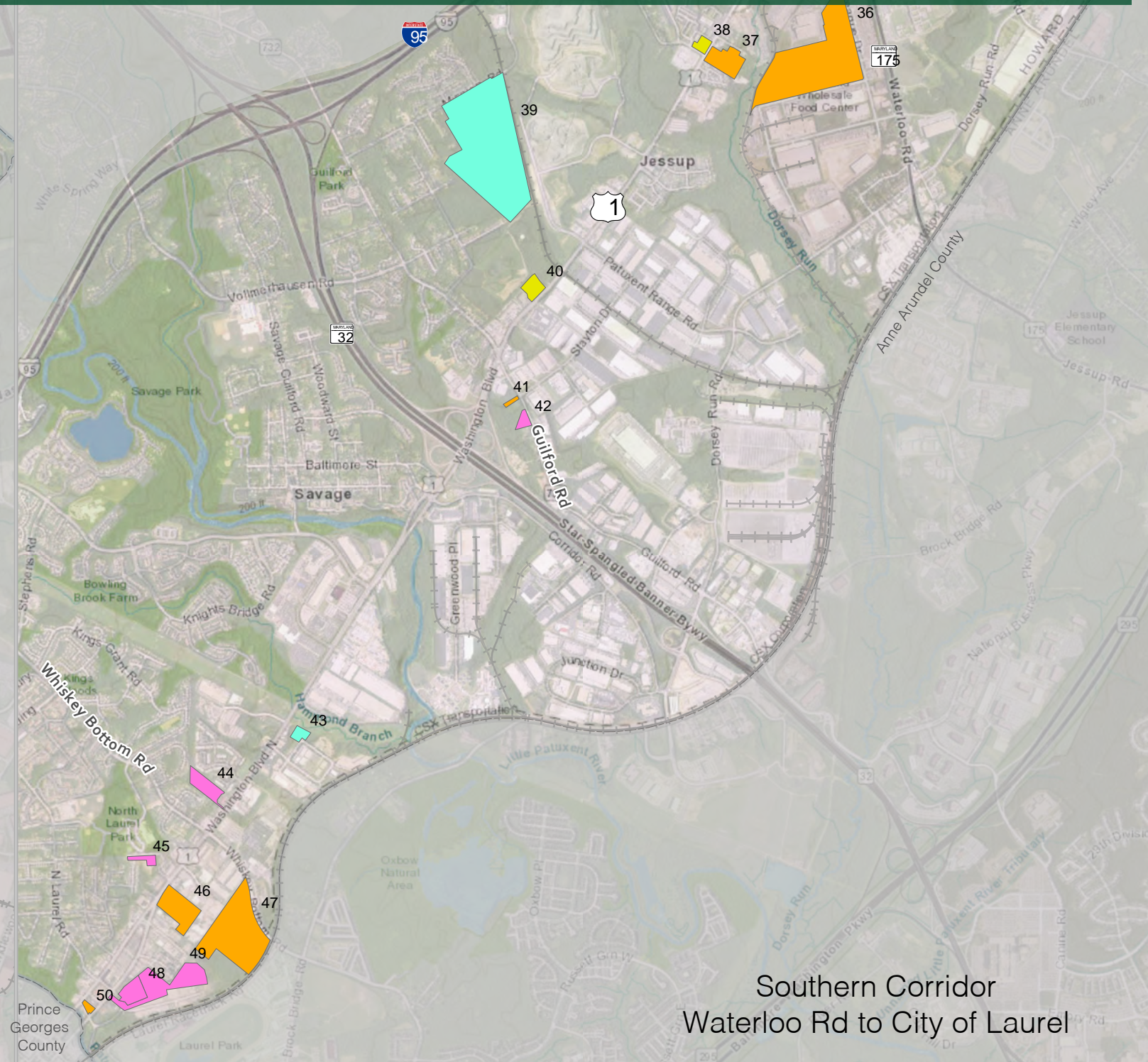
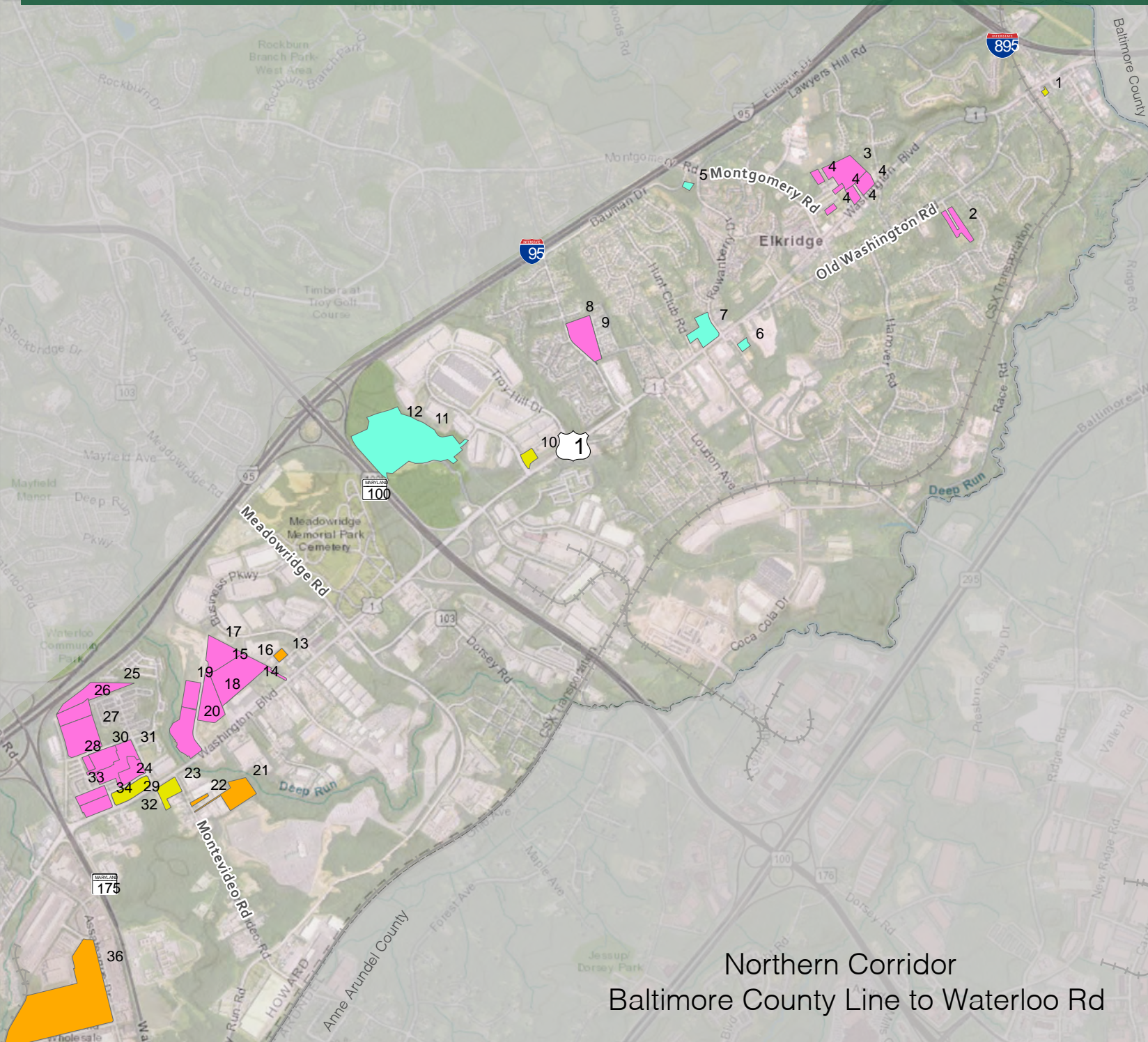
- Industrial
- Commercial
- Undeveloped
- Residential
- Institutional
- Parks, Open Space and Recreation

Data Source: Land Use data is from Howard County GIS, updated 2017.





# US 1 Safety Evaluation on Bicyclist and Pedestrian Safety Planned Developments



LEGEND

Industrial

Residential

Office

Retail

Data Source: Howard County GIS, 2017.



Labels Key	Name	Location	Acres	Zoning	Developer	Address	Latest Decision	Phased	Process	Year	UseType	Planning Area	Category
1	PATUXENT ENGINEERING	WASHINGTON BLVD AT RAILROAD AVE	0.37	B-1	5782 MAIN STREET, LLC	5741 Main Street	Signed	No	No	2017	[1:Restaurant, Carry-Out:Retail], [1:Office:Office/Service], [1:Restaurant:Retail]	ELKRIDGE	Retail
2	PECORARO PROPERTY (AUGUSTINE VALLEY)	SE SIDE OLD WASHINGTON RD	4.12	R-12			Signed	No	No	2013	[20:SFA:Residential]	ELKRIDGE	Residential
3	ELKRIDGE CROSSING - PHASES 3 & 4	W SIDE OF US RT 1 1050 FT N OF MONTGOMERY RD	8.07	CAC-CLI	ELKRIDGE DEVELOPERS, LLC	8775 Cloudleap Court, #224	Voided	No	No	0	[44:SFA:Residential], [12:SFA-MIHU:Residential], [62:APT:Residential], [18:APT-MIHU:Residential]	ELKRIDGE	Residential
4	ELKRIDGE CROSSING - PHASE 2	W SIDE OF US RT 1 1050 FT N OF MONTGOMERY RD	8.32	CAC-CLI	ELKRIDGE DEVELOPERS, LLC	8775 Cloudleap Court, #224	Voided	No	No	0	[54:SFA:Residential], [26:APT:Residential], [6:APT-MIHU:Residential], [12:SFA-MIHU:Residential], [0:Retail, Site:Retail], [1:Hotel:Office/Service], [0:Restaurant:Retail], [1:Office:Office/Service]	ELKRIDGE	Residential
5	Elkridge Fire Station FIRST THOUSAND PLUS SITE		7.5		EVFD								Office
6	IMPROVEMENT	NE SIDE OF PINE AVE	0.947	CE-CLI	AROMIRE	6157 PINE AVE	Voided	No	No	0	[1:Day, Care:Office/Service]	ELKRIDGE	Office
7	HCLS ELKRDIGE BRANCH AND SENIOR CTR	WASHINGTON BLVD AT ROWANBERRY DR	6.9537	B-1	HOWARD COUNTY DEPT. OF PUBLIC WORKS	9250 BENDIX RD	Signed	No	No	2016	[1:Public, Library:Govt, &, Inst], [1:Senior, Center:Govt, &, Inst]	ELKRIDGE	Office
8	DUCKETT'S RIDGE - PH. 1 & 2	E SIDE DUCKETT' S LN S OF LORI LN	10.03	R-12	BRANTLY DEVELOPMENT CORPORATION	7310 Esquire Court, Suite 14, Third Floor	Voided	No	No	0	[46:SFA-Age, Restricted:Residential], [6:SFA-Age, Restricted-MIHU:Residential], [1:Community, Room/Bldg:Other]	ELKRIDGE	Residential
9	ELEMENTARY SCHOOL #41	E SIDE DUCKETT' S LN S OF LORI LN	10.03	R-12			Signed	No	No	2012	[1:School:Govt, &, Inst]	ELKRIDGE	Office
10	TROY HILL CORP CENTER PAR A-30	PARCEL WITHIN TROY HILL DR LOOP	2	B-2	TROY HILL SQUARE, LLC	6800 DEERPATH RD STE 100	Signed	No	No	2017	[1:Shopping, Center:Retail]	ELKRIDGE	Retail
11	Troy Park Phase I	TERMINUS OF MANSION LN	47.82	M-1	HOWARD COUNTY DEPARTMENT OR RECREATION AND PARKS SAME AS OWNER		Signed	No	No	2013	[1:Park:Govt, &, Inst]	ELKRIDGE	Office
12	TROY PARK - PHASE 2	TERMINUS OF MANSION LN	25.87	M-1	HOWARD CO DEPT OF REC & PARKS	7120 OAKLAND MILLS RD	Signed	No	No	2014	[1:Park:Govt, &, Inst]	ELKRIDGE	Office
13	WASHINGTON MANOR PARK	NORTH OF ROOSEVELT BLVD. ABOUT 300' NE OF CEMETERY ROAD	1.87	CE-CLI	HIGHLAND REAL ESTATE INVESTMENTS LLC	12745 LINE KILN ROAD	Voided	No	No	0	[1:Manufacturing:Manu/Ind]	ELKRIDGE	Industrial
14	MORRIS PLACE	WEST SIDE OF US RT 1 SOUTH SIDE OF CEMETERY LN	8.424	CAC-CLI	BEAZER HOMES CORPORATION	8965 GUILFORD RD STE 290	Signed	No	No	2016	[29:SFA:Residential], [9:OS:Residential], [5:SFA-MIHU:Residential]	ELKRIDGE	Residential

15	MORRIS PLACE	WEST SIDE OF US RT 1 SOUTH SIDE OF CEMETERY LN	5.984	CAC- CLI	BEAZER HOMES CORP.	8965 Guilford Road, Suite 290	Signed	No	No	2016	[68:SFA:Residential], [11:SFA- MIHU:Residential], [9:OS:Residential]	ELKRIDG E	Residential
16	MORRIS PLACE	WEST SIDE OF US RT 1 SOUTH SIDE OF CEMETERY LN	14.44	CAC- CLI	BEAZER HOMES CORPORATION	8965 GUILFORD RD STE 290	Signed	No	No	2015	[3:PARCEL:Residential], [8:SFA- MIHU:Residential], [45:SFA:Residential], [8:OS:Residential]	ELKRIDG E	Residential
17	BLUE STREAM TOWNS - SECTION 2	TERMINUS OF BLUE STREAM DR	7.6361	CAC- CLI	U. S. HOME CORPORATION	7035 Albert Einstein Drive, Suite 200	Signed	No	No	2015	[86:SFA:Residential], [19:SFA- MIHU:Residential]	ELKRIDG E	Residential
18	DORSET GARDENS BROMPTON HOUSE - (GROSVENOR HOUSE, PHASE II)	E OF BLUE STREAM DR W SIDE BLUE STREAM DR OPPOSITE SAGE AVE	8.12	CAC- CLI	U.S. HOME CORPORATION	10211 Wincopin Circle, Suite 300	Technicæ	No	No	0	[101:SFA:Residential], [24:SFA- MIHU:Residential]	ELKRIDG E	Residential
19			5.7698	CAC- CLI	BLUE STREAM 2 LLC	PO BOX 416	Signed	No	No	2015	[25:SFA:Residential], [132:APT:Residential], [36:APT- MIHU:Residential]	ELKRIDG E	Residential
20	Grosvenor House	W SIDE BLUE STREAM DR AT US RT 1	10.191	CAC- CLI	BLUE STREAM 1, LLC	PO BOX 416	Signed	No	No	2012	[226:APT:Residential], [28:SFA:Residential], [1:Community, Room/Bldg:Other], [1:Maintenance, Bldg:Other]	ELKRIDG E	Residential
21	Gaulin Property	EAST OF MONTEVIDEO ROAD, SOUTH OF US 1	7.159	M-2	GAULIN PROPERTIES, LLC	7340 MONTEVIDEO RD	Signed	No	No	2012	[1:Warehouse/Office:Manu/Ind], [0:Warehouse:Manu/Ind]	ELKRIDG E	Industrial
22	EASTERN WATERPROOFING & RESTORATION	NORTH SIDE MONTEVIDEO 700' SOUTH OF WASHINGTON BLVD.	0.69	M-2			Voided	No	No	0	[1:Storm, Drainage, System:Other]	ELKRIDG E	Industrial
23	CVS/PHARMACY	WASHINGTON BLVD OPPOSITE PORT CAPITAL DR	4.04	B-1-CR	Maryland CVS Pharmacy, LLC	One CVS Drive	Signed	No	No	2016	[1:Pharmacy:Office/Service]	ELKRIDG E	Retail
24	HOWARD SQUARE	PORT CAPITAL DR AT WASHINGTON BLVD	5.46	CAC- CLI	ATAPCO HOWARD SQUARE II STATUTORY TRUST	10 E. BALTIMORE ST STE 1600	Technicæ	No	Yes	0	[1:Retail, Site:Retail], [266:APT:Residential], [78:APT- MIHU:Residential]	ELKRIDG E	Retail
25	Deep Falls aka Village Township Phase III-B, Area 2	N SIDE OF COVE POINT WAY	6.343	R-MH	MBI DEVELOPMENT COMPANY, INC.	725 Cuthbert Boulevard	Voided	No	No	0	[55:APT-MIHU:Residential], [25:APT:Residential], [1:Community, Room/Bldg:Other]	ELKRIDG E	Residential
26	NEW COLONY VILLAGE-PHASE 5	SE QUADRANT OF I-95 & MD RT 175	4.68	R-MH	CORRIDOR I LIMITED PARTNERSHIP	6800 Deerpath Road, Suite 100	Voided	No	No	0	[51:SFD:Residential]	ELKRIDG E	Residential
27	NEW COLONY VILLAGE-PHASE 5	SE QUADRANT OF I-95 & MD RT 175	14.17	R-MH	RTE 175 LLC	25 MAIN ST	Withdrav	No	No	0	[129:SFD:Residential]	ELKRIDG E	Residential
28	Buch Property	S SIDE OF PORT CAPITAL DR EAST OF SUSANS PASS	1.27	CAC- CLI	BUCH	13130 CLARKESVILLE PIKE	Voided	No	No	0	[2:SFA-MIHU:Residential], [15:SFA:Residential], [1:APT:Residential], [1:APT- MIHU:Residential],	ELKRIDG E	Residential
29	HOWARD SQUARE	N SIDE HEARTHSIDE WAY	4.47	CAC- CLI	ATAPCO HOWARD SQUARE II STATUTORY TRUST	1 South Street, Suite 2800	Signed	No	No	2016	[63:SFA:Residential], [20:SFA- MIHU:Residential]	ELKRIDG E	Residential
30	HOWARD SQUARE	NW QUADRANT OF PORT CAPITAL DRIVE AND US 1	5.47	CAC- CLI	ATAPCO HOWARD SQUARE II STATUTORY TRUST	One South Street, Suite 2800	Signed	No	No	2014	[77:SFA:Residential], [24:SFA- MIHU:Residential], [1:OS:Residential]	ELKRIDG E	Residential
31	Howard Square	W OF PORT CAPITAL DR N OF US RT 1	9.58	CAC- CLI	ATAPCO Howard Square II Business Trust	1 South Street, Suite 2800	Signed	No	No	2012	[43:SFA:Residential], [13:SFA- MIHU:Residential], [2:OS:Residential], [5:PARCEL:Residential]	ELKRIDG E	Residential

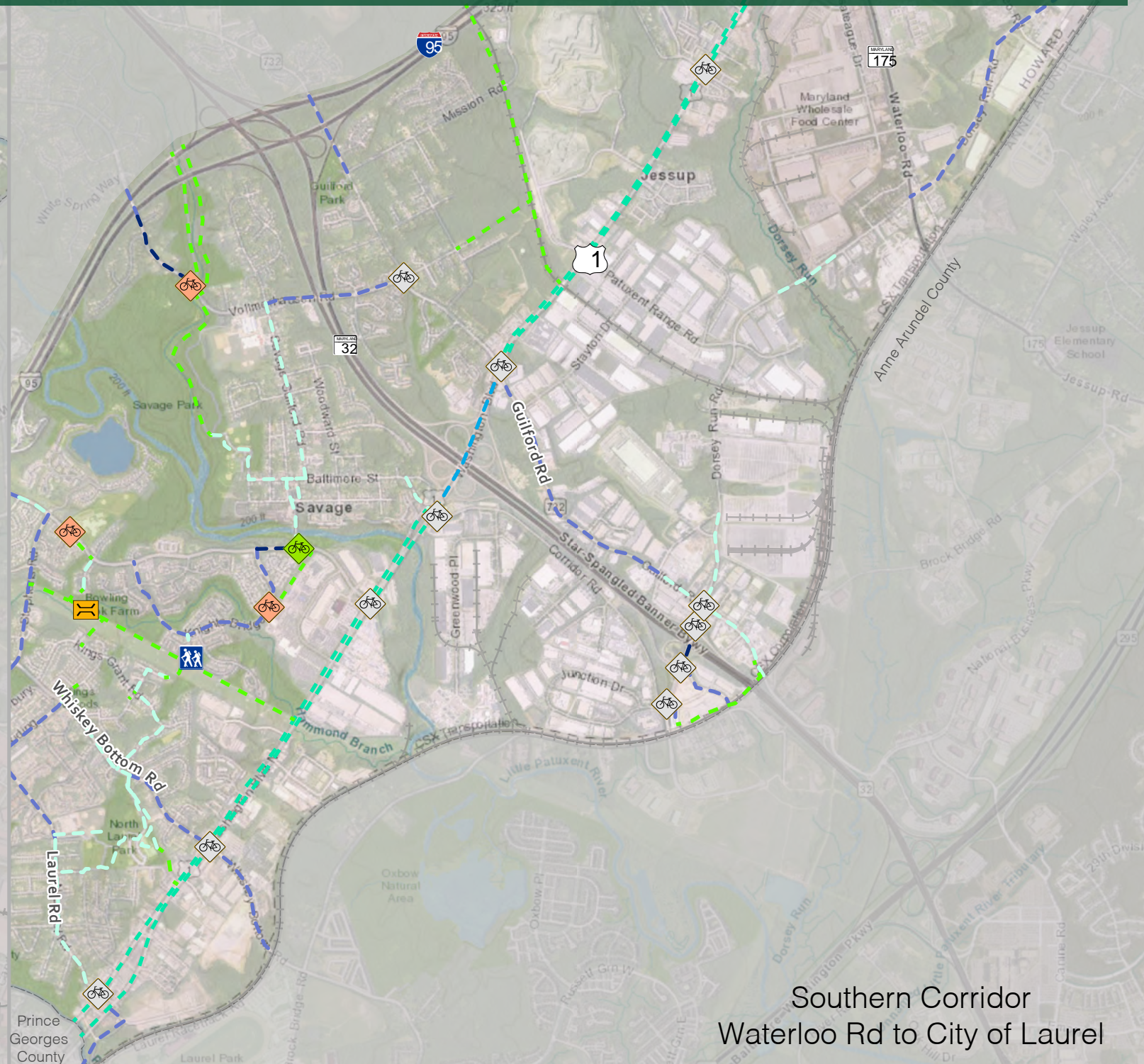
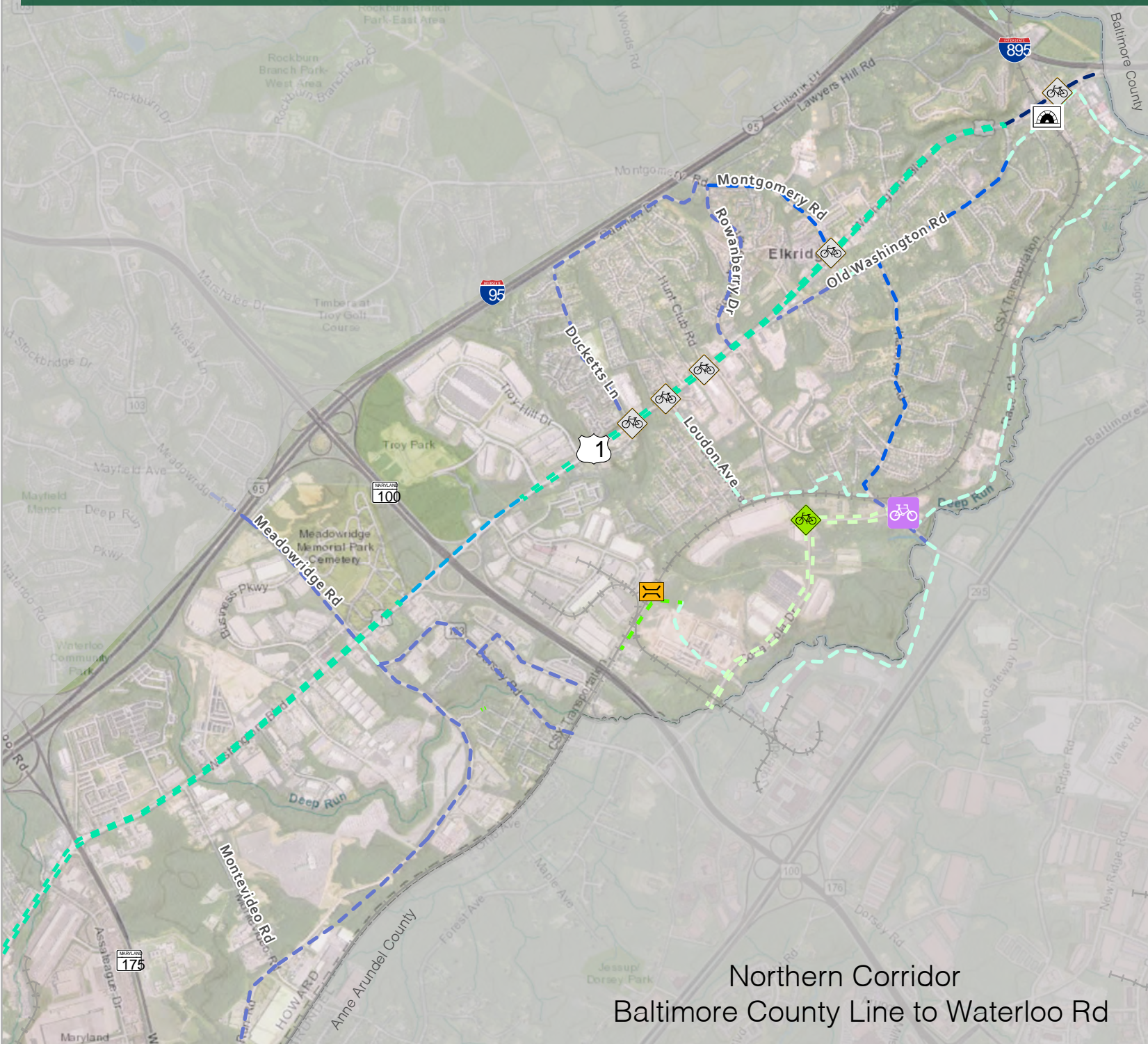


32	HOWARD SQUARE - PH. 8 & 9	PORT CAPITAL DR AT WASHINGTON BLVD	5.46	CAC-CLI	ATAPCO HOWARD SQUARE I BUSINESS TRUST	1 South Street, Suite 2800	Voided	No	No	0	[235:APT:Residential], [1:Retail, Site:Retail], [65:APT-MIHU:Residential]	ELKRIDG E	Residential
33	Howard Square	E OF PORT CAPITAL DR, NW OF US RT. 1	3.8	CAC-CLI	ATAPCO HOWARD SQUARE I BUSINESS TRUST	1 South Street, Suite 2800	Signed	No	No	2012	[42:SFA:Residential], [14:SFA-MIHU:Residential], [1:OS:Residential]	ELKRIDG E	Residential
34	HOWARD SQUARE PHASE 3 & 4	E OF PORT CAPITAL DR, NW OF US RT. 1	4.18	CAC-CLI	ATAPCO HOWARD SQUARE I BUSINESS TRUST	1 South Street, Suite 2800	Signed	No	No	2012	[299:APT:Residential]	ELKRIDG E	Residential
35	THE CEDARS EXTENDED	LINCOLN DR W OF ROUTE 1	1.62	R-SC	HARMONY BUILDERS, INC.	4228 COLUMBIA RD	Signed	No	No	2017	[6:SFD:Residential], [1:OS:Residential]	SOUTHEA ST	Residential
36	MARYLAND FOOD CENTER AUTHORITY PAR J	ASSATEAGUE DR AT RAPPAHANNOCK AVE	58.8959	M-2	MCA ASSATEAGUE HOLDINGS LLC	8601 ROBERT FULTON DR STE 200	Signed	No	No	2016	[1:Warehouse:Manu/Ind]	SOUTHEA ST	Industrial
37	ROUTE ONE BUSINESS PARK	TERMINUS OF FLEMING ST	7.81	M-2	JESSUP ROCK, LLC	6800 Deerpath Road, Suite 100	Voided	No	No	0	[0:Office:Office/Service], [1:Warehouse:Manu/Ind]	SOUTHEA ST	Industrial
38	MISSION PLACE	W SIDE OF RT 1 N OF MISSION RD	1.81	CAC-CLI	MISSION ROAD INVESTORS, LLC	2600 MIDWAY BRANCH DR	Voided	No	No	0	[1:Office:Office/Service], [0:Retail, Site:Retail]	SOUTHEA ST	Retail
39	Mission Rd School	South Side of Mission Rd west of CSX railroad	70		CHASE LAND LLC					2017			Office
40	COLUMBIA JUNCTION	NW SIDE US RT 1 N OF GUILFORD RD	3.68	B-2	Columbia Junction Dev, LLC	1811 North Rolling Road	Signed	No	No	2013	[1:Retail, Site:Retail], [1:Restaurant, Carry-Out:Retail]	SOUTHEA ST	Retail
41	HOWARD COUNTY DRC PARKING	W SIDE GUILFORD RD OPPOSITE STAYTON DR	0.61	CE-CLI-CR	HOWARD COUNTY HOUSING COMMISSION	6751 COLUMBIA GATEWAY DR 3RD FLR	No Decis	No	Yes	0	[1:Parking, Lot:Other]	SOUTHEA ST	Industrial
42	DAY RESOURCE CENTER	W SIDE GUILFORD RD E OF RT 1	3	CE-CLI-CR	VOLUNTEERS OF AMERICA, INC.	1660 DUKE ST	Signed	No	No	2016	[35:APT:Residential]	SOUTHEA ST	Residential
43	VICTORY TEMPLE - LAUREL	TERMINUS OF BURSA RD	1.9434	CE-CLI	THE RDEEMED CHRISTIAN CHURCH OF GOD, INC. (VICTORY TEMPLE) LAUREL, MARYLAND	13701 Old Annapolis Road	Signed	No	No	2013	[1:Religious, Facility:Govt, &, Inst]	SOUTHEA ST	Office
44	Beechcrest Apartments	NW SIDE US RT 1 N OF WHISKEY BOTTOM RD	5.742	R-MH	BEECHCREST DEVELOPMENT, LLC	5553 Broadwater lane	Voided	No	No	2013	[51:APT:Residential], [13:APT-MIHU:Residential]	SOUTHEA ST	Residential
45	PARK OVERLOOK	TERMINUS OF DECATUR & MEREDITH	7	R-SC	PARK OVERLOOK, LLC	9695 NORFOLK AVE	Signed	No	No	2014	[27:SFA:Residential]	SOUTHEA ST	Residential
46	NAPA WASHINGTON	E SIDE OF WASHINGTON BLVD N OF DAVIS LN	10.939	CE-CLI	GENUINE PARTS COMPANY	2999 CIRCLE 75 PARKWAY	Signed	No	No	2016	[1:Warehouse:Manu/Ind], [1:Office:Office/Service], [1:Retail, Site:Retail]	SOUTHEA ST	Industrial
47	COASTAL SUNBELT PRODUCE	S SIDE WHISKEY BOTTOM RD AT COUNTY LINE	33.711	TOD	WHISKEYSPEAK, LLC	100 West Road, Suite 304	Signed	No	No	2015	[1:Warehouse/Distribution:Manu/Ind], [1:Warehouse/Office:Manu/Ind]	SOUTHEA ST	Industrial
48	LAUREL PARK STATION	SE CORNER OF THE COUNTY	4.77	TOD	THE STRONACH GROUP	455 MAGNA DR	Submit F	No	Yes	0	[237:APT:Residential], [43:APT-MIHU:Residential], [1:Retail, Site:Retail]	SOUTHEA ST	Residential
49	LAUREL PARK STATION	SE CORNER OF THE COUNTY	14.96	TOD	THE STRONACH GROUP	455 MAGNA DR	Technica	No	Yes	0	[133:SFA:Residential], [54:APT:Residential], [10:APT-MIHU:Residential], [23:SFA-MIHU:Residential]	SOUTHEA ST	Residential
50	North Laurel Wastewater Pumping Station	SOUTHBOUND US RT 1 (SOUTH OF BALTO AVE)	0.7	CAC-CLI	L & R BUILDINGS, LLC	11404 GALT AVE	Signed	No	No	2012	[1:Wastewater, Pumping, Station:Govt, &, Inst]	SOUTHEA ST	Industrial



# US 1 Safety Evaluation on Bicyclist and Pedestrian Safety

## Proposed Bicycle Facilities



### LEGEND

#### On Road Proposed Facilities

- Sharrow
- Colored Bike Lane
- Bike Lane
- Climbing Lane
- Buffered Bike Lane
- Cycletrack One Way

#### Off Road Proposed Facilities

- Sidewalk with Bikes Permitted
- Shared Use Path

#### Proposed Access

- Bike Link
- Bridge
- Mid Block Xing
- On Road Xing
- Path Xing
- Trail Access
- Tunnel

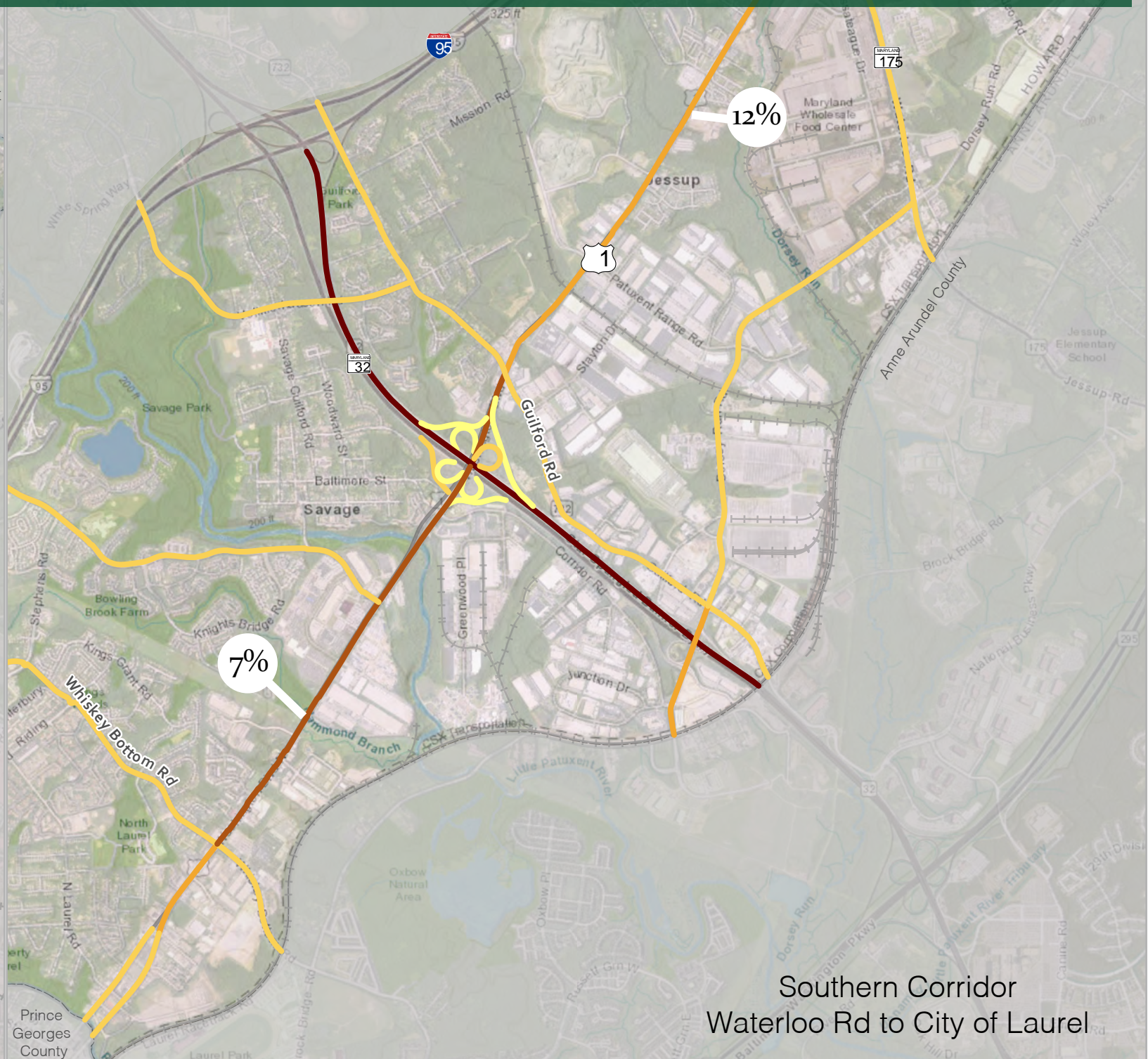
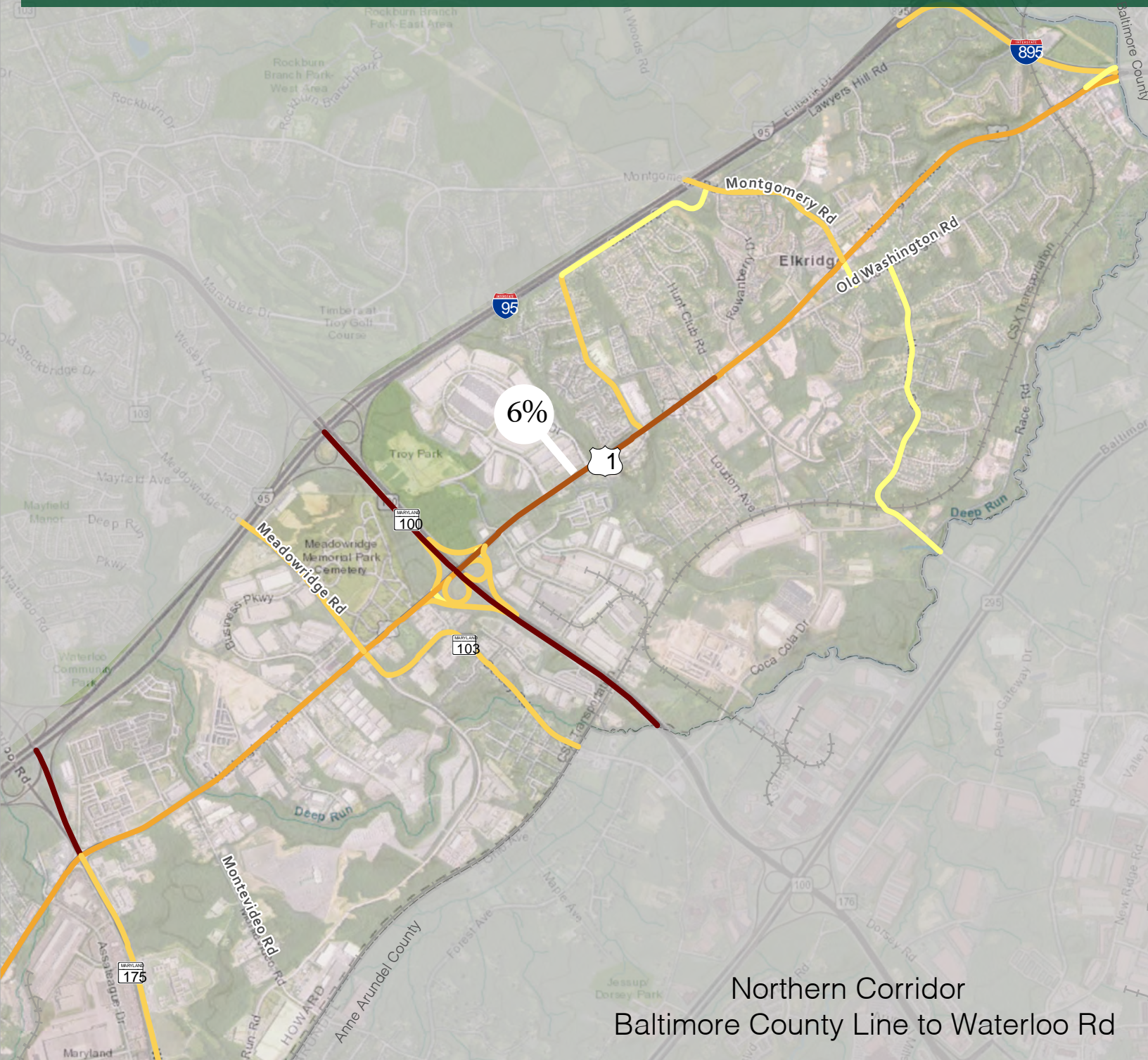
Data Source: Howard County GIS, 2017.



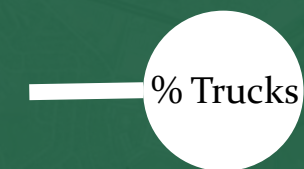


# US 1 Safety Evaluation on Bicyclist and Pedestrian Safety

## Average Annual Daily Traffic



### LEGEND



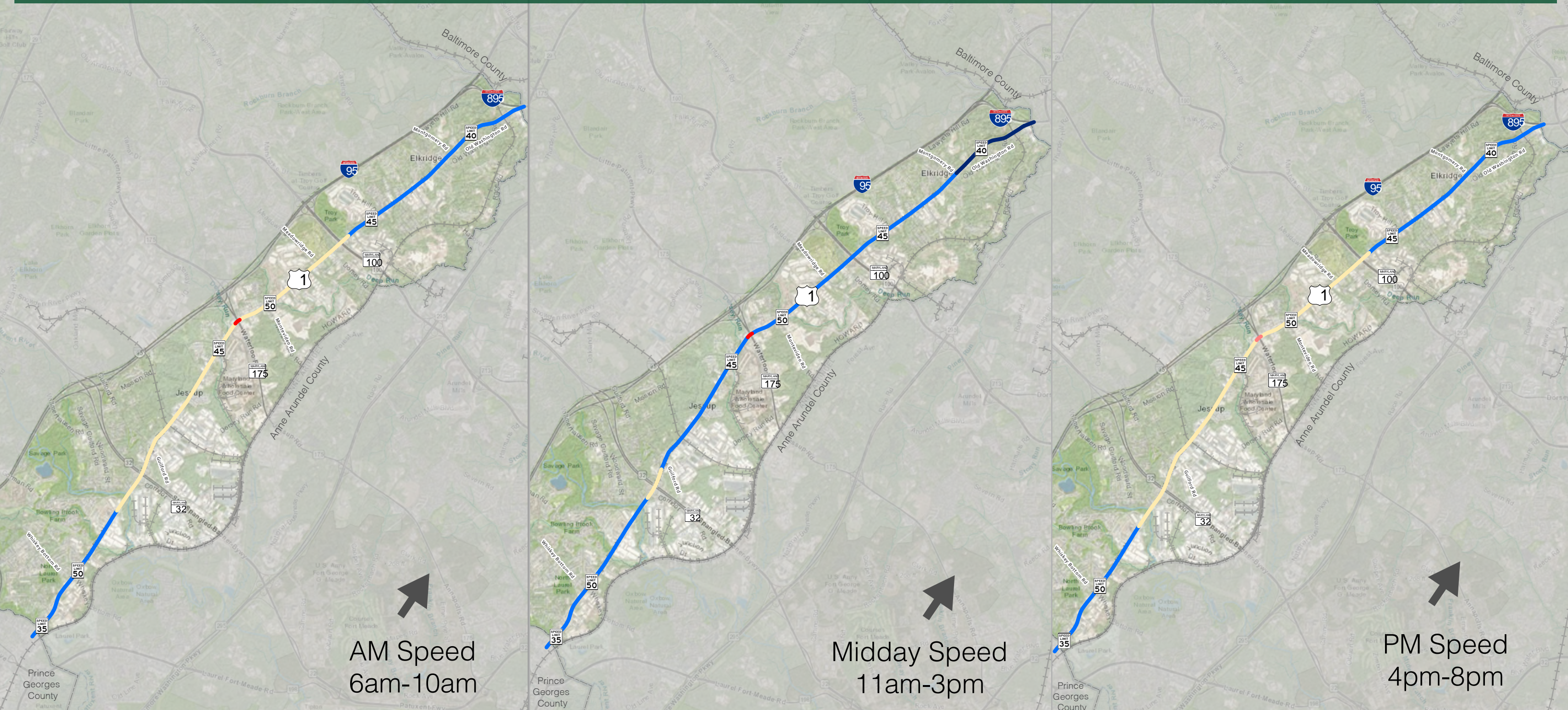
Data Source: Howard County  
Police Department ILEADS  
database, 2016.





# US 1 Safety Evaluation on Bicyclist and Pedestrian Safety

## Average Travel Speed Northbound



### LEGEND

- ≤10mph
- 11mph - 20mph
- 21mph - 30mph
- 31mph - 40mph
- 41mph - 50mph

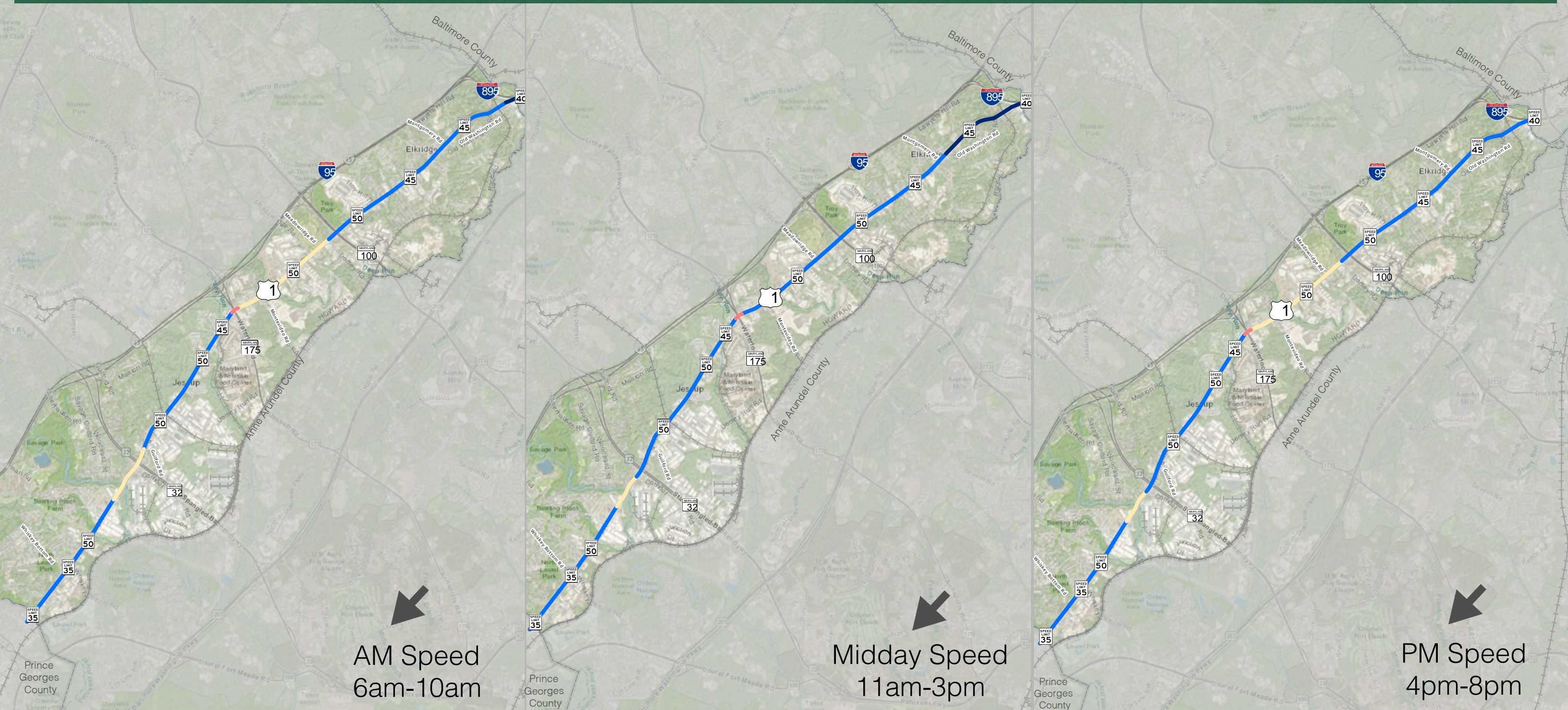
Data Source: Average Speed data compiled from INRIX database October, 2016.





# US 1 Safety Evaluation on Bicyclist and Pedestrian Safety

## Average Travel Speed - Southbound



AM Speed  
6am-10am

Midday Speed  
11am-3pm

PM Speed  
4pm-8pm

LEGEND

- ≤10mph
- 11mph - 20mph
- 21mph - 30mph
- 31mph - 40mph
- 41mph - 50mph

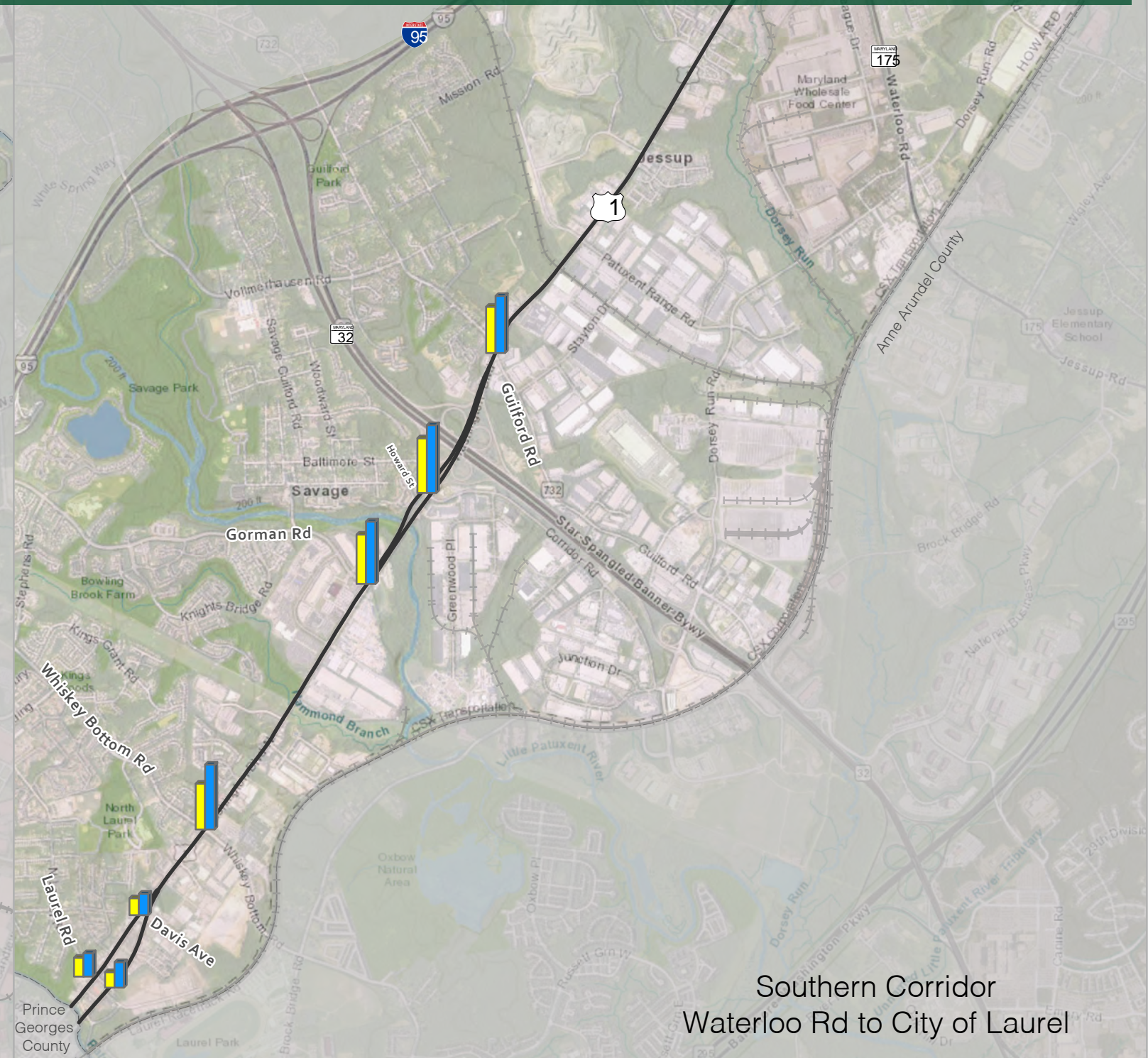
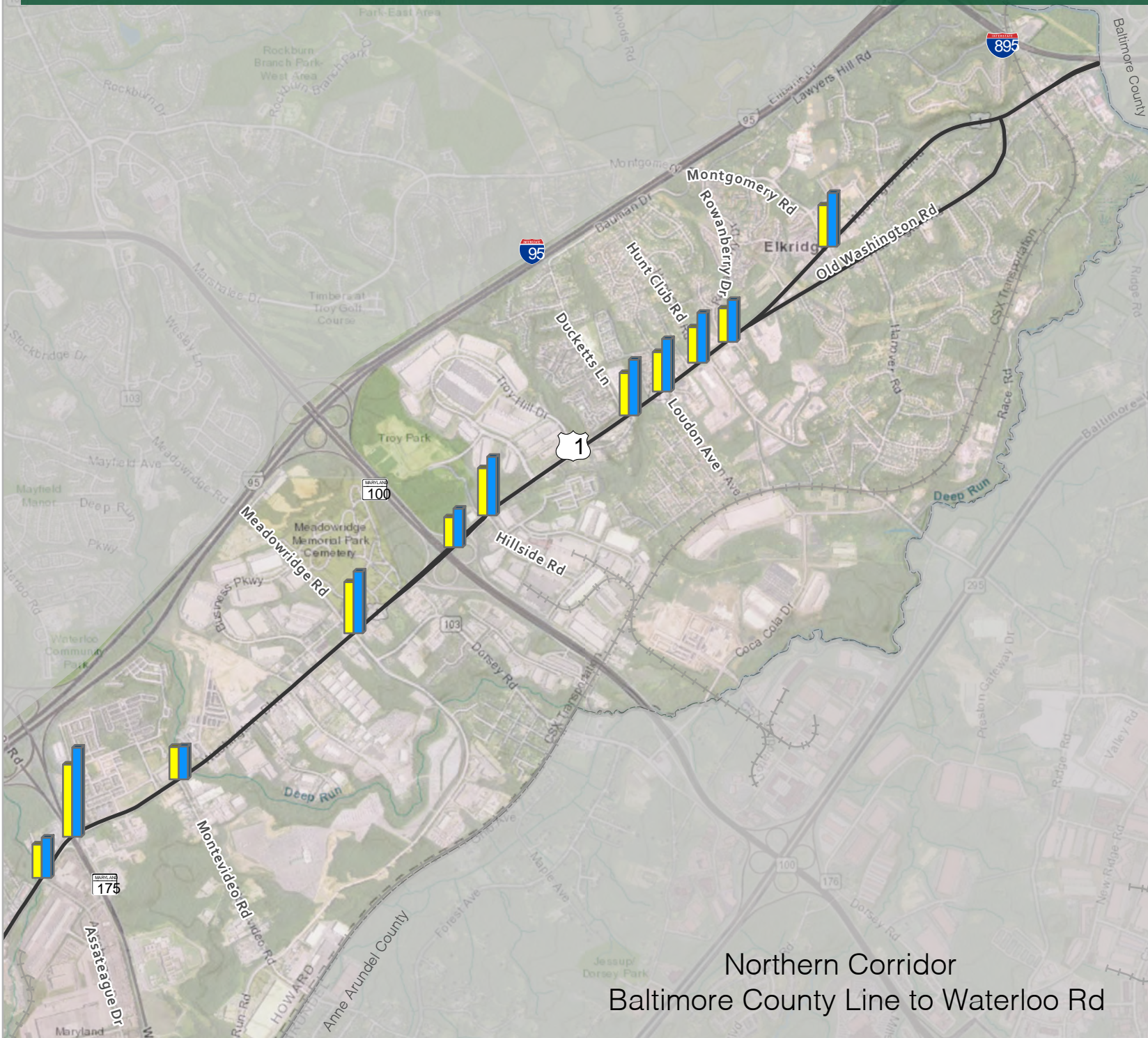
Data Source: Average Speed data compiled from INRIX database October, 2016.





# US 1 Safety Evaluation on Bicyclist and Pedestrian Safety

## Total Entering Intersection Vehicle Volume



**LEGEND**

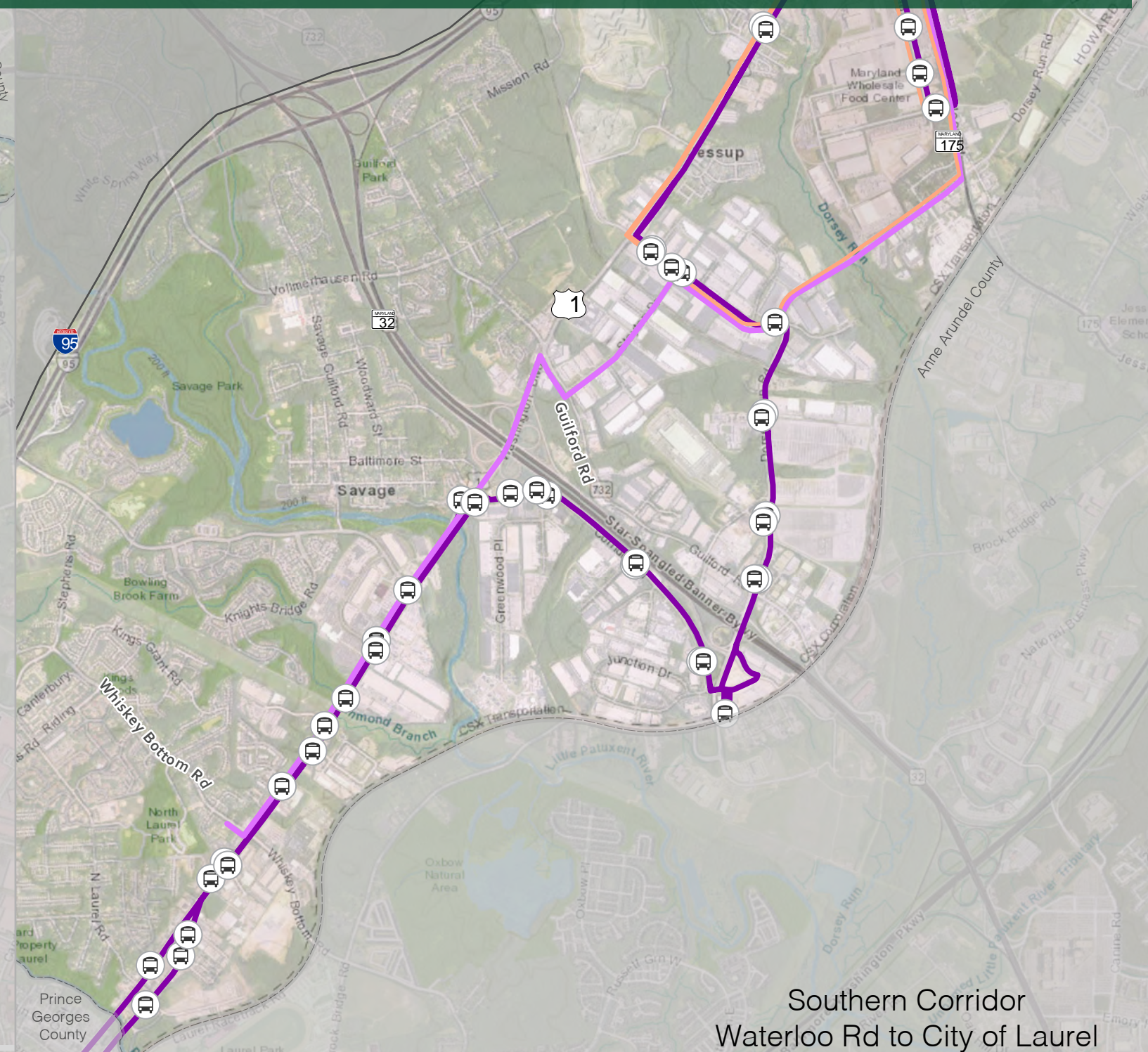
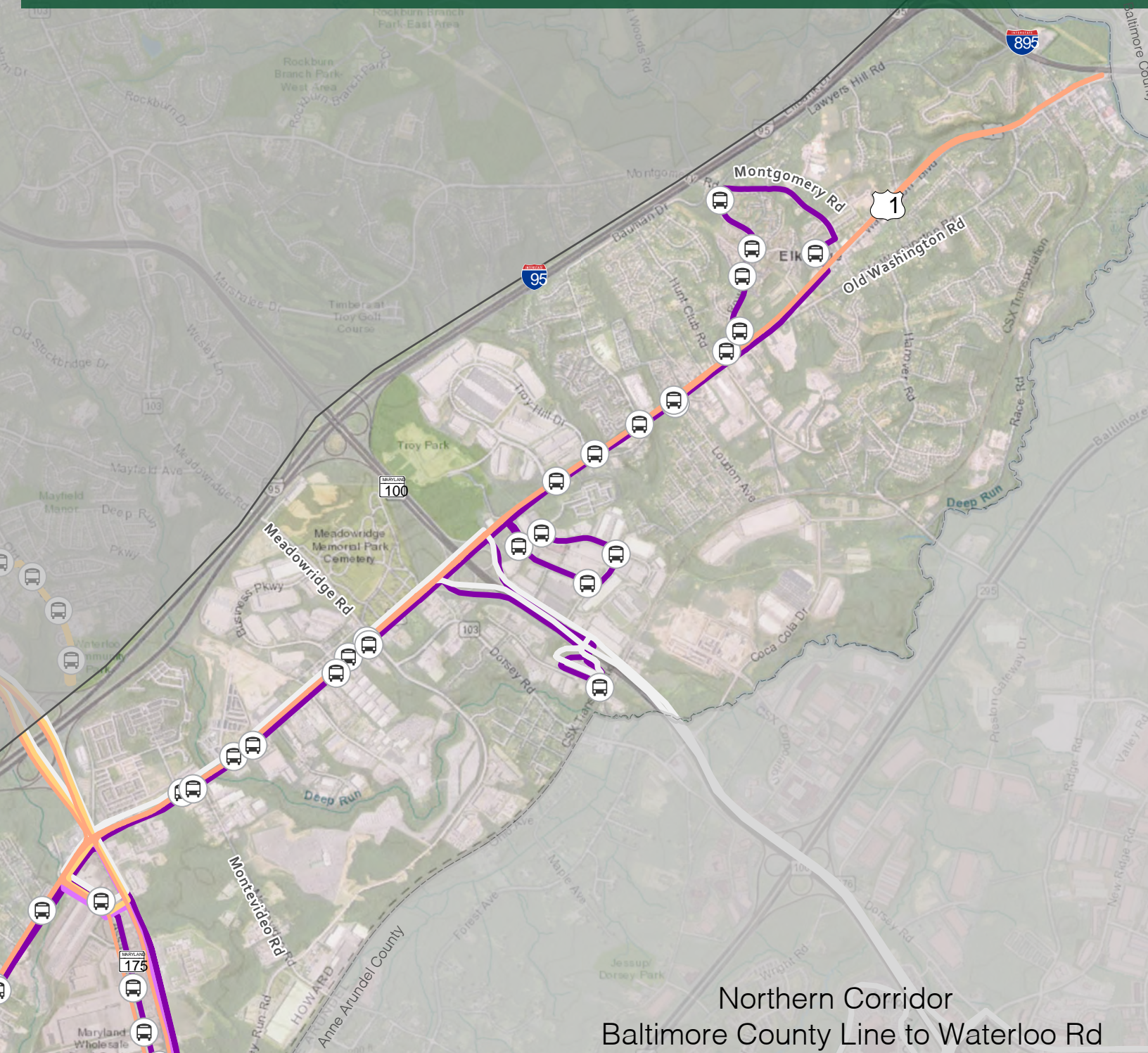
AM Peak Intersection Volume	PM Peak Intersection Volume	1,000 Vehicles	2,000 Vehicles	3,000 Vehicles	4,000 Vehicles	5,000 Vehicles

Data Source: SHA ITMS 2010-2016.



# US 1 Safety Evaluation on Bicyclist and Pedestrian Safety

## Bus Routes & Ridership



LEGEND

### RTA Bus Route Average Daily Riders

- Silver Line/ 501  
15,145 Riders
- Gold Line/ 408  
2,318 Riders
- Purple Line/ 409  
4,072 Riders
- B-Line/ 409
- MTA Commuter  
Bus Route 300



Data Source: Howard County data showing average ridership 2017.





# US 1 Safety Evaluation on Bicyclist and Pedestrian Safety

## Pedestrian Infrastructure - Focus Area 1



imagery updated 2017

City of Laurel  
to Whiskey Bottom Rd

### LEGEND

— Sidewalk

• Ramp

— Crosswalk

Pedestrian Refuge

Pedestrian Signal  
All pedestrian signals in this area have pedestrian activated push buttons

Data Source:  
Howard County  
Common Places 2017.





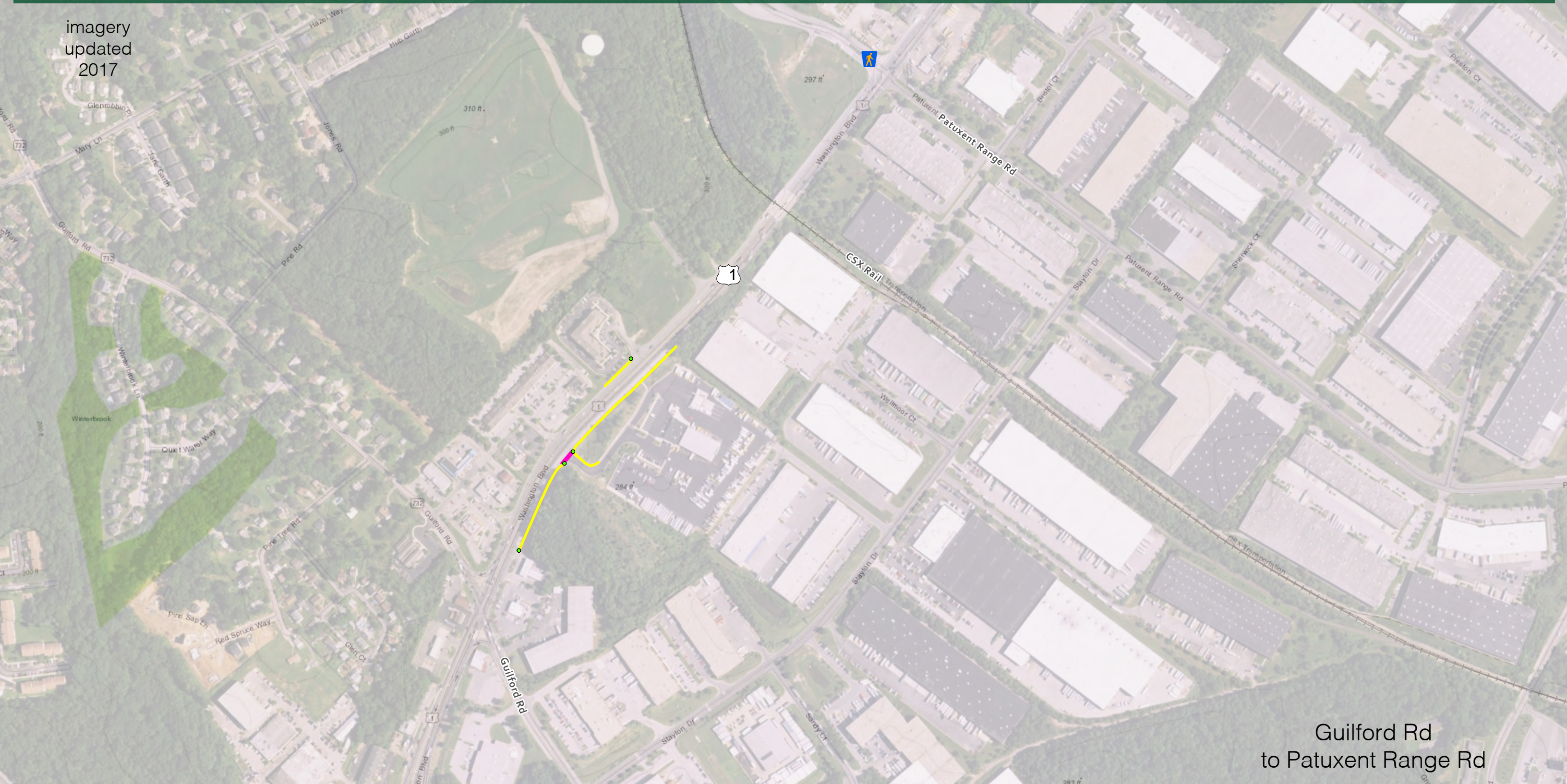


# US 1 Safety Evaluation on Bicyclist and Pedestrian Safety

## Pedestrian Infrastructure - Focus Area 2



imagery updated 2017



Guilford Rd  
to Patuxent Range Rd

### LEGEND

— Sidewalk

• Ramp

— Crosswalk

Pedestrian Refuge

Pedestrian Signal  
All pedestrian signals in this area have pedestrian activated push buttons

Data Source:  
Howard County  
Common Places 2017.

N



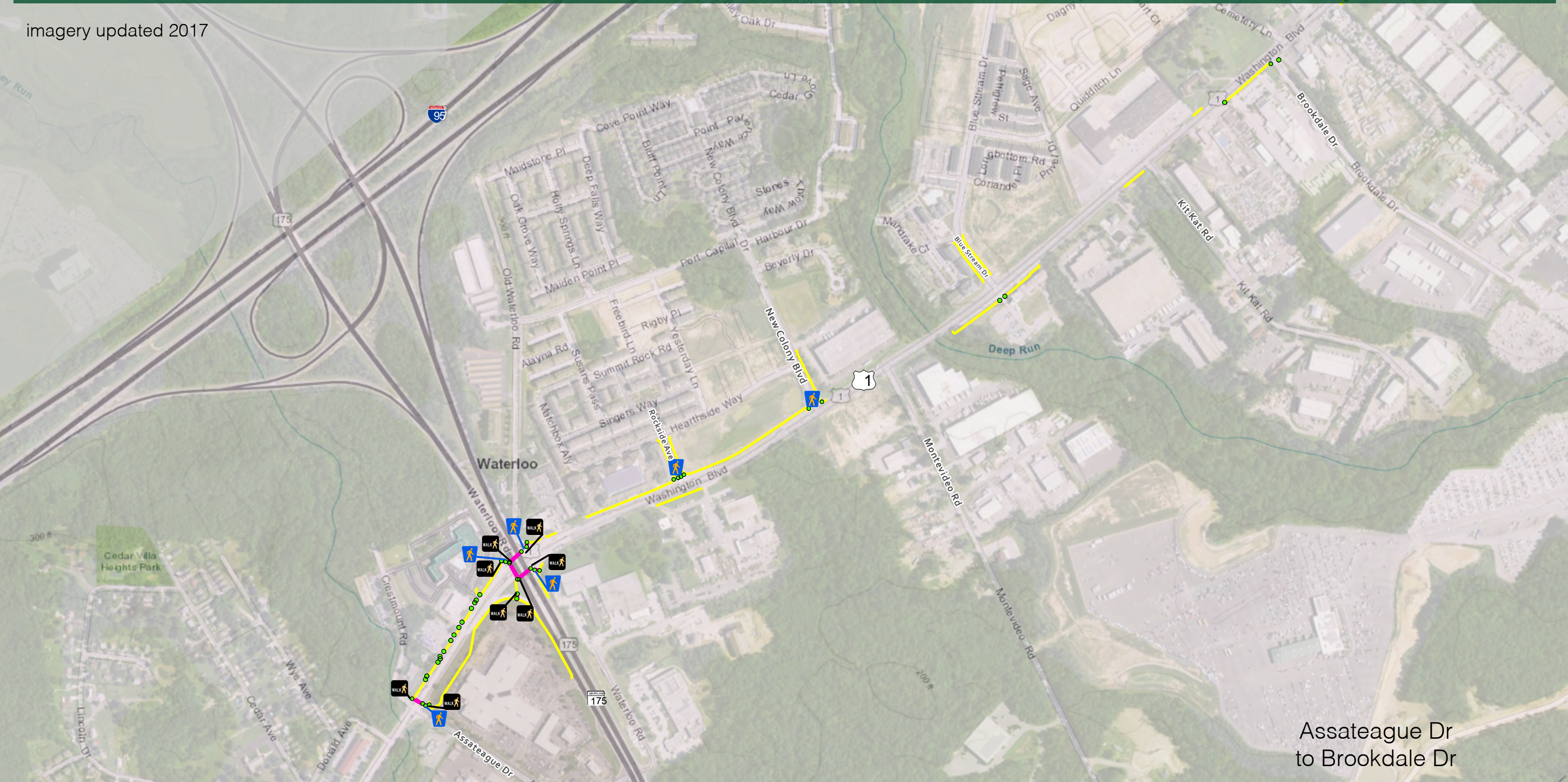


# US 1 Safety Evaluation on Bicyclist and Pedestrian Safety

## Pedestrian Infrastructure - Focus Area 3



imagery updated 2017



Assateague Dr  
to Brookdale Dr

### LEGEND

— Sidewalk

• Ramp

— Crosswalk

🚶 Pedestrian Refuge

🚶 Pedestrian Signal  
All pedestrian signals in this area have pedestrian activated push buttons

Data Source:  
Howard County  
Common Places 2017.





# US 1 Safety Evaluation on Bicyclist and Pedestrian Safety

## Pedestrian Infrastructure - Focus Area 4



imagery updated 2017



Greenfield Rd to Levering Ave

Anne Arundel County

### LEGEND

— Sidewalk

• Ramp

— Crosswalk

🚶 Pedestrian Refuge

🚶 Pedestrian Signal

All pedestrian signals in this area have pedestrian activated push buttons

Data Source:  
Howard County  
Common Places 2017.

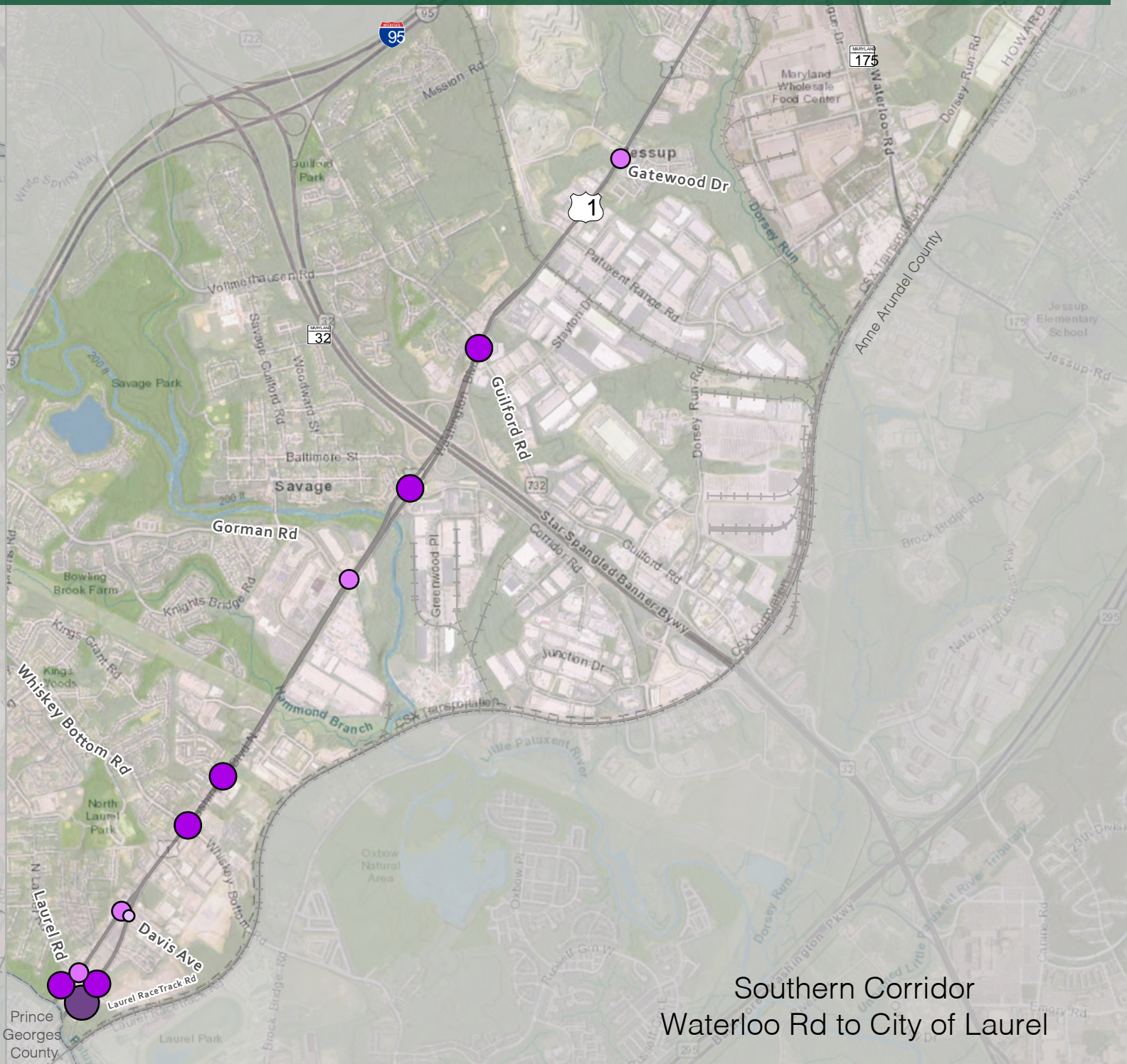
N





# US 1 Safety Evaluation on Bicyclist and Pedestrian Safety

## Daily Intersection Pedestrian Volume



### LEGEND

- < 5 people
- 6 people - 20 people
- 21 people - 35 people
- 36 people - 50 people
- > 50 people

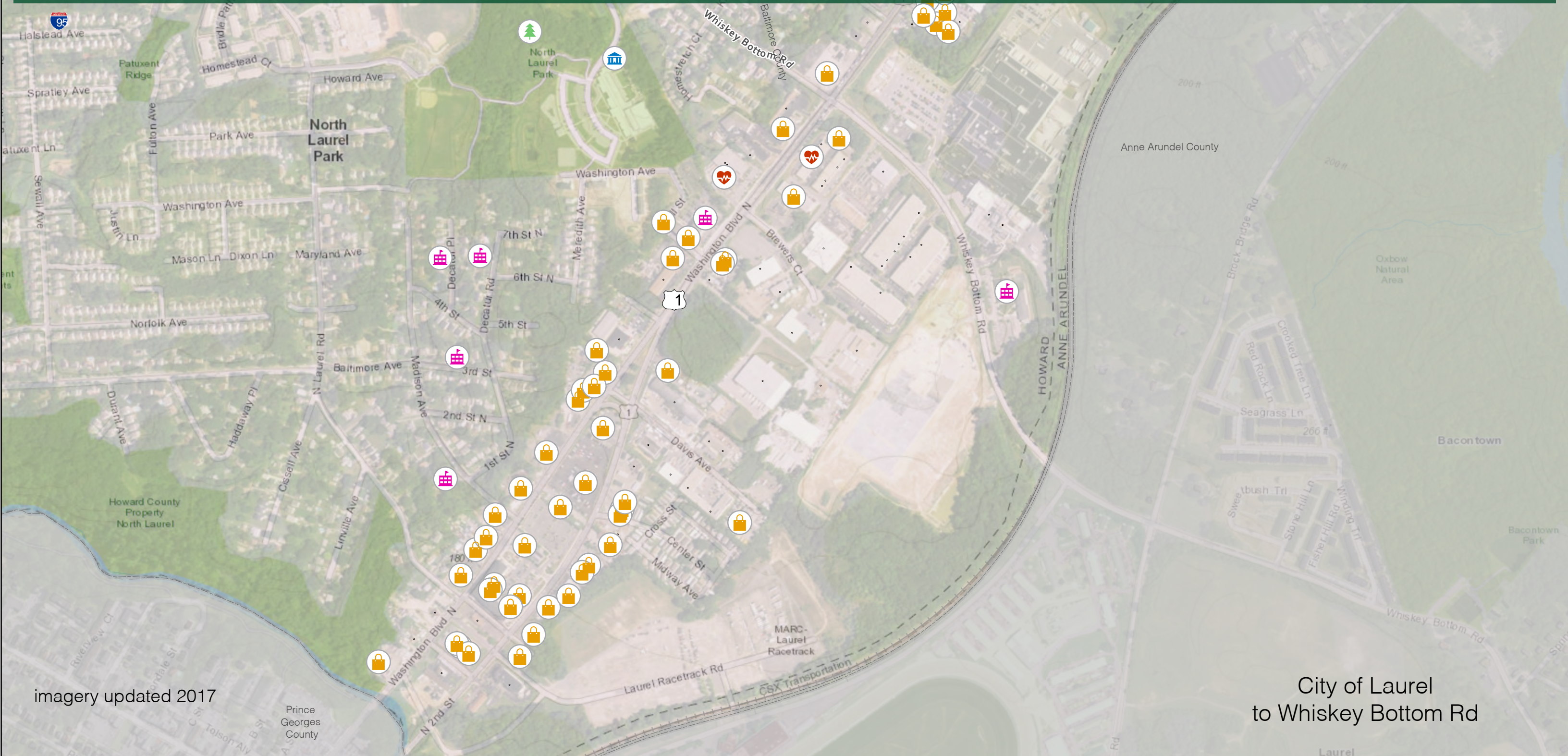
Data Source:  
SHA ITMS 2010-2016.





# US 1 Safety Evaluation on Bicyclist and Pedestrian Safety

## Pedestrian Generators - Laurel



imagery updated 2017

City of Laurel  
to Whiskey Bottom Rd

LEGEND

-  Retail
-  Schools
-  Parks/Pods
-  Correctional Facilities
-  Community & Worship Centers
-  Convenient Stores/Gas Stations
-  Hospital/Medical
-  Senior Centers

Data Source:  
Howard County  
Common Places 2017.



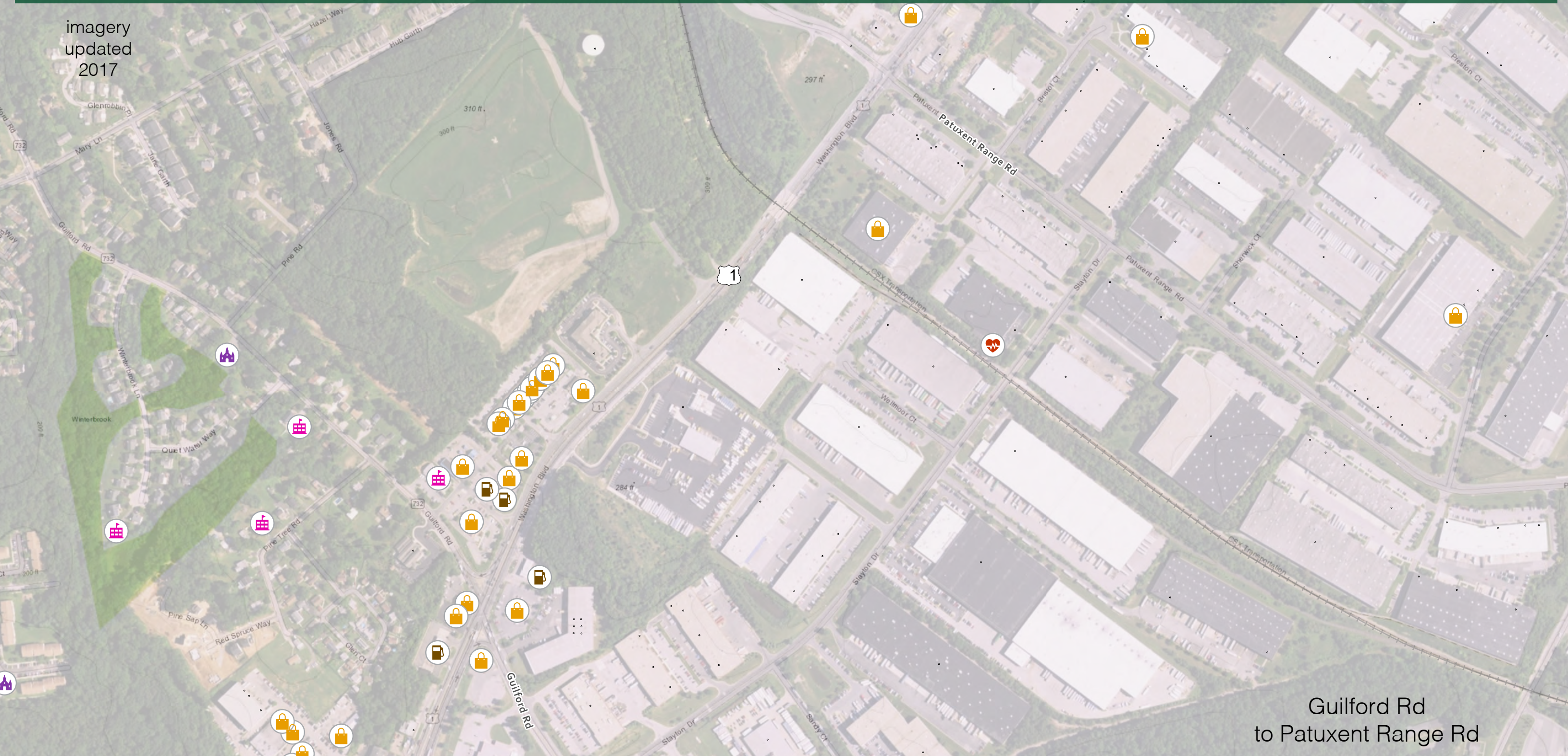


# US 1 Safety Evaluation on Bicyclist and Pedestrian Safety

## Pedestrian Generators 2



imagery updated 2017



Guilford Rd  
to Patuxent Range Rd

LEGEND

- Retail
- Schools
- Parks/Pods
- Correctional Facilities
- Community & Worship Centers
- Convenient Stores/Gas Stations
- Hospital/Medical
- Senior Centers

Data Source:  
Howard County  
Common Places 2017.



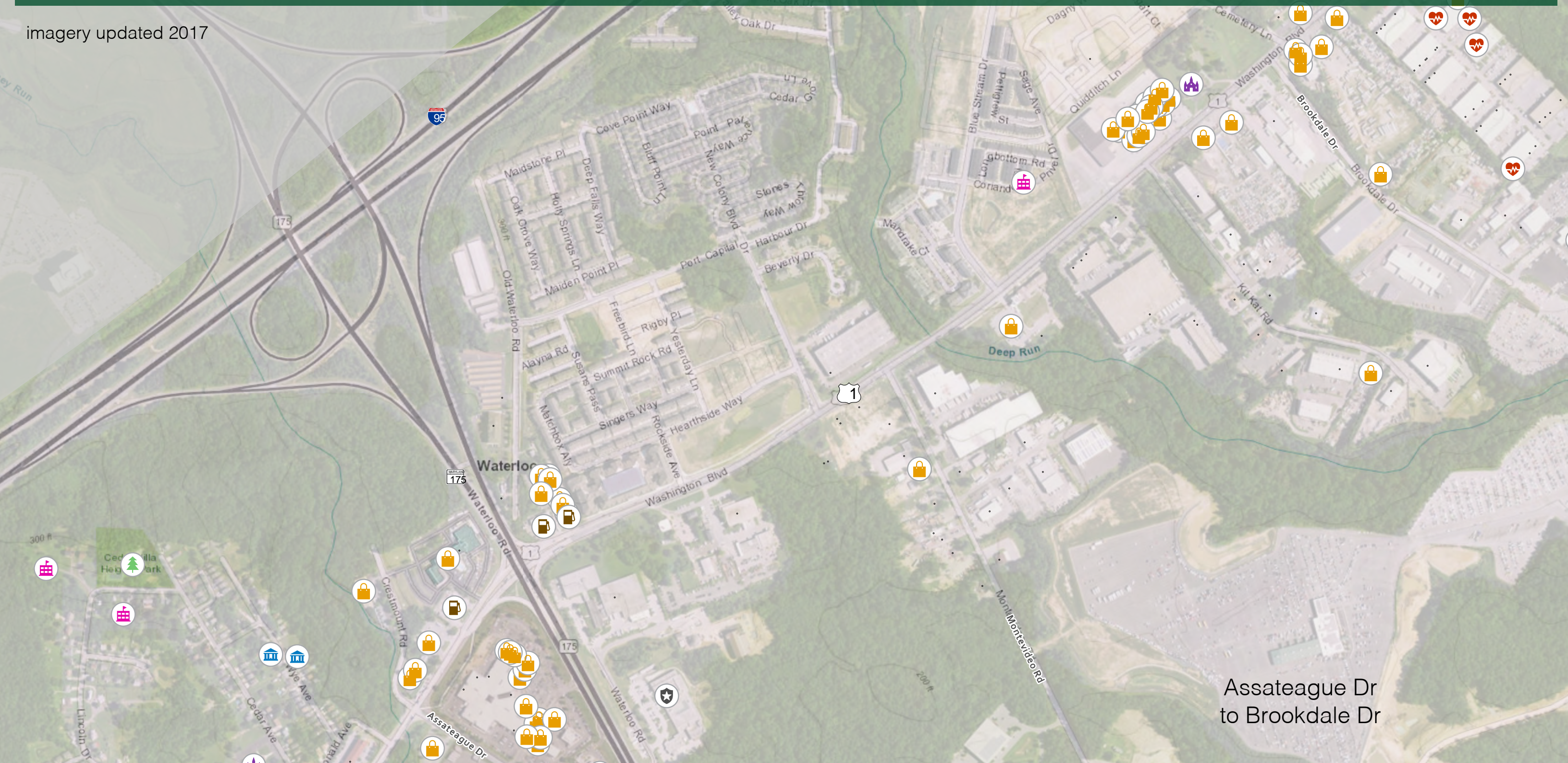


# US 1 Safety Evaluation on Bicyclist and Pedestrian Safety

## Pedestrian Generators 3



imagery updated 2017



Assateague Dr  
to Brookdale Dr

LEGEND

-  Retail
-  Schools
-  Parks/Pods
-  Correctional Facilities
-  Community & Worship Centers
-  Convenient Stores/Gas Stations
-  Hospital/Medical
-  Senior Centers

Data Source:  
Howard County  
Common Places 2017.



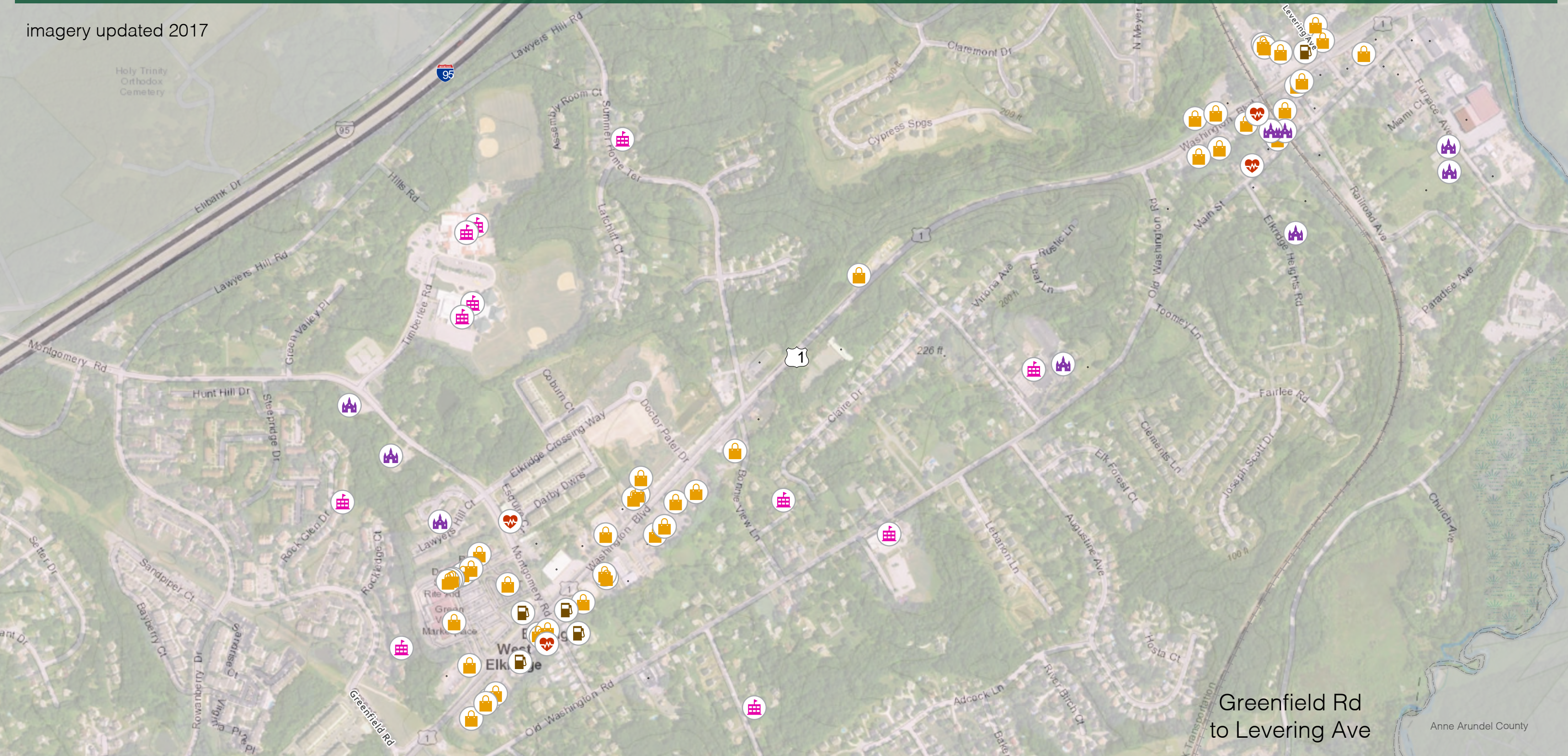


# US 1 Safety Evaluation on Bicyclist and Pedestrian Safety

## Pedestrian Generators 4



imagery updated 2017



Greenfield Rd to Levering Ave

Anne Arundel County

LEGEND

- Retail
- Schools
- Parks/Pods
- Correctional Facilities
- Community & Worship Centers
- Convenient Stores/Gas Stations
- Hospital/Medical
- Senior Centers

Data Source:  
Howard County  
Common Places 2017.



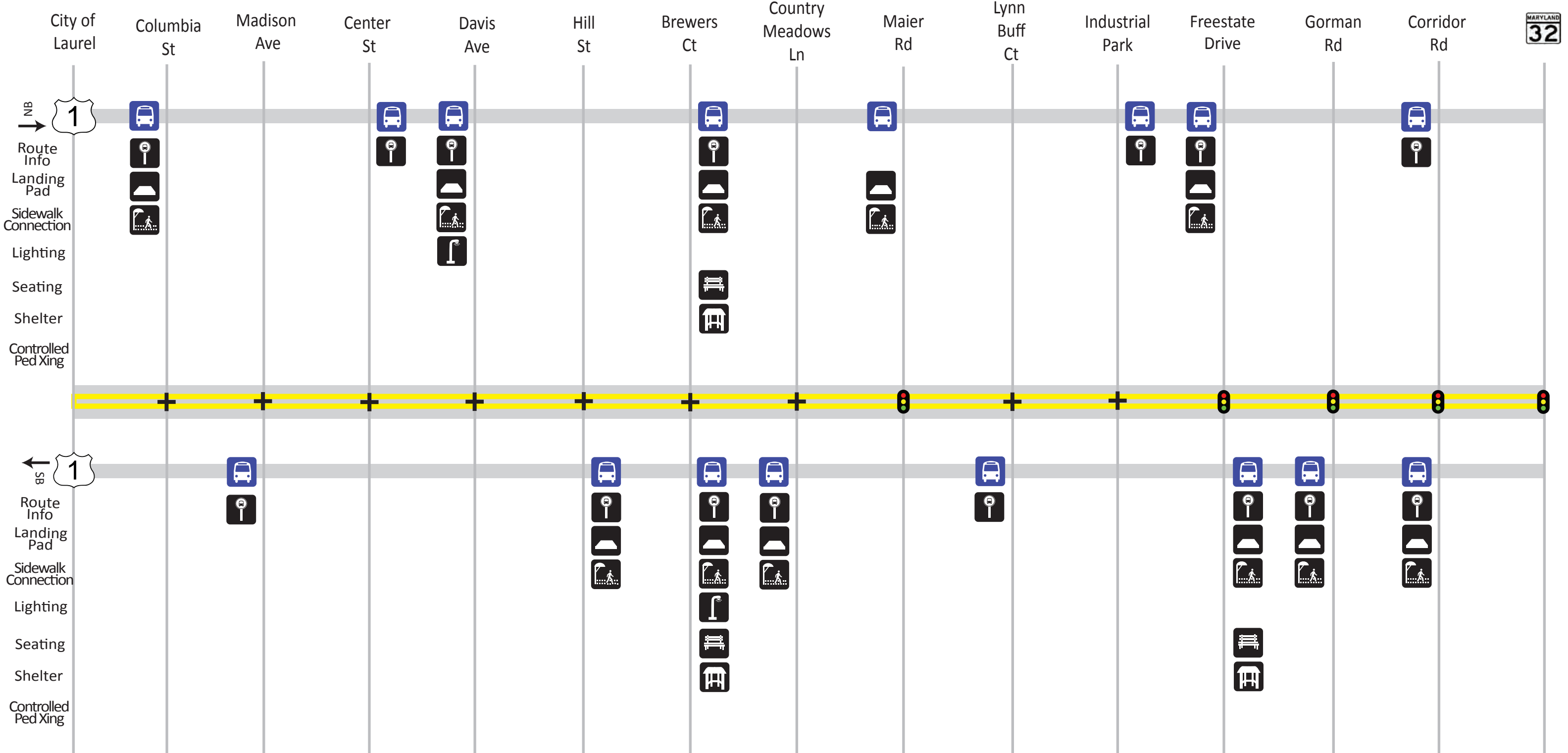




# US 1 Safety Evaluation on Bicyclist and Pedestrian Safety

## Bus Stop Ammenities along US 1 from City of Laurel to MD 32

North →



### LEGEND

Google Earth 2017

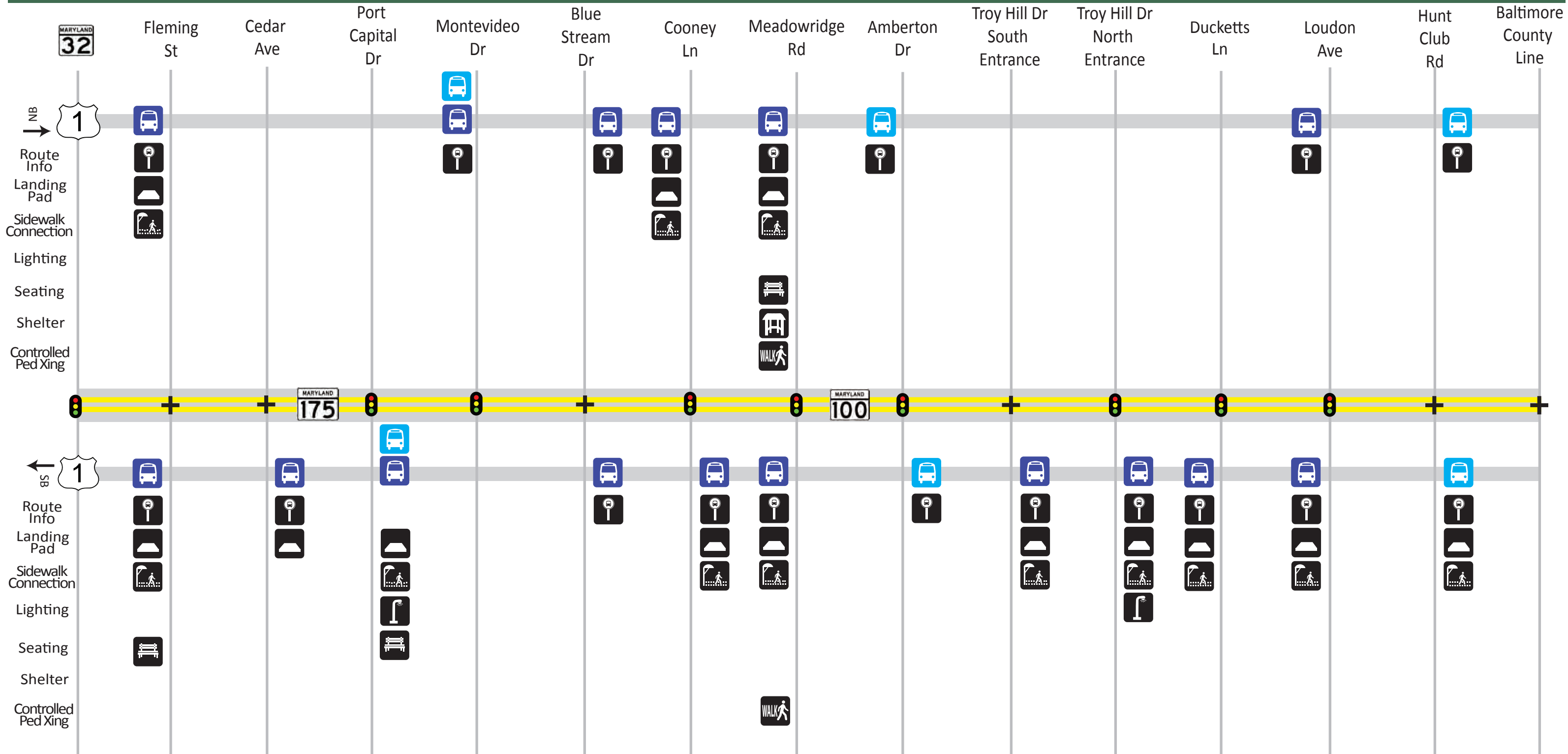
- RTA Bus Stop
- Route Information
- Landing Pad
- Sidewalk Connection
- Seating
- Shelter
- Lighting
- Controlled Pedestrian Crossing
- Intersection
- Signalized Intersection



# US 1 Safety Evaluation on Bicyclist and Pedestrian Safety

## Bus Stop Amenities along US 1 from MD 32 to Baltimore County Line

North →



### LEGEND

Google Earth 2017

- RTA Bus Stop
- MTA Bus Stop
- Route Information
- Landing Pad
- Sidewalk Connection
- Seating
- Shelter
- Lighting
- Controlled Pedestrian Crossing
- Intersection
- Signalized Intersection