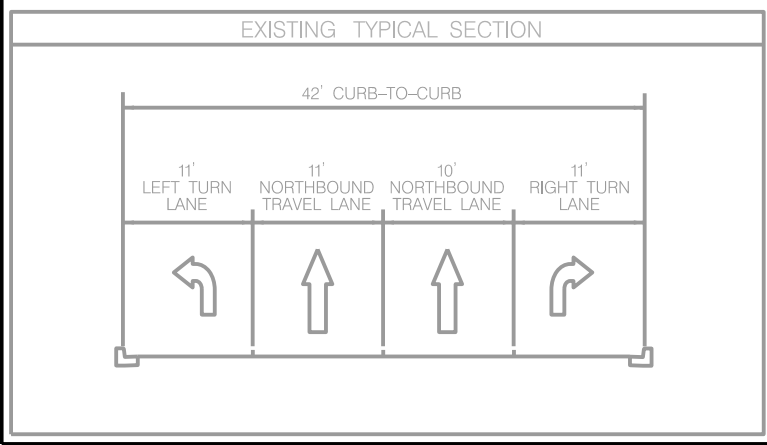
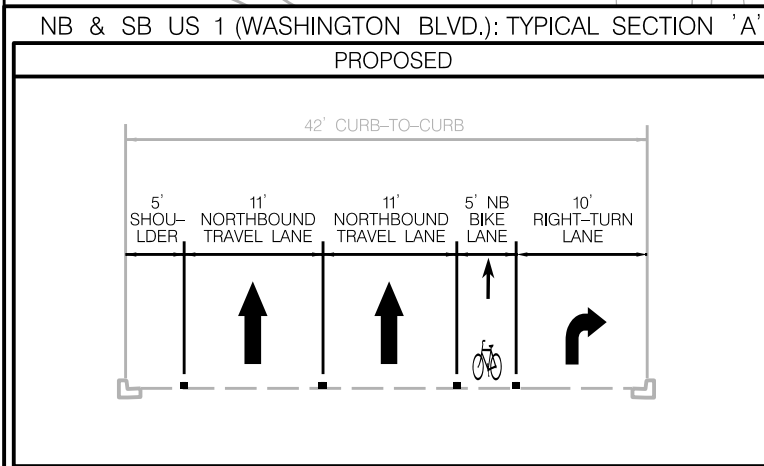
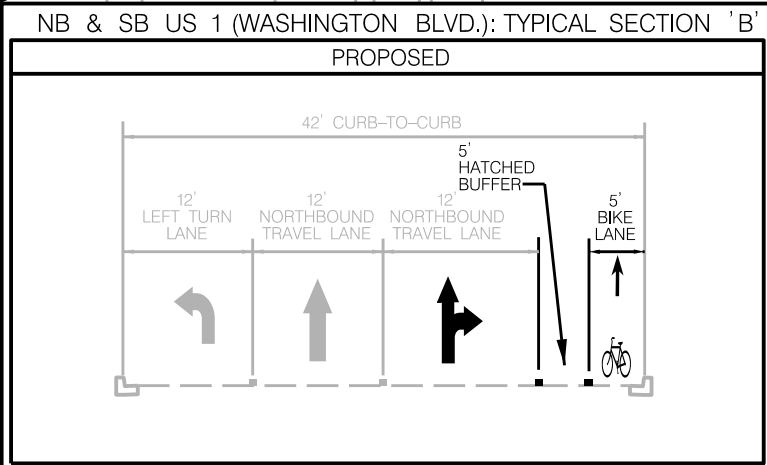
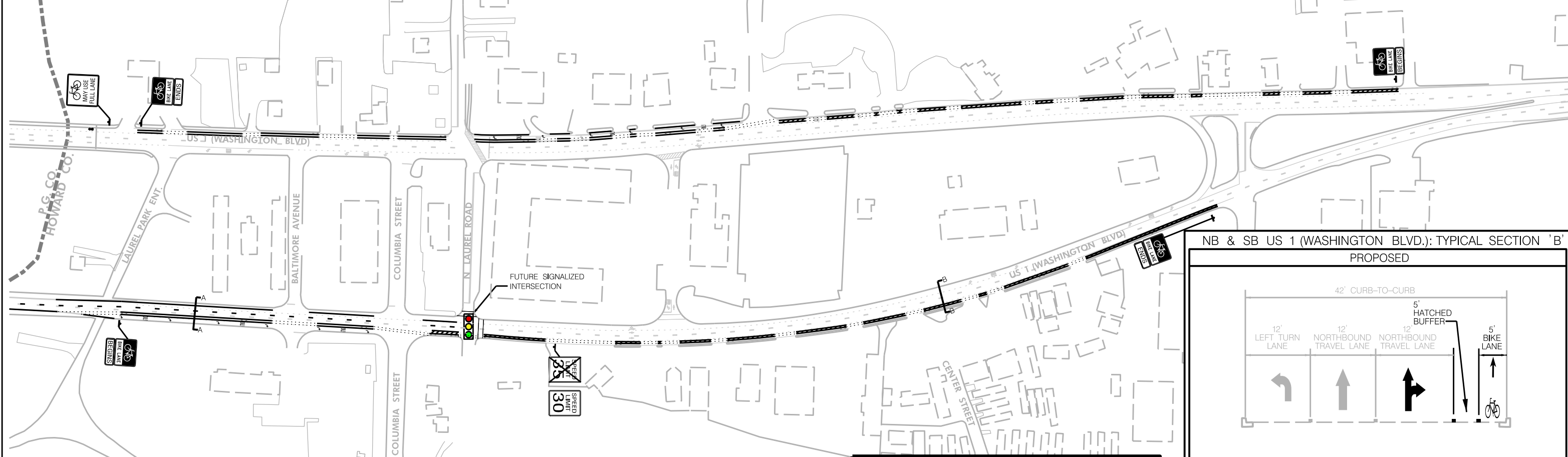
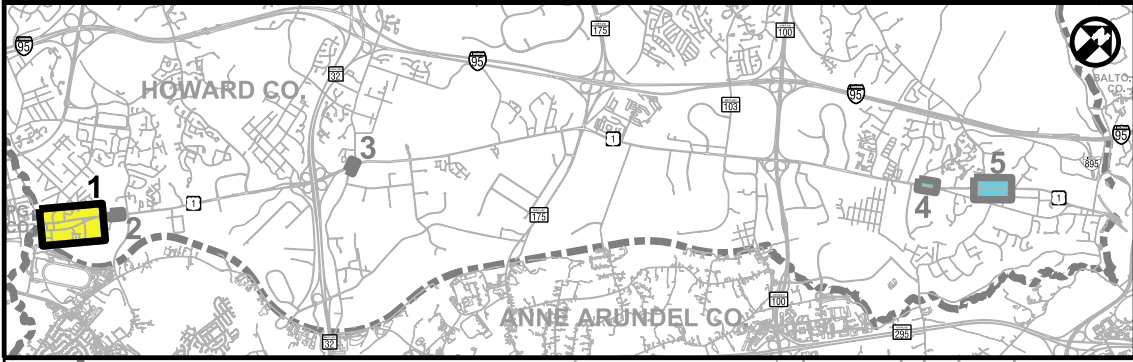


# **APPENDIX I**

## **Concept Drawings**

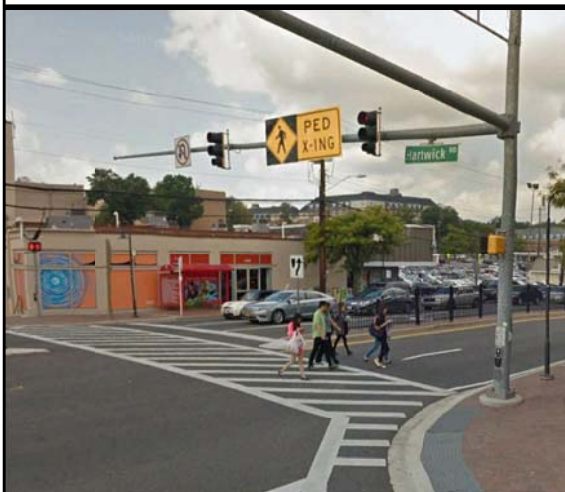
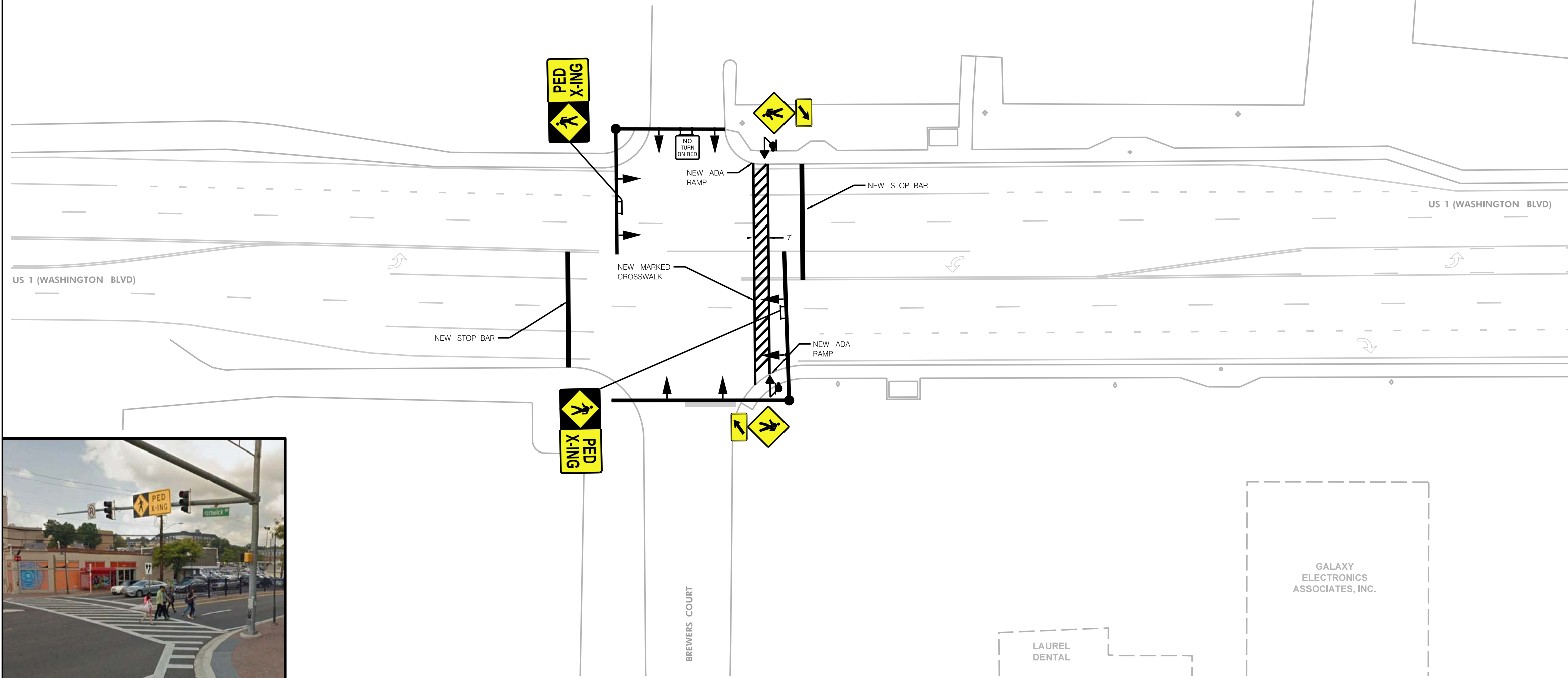
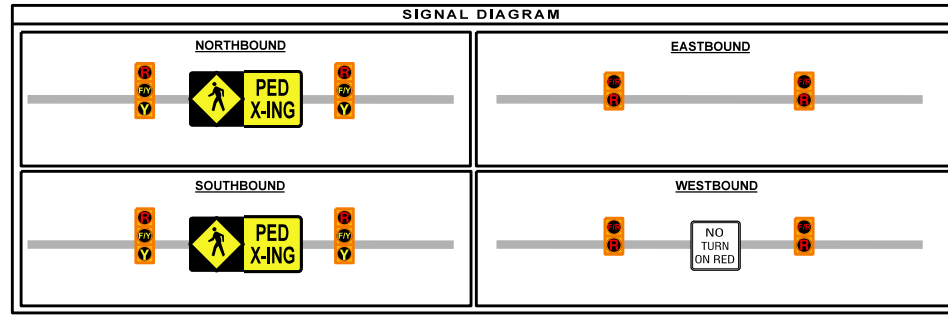
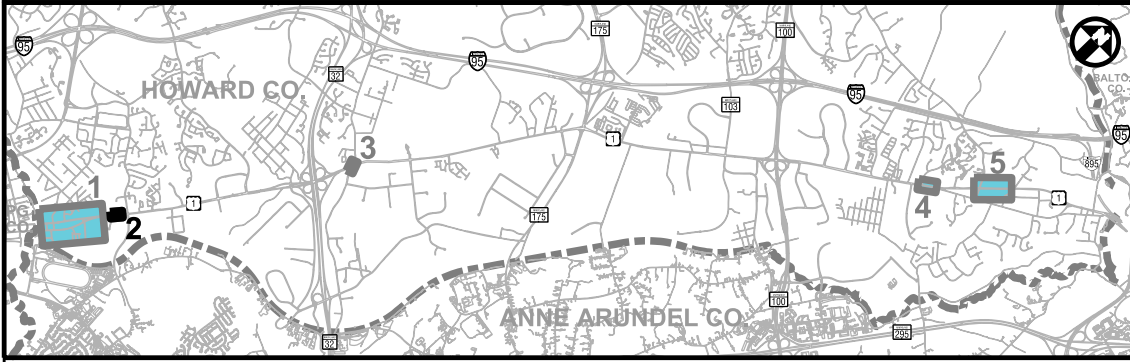
# KEY MAP



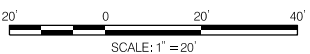
US 1 (Washington Boulevard) Safety Evaluation  
Proposed Improvements: Concept # 1  
Lane Repurposing for Bike Facility

OPERATOR: USERNAME; PLOTTED: DATE; FILE NAME: FILE

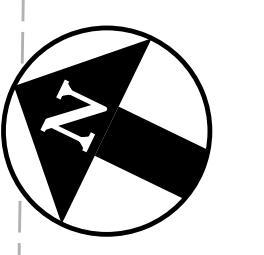
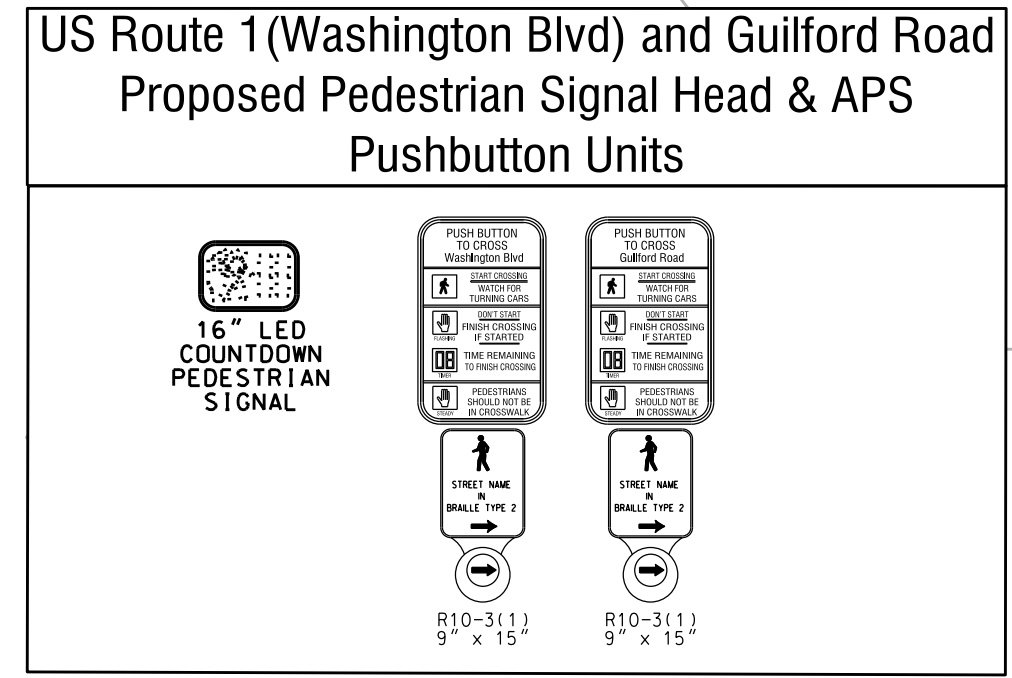
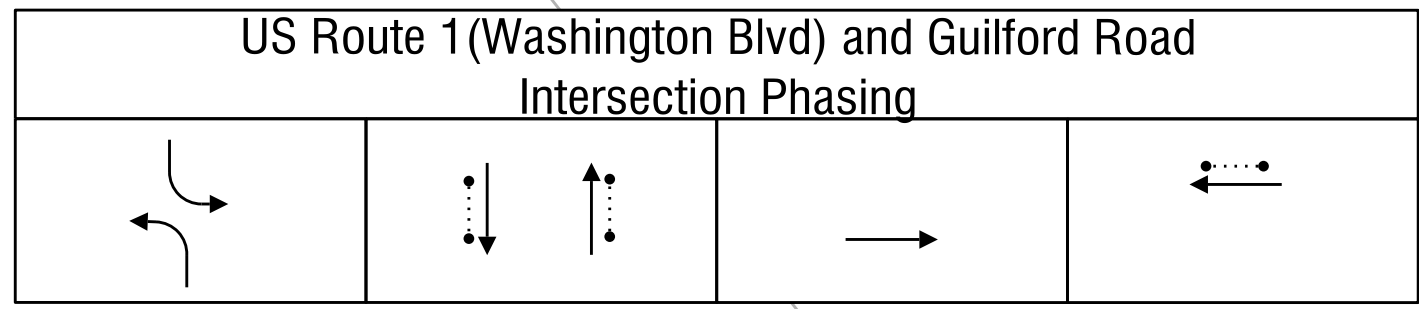
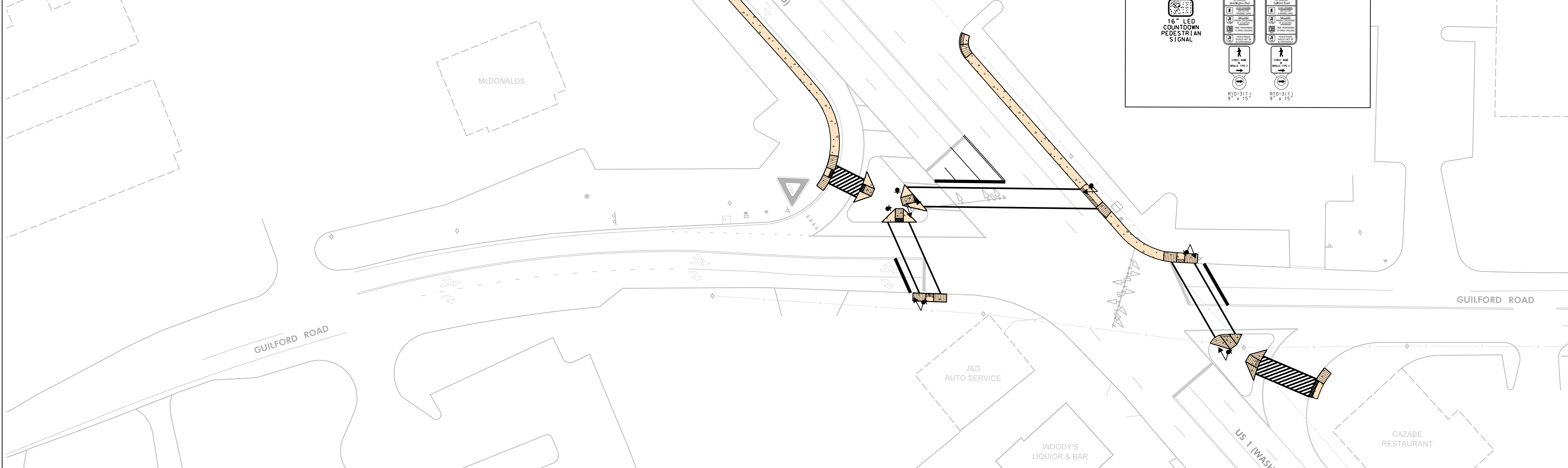
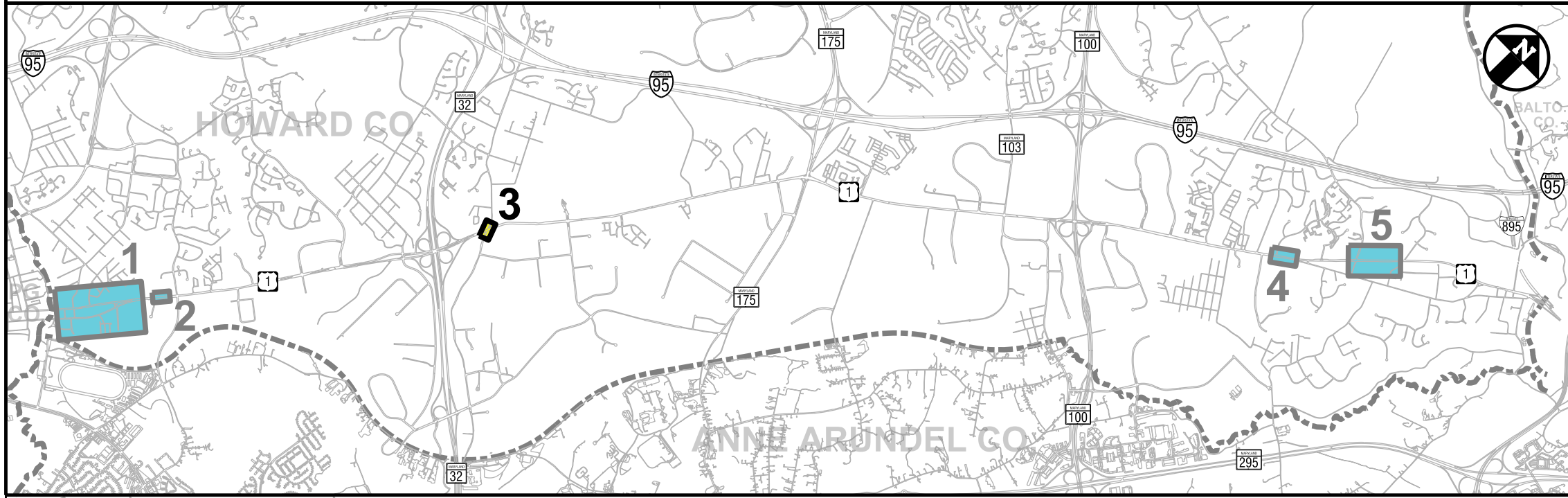
# KEY MAP



US 1 (Washington Boulevard) Safety Evaluation  
 Proposed Improvements: Concept # 2  
 Pedestrian Activated Traffic Signal



# KEY MAP

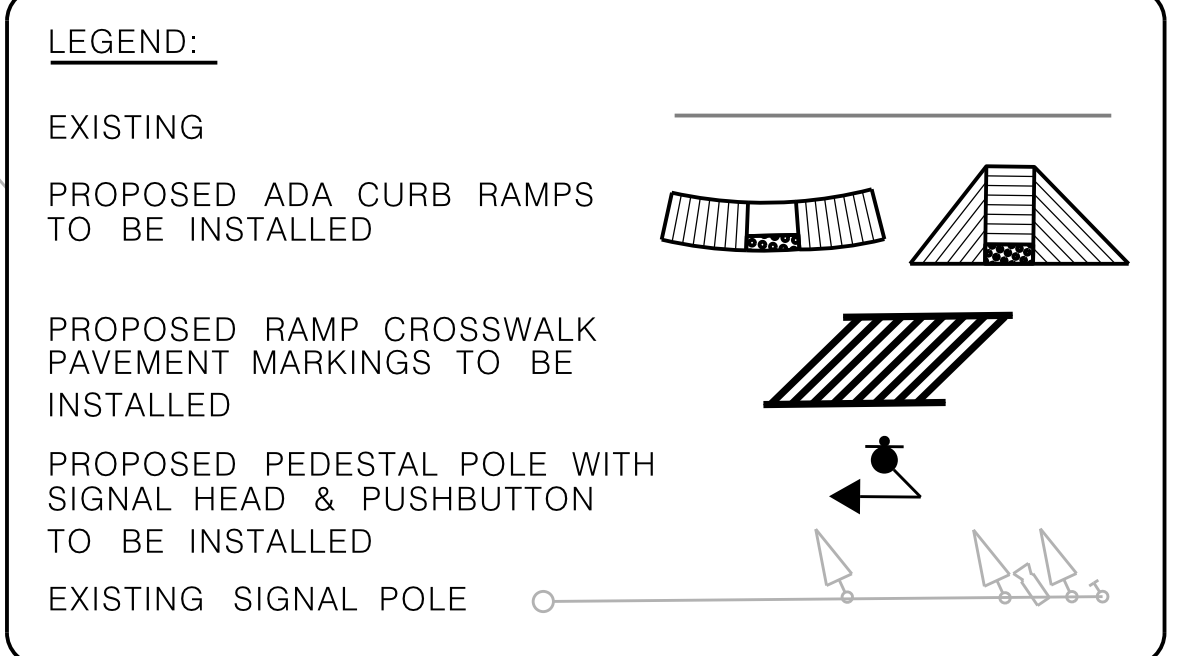
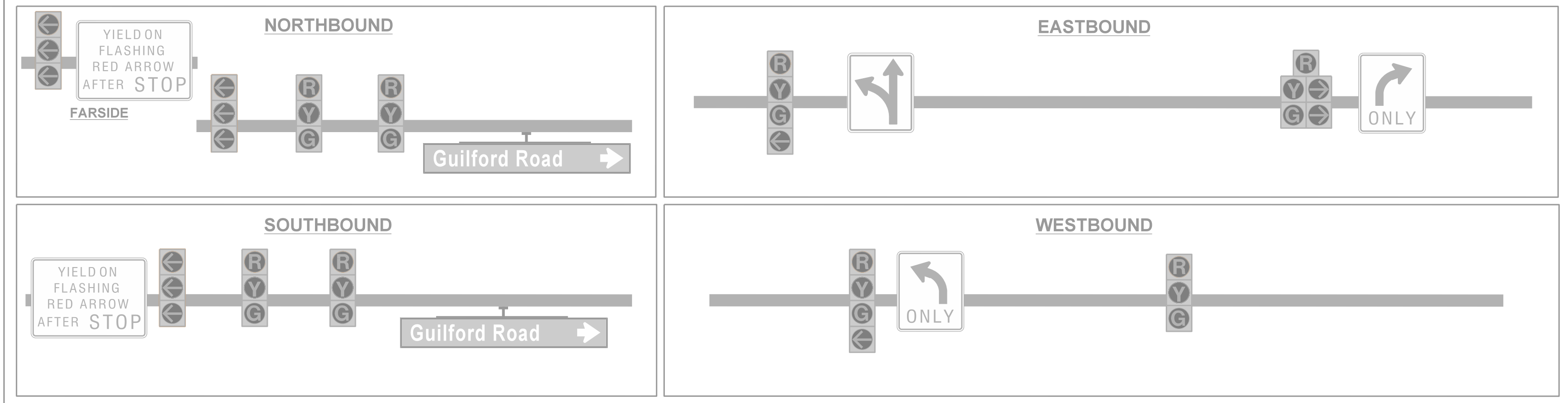


GUILFORD ROAD BUSINESS CENTER

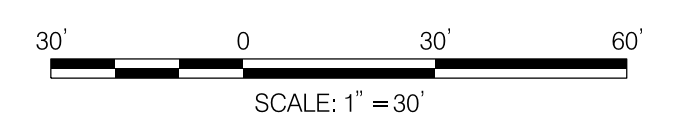
GUILFORD ROAD

US 1 (WASHINGTON BLVD)

**SIGNAL DIAGRAM: GUILFORD ROAD [EB/WB] AT US 1 (WASHINGTON BLVD) [NB/SB]**

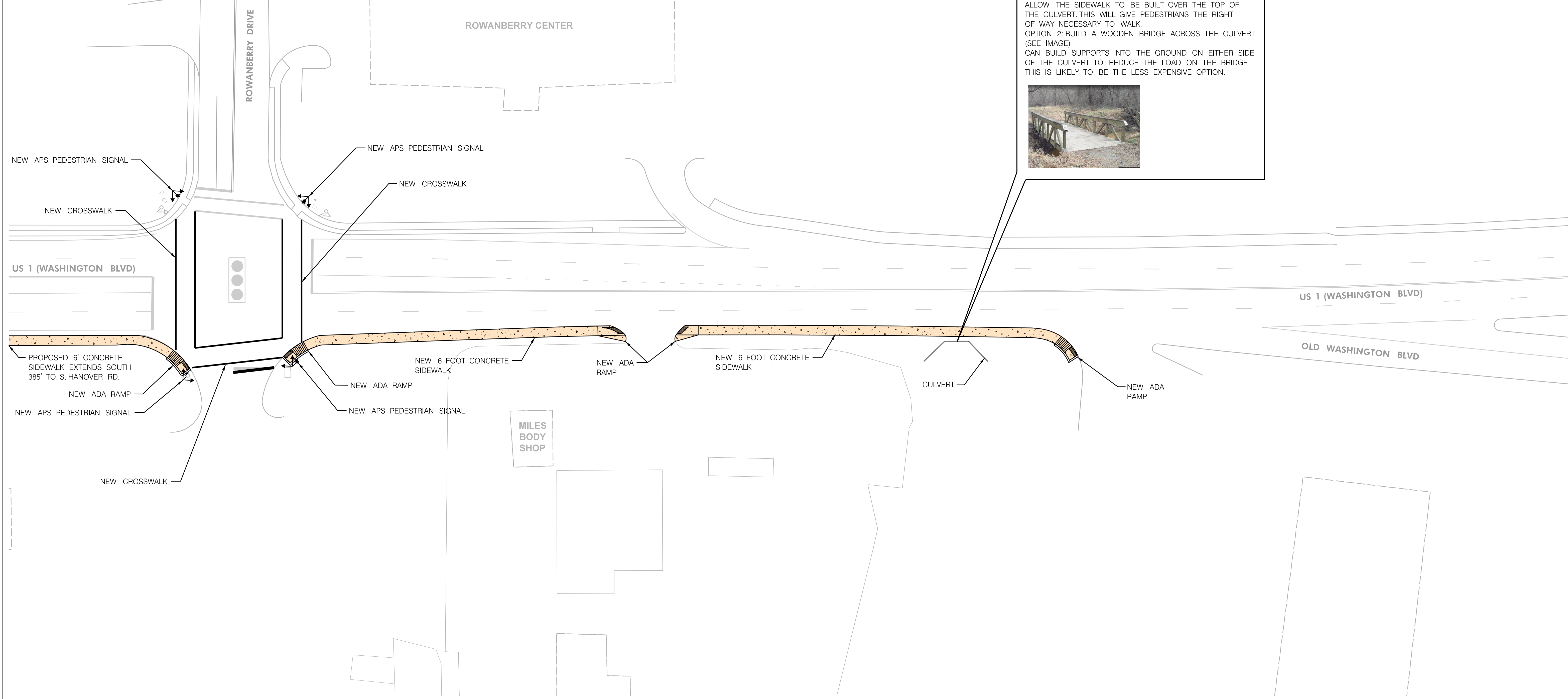
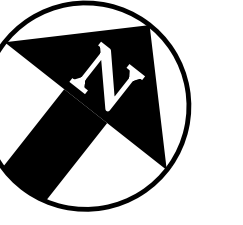
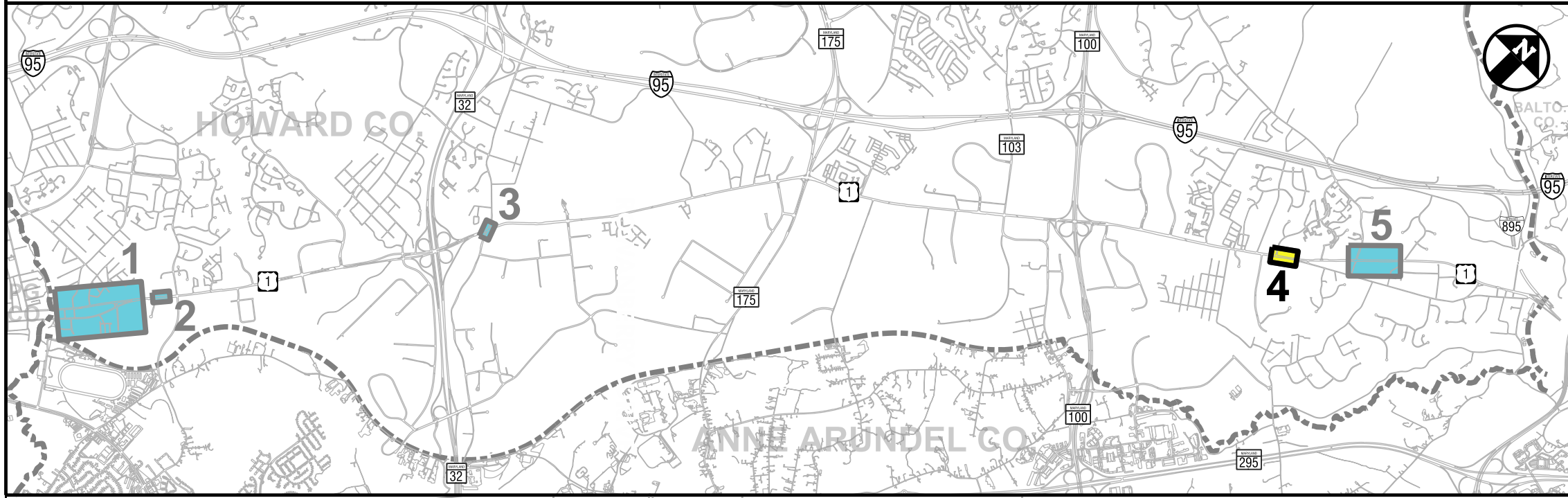


*US 1 (Washington Boulevard) Safety Evaluation  
Proposed Improvements: Concept # 3  
Pedestrian Improvements at Guilford Road*



OPERATOR\$USERNAME\$PLOT\$DATE\$ FILE NAME\$FILE\$

# KEY MAP

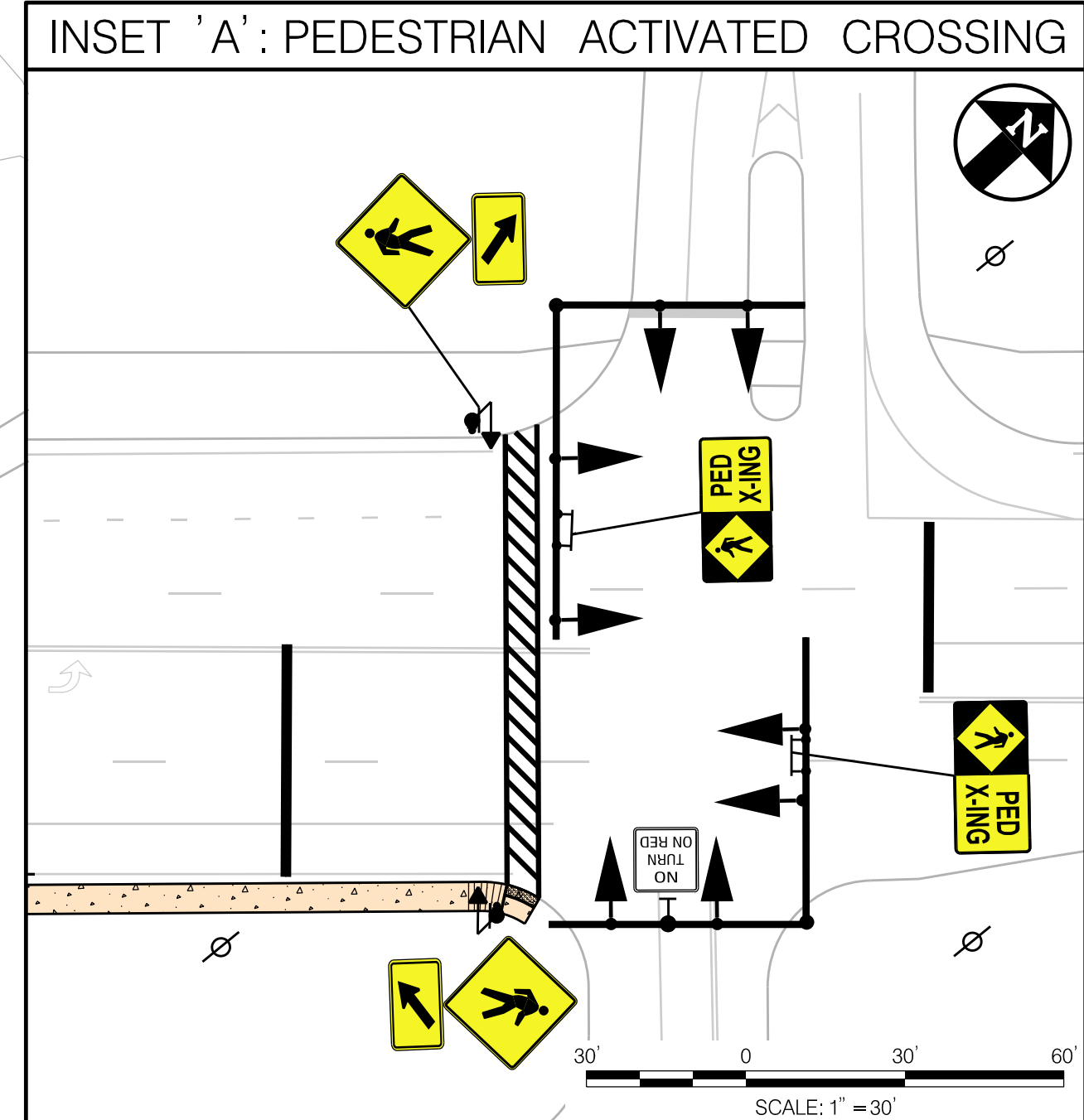
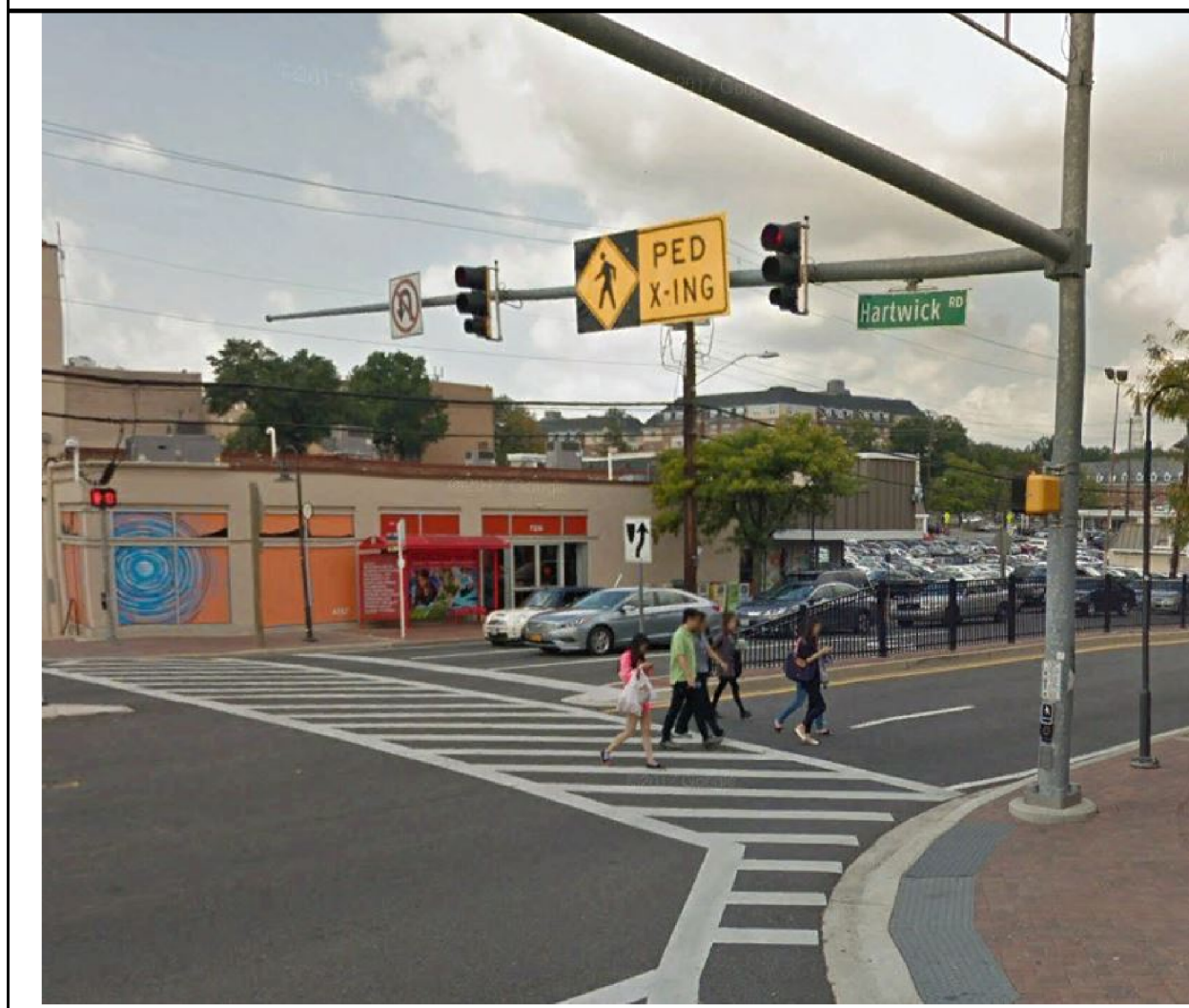
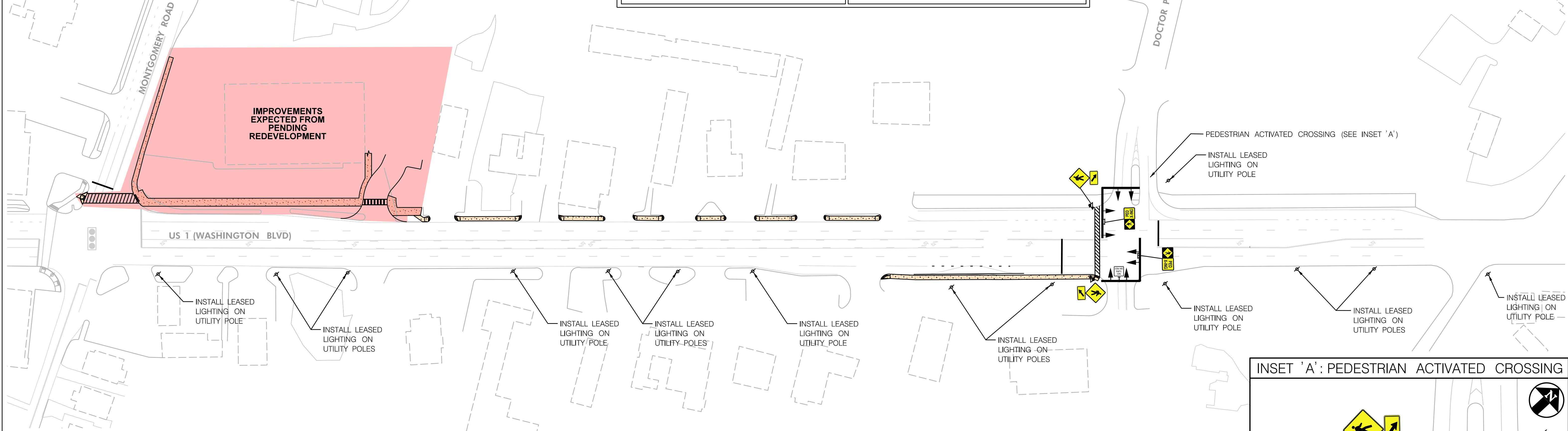
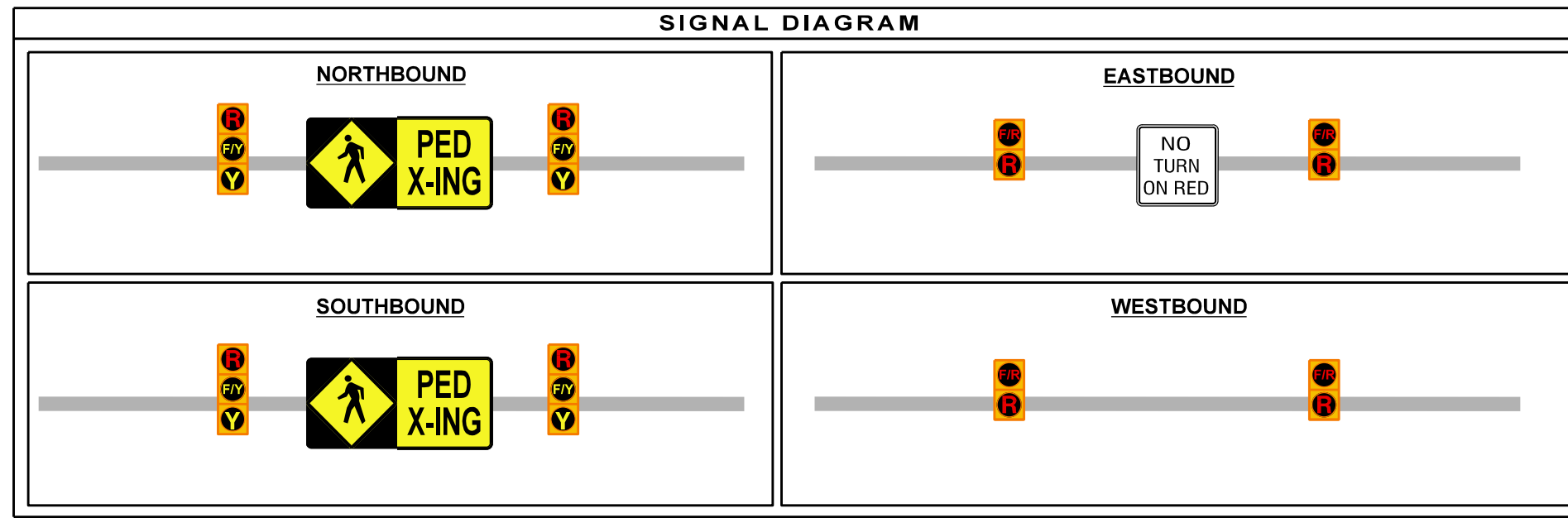
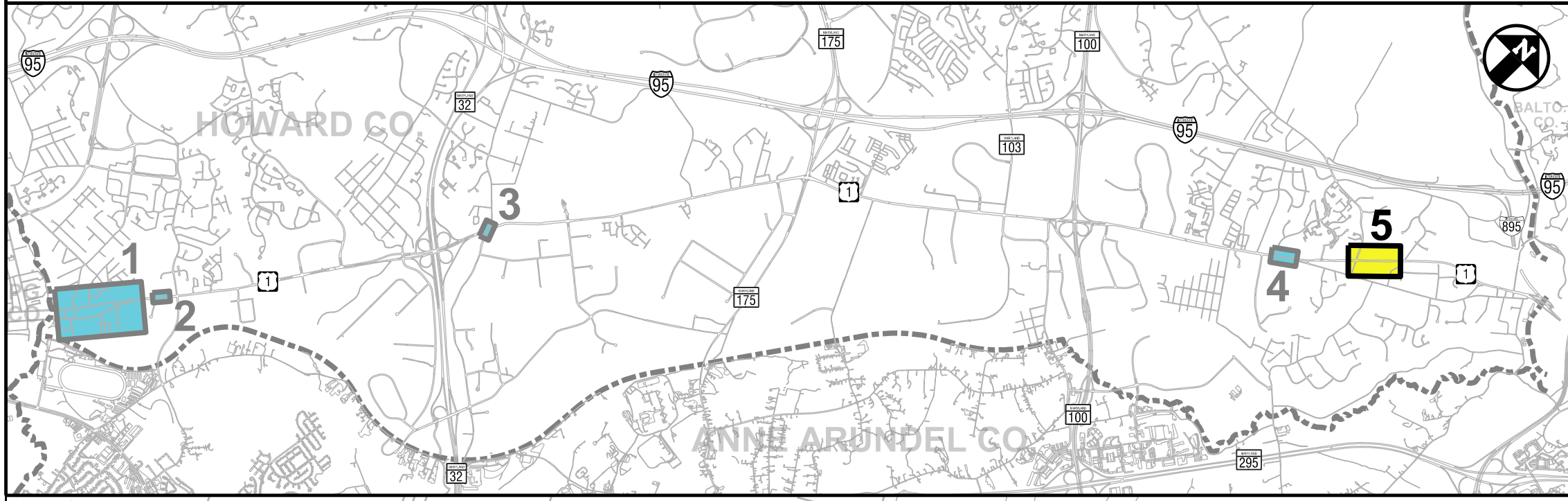


DESIGN REQUIREMENT:  
 ALTERATIONS NEEDED AT CULVERT BEFORE SIDEWALK CAN BE BUILT.  
 OPTION 1: EXTEND CULVERT HEADWALL, WHICH WILL ALLOW THE SIDEWALK TO BE BUILT OVER THE TOP OF THE CULVERT. THIS WILL GIVE PEDESTRIANS THE RIGHT OF WAY NECESSARY TO WALK.  
 OPTION 2: BUILD A WOODEN BRIDGE ACROSS THE CULVERT. (SEE IMAGE)  
 CAN BUILD SUPPORTS INTO THE GROUND ON EITHER SIDE OF THE CULVERT TO REDUCE THE LOAD ON THE BRIDGE. THIS IS LIKELY TO BE THE LESS EXPENSIVE OPTION.



OPERATOR\$USERNAME\$ PLOTTED: \$DATE\$ FILE NAME\$FILE\$

# KEY MAP



US 1 (Washington Boulevard) Safety Evaluation – Proposed Improvements: Concept # 5  
 Pedestrian-Activated Traffic Signal, Lighting, and Sidewalk Improvements  
 Montgomery Road to Doctor Patel Drive

OPERATOR: Murphy - PLOTTED: Thursday, September 13, 2018 AT 08:30 AM  
 FILE NAME: \\2014 69 Howard County Traffic PA1292014 \$1,360,383.00\Task 16 US 1 Pedestrian Safety Howard County.dwg\US1\_Concepts\_FINAL.dgn