

**Attachment P**  
Section III.8, Lower Main from the *Ellicott City*  
*Watershed Master Plan*  
&  
Illustrative Renderings

Prepared by: Mahan Rykiel

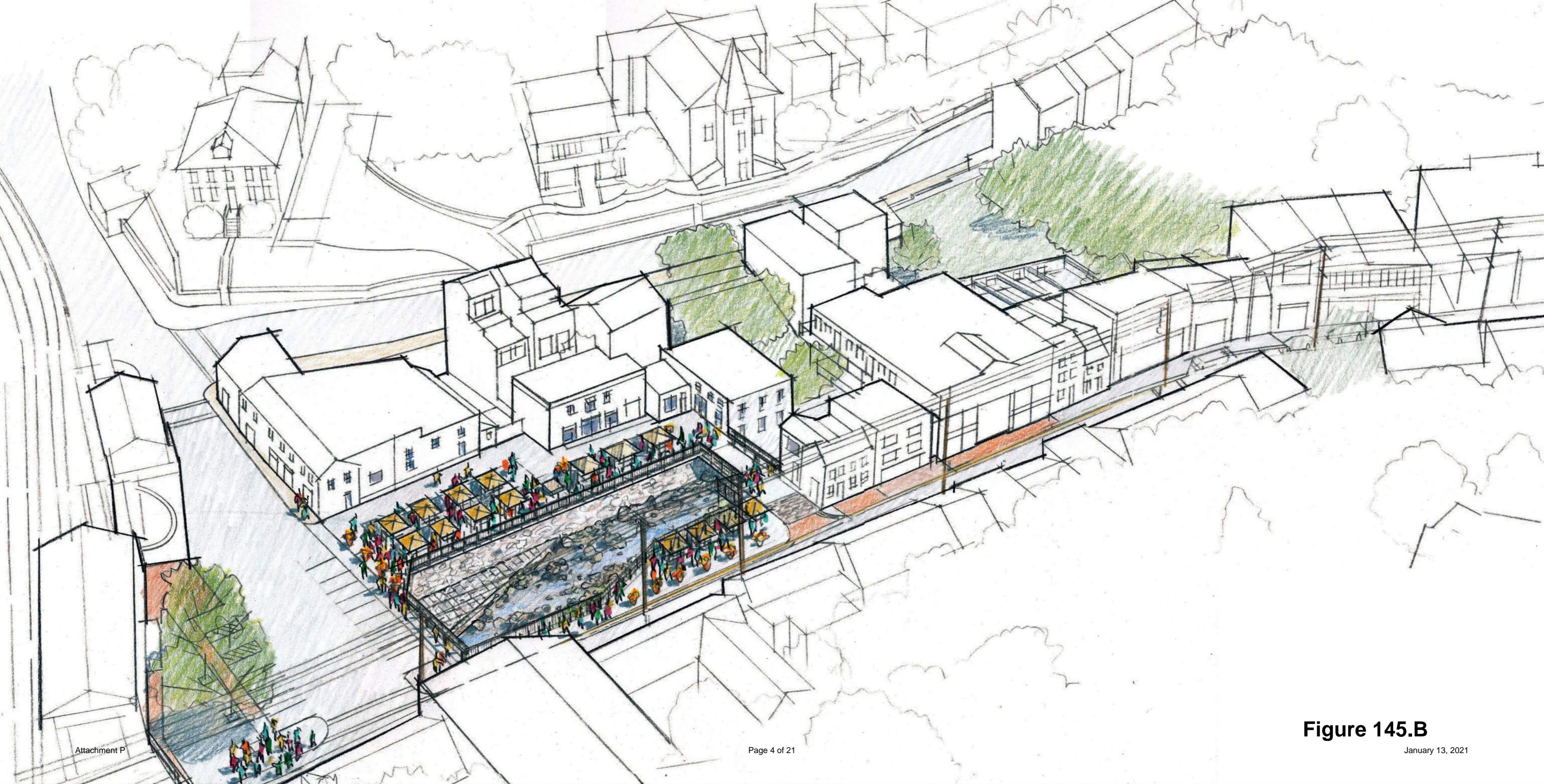
Date: January 13, 2021  
21 Pages including cover



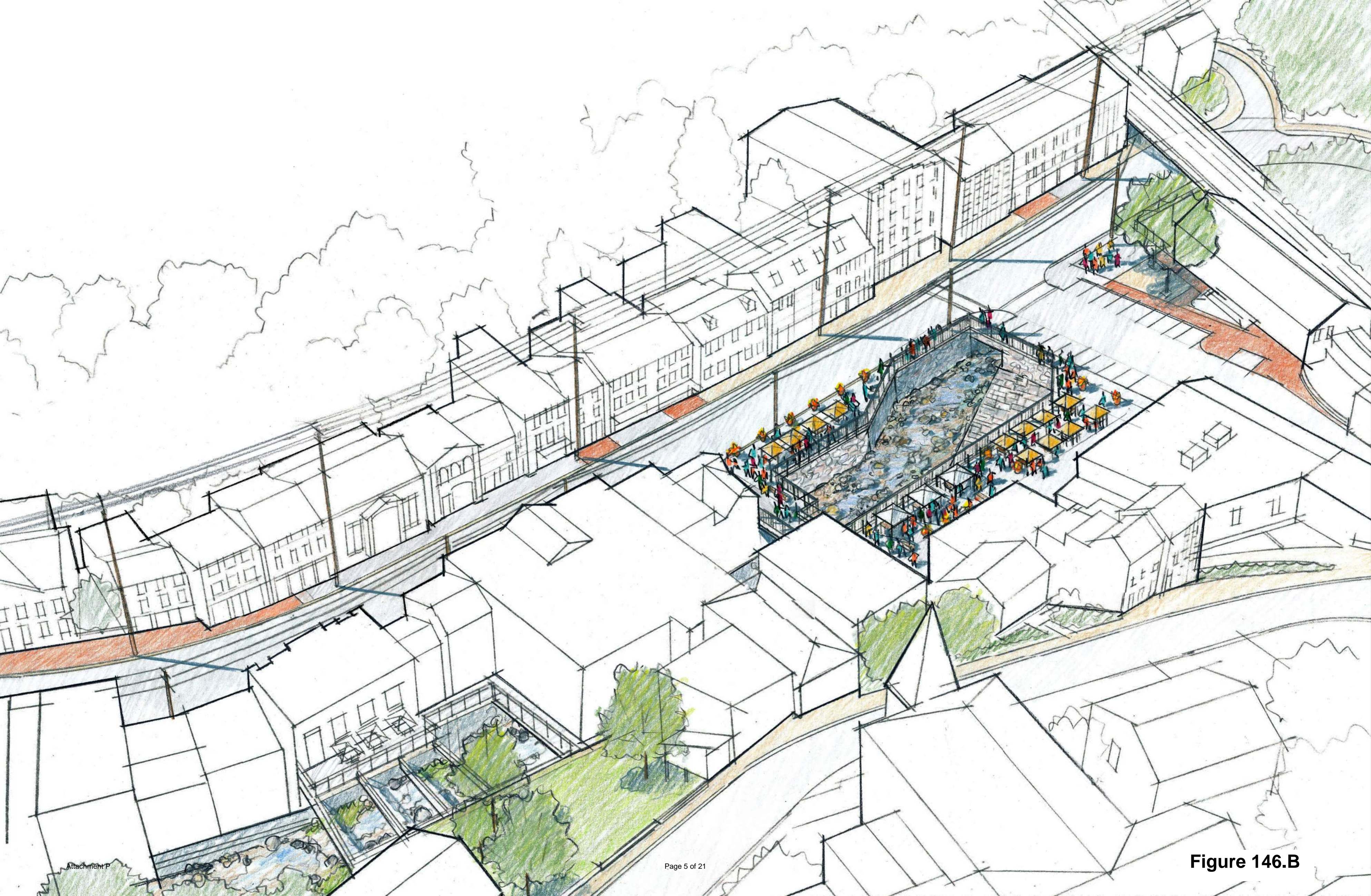
**Attachment P - Image 1**

Attachment P





**Figure 145.B**





★ OLD ELLICOTT CITY

Tiber Alley St.



# III.8

## Lower Main

### DESCRIPTION

The lower Main Street area, “Lower Main,” extends from the bend in Main Street (near Caplans/8125 Main St) to the Patapsco River bridge and includes the B&O Station Museum and Plaza, Tiber Park, Tiber Alley, the Oliver Viaduct railroad bridge and both sides of Main Street. Significant flood mitigation improvements are planned for this area as part of EC Safe and Sound that will result in building removal and a change to the area’s character.

### ELLICOTT CITY TODAY

#### HISTORIC AND CULTURAL RESOURCES

Focused on the B&O Station Museum, Lower Main represents the oldest part of Ellicott City and the historic center of rural industry for this early industrial community. In Ellicott Mills’ early years, businesses in Lower Main harnessed the power of the tributaries. A dam on the New Cut fed a mill race which ran along

an elevation higher than the Tiber Branch (parallel to St. Paul Street) before dropping to turn a water wheel. The Tiber meanwhile, was channelized with side walls



Figure 133: Key Plan — Lower Main



Figure 132: Spatial Breadth of Maryland Avenue