

**Appendix D.3 - 8111-8113 LIDAR**

24 Pages Total

8111-8113 MAIN STREET  
ELLICOTT CITY, MD.



ORIGINAL PHOTO BY: PATRICIA BIXLER REBER



Howard County Department of Public Works

7125 Riverwood Drive, Suite B ~ Columbia, Maryland

Bureau OF Engineering, Survey Division

Office: (410) 313-2417

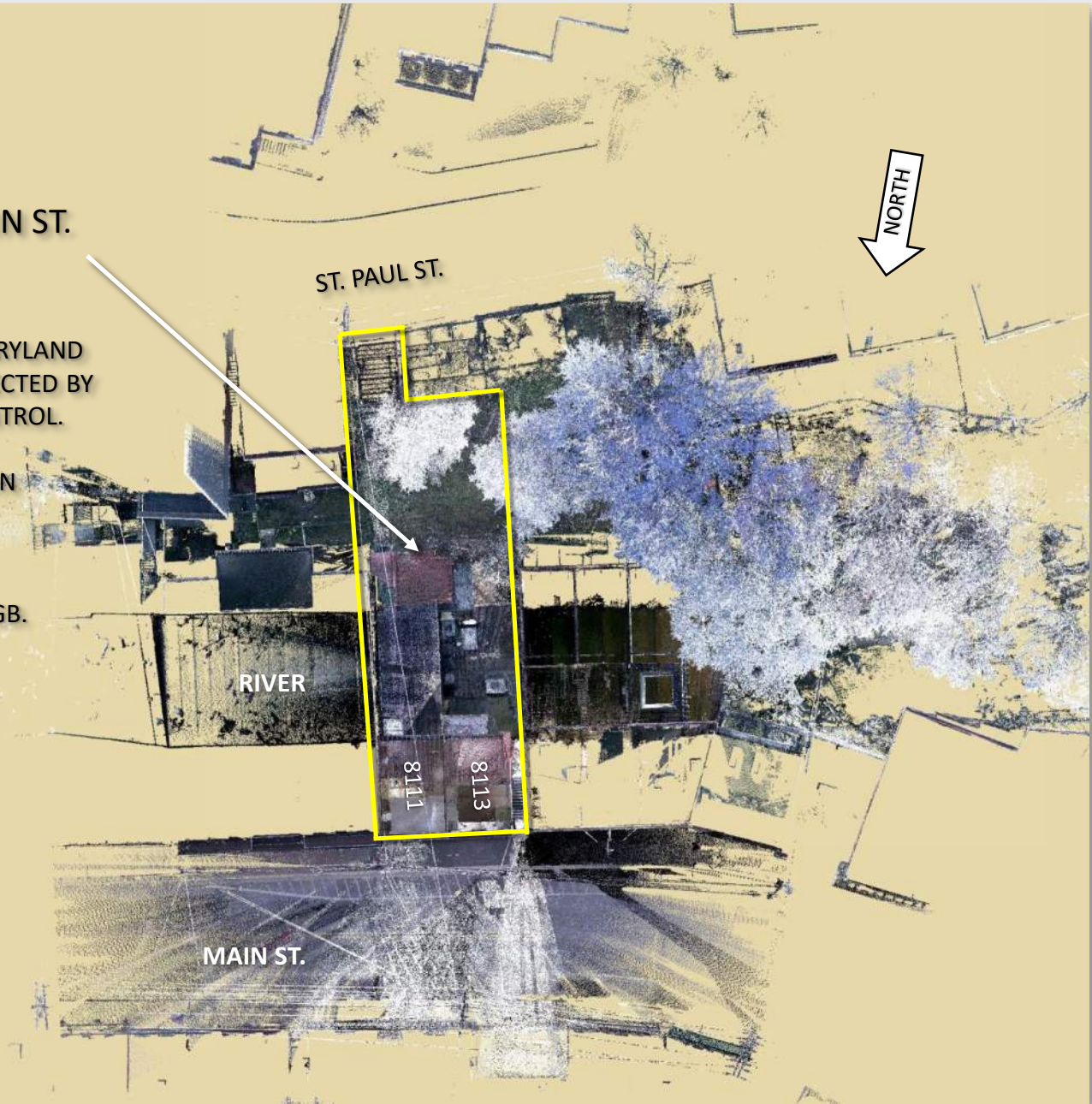
Fax: (410) 313-1854

[www.howardcountymd.gov](http://www.howardcountymd.gov)

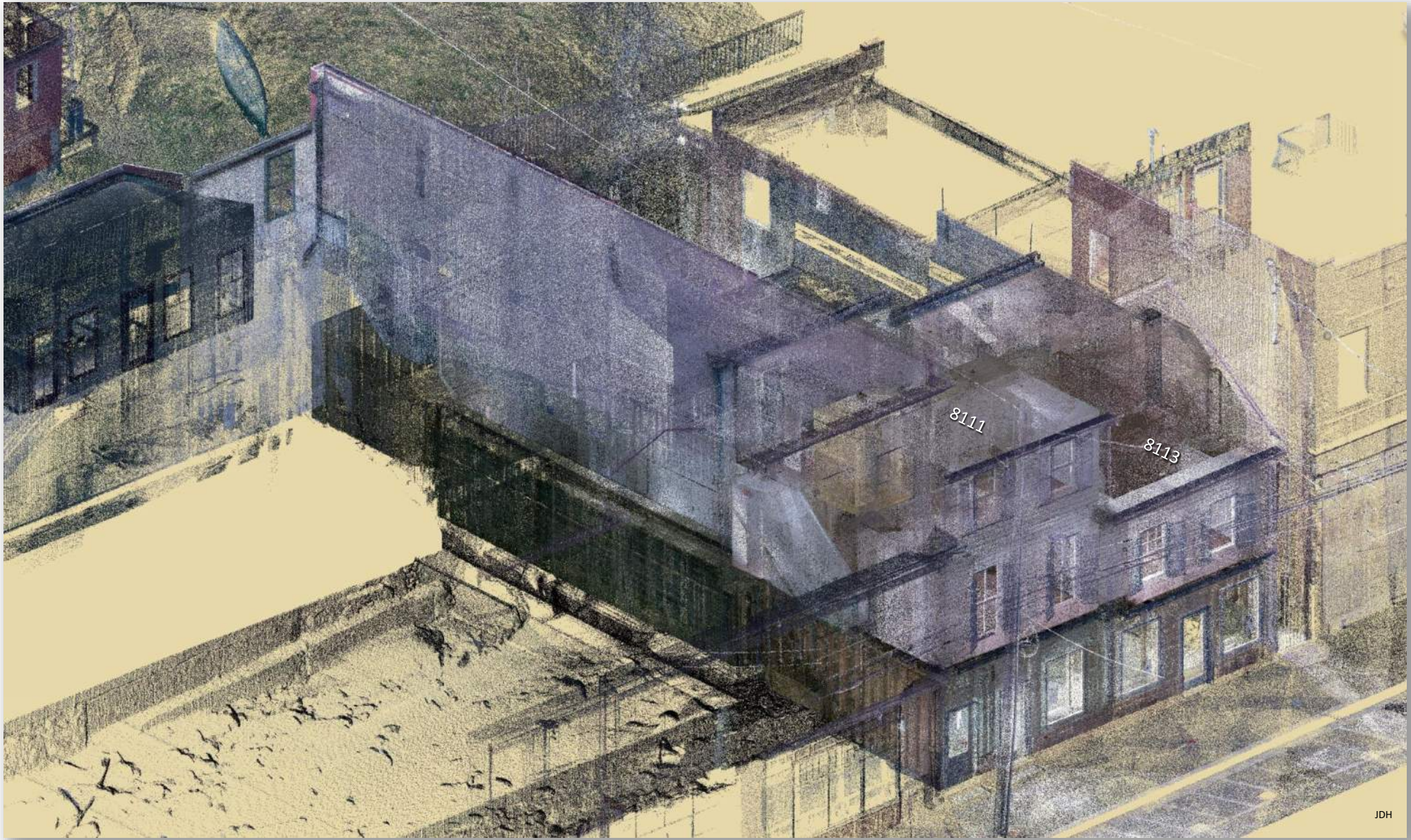
8111 & 8113 MAIN STREET, ELLICOTT CITY – FEBUARY 12-22, 2020  
TOP VIEW

8111 & 8113 MAIN ST.

1. 133 SCAN LOCATIONS.
2. COORDINATE SHOWN HERE ON ARE IN THE MARYLAND STATE GRID NAD '83 ADJUSTMENT '11 AS PROJECTED BY HOWARD COUNTY, ELLICOTT CITY PROJECT CONTROL. VERTICAL DATUM IS NAVD '88 GEOID 12B.
3. COORDINATES AND ELEVATIONS SHOWN HEREON ARE BASED ON SCAN OBSERVATIONS.
4. FALSE COLOR USED ON SOME SLIDES DUE TO DARKNESS OF BUILDING.
5. CLEANED, MERGED AND COORDINATED FILE 29GB. PROJECT FOLDER 153GB.



8111 & 8113 MAIN STREET, ELLICOTT CITY – FEBUARY 12-22, 2020  
LOOKING SOUTH EAST



JDH



Howard County Department of Public Works

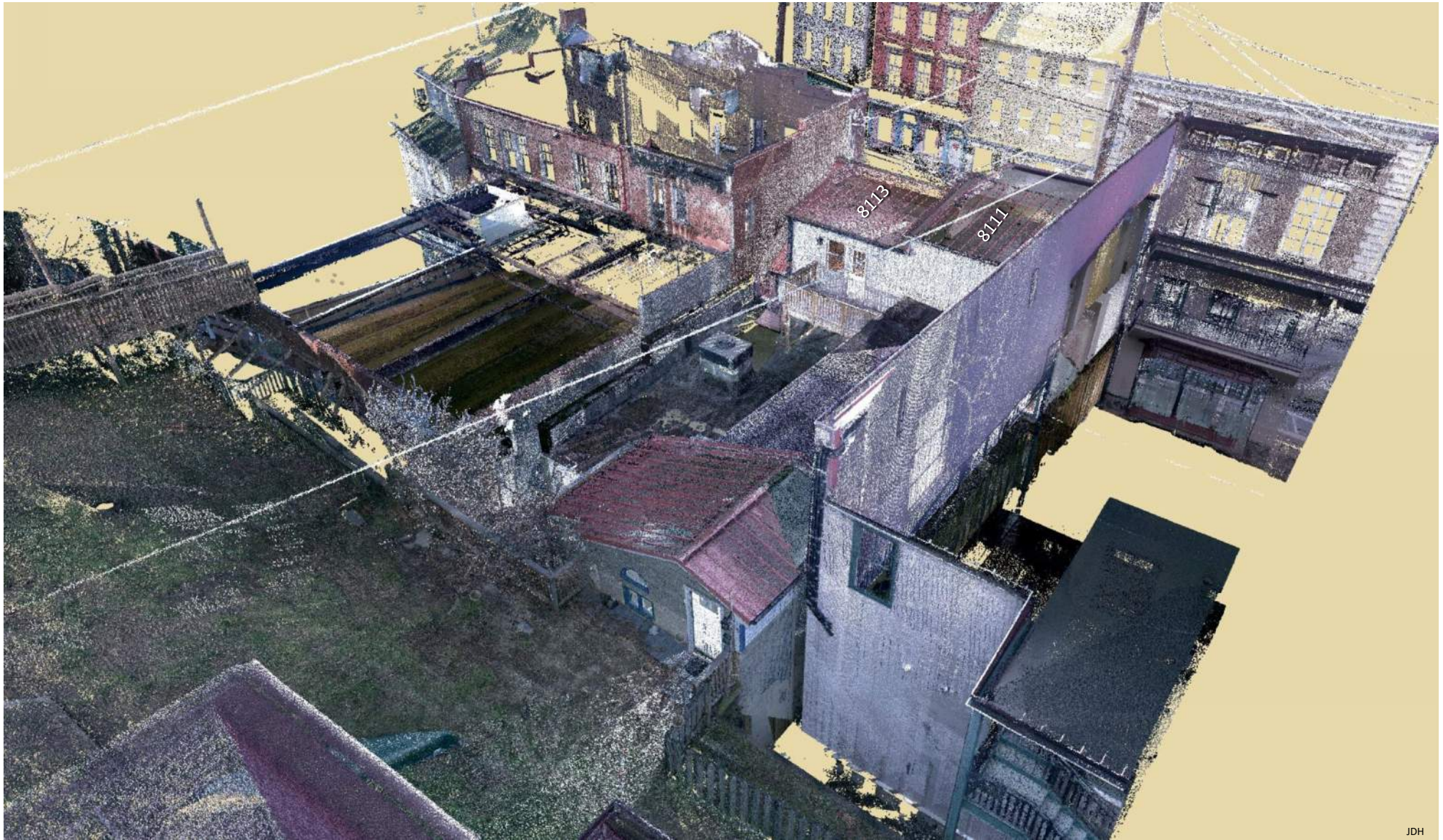
7125 Riverwood Drive, Suite B ~ Columbia, Maryland

Bureau OF Engineering, Survey Division Office: (410) 313-2417

Fax: (410) 313-1854

[www.howardcountymd.gov](http://www.howardcountymd.gov)

8111 & 8113 MAIN STREET, ELLICOTT CITY – FEBUARY 12-22, 2020  
LOOKING NORTH WEST



JDH



Howard County Department of Public Works

7125 Riverwood Drive, Suite B ~ Columbia, Maryland

Bureau OF Engineering, Survey Division Office: (410) 313-2417

Fax: (410) 313-1854

[www.howardcountymd.gov](http://www.howardcountymd.gov)

8111 & 8113 MAIN STREET, ELLICOTT CITY – FEBUARY 12-22, 2020  
LOOKING NORTH



Howard County Department of Public Works

7125 Riverwood Drive, Suite B ~ Columbia, Maryland

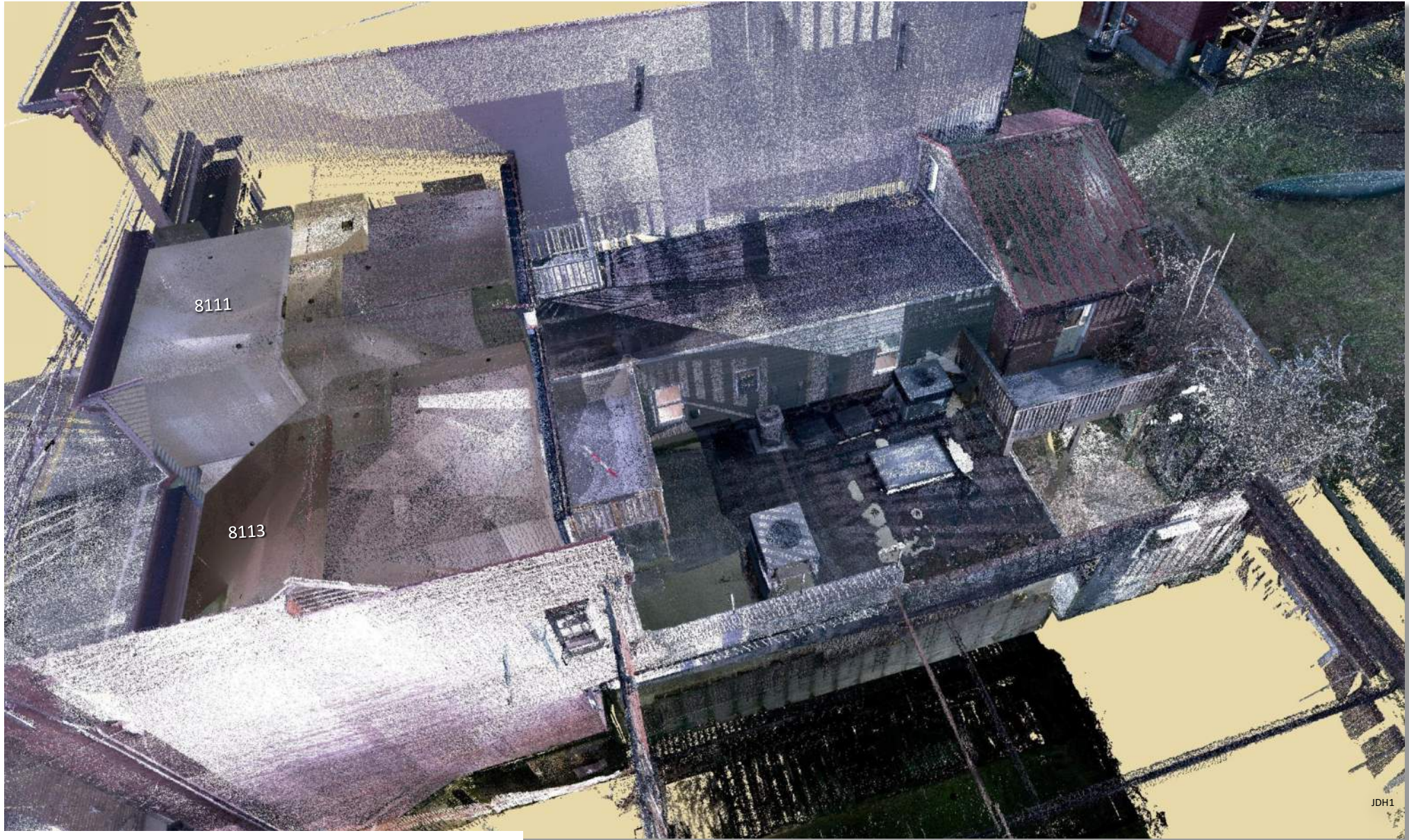
Bureau OF Engineering, Survey Division      Office: (410) 313-2417

Fax: (410) 313-1854

[www.howardcountymd.gov](http://www.howardcountymd.gov)

JDH

8111 & 8113 MAIN STREET, ELLICOTT CITY – FEBUARY 12-22, 2020  
LOOKING EAST



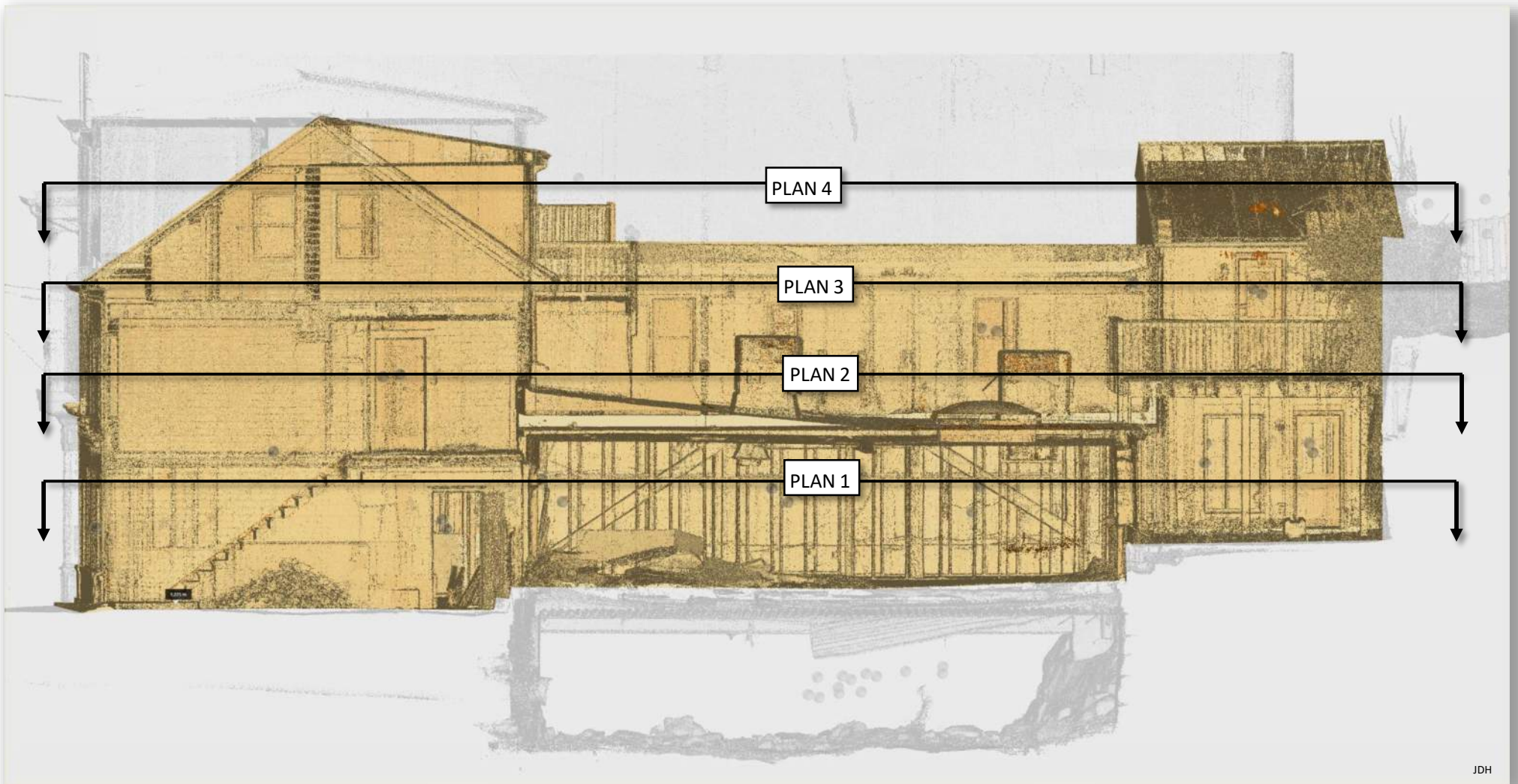
JDH1

8111 & 8113 MAIN STREET, ELLICOTT CITY – FEBUARY 12-22, 2020  
LOOKING SOUTH EAST



Howard County Department of Public Works  
7125 Riverwood Drive, Suite B ~ Columbia, Maryland  
Bureau OF Engineering, Survey Division    Office: (410) 313-2417  
Fax: (410) 313-1854  
[www.howardcountymd.gov](http://www.howardcountymd.gov)

8111 & 8113 MAIN STREET, ELLICOTT CITY – FEBUARY 12-22, 2020  
INDEX TO FLOOR PLANS



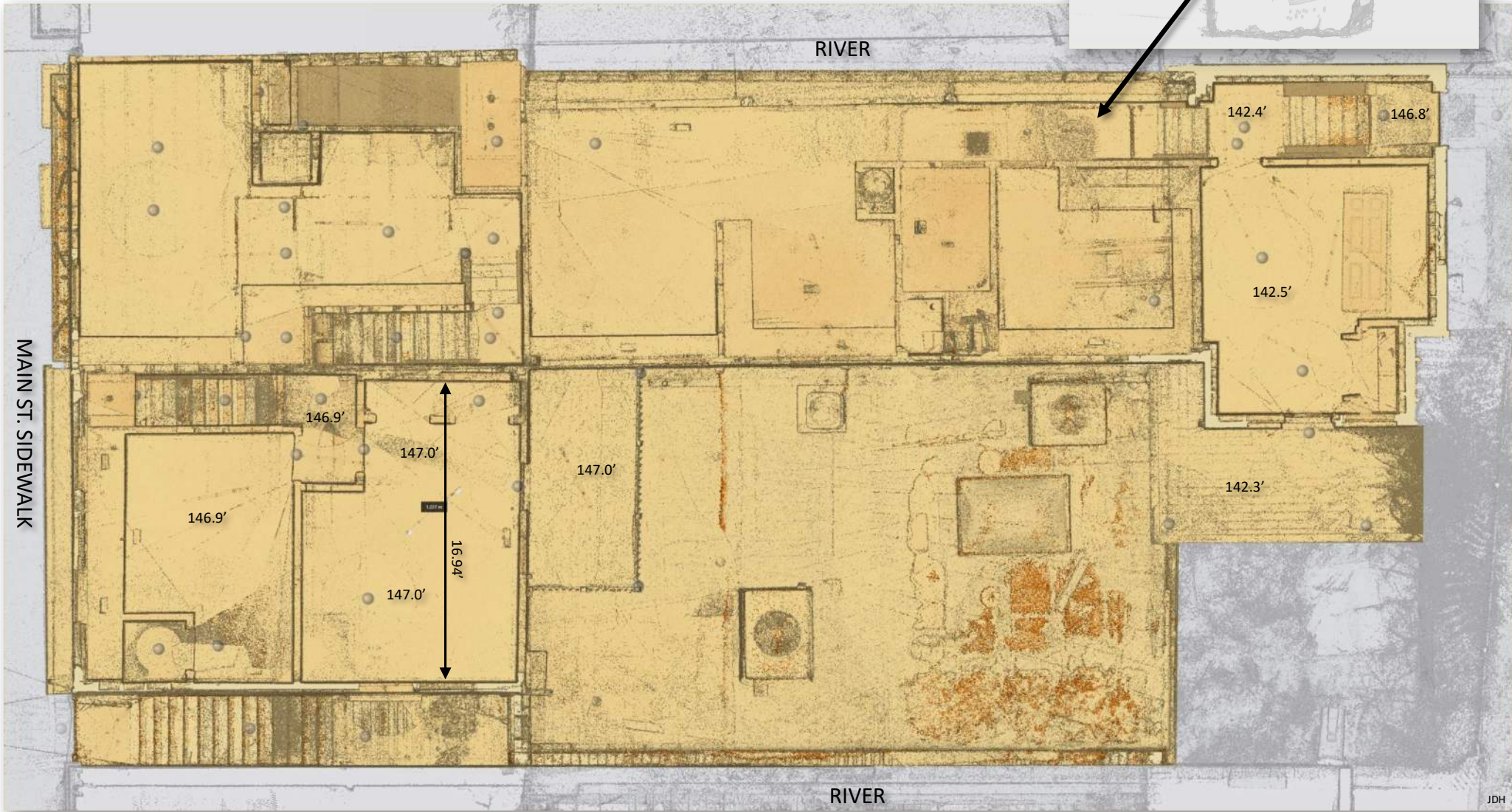
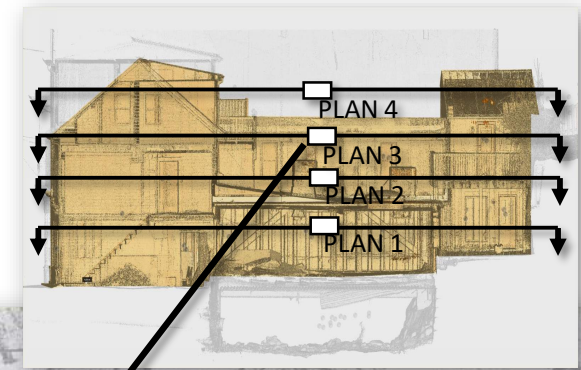
JDH





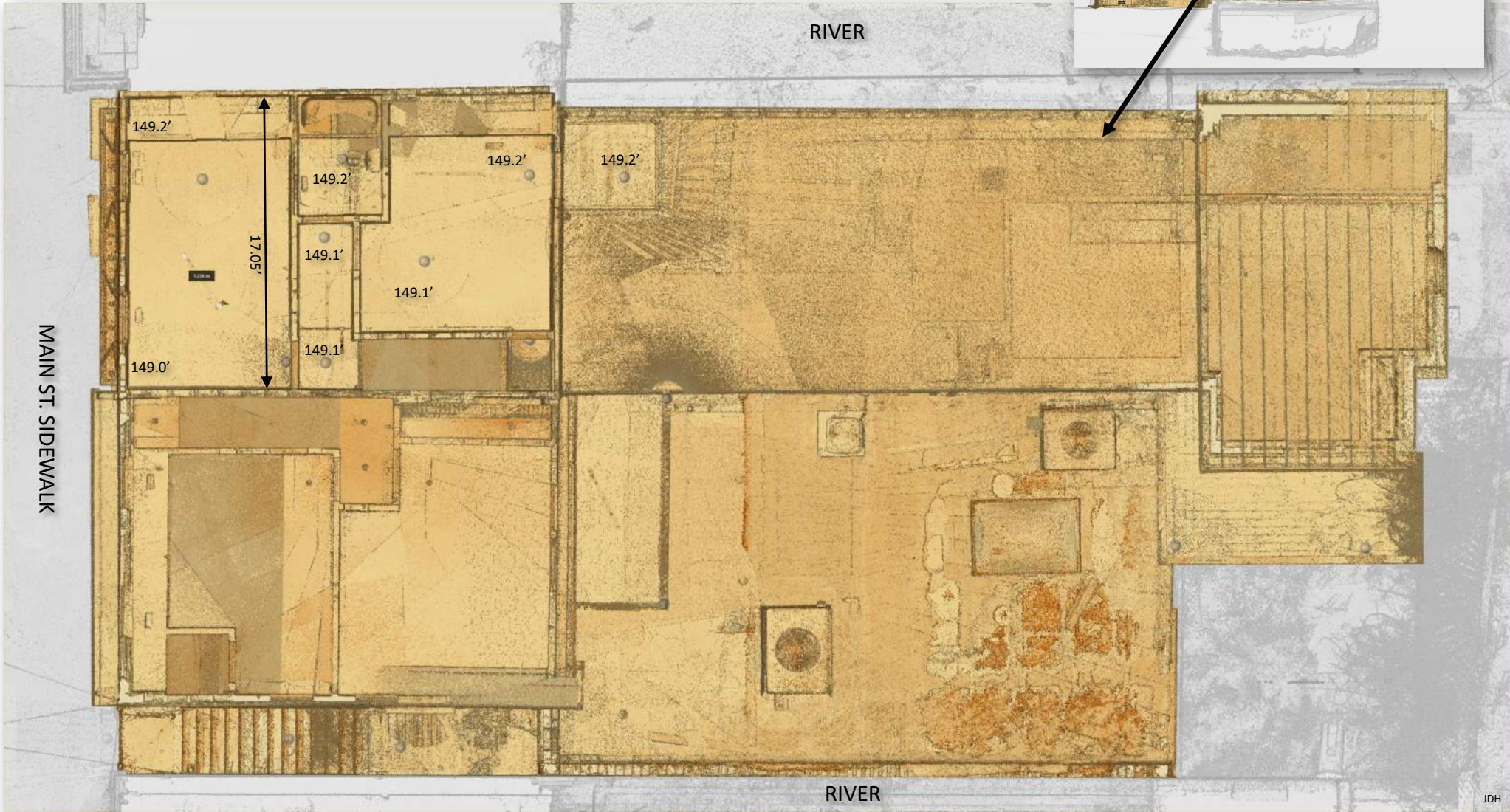
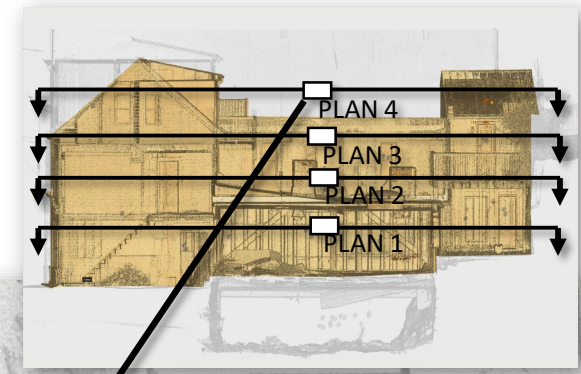


8111 & 8113 MAIN STREET, ELLICOTT CITY – FEBRUARY 12-22, 2020  
 FLOOR PLAN 3





8111 & 8113 MAIN STREET, ELLICOTT CITY – FEBUARY 12-22, 2020  
FLOOR PLAN 4



MAIN ST. SIDEWALK

RIVER

RIVER

JDH



Howard County Department of Public Works  
7125 Riverwood Drive, Suite B ~ Columbia, Maryland  
Bureau OF Engineering, Survey Division    Office: (410) 313-2417  
Fax: (410) 313-1854  
[www.howardcountymd.gov](http://www.howardcountymd.gov)

8111 & 8113 MAIN STREET, ELLICOTT CITY – FEBUARY 12-22, 2020  
INDEX TO ELEVATION VIEWS



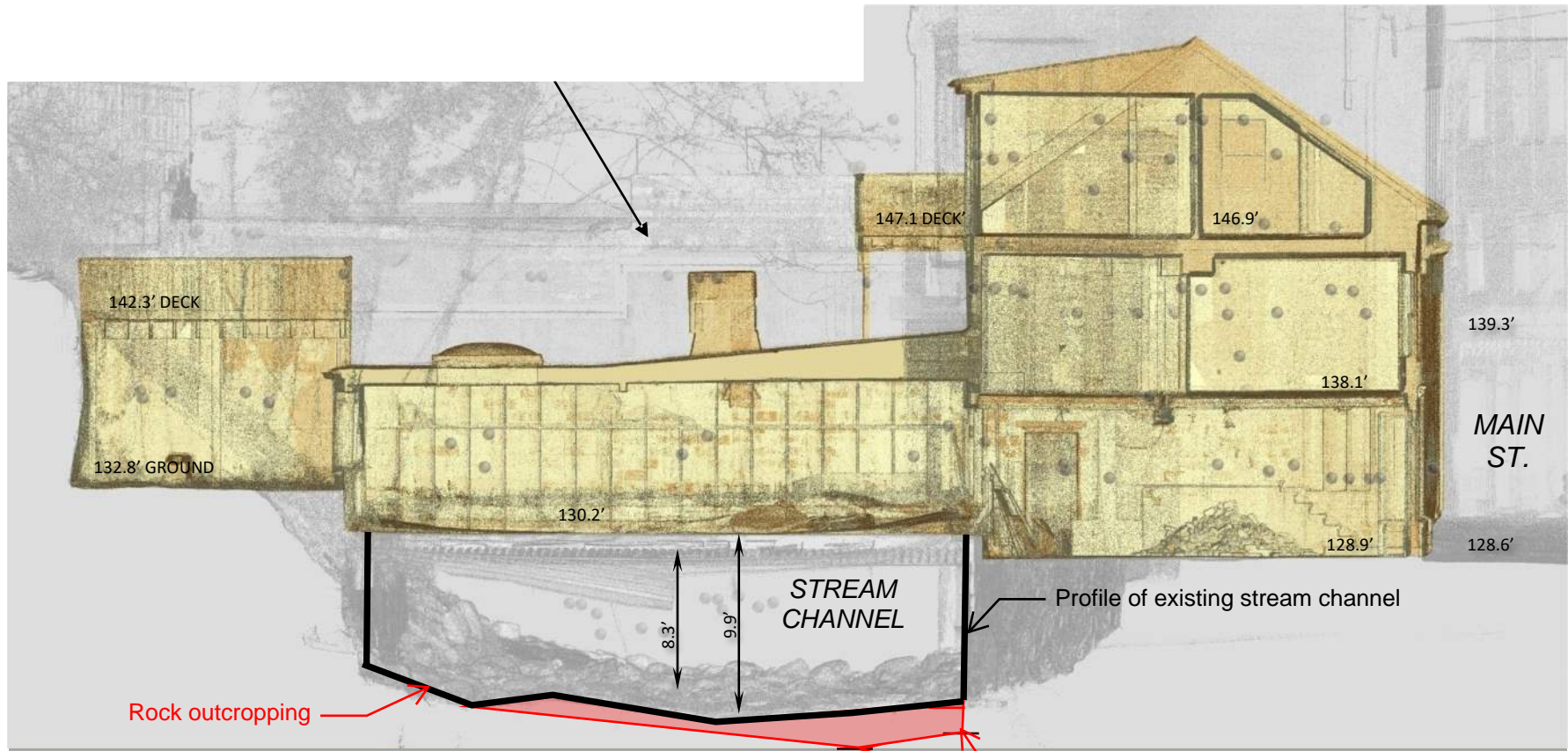
JDH











Test pit refusal elevation (bedrock)

8111 & 8113 MAIN STREET, ELLICOTT CITY – FEBRUARY 12-22, 2020  
 SOUTH RIVER WALL ELEVATION



JDH

# 8111 & 8113 MAIN STREET, ELLICOTT CITY – FEBUARY 12-22, 2020

## NORTH RIVER WALL ELEVATION

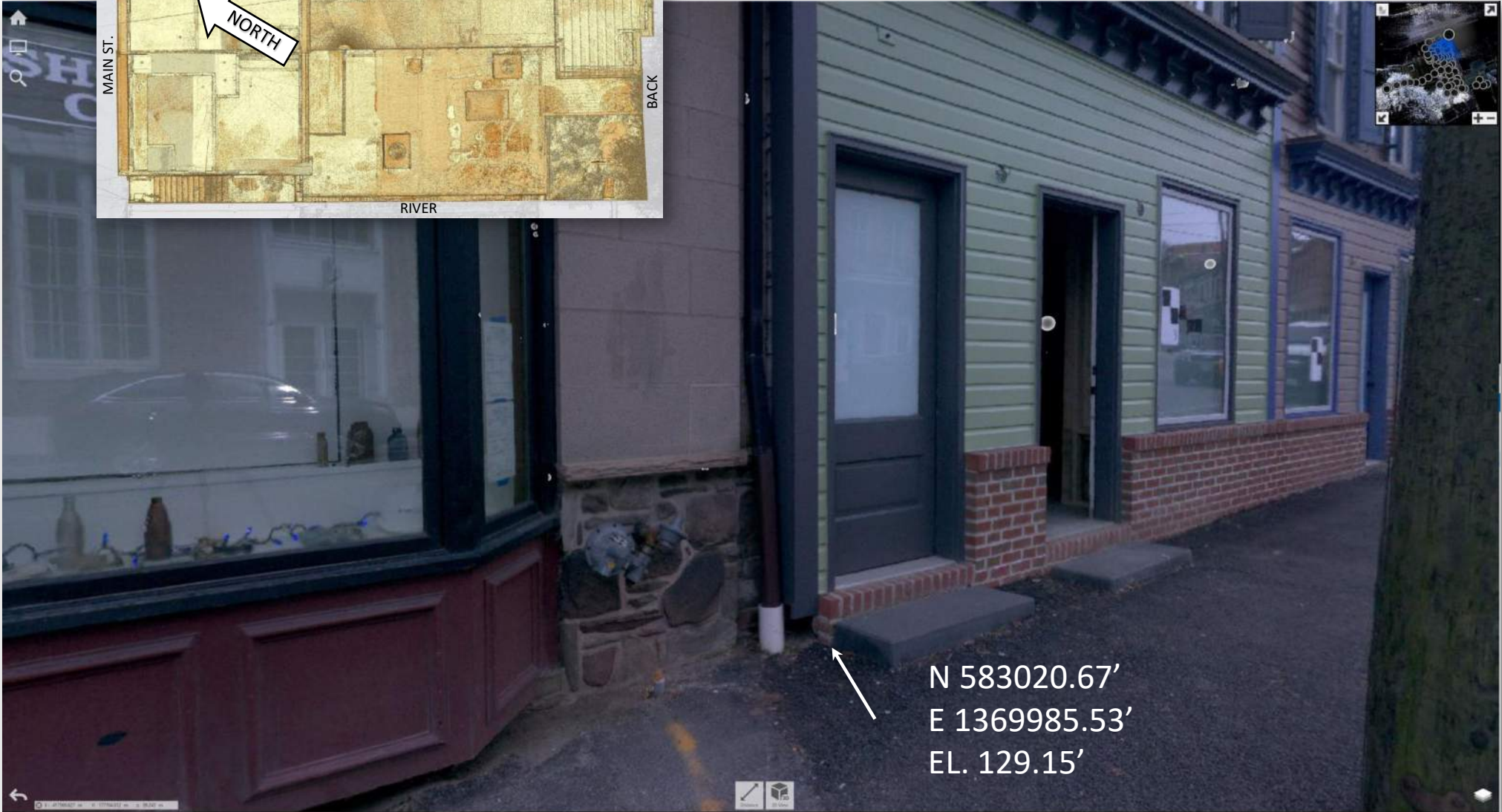


**Howard County Department of Public Works**  
 7125 Riverwood Drive, Suite B ~ Columbia, Maryland  
 Bureau OF Engineering, Survey Division    Office: (410) 313-2417  
 Fax: (410) 313-1854  
 www.howardcountymd.gov

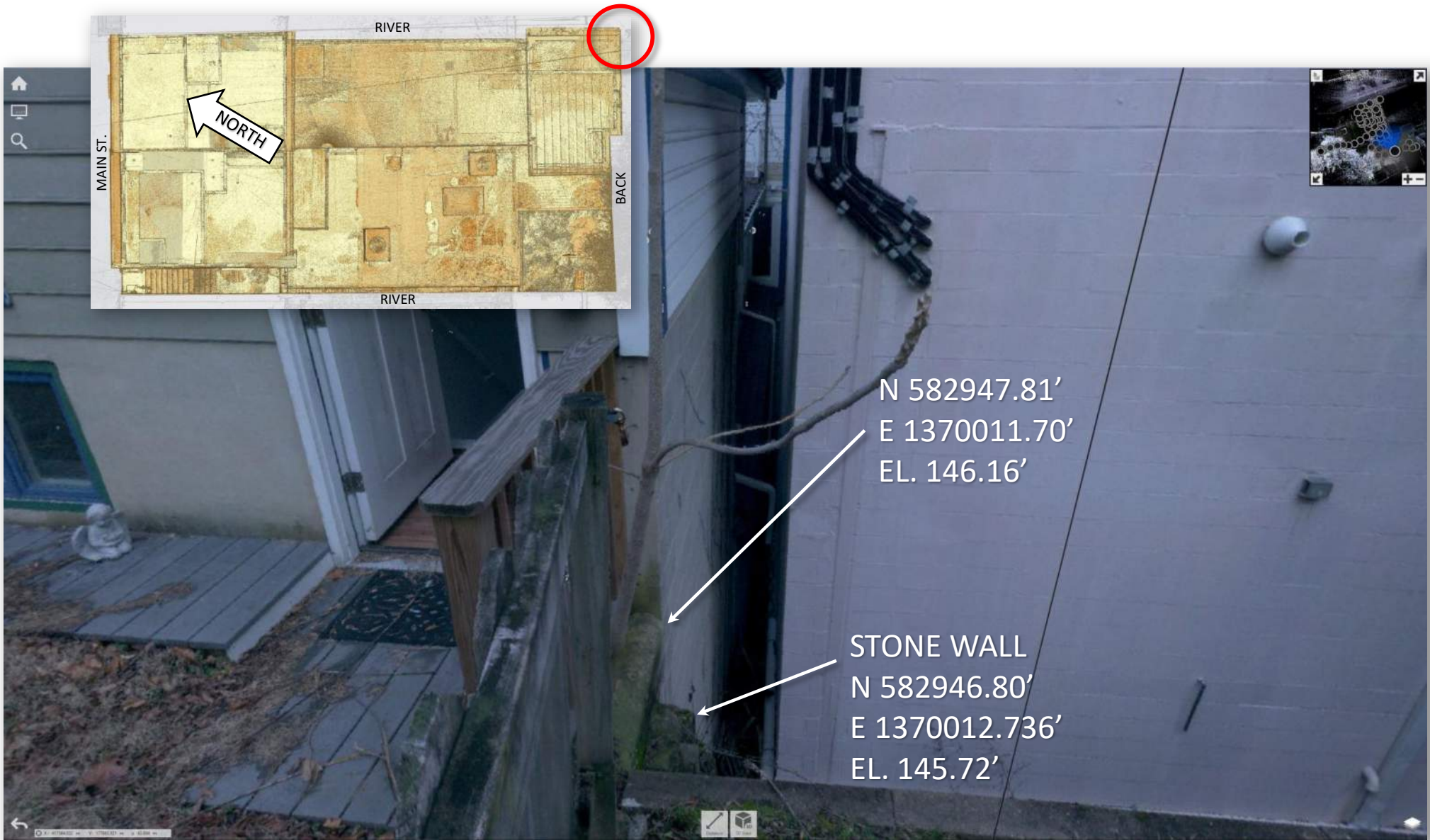
8111 & 8113 MAIN STREET, ELLICOTT CITY – FEBUARY 12-22, 2020  
BUILDING COORDINATES – NW FRONT CORNER



8111 & 8113 MAIN STREET, ELLICOTT CITY – FEBUARY 12-22, 2020  
BUILDING COORDINATES – NORTH FRONT CORNER



8111 & 8113 MAIN STREET, ELLICOTT CITY – FEBUARY 12-22, 2020  
BUILDING COORDINATES – SE BACK CORNER

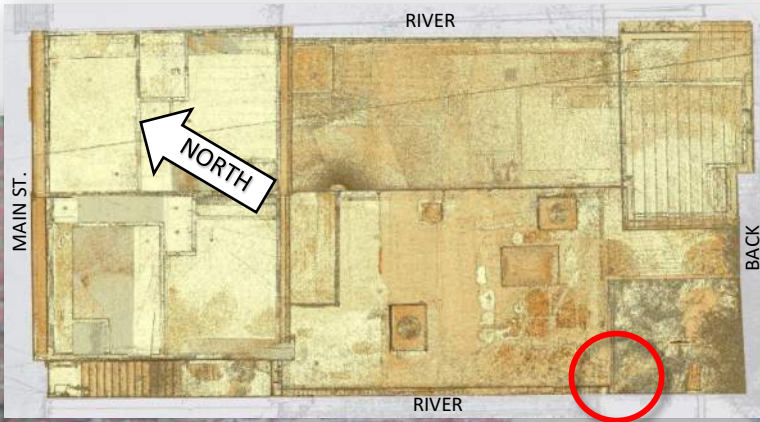


8111 & 8113 MAIN STREET, ELLICOTT CITY – FEBUARY 12-22, 2020  
BUILDING COORDINATES – SE BACK CORNER

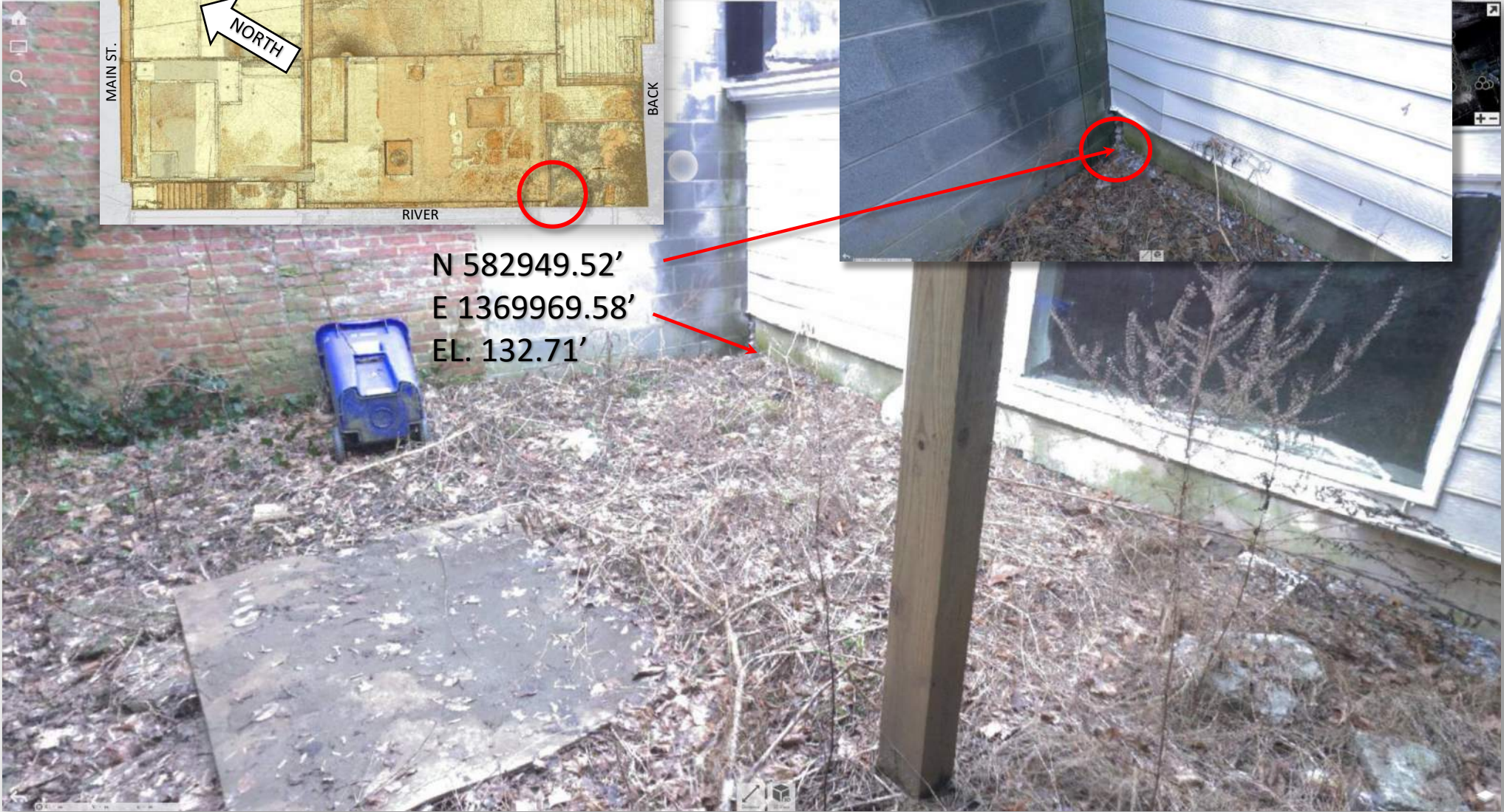


Howard County Department of Public Works  
7125 Riverwood Drive, Suite B ~ Columbia, Maryland  
Bureau OF Engineering, Survey Division Office: (410) 313-2417  
Fax: (410) 313-1854  
www.howardcountymd.gov

8111 & 8113 MAIN STREET, ELLICOTT CITY – FEBUARY 12-22, 2020  
BUILDING COORDINATES – SW BACK CORNER



N 582949.52'  
E 1369969.58'  
EL. 132.71'



Howard County Department of Public Works  
7125 Riverwood Drive, Suite B ~ Columbia, Maryland  
Bureau OF Engineering, Survey Division    Office: (410) 313-2417  
Fax: (410) 313-1854  
www.howardcountymd.gov