

# Overview – EC Safe & Sound



- 7 Individual Projects
- **Major Improvement Program**
- **Substantial benefit to Ellicott City & Howard County**
- Supports County Seat of Howard County
- County's 2<sup>nd</sup> largest employment hub
- Historic Ellicott City is the center of the CDP
  - One of Howard County's most visible and recognizable historic communities
  - 955 jobs supported

Project	Status
<i>Quaker Mill Dry Flood Mitigation</i>	Pre-Construction
<i>H-7 Dry Flood Mitigation</i>	Construction
<i>Maryland Avenue Culvert / Terraced Floodplain</i>	Final Design
<i>North Tunnel</i>	Final Design
NC-3	Concept Design
H-4	Concept Design
T-1	Planning



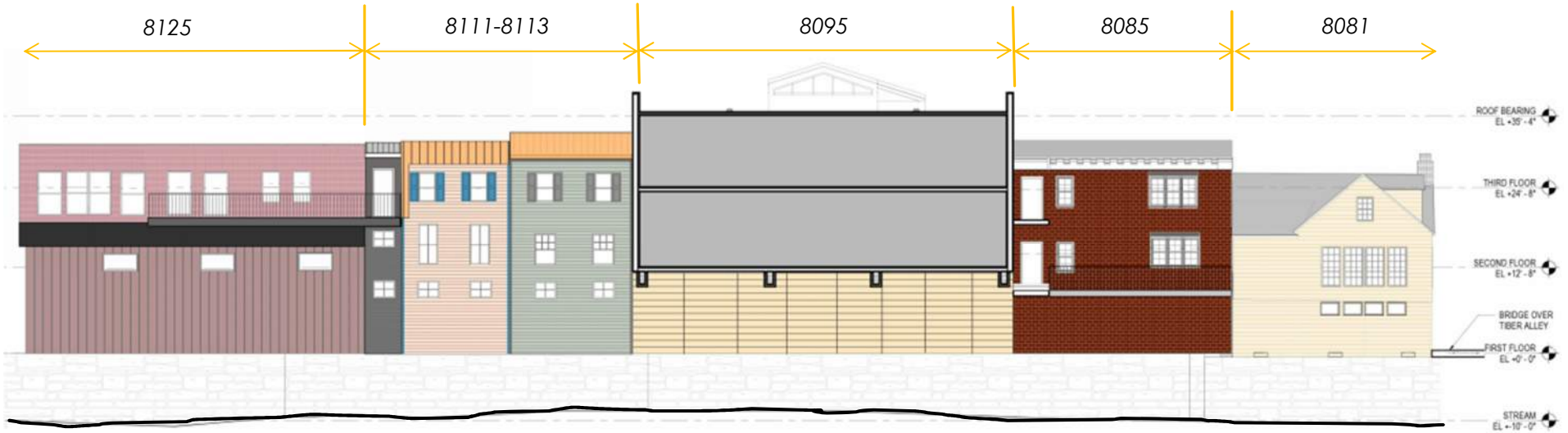
**Channel Constriction – 2018 Flood**



# Rear Facades – Traditional Storyboard



# Rear Facades – Traditional Approach



North Elevation



Approach A  
East Façade - 8095





# Rear Facades – Contemporary Storyboard



Precedent A



Precedent E



Precedent B



Precedent C



Precedent D

# Rear Facades – Contemporary Storyboard



Fiber Cement Image A



Fiber Cement Textures

## Brick veneer



Brick Image A



Brick Image B

## Fiber cement veneer



Terra Cotta Image A



Terra Cotta Image B

## Terra cotta veneer

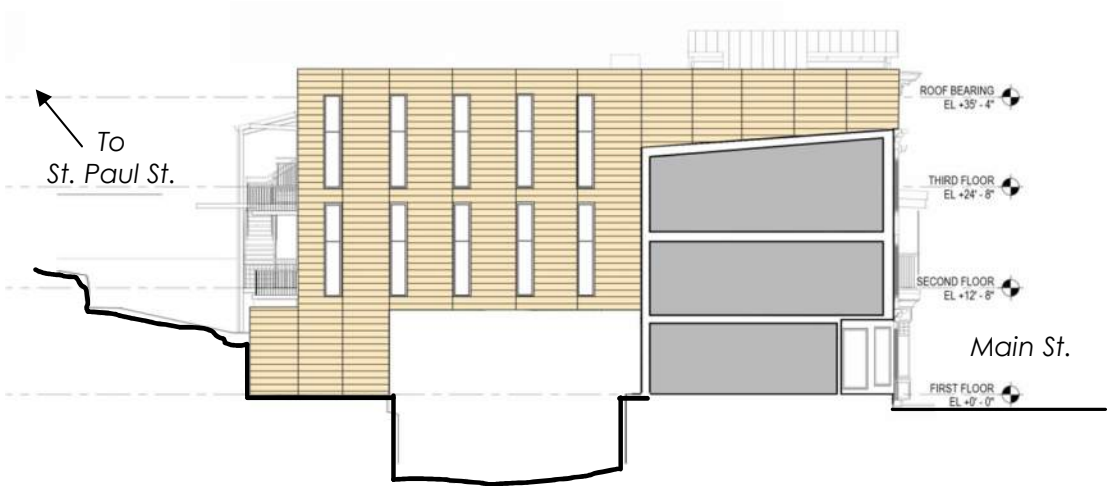


Stone Image A

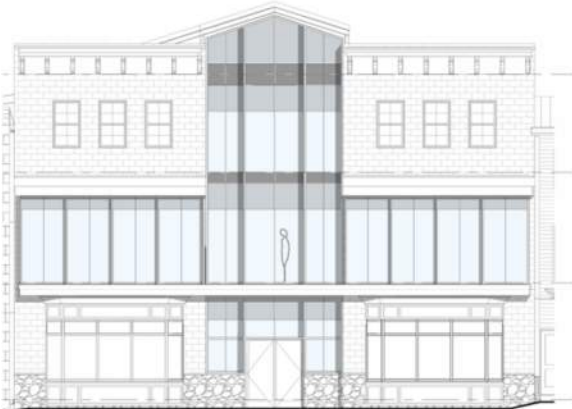
## Stone veneer



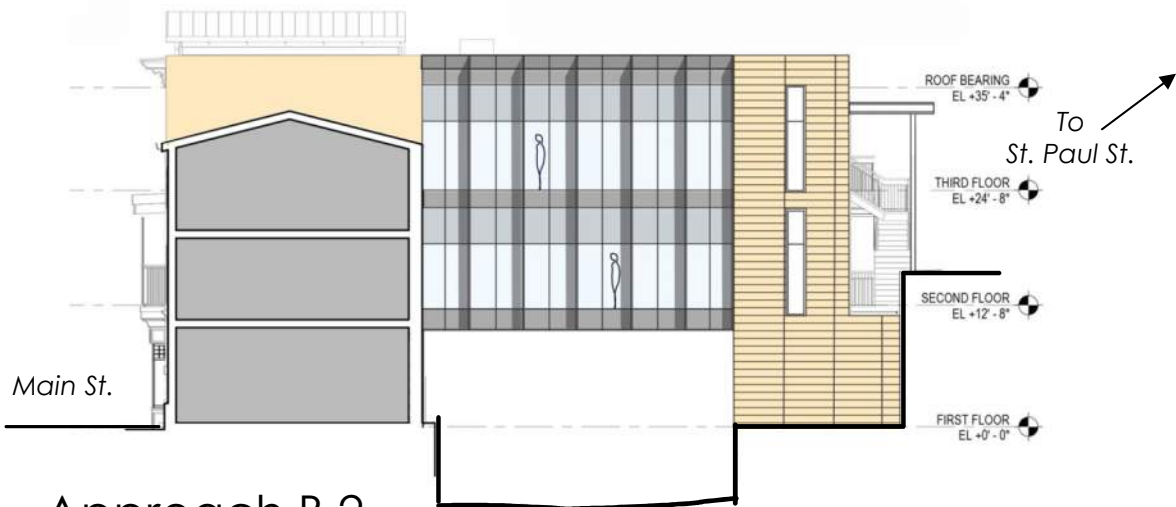
# Rear Facades – Contemporary Approach



Approach B.1  
East Façade - 8095



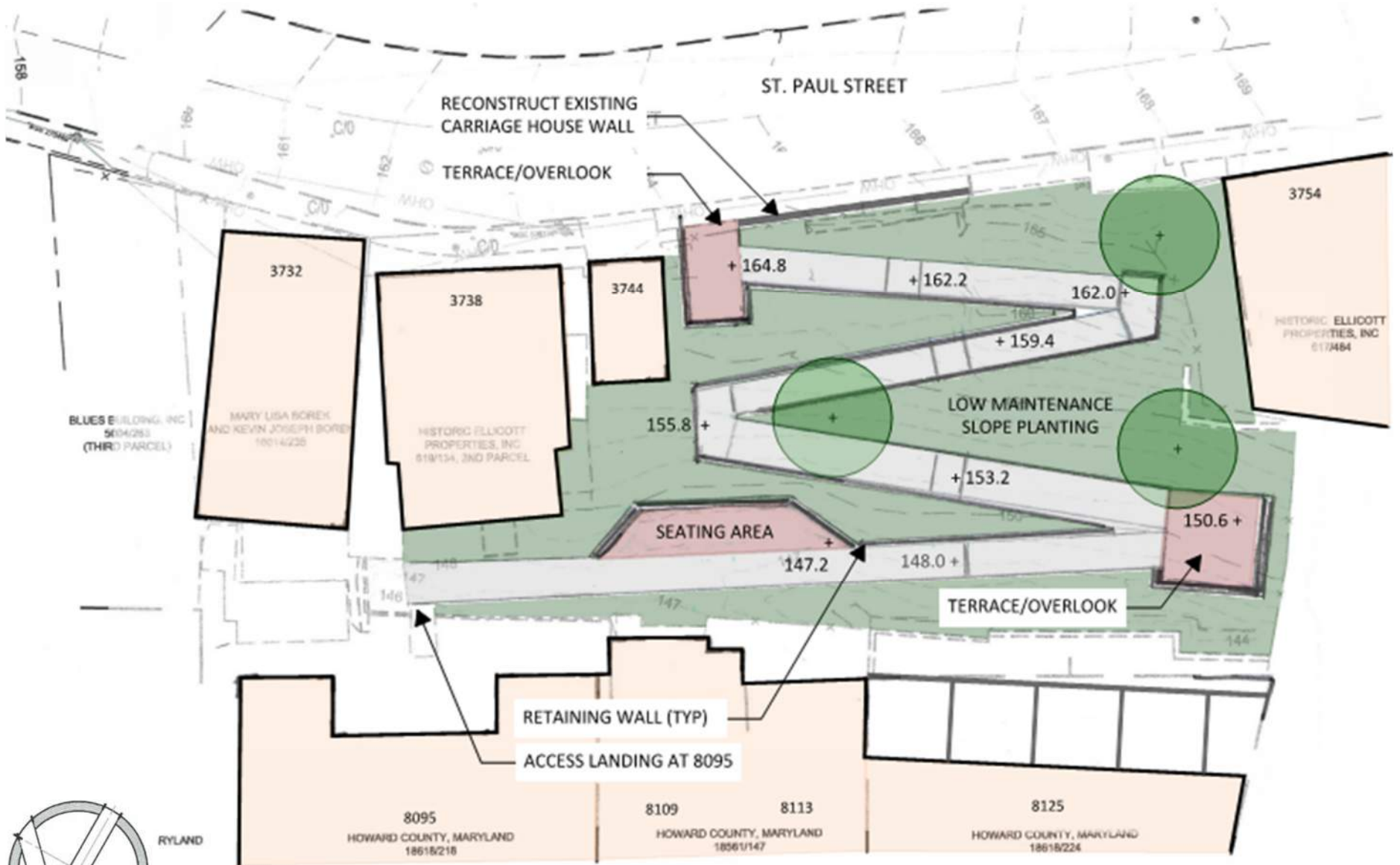
Approach B  
North Façade - 8095



Approach B.2  
West Façade - 8095



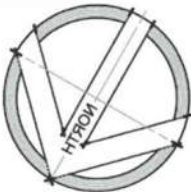
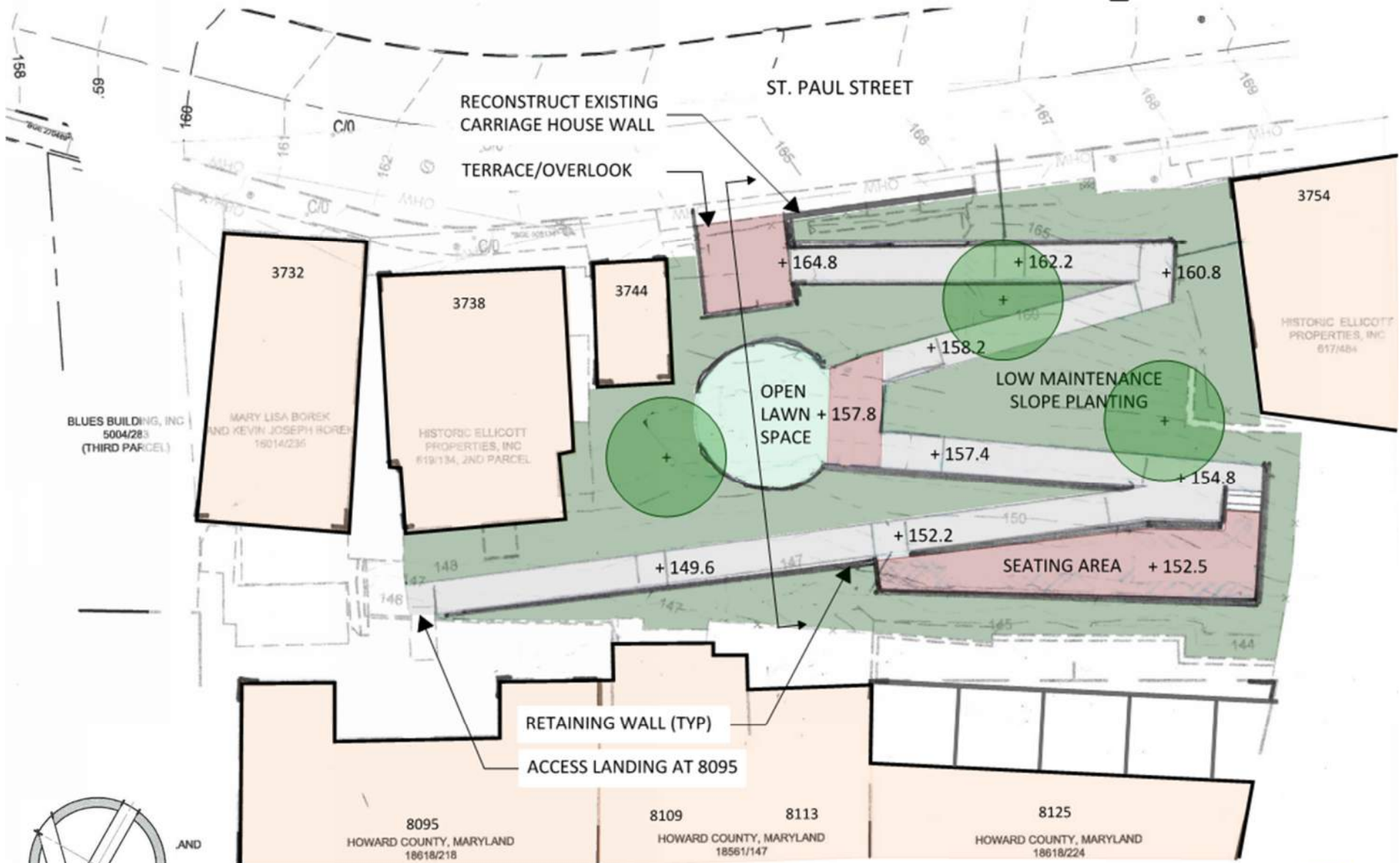
# St. Paul Street – Access & Placemaking



Approach A

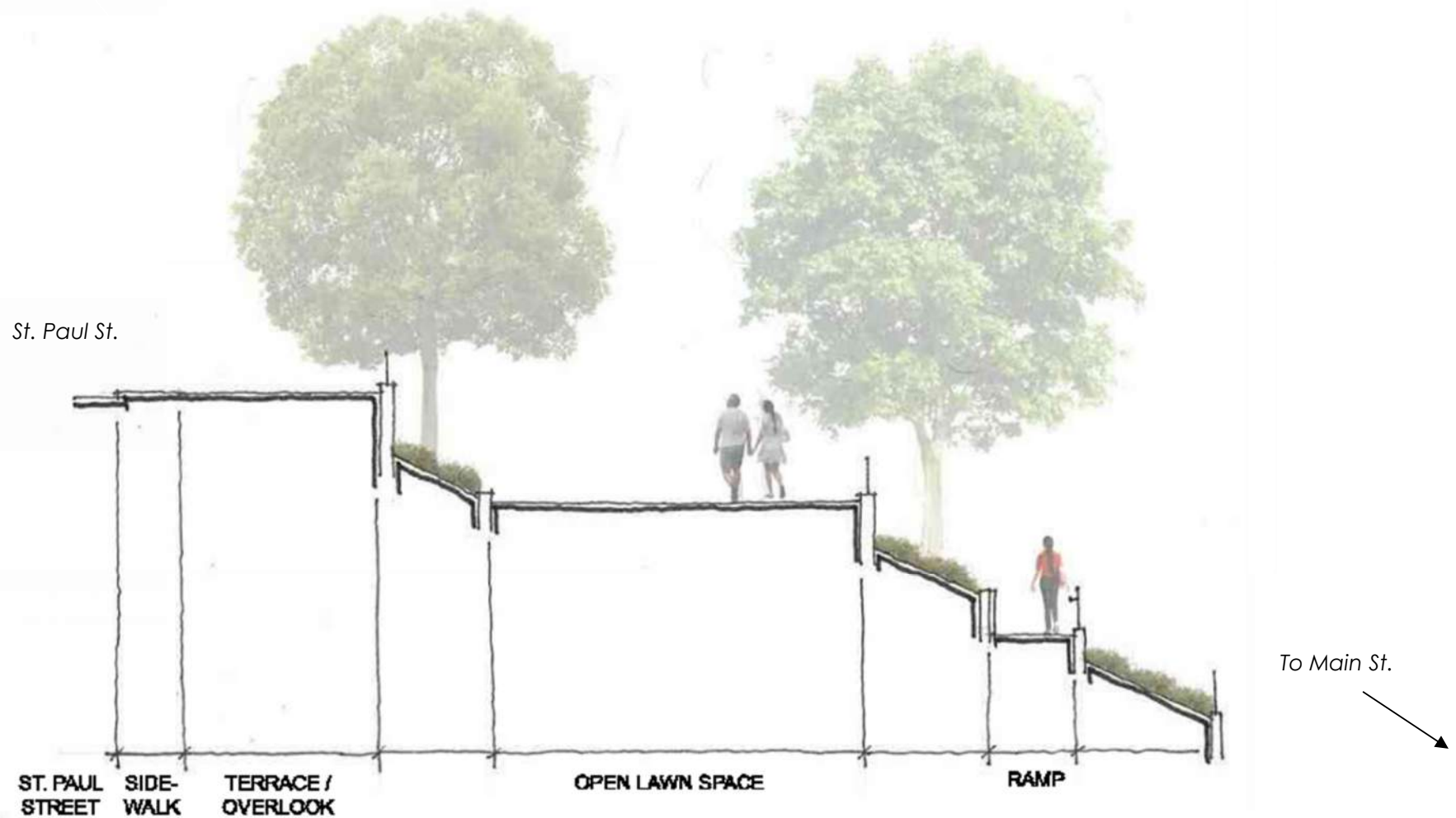


# St. Paul Street – Access & Placemaking



Approach B

# St. Paul Street – Site Section



2021-09-15 HPC Channel Constriction Project

Approach B – Site Section

53A



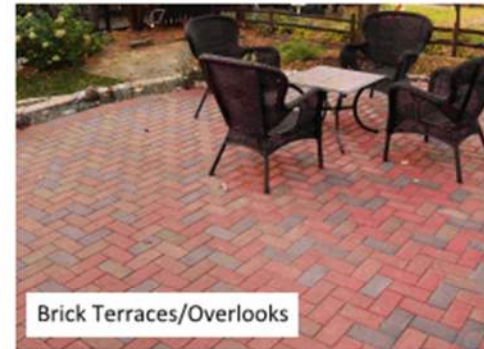
# St. Paul Street – Precedent Images



Existing Main Street Terraces



Ramp Handrails



Brick Terraces/Overlooks



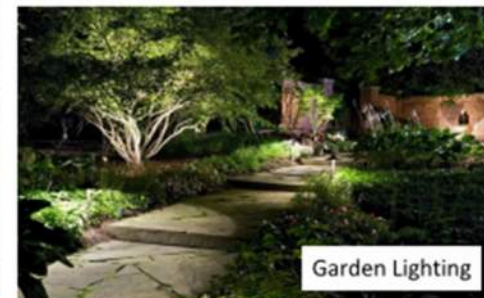
Stone Wall Option #1



Stone Wall Option #2



Stone Wall Option #3



Garden Lighting