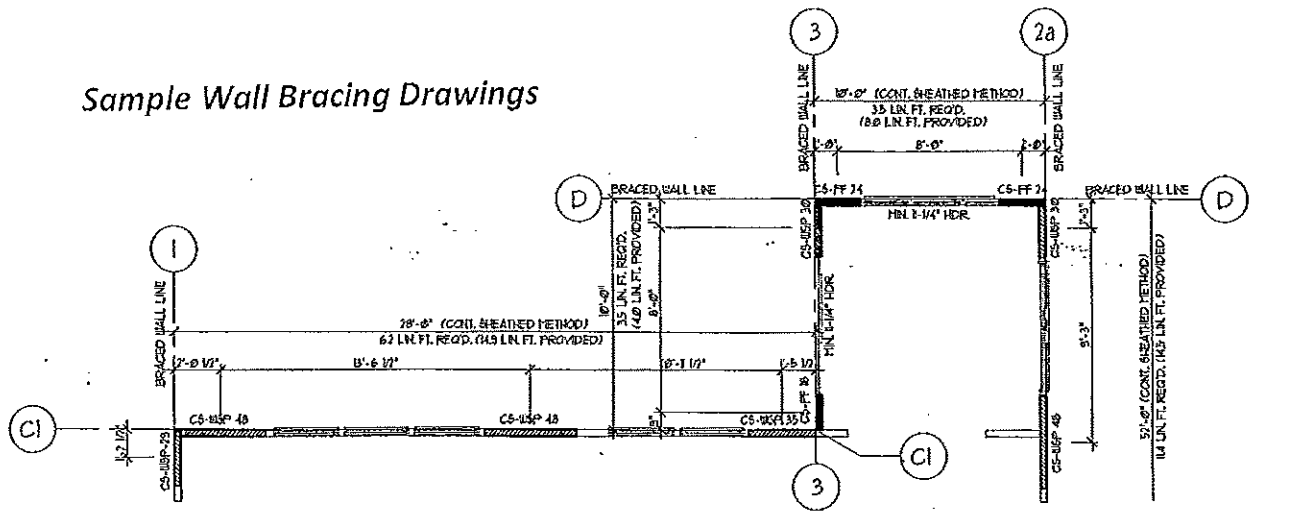


Sample Wall Bracing Drawings

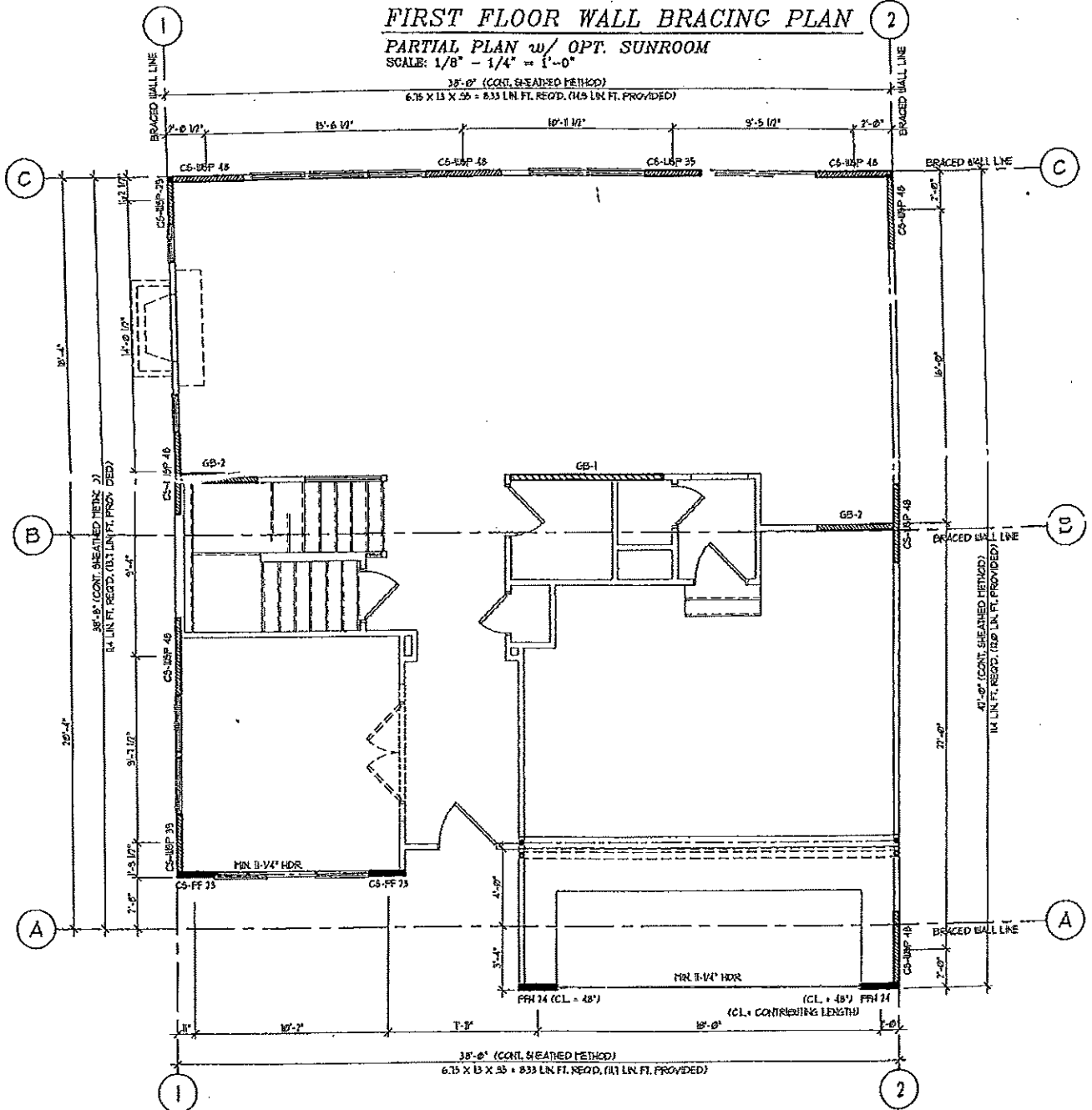


FIRST FLOOR WALL BRACING PLAN

PARTIAL PLAN w/ OPT. SUNROOM

SCALE: 1/8" = 1/4" = 1'-0"

38'-0" (CONT. SHEATHED METHOD)
6.75 X 13 X 55 = 833 LIN. FT. REQ'D. (415 LIN. FT. PROVIDED)



FIRST FLOOR WALL BRACING PLAN

SCALE: 1/8" = 1/4" = 1'-0"