

# Research Report

A publication providing information on Howard County demographics, socioeconomic and employment trends and patterns. **Issue 21, November 2012**

## 2010 CENSUS Race Characteristics

### Introduction

The Department of Planning and Zoning's first Research Report on the 2010 Census, Issue 19, provided a summary of the 2010 Census results for Howard County. In that report, various datasets on population, age, race, housing, household type and relationship information were summarized. *This current report discusses more detailed results on race including regional, state, and national comparisons as well as more detailed comparisons between different locations within the County. Comparisons are also made to 2000 populations.* Note that this current report covers the overall racial composition of the population. Future reports may cover such items as race by age, race by housing, and race by household type and relationship.

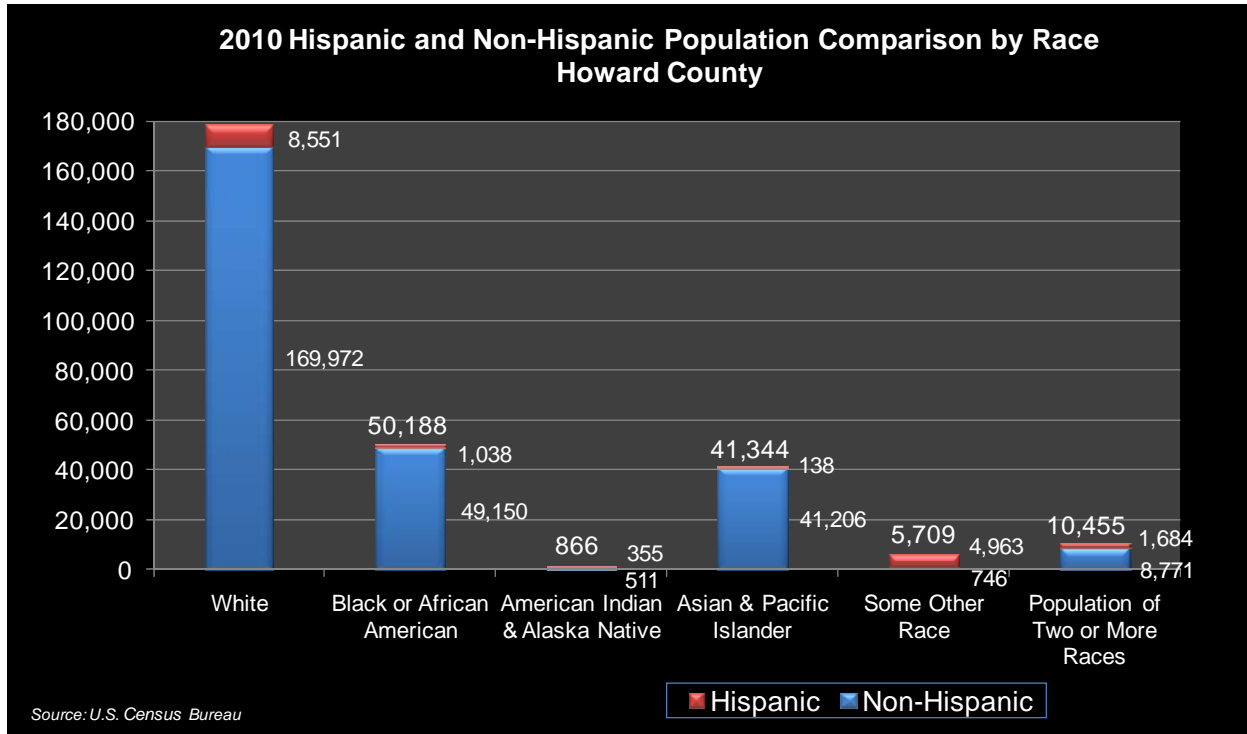
### An Explanation of Race and Hispanic Origin

Explaining the difference between race and Hispanic origin is important when discussing census data. So a definition and explanation of this is provided up front. Note that most all the charts in this document describe race while indicating that Hispanic origin may be of any race. The definition of Hispanics provided by the U.S. Census Bureau for the 2010 census is as follows:

*“Hispanics or Latinos are those people who classified themselves in one of the specific Spanish, Hispanic, or Latino categories listed on the Census 2010 questionnaire – “Mexican,” “Puerto Rican”, or “Cuban” – as well as those who indicate that they are “another Hispanic, Latino, or Spanish origin.” People who do not identify with one of the specific origins listed on the questionnaire but indicate that they are “another Hispanic, Latino, or Spanish origin” are those whose origins are from Spain, the Spanish-speaking countries of Central or South America, or the Dominican Republic. The terms “Hispanic,” “Latino,” and “Spanish” are used interchangeably. Origin can be viewed as the heritage, nationality group, lineage, or country of birth of the person or the person's parents or ancestors before their arrival in the United States. People who identify their origin as Spanish, Hispanic, or Latino may be of any race. Thus, the percent Hispanic should not be added to percentages for racial categories.”<sup>1</sup>*

<sup>1</sup> [http://quickfacts.census.gov/qfd/meta/long\\_RHI805210.htm](http://quickfacts.census.gov/qfd/meta/long_RHI805210.htm)

The chart below depicts this for Howard County. For example, the total White population in 2010 for Howard County is 178,523, which includes 169,972 non-Hispanic Whites and 8,551 Hispanic Whites. Of the total 16,729 Hispanics in Howard County, about half are Whites (8,551), 30% are Some Other Race (4,963) and 10% are Two or More Races (1,684).



## Howard County Compared to Maryland and U.S.

The table and chart below summarize the 2010 population by race and Hispanic origin in Howard County compared to Maryland and the United States.

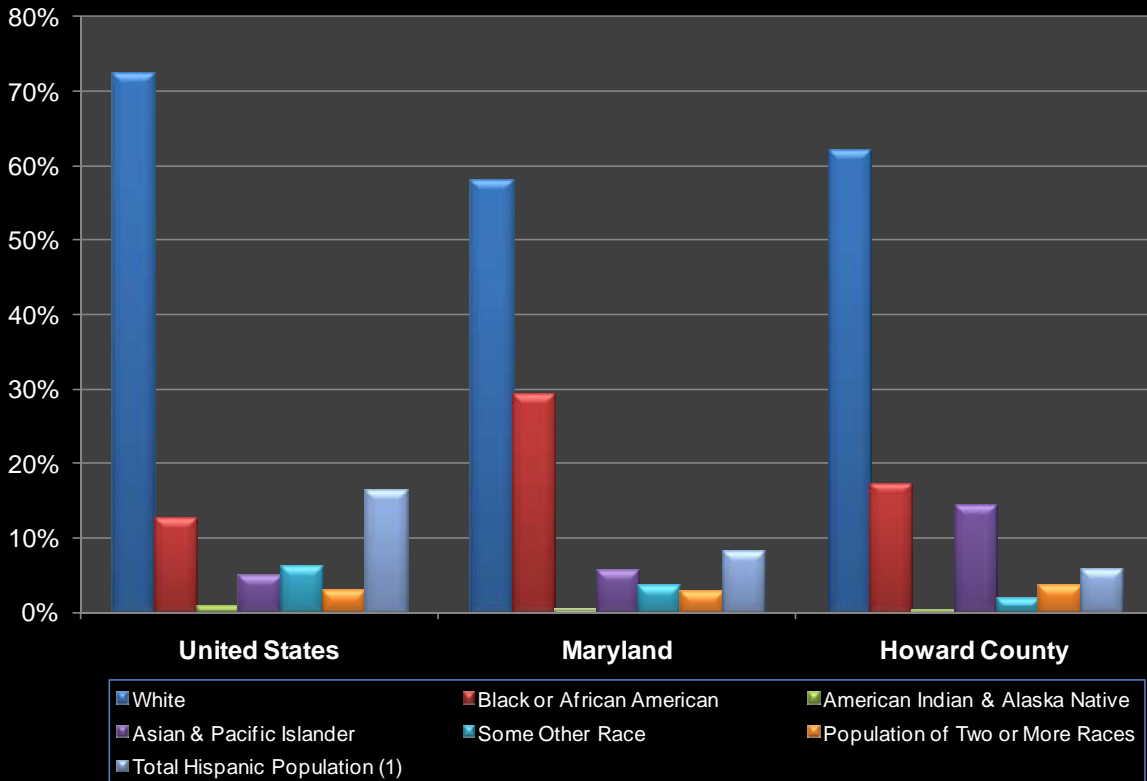
2010 Population by Race - United States, Maryland, & Howard County

	United States		Maryland		Howard County	
	Number	Percent	Number	Percent	Number	Percent
<b>Population by One Race Alone</b>	<b>299,736,465</b>	<b>97.1%</b>	<b>5,608,844</b>	<b>97.1%</b>	<b>276,630</b>	<b>96.4%</b>
White	223,553,265	72.4%	3,359,284	58.2%	178,523	62.2%
Black or African American	38,929,319	12.6%	1,700,298	29.4%	50,188	17.5%
American Indian & Alaska Native	2,932,248	0.9%	20,420	0.4%	866	0.3%
Asian & Pacific Islander	15,214,265	4.9%	322,010	5.6%	41,344	14.4%
Some Other Race	19,107,368	6.2%	206,832	3.6%	5,709	2.0%
<b>Population of Two or More Races</b>	<b>9,009,073</b>	<b>2.9%</b>	<b>164,708</b>	<b>2.9%</b>	<b>10,455</b>	<b>3.6%</b>
<b>TOTAL POPULATION</b>	<b>308,745,538</b>	<b>100%</b>	<b>5,773,552</b>	<b>100%</b>	<b>287,085</b>	<b>100%</b>
<b>Total Hispanic Population (1)</b>	<b>50,477,594</b>	<b>16.3%</b>	<b>470,632</b>	<b>8.2%</b>	<b>16,729</b>	<b>5.8%</b>

(1) Hispanic origin can be from any race.

Source: U.S. Census Bureau

## 2010 Census Percent of Total Population by Race U.S., Maryland, and Howard County



(1) Hispanic can be from any race.  
Source: U.S. Census Bureau

The 2010 population in Howard County was 62.2 percent White. The state of Maryland was 58.2 percent White and the U.S. was 72.4 percent. The Black or African American population represented 17.5 percent of the total Howard County population in 2010, slightly more than the 12.6 percent nationally and less than the 29.4 percent in Maryland. Nationally, the Asian and Pacific Islander population was 4.9 percent of the total in 2010. This compares to 5.6 percent in Maryland and a much higher 14.4 percent in Howard County. Hispanics, which can be of any race, represented 16.3 percent of the total U.S. population in 2010. This compares to only 8.2 percent Hispanic in Maryland and 5.8 percent in Howard County. Since the 2000 Census, residents have been able to indicate that they were of more than one race. In 2010 nationally, 2.9 percent of the population indicated that they were of more than one race compared to 3.6 percent in Howard County and 2.9 percent in Maryland.

Looking back a decade at the 2000 census results, it is clear that the national, state and Howard County populations have become increasingly diverse with growing shares of minority residents. The first table below shows the populations by race and Hispanic origin in 2000. The second table shows the *percentage growth* in population by race and Hispanic origin over the last decade from 2000 to 2010. The third table shows the *percent of the total growth* over the decade for each category.

**2000 Population by Race - United States, Maryland, & Howard County**

	United States		Maryland		Howard County	
	Number	Percent	Number	Percent	Number	Percent
<b>Population by One Race Alone</b>	<b>274,595,678</b>	<b>97.6%</b>	<b>5,192,899</b>	<b>98.0%</b>	<b>242,407</b>	<b>97.8%</b>
White	211,460,626	75.1%	3,391,308	64.0%	184,215	74.3%
Black or African American	34,658,190	12.3%	1,477,411	27.9%	35,730	14.4%
American Indian & Alaska Native	2,475,956	0.9%	15,423	0.3%	583	0.2%
Asian & Pacific Islander	10,641,833	3.8%	213,232	4.0%	19,124	7.7%
Some Other Race	15,359,073	5.5%	95,525	1.8%	2,755	1.1%
<b>Population of Two or More Races</b>	<b>6,826,228</b>	<b>2.4%</b>	<b>103,587</b>	<b>2.0%</b>	<b>5,435</b>	<b>2.2%</b>
<b>TOTAL POPULATION</b>	<b>281,421,906</b>	<b>100%</b>	<b>5,296,486</b>	<b>100%</b>	<b>247,842</b>	<b>100%</b>
<b>Total Hispanic Population (1)</b>	<b>35,305,818</b>	<b>12.5%</b>	<b>227,916</b>	<b>4.3%</b>	<b>7,490</b>	<b>3.0%</b>

(1) Hispanic origin can be from any race.

Source: U.S. Census Bureau

**2000 to 2010 Population Growth by Race - United States, Maryland, & Howard County  
(Showing Percentage Growth)**

	United States		Maryland		Howard County	
	Increase	% Growth	Increase	% Growth	Increase	% Growth
<b>Population by One Race Alone</b>	<b>25,140,787</b>	<b>9.2%</b>	<b>415,945</b>	<b>8.0%</b>	<b>34,223</b>	<b>14.1%</b>
White	12,092,639	5.7%	(32,024)	-0.9%	(5,692)	-3.1%
Black or African American	4,271,129	12.3%	222,887	15.1%	14,458	40.5%
American Indian & Alaska Native	456,292	18.4%	4,997	32.4%	283	48.5%
Asian & Pacific Islander	4,572,432	43.0%	108,778	51.0%	22,220	116.2%
Some Other Race	3,748,295	24.4%	111,307	116.5%	2,954	107.2%
<b>Population of Two or More Races</b>	<b>2,182,845</b>	<b>32.0%</b>	<b>61,121</b>	<b>59.0%</b>	<b>5,020</b>	<b>92.4%</b>
<b>TOTAL POPULATION</b>	<b>27,323,632</b>	<b>9.7%</b>	<b>477,066</b>	<b>9.0%</b>	<b>39,243</b>	<b>15.8%</b>
<b>Total Hispanic Population (1)</b>	<b>15,171,776</b>	<b>43.0%</b>	<b>242,716</b>	<b>106.5%</b>	<b>9,239</b>	<b>123.4%</b>

(1) Hispanic origin can be from any race.

Source: U.S. Census Bureau

**2000 to 2010 Population Growth by Race - United States, Maryland, & Howard County  
(Showing Percent of Total Growth)**

	United States		Maryland		Howard County	
	Number	Percent	Number	Percent	Number	Percent
<b>Population by One Race Alone</b>	<b>25,140,787</b>	<b>92.0%</b>	<b>415,945</b>	<b>87.2%</b>	<b>34,223</b>	<b>87.2%</b>
White	12,092,639	44.3%	(32,024)	-6.7%	(5,692)	-14.5%
Black or African American	4,271,129	15.6%	222,887	46.7%	14,458	36.8%
American Indian & Alaska Native	456,292	1.7%	4,997	1.0%	283	0.7%
Asian & Pacific Islander	4,572,432	16.7%	108,778	22.8%	22,220	56.6%
Some Other Race	3,748,295	13.7%	111,307	23.3%	2,954	7.5%
<b>Population of Two or More Races</b>	<b>2,182,845</b>	<b>8.0%</b>	<b>61,121</b>	<b>12.8%</b>	<b>5,020</b>	<b>12.8%</b>
<b>TOTAL POPULATION</b>	<b>27,323,632</b>	<b>100.0%</b>	<b>477,066</b>	<b>100.0%</b>	<b>39,243</b>	<b>100.0%</b>
<b>Total Hispanic Population (1)</b>	<b>15,171,776</b>	<b>55.5%</b>	<b>242,716</b>	<b>50.9%</b>	<b>9,239</b>	<b>23.5%</b>

(1) Hispanic origin can be from any race.

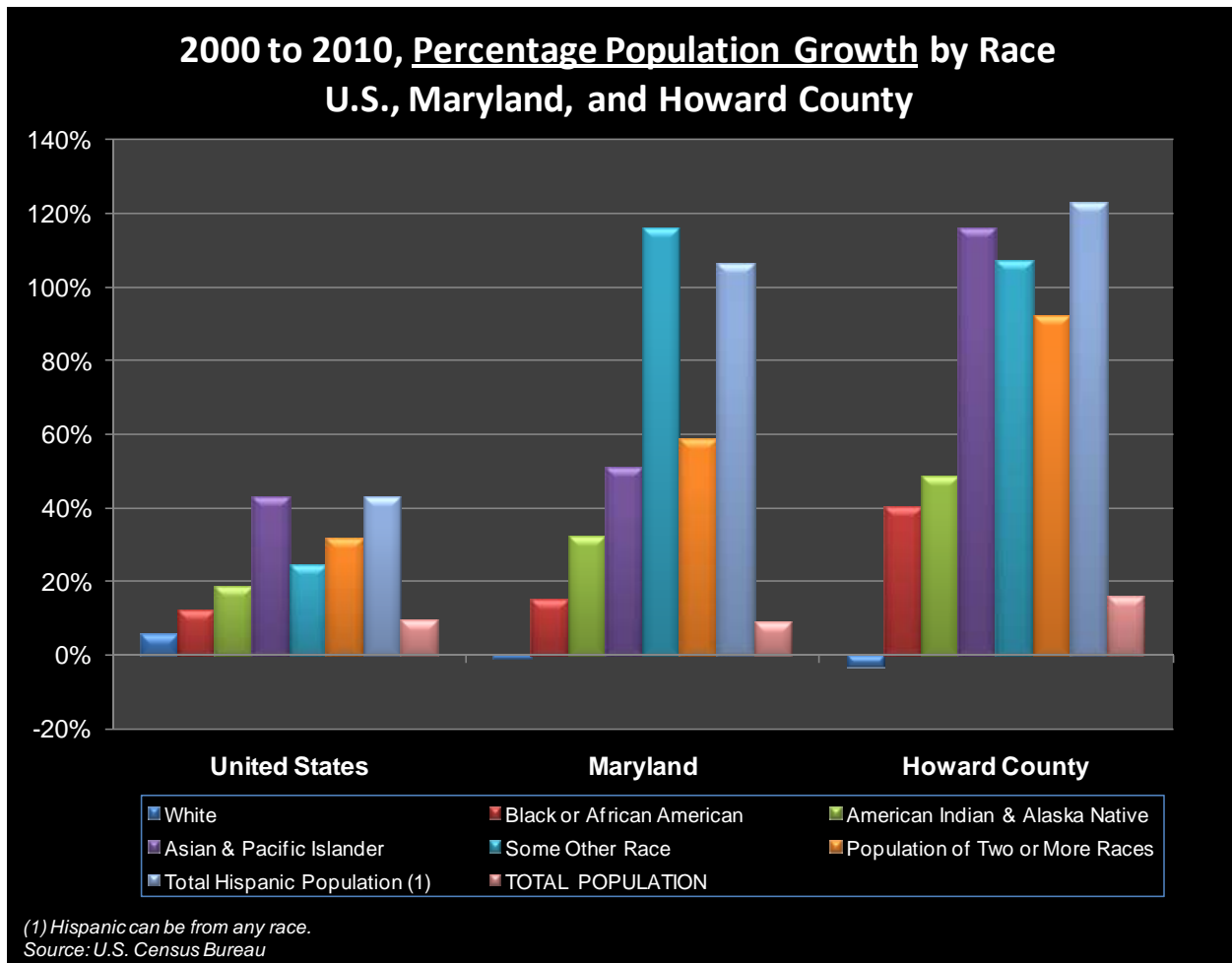
Source: U.S. Census Bureau

The total U.S. population grew by 27.3 million from 2000 to 2010, a 9.7 percent increase. This compares to a 9.0 percent population increase in Maryland and a much greater 15.8 percent increase in Howard County.

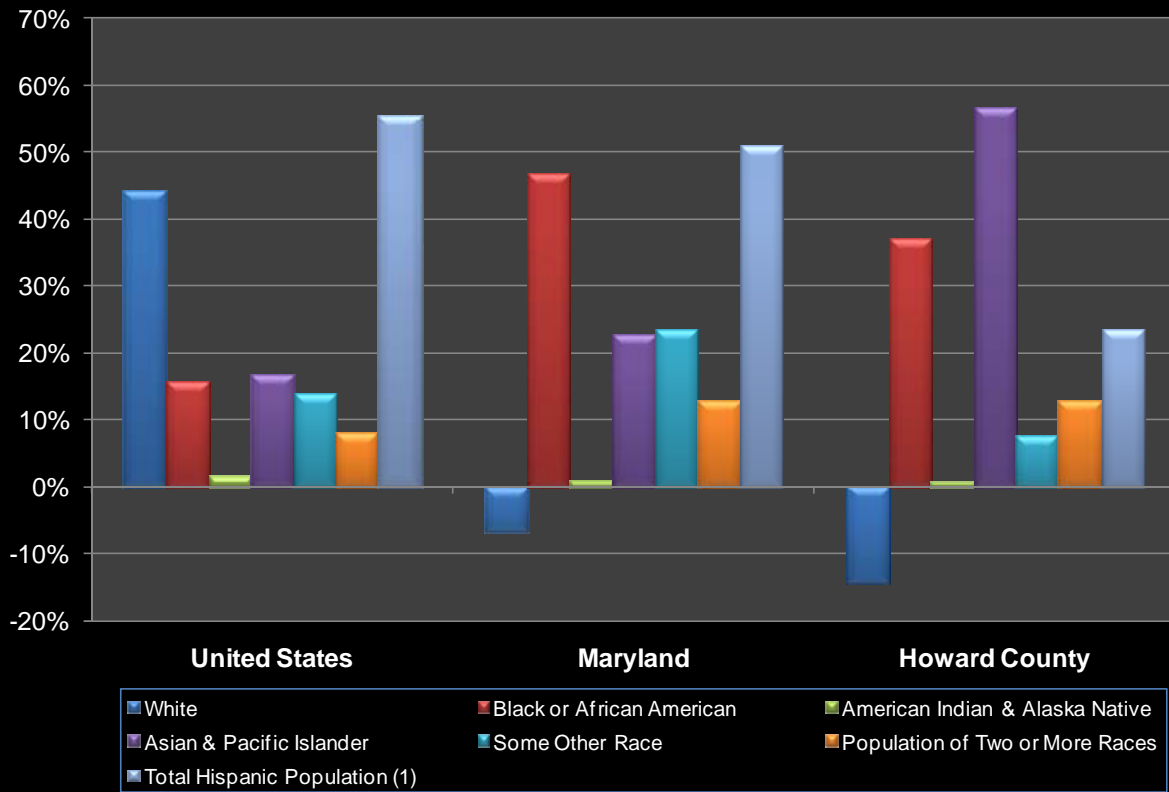
It is clear that the minority populations have increased significantly over the last decade. Population diversity increased the most in Howard County, followed by Maryland and then the U.S. as a whole. The growth tables are shown graphically in the charts below. The first chart depicts the *percentage growth* rates by race and Hispanic origin over the ten year period. The second chart shows the *percent of the total growth* by race and Hispanic origin over ten years.

Close to 56 percent of the total national population increase over the decade, about 15.2 million of the total 27.3 million, were residents of Hispanic origin. This is a 43 percent increase, from 35.2 million Hispanics in 2000 to 50.5 million by 2010. The ten year percentage growth rates of Hispanics in Maryland and Howard County were even higher at 106.3 percent and 123.4 percent, respectively. The growth rates of Asian and Pacific Islander residents were also significant, with the greatest growth rate in Howard County followed by Maryland and then the U.S.

The White population (which includes Hispanics like all the other race categories) actually declined in Howard County and Maryland by 3.1 and 0.9 percent, respectively. However, the White population increased by 5.7 percent over this time period for the U.S. as a whole. This again shows the relatively greater increase in diversity in Howard County and Maryland compared to the U.S.



## 2000 to 2010, Percent of Total Population Growth by Race U.S., Maryland, and Howard County



(1) Hispanic can be from any race.  
Source: U.S. Census Bureau

In absolute numbers, the White population increased by 12.1 million residents in the U.S. from 2000 to 2010, 44.3 percent of the total population increase. In Maryland, the White population *decreased* by 32,024 residents over the decade and in Howard County the White population *decreased* by 5,692. This is another viewpoint showing the increasing population diversity in Maryland and Howard County compared to the U.S. as a whole.

### Intra-State and Regional Comparisons

The table below summarizes the population breakdown by race and Hispanic origin for Maryland counties and Baltimore City ranked from the most populous jurisdiction to the least populous. Howard County is the sixth most populous jurisdiction in the state. The charts further below summarize these results graphically for the nine largest jurisdictions, which include all of the counties in the Baltimore Metropolitan Area as well as Baltimore City.

2010 Population by Race and Hispanic Origin by Maryland Jurisdiction

Maryland Jurisdiction	White	Black or African American	American Indian & Alaska Native	Asian & Pacific Islander	Some Other Race	Population of Two or More Races	TOTAL POPULATION	Hispanic Population (1)
Montgomery	558,358	167,315	3,639	135,973	67,847	38,645	971,777	165,398
Prince George's	166,059	556,620	4,258	35,713	73,441	27,329	863,420	128,972
Baltimore County	520,185	209,738	2,625	40,396	12,801	19,284	805,029	33,735
Baltimore City	183,830	395,781	2,270	14,822	11,303	12,955	620,961	25,960
Anne Arundel	405,456	83,484	1,665	18,836	12,642	15,573	537,656	32,902
<b>Howard</b>	<b>178,523</b>	<b>50,188</b>	<b>866</b>	<b>41,344</b>	<b>5,709</b>	<b>10,455</b>	<b>287,085</b>	<b>16,729</b>
Harford	198,763	31,058	614	6,025	2,318	6,048	244,826	8,613
Frederick	190,306	20,148	730	9,053	6,684	6,464	233,385	17,135
Carroll	155,282	5,332	328	2,474	1,199	2,519	167,134	4,363
Washington	125,447	14,133	314	2,122	1,626	3,788	147,430	5,104
Charles	73,677	60,031	957	4,469	1,963	5,454	146,551	6,259
St. Mary's	82,636	15,030	424	2,669	1,054	3,338	105,151	3,972
Cecil	90,189	6,284	294	1,145	1,019	2,177	101,108	3,407
Wicomico	67,784	23,873	236	2,518	1,872	2,450	98,733	4,478
Calvert	72,231	11,930	329	1,304	578	2,365	88,737	2,437
Allegany	66,981	6,028	107	599	186	1,186	75,087	1,085
Worcester	42,194	7,022	145	584	632	877	51,454	1,622
Queen Anne's	42,397	3,298	149	481	651	822	47,798	1,452
Talbot	30,746	4,829	65	494	1,030	618	37,782	2,073
Caroline	26,396	4,585	123	241	1,011	710	33,066	1,816
Dorchester	22,065	9,042	112	310	463	626	32,618	1,130
Garrett	29,440	301	43	76	39	198	30,097	220
Somerset	14,170	11,192	85	191	371	461	26,470	863
Kent	16,169	3,056	42	171	393	366	20,197	907
<b>Total</b>	<b>3,359,284</b>	<b>1,700,298</b>	<b>20,420</b>	<b>322,010</b>	<b>206,832</b>	<b>164,708</b>	<b>5,773,552</b>	<b>470,632</b>

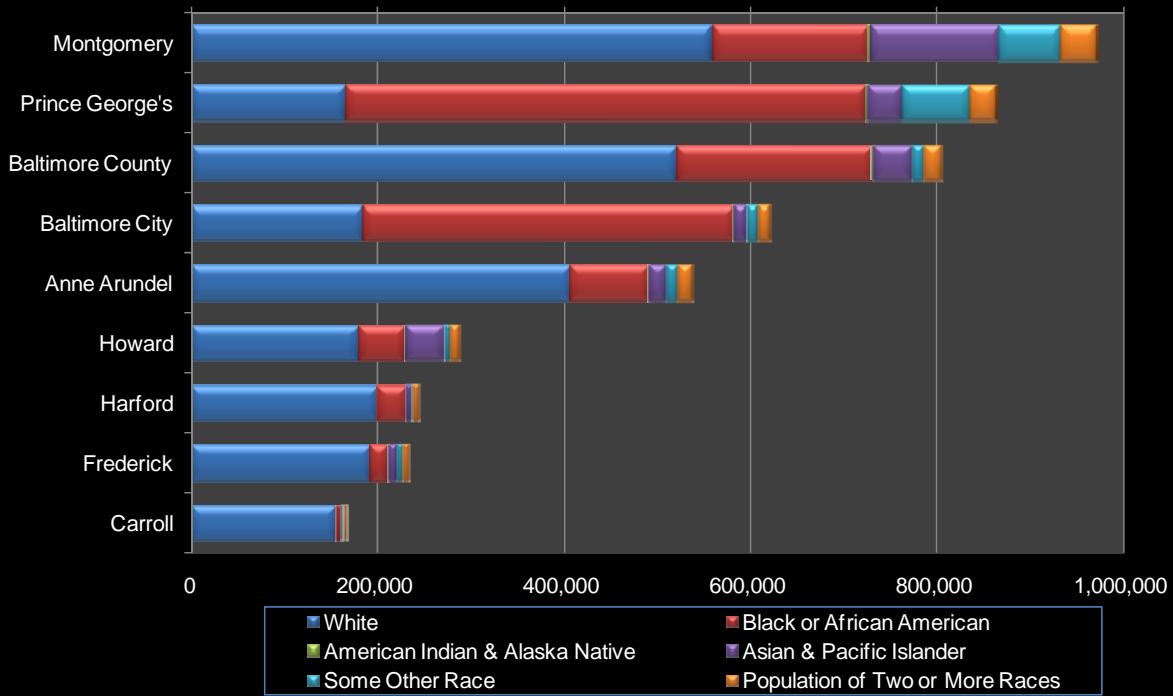
(1) Hispanic origin can be from any race.

Source: U.S. Census Bureau

Montgomery, Baltimore and Anne Arundel counties – the first, third and fifth most populous jurisdictions in the state, respectively – have the largest White populations. Montgomery County also has by far the largest Asian and Pacific Islander population with more than three times the number in Howard County, which has the second largest. It is interesting to note, however, that Howard County has the great percentage of Asian and Pacific Islanders of total county population (14.4 percent) followed closely by Montgomery County (14 percent) in 2010. Prince George's County and Baltimore City – the second and fourth most populous jurisdictions in the state, respectively – have the largest Black or African American populations.

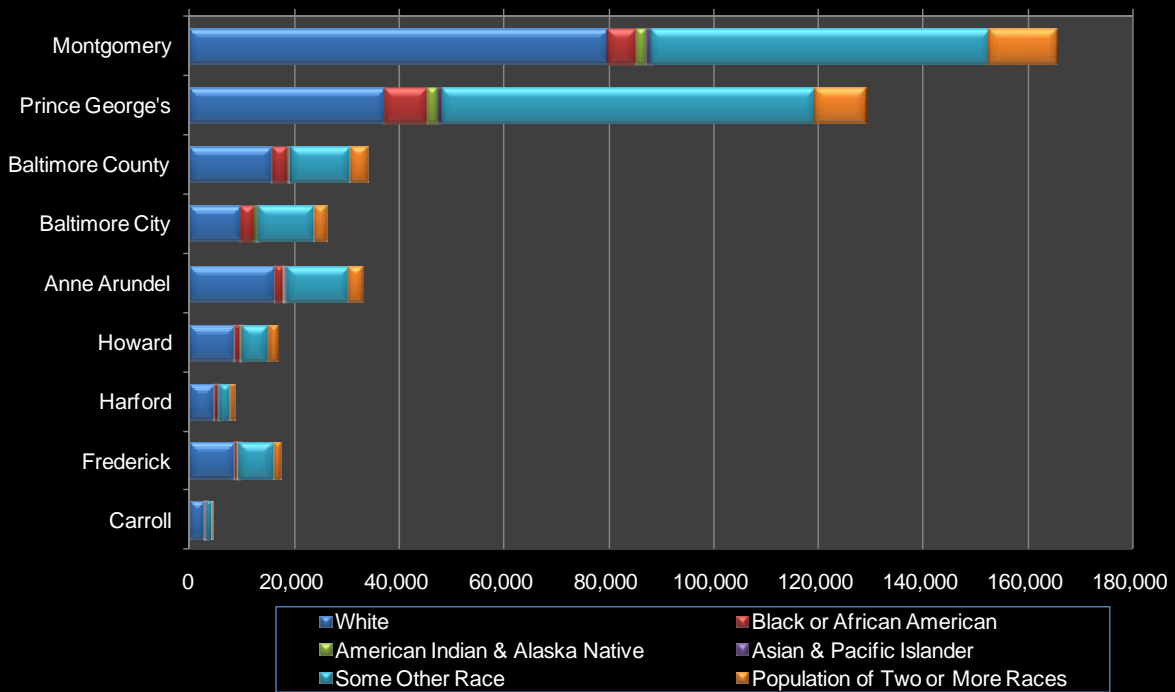
Montgomery and Prince George's counties have the largest multiracial populations (Two or More Races). These two counties also have the largest populations who chose the Some Other Race category. The Census Bureau notes that a significant number residents who chose Some Other Race are of Hispanic origin, which is further summarized in the second chart below. Close to 43 percent of residents of Hispanic origin are of Some Other Race. About 41 percent are White. About 8 percent are multiracial and 5 percent Black or African American.

## 2010 Total Population by Race in Baltimore Region



Source: U.S. Census Bureau, (1) Hispanics can be from any race.

## 2010 Hispanic Population by Race in Baltimore Region

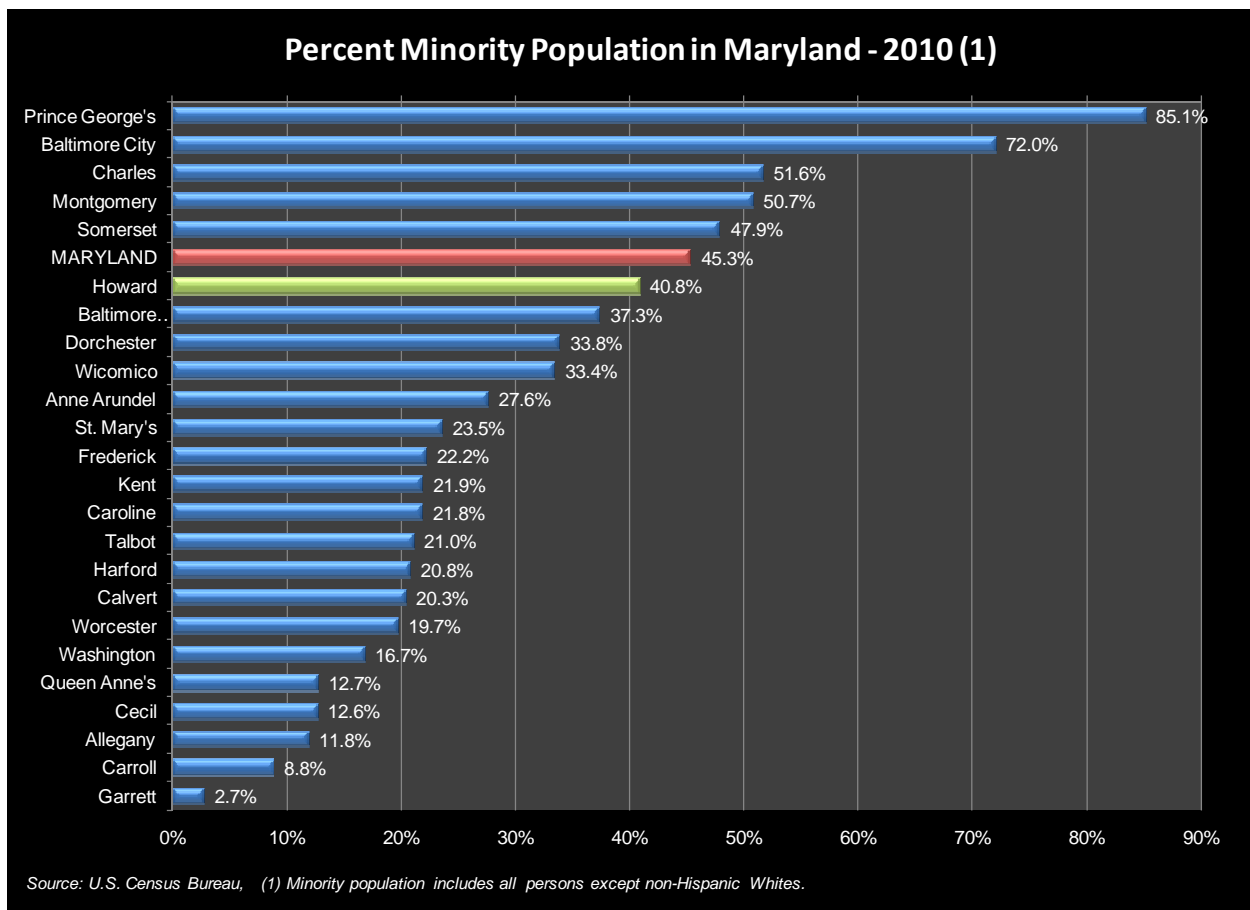


Source: U.S. Census Bureau, (1) Hispanics can be from any race.

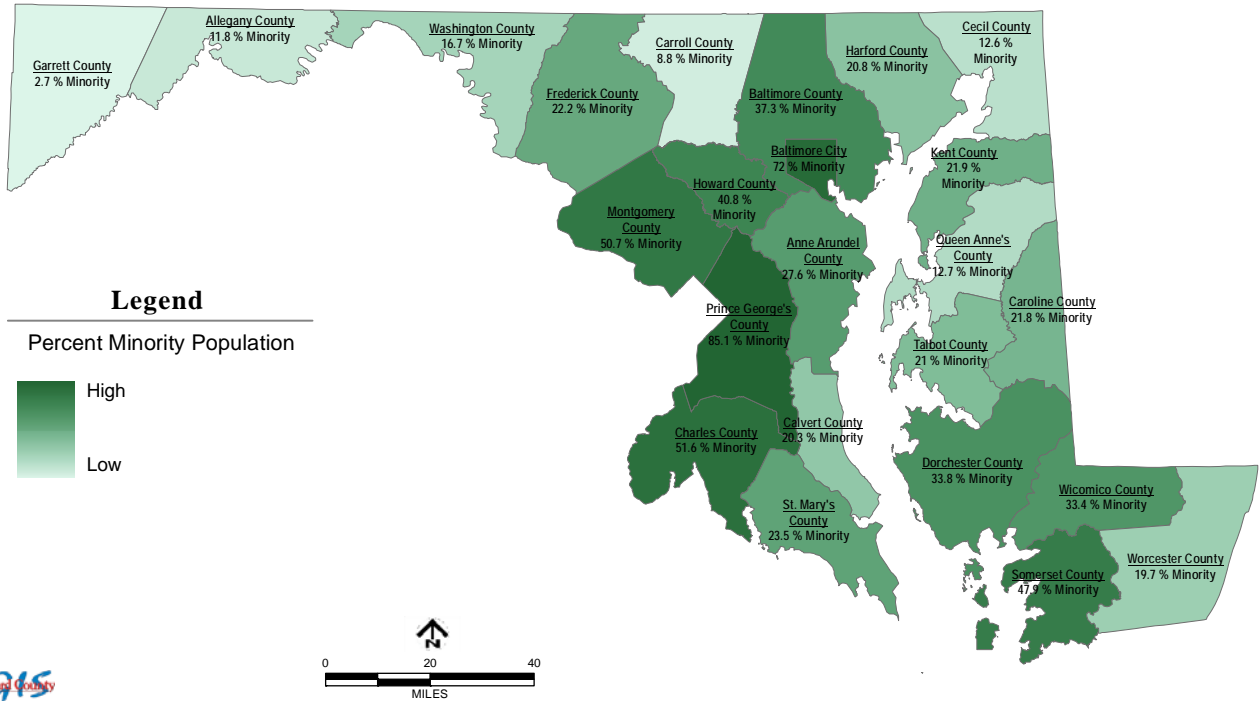


It is clear from the chart above that Montgomery County has the greatest Hispanic population. Most are White Hispanics or of Some Other Race. Prince George’s County has the second greatest number of Hispanics. Montgomery and Prince George’s counties combined made up 62.5 percent of all Hispanics in the state in 2010. Howard County, by comparison, had 3.6 percent of all Hispanics living in the state in 2010.

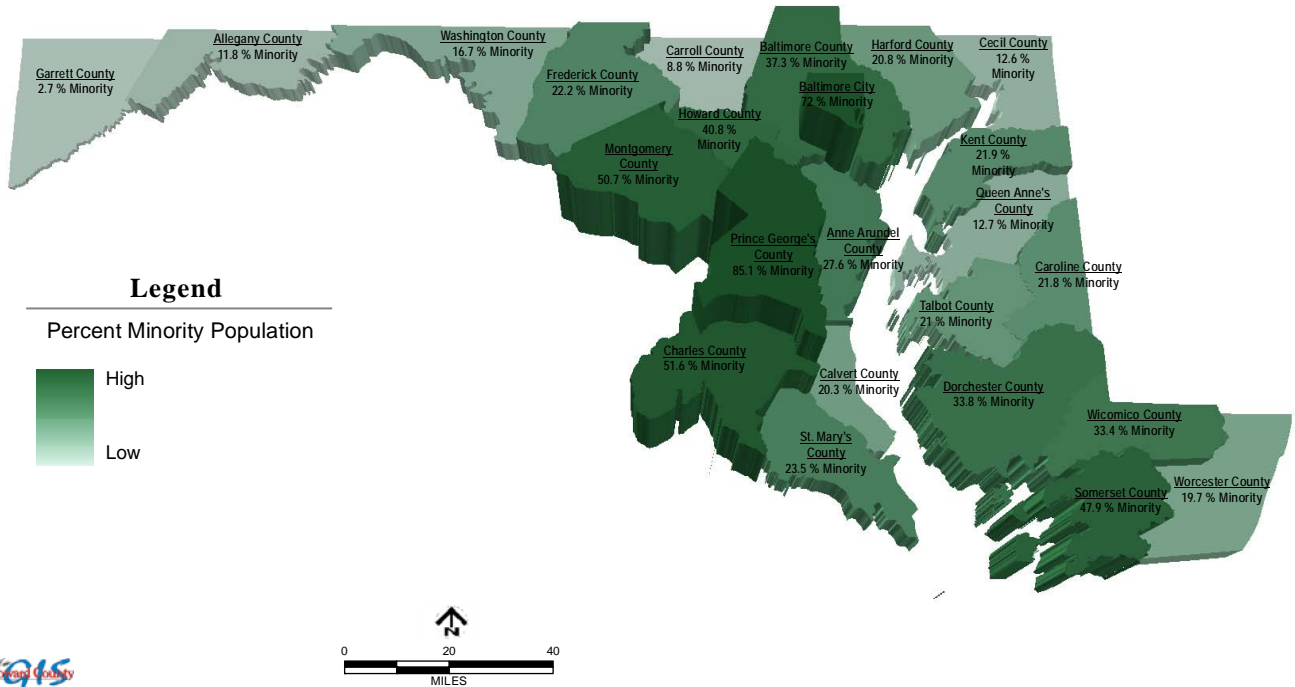
As indicated in the chart and maps below, which shows the percent minority population for each jurisdiction, three of the four most populous jurisdictions in the state also have the greatest minority populations. These are Prince George’s County, Baltimore City, and Montgomery County, where the percent minority populations were 85.1, 72.0 and 50.6 percent, respectively, in 2010. Minority populations are defined as all persons except non-Hispanic Whites. Statewide, minorities consisted of 45.3 percent of the total 2010 population. The three jurisdictions mentioned above, in addition to Charles County and Somerset County, all have minority percentages greater than the statewide percentage. In 2010, the minority population in Howard County was 40.8 percent, the sixth greatest in the state. (The two maps are the same with one being a 3D version with the larger extrusions representing larger percent minority populations.)



## Percent Minority Population by Maryland Jurisdiction in 2010



## Percent Minority Population by Maryland Jurisdiction in 2010



## Comparisons Within Howard County – Year 2010

The tables below summarize the 2010 population by race in Howard County by Regional Planning District (RPD). The first table indicates the populations and the next two tables show the percentage breakdowns. (Refer to the maps beginning on Page 14 to see a delineation of the Regional Planning Districts.)

Howard County Population by Race by Regional Planning District - 2010

	West							TOTAL
	Elkridge	Ellicott City	Friendship	Cooksville	Clarksville	Columbia	Laurel	
<b>Population by One Race Alone</b>	<b>38,693</b>	<b>60,887</b>	<b>15,441</b>	<b>13,609</b>	<b>17,076</b>	<b>94,695</b>	<b>36,229</b>	<b>276,630</b>
White	25,911	40,303	12,007	12,132	13,203	55,210	19,757	178,523
Black or African American	6,531	5,673	941	649	1,162	24,931	10,301	50,188
American Indian & Alaska Native	105	137	24	22	47	391	140	866
Asian & Pacific Islander	5,492	14,046	2,384	685	2,531	11,355	4,851	41,344
Some Other Race	654	728	85	121	133	2,808	1,180	5,709
<b>Population of Two of More Races</b>	<b>1,449</b>	<b>1,810</b>	<b>345</b>	<b>290</b>	<b>526</b>	<b>4,390</b>	<b>1,645</b>	<b>10,455</b>
<b>TOTAL POPULATION</b>	<b>40,142</b>	<b>62,697</b>	<b>15,786</b>	<b>13,899</b>	<b>17,602</b>	<b>99,085</b>	<b>37,874</b>	<b>287,085</b>
<b>Total Hispanic Population (1)</b>	<b>2,074</b>	<b>2,290</b>	<b>325</b>	<b>446</b>	<b>531</b>	<b>7,852</b>	<b>3,211</b>	<b>16,729</b>

(1) Hispanic origin can be from any race.

Source: U.S. Census Bureau

Howard County Percent Share of Population by Race by Regional Planning District - 2010  
(as percent of total race category)

	West							TOTAL
	Elkridge	Ellicott City	Friendship	Cooksville	Clarksville	Columbia	Laurel	
<b>Population by One Race Alone</b>	<b>14.0%</b>	<b>22.0%</b>	<b>5.6%</b>	<b>4.9%</b>	<b>6.2%</b>	<b>34.2%</b>	<b>13.1%</b>	<b>100%</b>
White	14.5%	22.6%	6.7%	6.8%	7.4%	30.9%	11.1%	100%
Black or African American	13.0%	11.3%	1.9%	1.3%	2.3%	49.7%	20.5%	100%
American Indian & Alaska Native	12.1%	15.8%	2.8%	2.5%	5.4%	45.2%	16.2%	100%
Asian & Pacific Islander	13.3%	34.0%	5.8%	1.7%	6.1%	27.5%	11.7%	100%
Some Other Race	11.5%	12.8%	1.5%	2.1%	2.3%	49.2%	20.7%	100%
<b>Population of Two of More Races</b>	<b>13.9%</b>	<b>17.3%</b>	<b>3.3%</b>	<b>2.8%</b>	<b>5.0%</b>	<b>42.0%</b>	<b>15.7%</b>	<b>100%</b>
<b>TOTAL POPULATION</b>	<b>14.0%</b>	<b>21.8%</b>	<b>5.5%</b>	<b>4.8%</b>	<b>6.1%</b>	<b>34.5%</b>	<b>13.2%</b>	<b>100%</b>
<b>Total Hispanic Population (1)</b>	<b>12.4%</b>	<b>13.7%</b>	<b>1.9%</b>	<b>2.7%</b>	<b>3.2%</b>	<b>46.9%</b>	<b>19.2%</b>	<b>100%</b>

(1) Hispanic origin can be from any race.

Source: U.S. Census Bureau

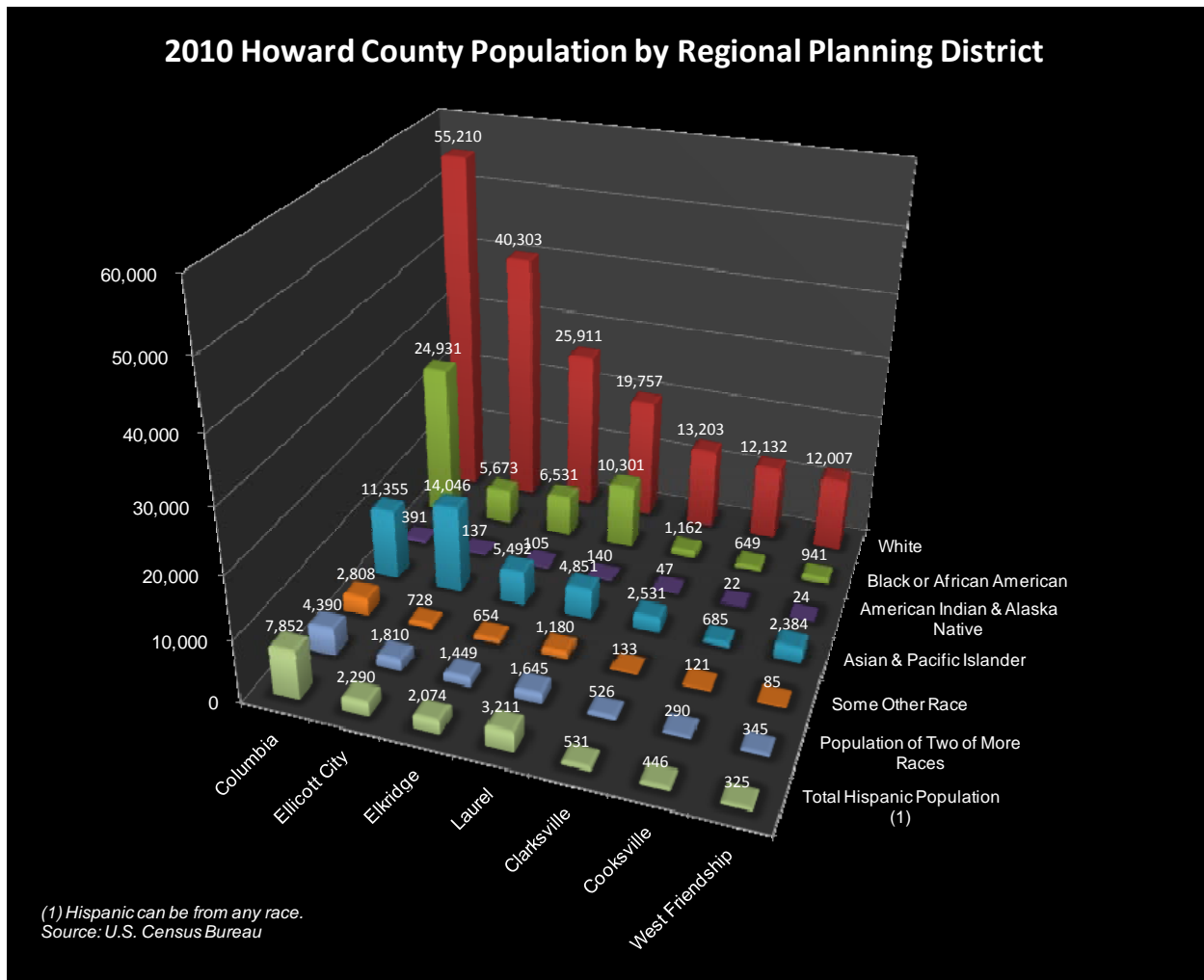
Howard County Percent Share of Population by Race by Regional Planning District - 2010  
(as percent of total Regional Planning District)

	West							TOTAL
	Elkridge	Ellicott City	Friendship	Cooksville	Clarksville	Columbia	Laurel	
<b>Population by One Race Alone</b>	<b>96.4%</b>	<b>97.1%</b>	<b>97.8%</b>	<b>97.9%</b>	<b>97.0%</b>	<b>95.6%</b>	<b>95.7%</b>	<b>96.4%</b>
White	64.5%	64.3%	76.1%	87.3%	75.0%	55.7%	52.2%	62.2%
Black or African American	16.3%	9.0%	6.0%	4.7%	6.6%	25.2%	27.2%	17.5%
American Indian & Alaska Native	0.3%	0.2%	0.2%	0.2%	0.3%	0.4%	0.4%	0.3%
Asian & Pacific Islander	13.7%	22.4%	15.1%	4.9%	14.4%	11.5%	12.8%	14.4%
Some Other Race	1.6%	1.2%	0.5%	0.9%	0.8%	2.8%	3.1%	2.0%
<b>Population of Two of More Races</b>	<b>3.6%</b>	<b>2.9%</b>	<b>2.2%</b>	<b>2.1%</b>	<b>3.0%</b>	<b>4.4%</b>	<b>4.3%</b>	<b>3.6%</b>
<b>TOTAL POPULATION</b>	<b>100.0%</b>	<b>100.0%</b>	<b>100.0%</b>	<b>100.0%</b>	<b>100.0%</b>	<b>100.0%</b>	<b>100.0%</b>	<b>100.0%</b>
<b>Total Hispanic Population (1)</b>	<b>5.2%</b>	<b>3.7%</b>	<b>2.1%</b>	<b>3.2%</b>	<b>3.0%</b>	<b>7.9%</b>	<b>8.5%</b>	<b>5.8%</b>

(1) Hispanic origin can be from any race.

Source: U.S. Census Bureau

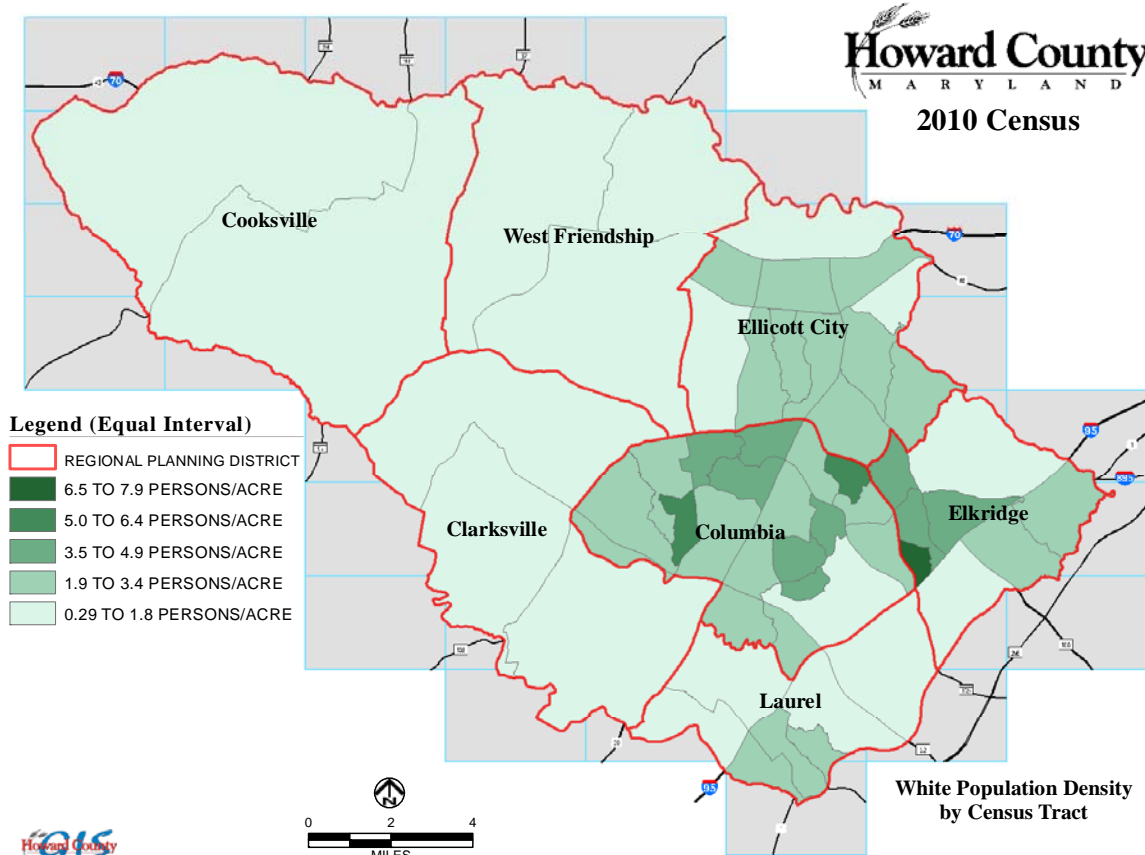
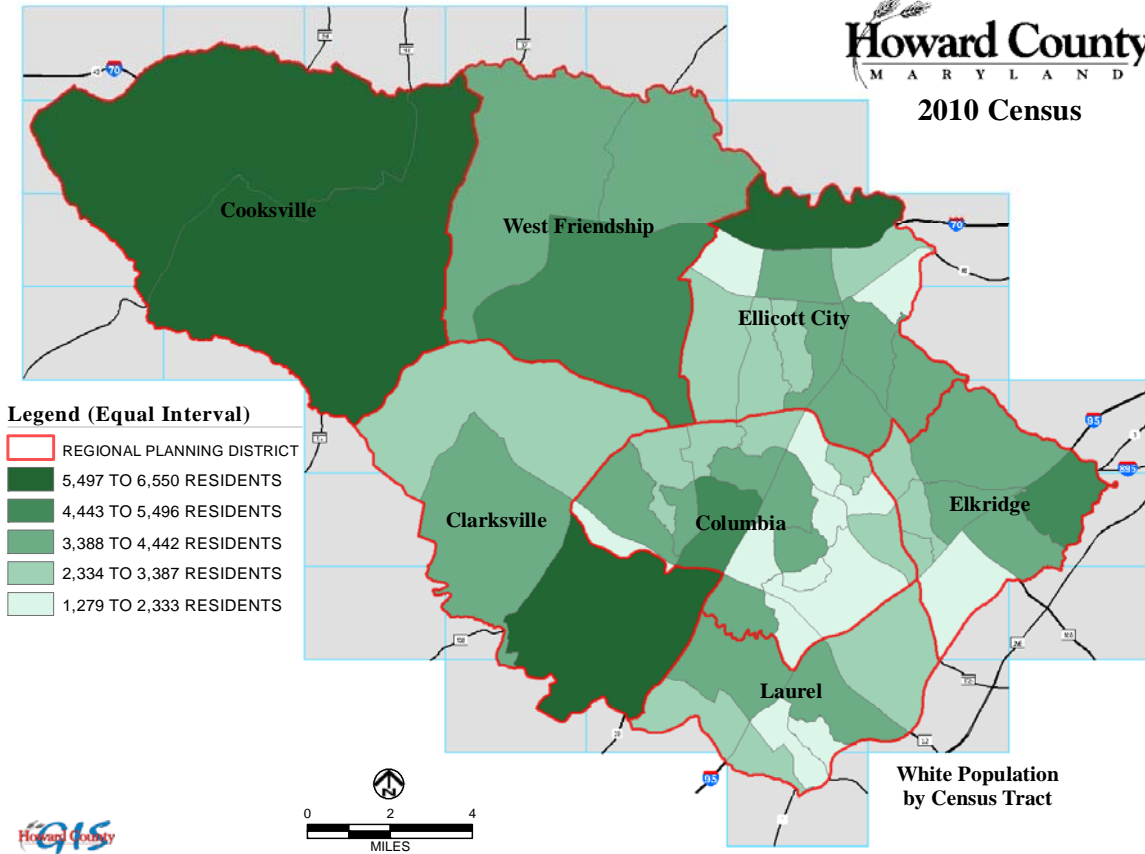
The chart below shows the population by race for each RPD graphically. Columbia, which has the greatest overall population, also has the greatest population for each race category. Ellicott City has the second largest White population. Ellicott City also has the second largest Asian and Pacific Islander population. Laurel has the second largest Black or African American population after Columbia, followed by Elkridge and then Ellicott City. Almost half of all Hispanics in Howard County live in Columbia as well as do 42 percent of all residents who chose Two or More Races.

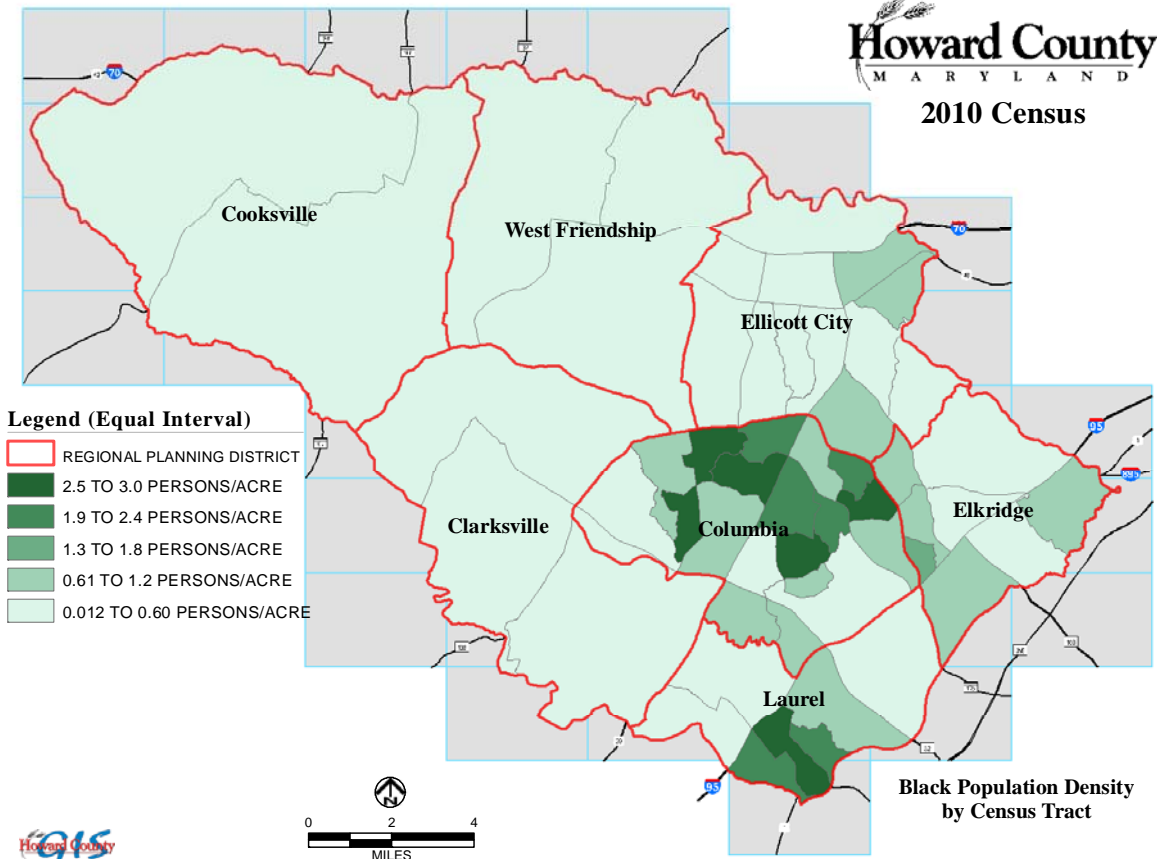
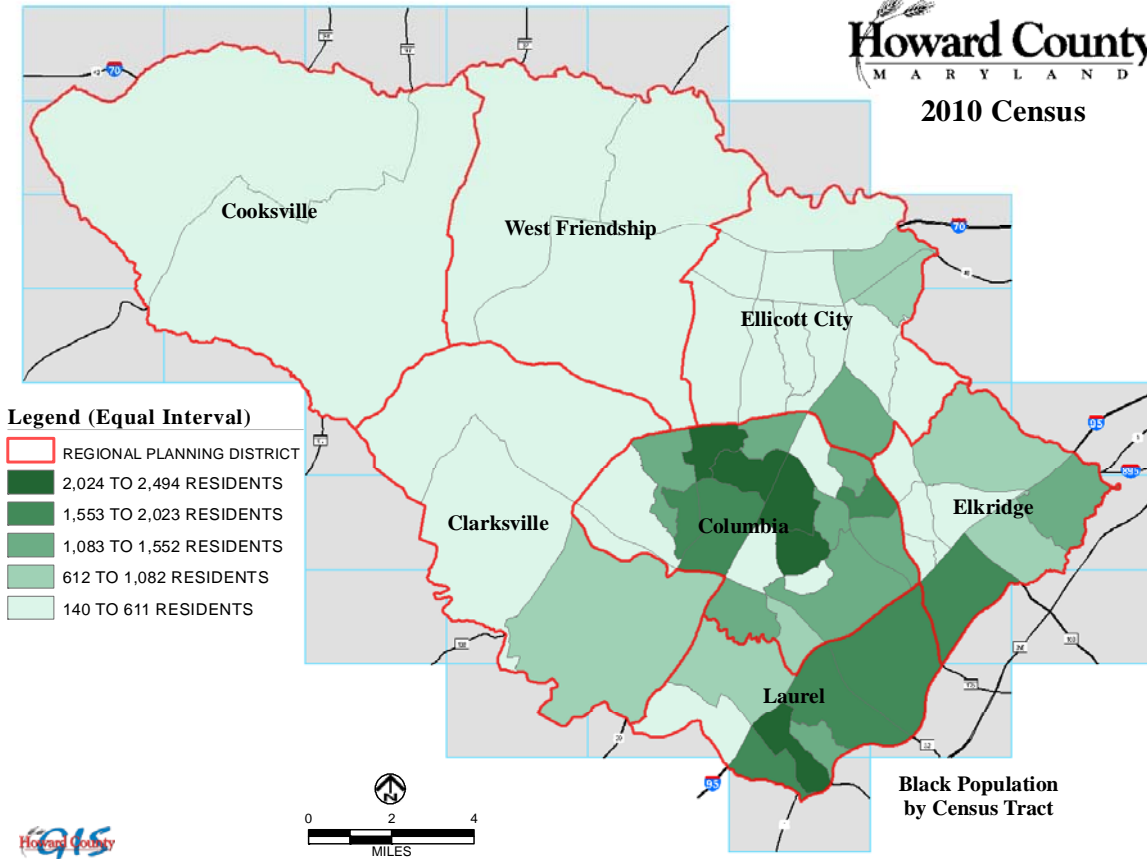


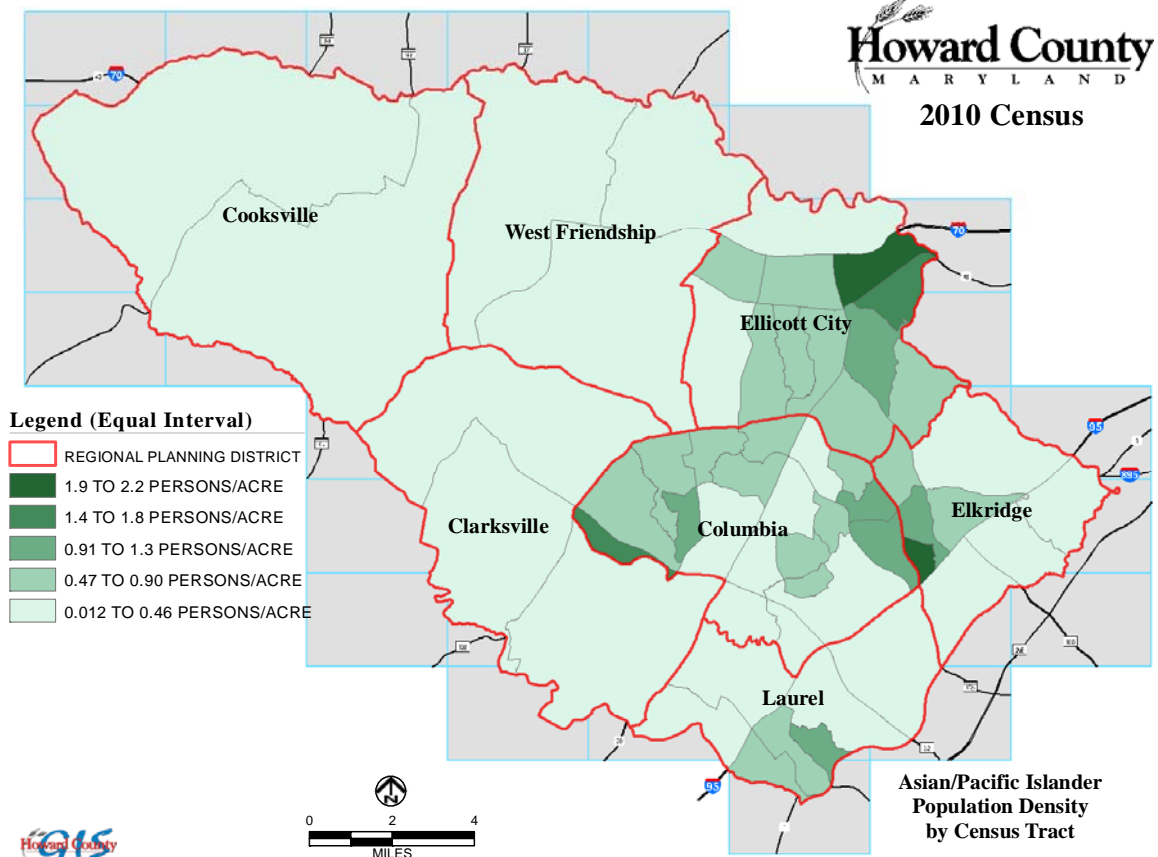
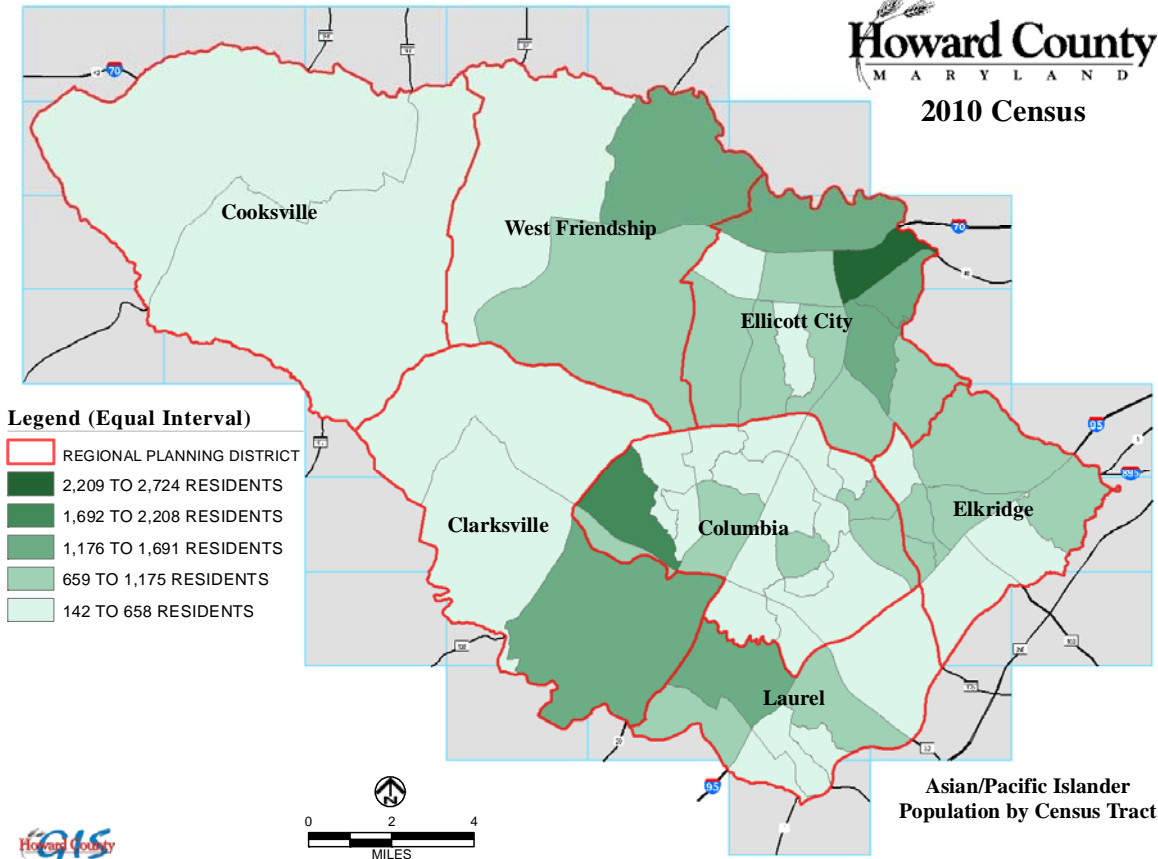
The series of maps on the following pages show a more detailed breakdown of the 2010 population in Howard County at the census tract level. The first pair of maps show the total population of all races – the darker the shade the greater the number. The subsequent pairs of maps show the populations by individual race. For each pair, the first map displays the total populations and the second map shows the *population densities*. The density maps better show the population concentrations by normalizing the results given that census tracts vary in acreage. The following summarizes some of the major findings:

- The most densely populated areas of Howard County are in the east within areas of Columbia, Ellicott City, Elkridge and Laurel. Columbia, in particular, has the greatest number of higher density census tracts.
- In terms of absolute numbers, White residents make up most of the western population. The most dense White populations, however, are located in Columbia, Ellicott City and parts of Laurel and Elkridge. One census tract in Elkridge has the greatest White population density of between about 6.5 and 7.9 persons per acre.
- The majority of African Americans live in parts of Columbia, Elkridge and Laurel. The densest concentration of African Americans are located in five census tracts in Columbia and one census tract in Laurel with between about 2.5 and 3.0 persons per acre.
- Compared to other minorities, Asians and Pacific Islanders, although relatively smaller in numbers, are more dispersed throughout the County. They are primarily concentrated, however, in Ellicott City, and parts of Columbia, the Laurel and Elkridge.
- Most Hispanics live in parts of Columbia, Laurel, Elkridge and Ellicott City with the greatest concentrations living in east Columbia and Laurel.
- It is clear that most minorities live in eastern Howard County with lesser concentrations in the western areas of Cooksville, West Friendship and Clarksville.

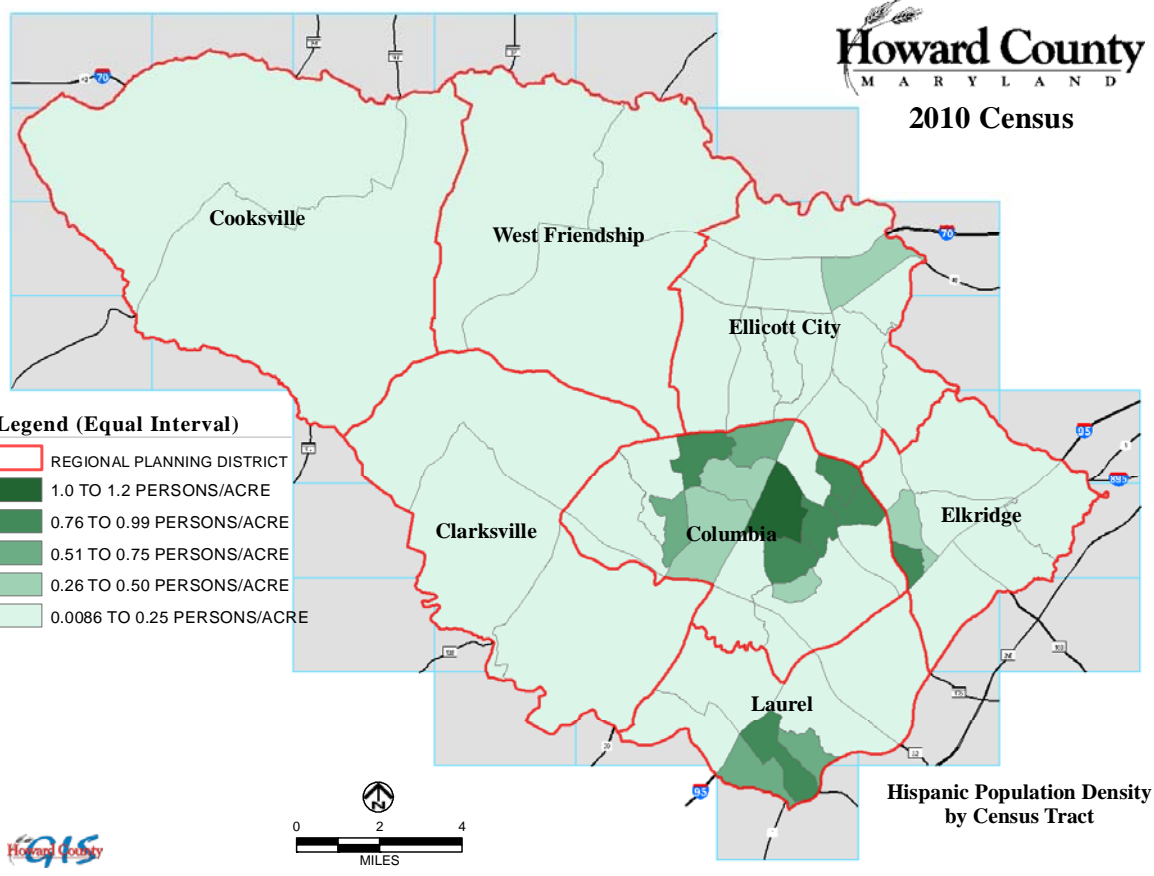
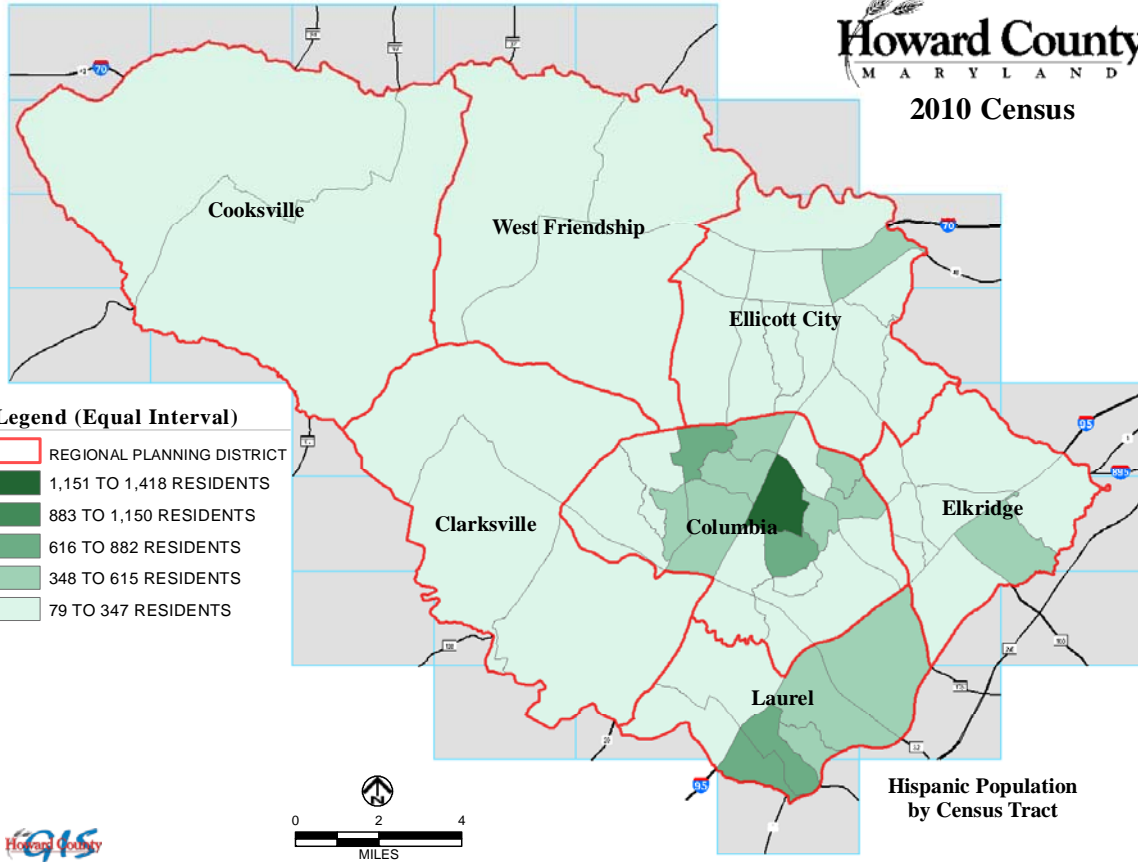
**Howard County**  
MARYLAND  
**2010 Census**











## 2000 to 2010 Population Growth Within Howard County

The tables below summarize the 2000 population by race in Howard County by Regional Planning District (RPD) and the growth over the decade from 2000 to 2010. The third table shows the percent change over the decade. Values in red indicate where population has declined from 2000 to 2010.

Howard County Population by Race by Regional Planning District - 2000

	West							TOTAL
	Elkridge	Ellicott City	Friendship	Cooksville	Clarksville	Columbia	Laurel	
<b>Population by One Race Alone</b>	<b>31,218</b>	<b>52,088</b>	<b>10,525</b>	<b>11,577</b>	<b>13,903</b>	<b>91,124</b>	<b>31,972</b>	<b>242,407</b>
White	25,266	41,432	9,538	10,919	12,301	61,765	22,994	184,215
Black or African American	3,601	3,785	466	454	554	20,550	6,320	35,730
American Indian & Alaska Native	74	78	14	38	31	231	117	583
Asian & Pacific Islander	1,984	6,499	457	123	958	7,020	2,083	19,124
Some Other Race	293	294	50	43	59	1,558	458	2,755
<b>Population of Two of More Races</b>	<b>624</b>	<b>890</b>	<b>120</b>	<b>96</b>	<b>196</b>	<b>2,638</b>	<b>871</b>	<b>5,435</b>
<b>TOTAL POPULATION</b>	<b>31,842</b>	<b>52,978</b>	<b>10,645</b>	<b>11,673</b>	<b>14,099</b>	<b>93,762</b>	<b>32,843</b>	<b>247,842</b>
<b>Total Hispanic Population (1)</b>	<b>704</b>	<b>1,117</b>	<b>132</b>	<b>171</b>	<b>238</b>	<b>3,884</b>	<b>1,244</b>	<b>7,490</b>

(1) Hispanic origin can be from any race.

Source: U.S. Census Bureau

Howard County Population Growth by Race by Regional Planning District - 2000 to 2010

	West							TOTAL
	Elkridge	Ellicott City	Friendship	Cooksville	Clarksville	Columbia	Laurel	
<b>Population by One Race Alone</b>	<b>7,475</b>	<b>8,799</b>	<b>4,916</b>	<b>2,032</b>	<b>3,173</b>	<b>3,571</b>	<b>4,257</b>	<b>34,223</b>
White	645	(1,129)	2,469	1,213	902	(6,555)	(3,237)	(5,692)
Black or African American	2,930	1,888	475	195	608	4,381	3,981	14,458
American Indian & Alaska Native	31	59	10	(16)	16	160	23	283
Asian & Pacific Islander	3,508	7,547	1,927	562	1,573	4,335	2,768	22,220
Some Other Race	361	434	35	78	74	1,250	722	2,954
<b>Population of Two of More Races</b>	<b>825</b>	<b>920</b>	<b>225</b>	<b>194</b>	<b>330</b>	<b>1,752</b>	<b>774</b>	<b>5,020</b>
<b>TOTAL POPULATION</b>	<b>8,300</b>	<b>9,719</b>	<b>5,141</b>	<b>2,226</b>	<b>3,503</b>	<b>5,323</b>	<b>5,031</b>	<b>39,243</b>
<b>Total Hispanic Population (1)</b>	<b>1,370</b>	<b>1,173</b>	<b>193</b>	<b>275</b>	<b>293</b>	<b>3,968</b>	<b>1,967</b>	<b>9,239</b>

(1) Hispanic origin can be from any race.

Source: U.S. Census Bureau

Howard County Percent Change in Population by Race by Regional Planning District - 2000 to 2010

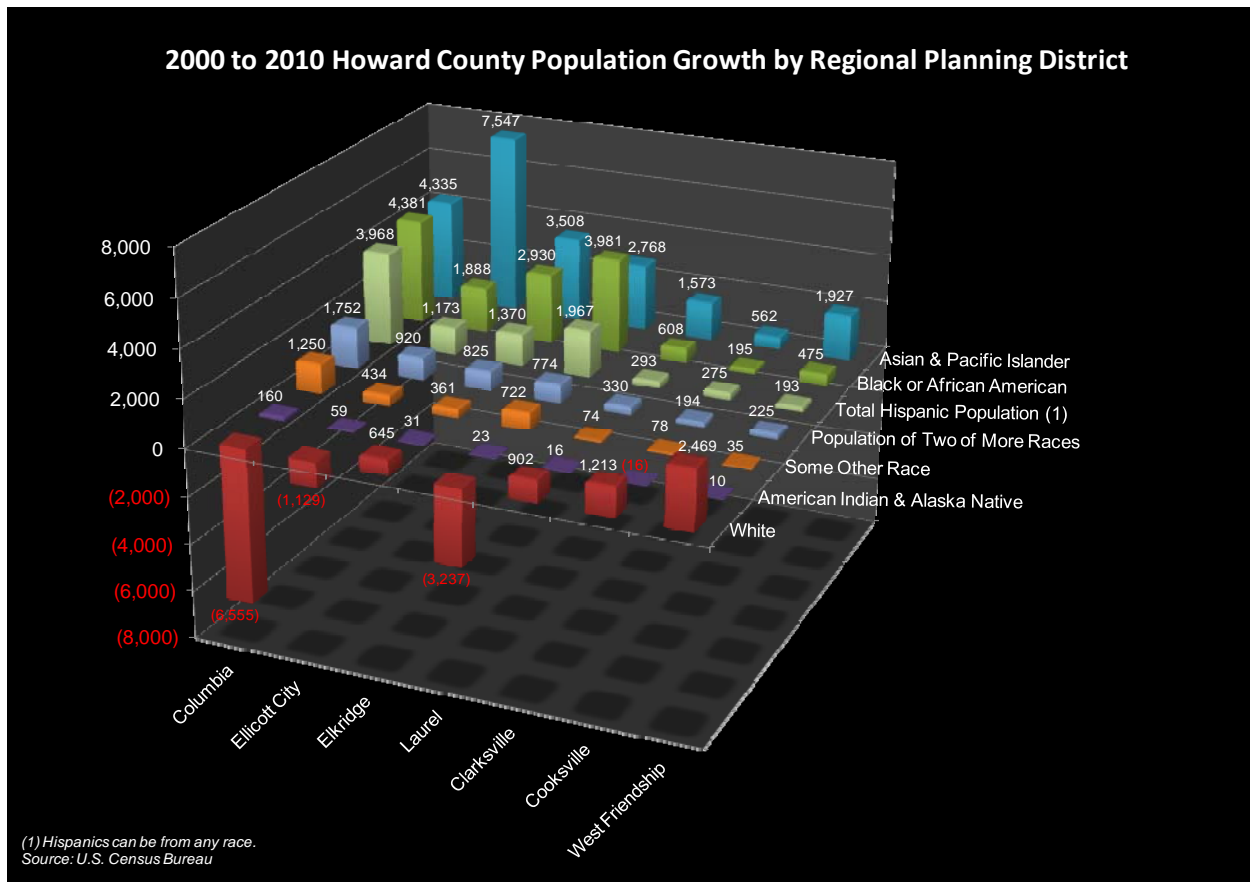
	West							TOTAL
	Elkridge	Ellicott City	Friendship	Cooksville	Clarksville	Columbia	Laurel	
<b>Population by One Race Alone</b>	<b>23.9%</b>	<b>16.9%</b>	<b>46.7%</b>	<b>17.6%</b>	<b>22.8%</b>	<b>3.9%</b>	<b>13.3%</b>	<b>14.1%</b>
White	2.6%	-2.7%	25.9%	11.1%	7.3%	-10.6%	-14.1%	-3.1%
Black or African American	81.4%	49.9%	101.9%	43.0%	109.7%	21.3%	63.0%	40.5%
American Indian & Alaska Native	41.9%	75.6%	71.4%	-42.1%	51.6%	69.3%	19.7%	48.5%
Asian & Pacific Islander	176.8%	116.1%	421.7%	456.9%	164.2%	61.8%	132.9%	116.2%
Some Other Race	123.2%	147.6%	70.0%	181.4%	125.4%	80.2%	157.6%	107.2%
<b>Population of Two of More Races</b>	<b>132.2%</b>	<b>103.4%</b>	<b>187.5%</b>	<b>202.1%</b>	<b>168.4%</b>	<b>66.4%</b>	<b>88.9%</b>	<b>92.4%</b>
<b>TOTAL POPULATION</b>	<b>26.1%</b>	<b>18.3%</b>	<b>48.3%</b>	<b>19.1%</b>	<b>24.8%</b>	<b>5.7%</b>	<b>15.3%</b>	<b>15.8%</b>
<b>Total Hispanic Population (1)</b>	<b>194.6%</b>	<b>105.0%</b>	<b>146.2%</b>	<b>160.8%</b>	<b>123.1%</b>	<b>102.2%</b>	<b>158.1%</b>	<b>123.4%</b>

(1) Hispanic origin can be from any race.

Source: U.S. Census Bureau

The chart below is a graphical representation of the population growth by race for each Regional Planning District in Howard County from 2000 to 2010. The greatest growth in the White population occurred in West Friendship, followed by Cooksville and then Clarksville. The White population declined Laurel, Columbia and Ellicott City. Columbia received the greatest increase in the Black or African American population, followed by Elkrigde and then Ellicott City. Ellicott City had the greatest increase in the Asian and Pacific Islander population, followed by Columbia and then Elkrigde. In fact, the greatest increase in population of all the categories was the Asian and Pacific Islander population in Ellicott City (an increase of 7,547 residents). Columbia had the greatest increase in both the Hispanic and the Some Other Race categories.

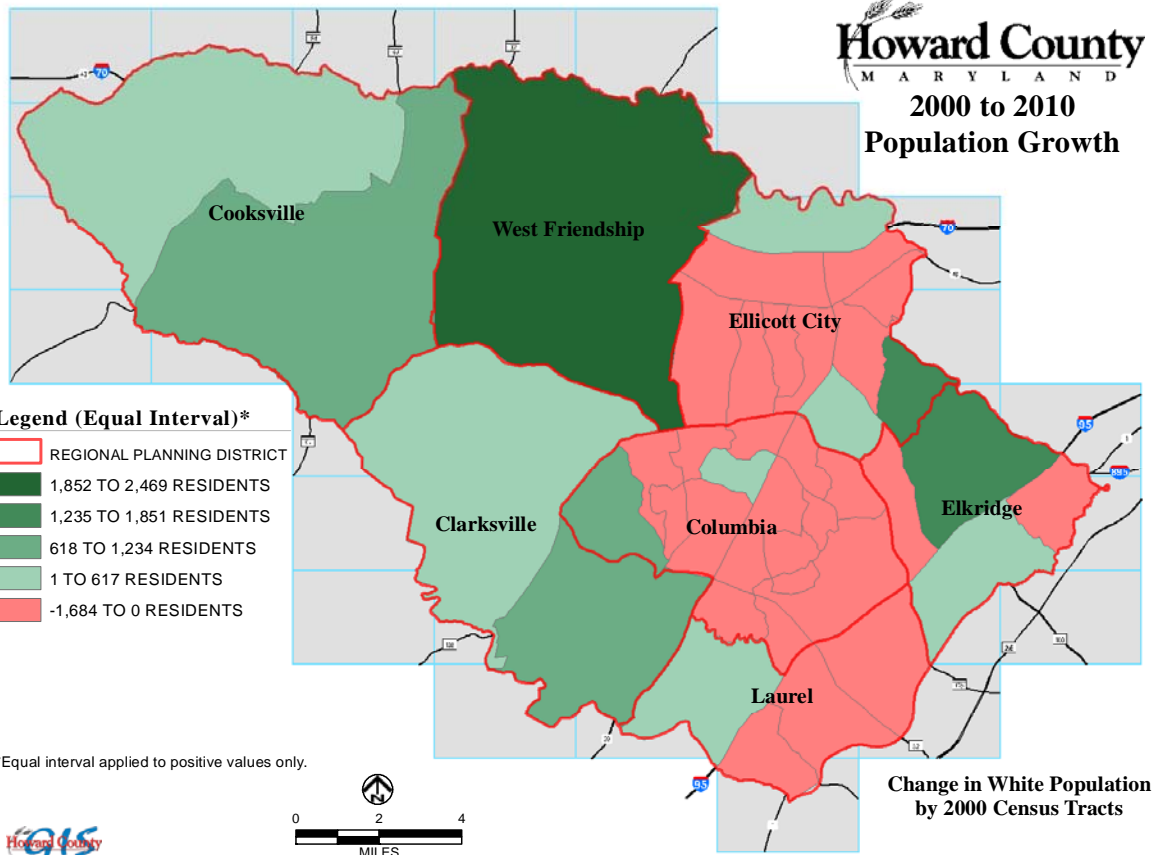
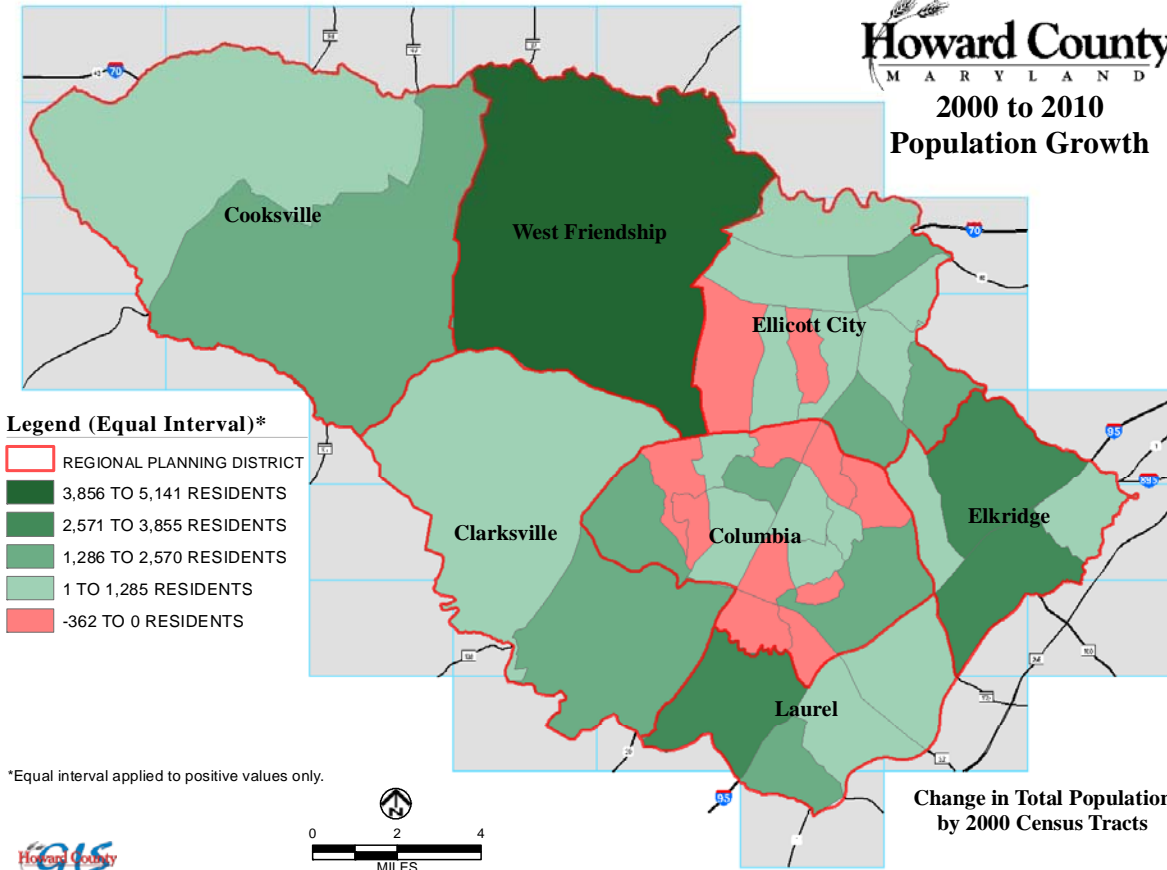
In terms of percent change over the last decade, the total population in Columbia grew by a modest 5.7 percent. However, during this time period the White population decreased by 10.6 percent while the Hispanic, Some Other Race, Asian & Pacific Islander and African American populations increased by 102.2, 80.2, 61.8 and 21.3 percent, respectively. This clearly indicates the growing racial diversity in Columbia over the last ten years. This pattern also occurs with larger minority population growth, to a lesser or greater extent, in the other Regional Planning Districts, an indication that increasing racial diversity is a Countywide phenomenon.



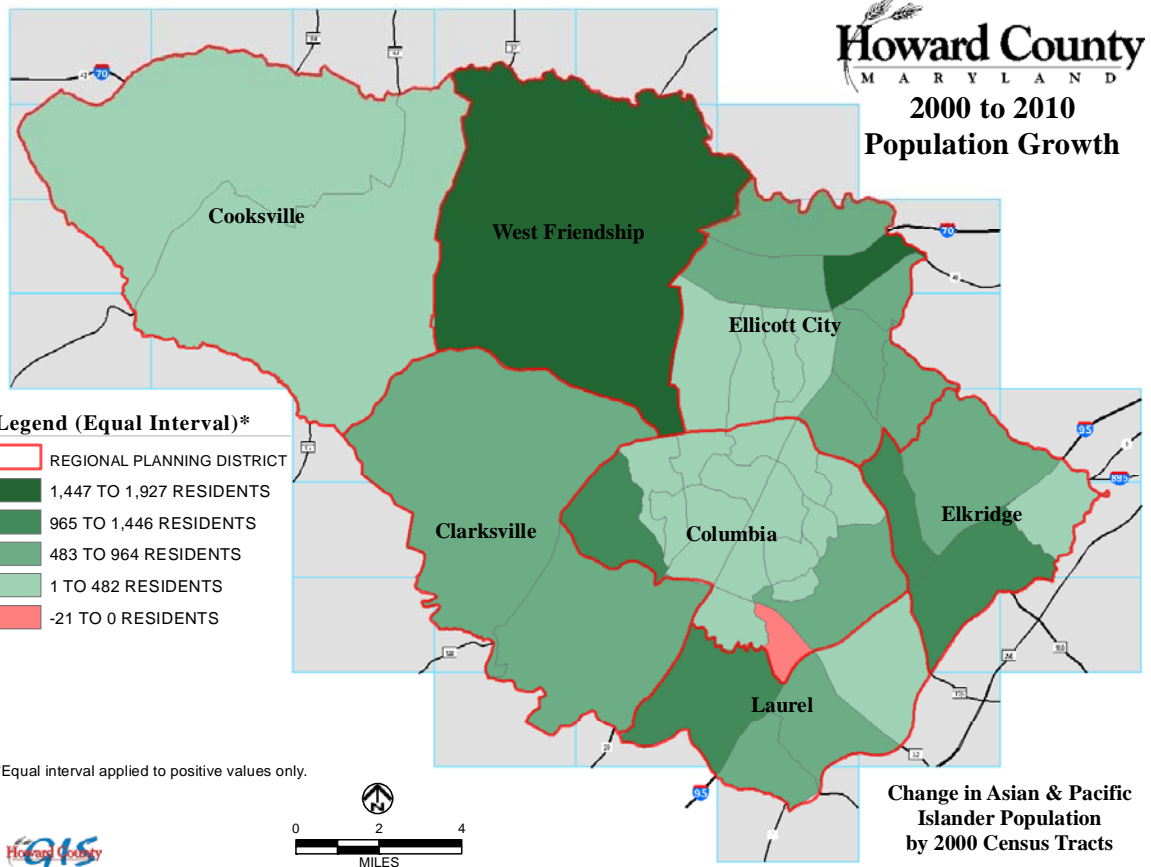
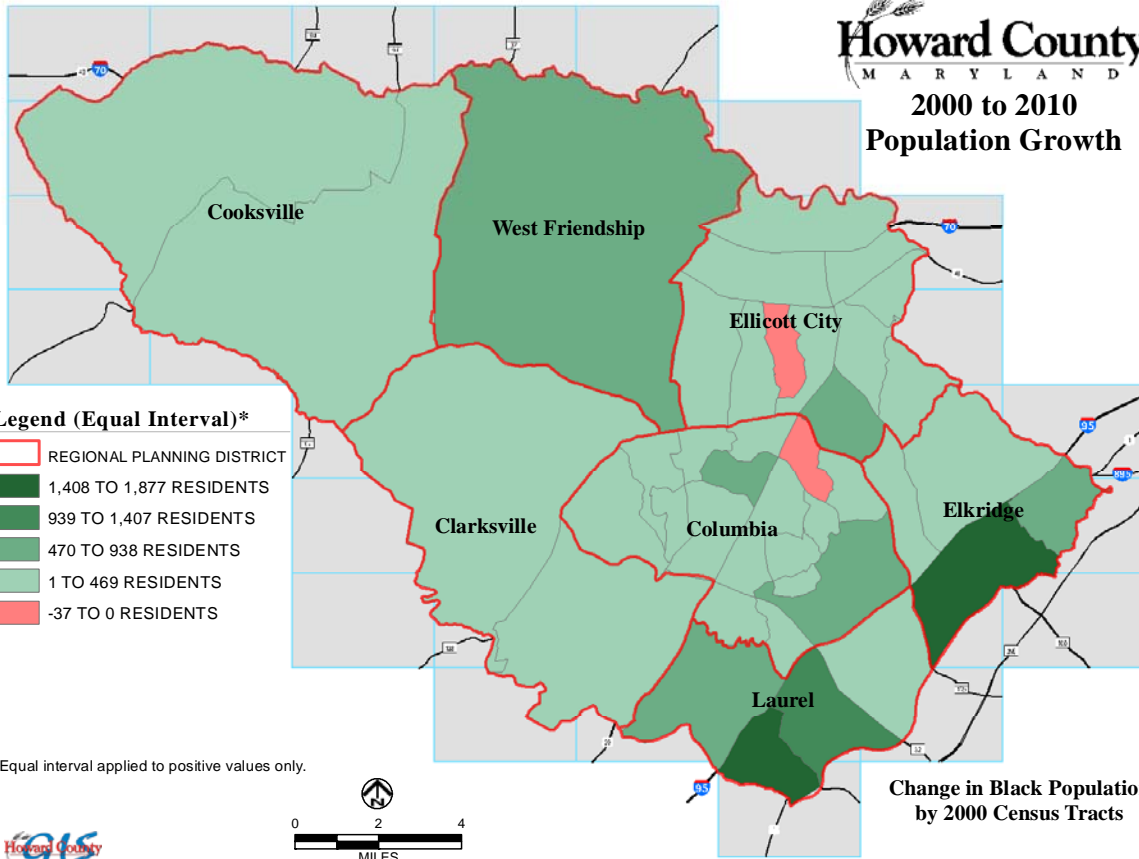
The series of maps below show the population growth by race by census tract. The maps better show how the populations increased within each of the Regional Planning Districts – the darker the shade, the greater the number. The red indicates a population decline over the 10 year period. The first map shows the total population growth. The subsequent maps show the population growth for each race. The last map shows the growth in the minority population (all except non-Hispanic Whites). The following summarizes some of the major findings:

- Some census tracts in Columbia and parts of Ellicott City experienced slight total population *declines* over the last ten years by as much as 362 residents. Areas with the greatest increase in *total* population include West Friendship, parts of Elkridge, and the southeast part of the County east of U.S. 29.
- The White population has decreased significantly as shown in the second map, with large portions of Columbia, Ellicott City and Laurel showing decreases. Parts of Elkridge have also experienced a decrease in the White population over the decade.
- The southeast part of Elkridge has seen relatively large increases in the African American population. There has also been a relatively large increase of African Americans in the southeast part of Laurel.
- Asian and Pacific Islander growth has been concentrated in West Friendship, western Columbia and northern Ellicott City. Laurel, Elkridge, and Clarksville have also had increases in Asian and Pacific islanders.
- The greatest increases in the Hispanic population, although smaller in numbers compared to the other races, have occurred in the eastern part of Columbia and Laurel. Relatively large increases in the Hispanic population have also occurred in the Elkridge area.
- The last map shows the 10 year growth of all minorities combined (all except non-Hispanic Whites). The map clearly shows that the minority population has increased in all parts of the County. Elkridge, Laurel and West Friendship has seen the most significant minority population growth.

**Howard County**  
 MARYLAND  
 2000 to 2010  
 Population Growth



**Howard County**  
 MARYLAND  
 2000 to 2010  
 Population Growth



**Howard County**  
 MARYLAND  
 2000 to 2010  
 Population Growth

