

Bicycle Advisory Group Meeting

November 18, 2019



RESPONSIBILITIES OF THE BICYCLE ADVISORY GROUP:

- (A) ADVISE AND INFORM THE OFFICE ON TRANSPORTATION MATTERS;
- (B) PROVIDE ADDITIONAL SUBJECT MATTER EXPERTISE TO THE OFFICE; AND
- (C) PROVIDE FEEDBACK AND TECHNICAL ASSISTANCE ON THE IMPLEMENTATION OF MASTER PLANS AND OTHER INITIATIVES AND POLICY ISSUES.



Howard County
OFFICE OF TRANSPORTATION

Upcoming Events

- **November 19th**
Robert Fulton Drive Public Meeting
- **December 2nd**
County Executive Ball's Transportation Forum
- **January 14th**
next Bicycle Advisory Group Meeting
- **January 15th**
Hickory Ridge Bike Corridor Public Meeting
- **January 28th**
BikeHoward Open House

Upcoming Events

- **November**
Robert F
- **December**
County E
- **January**
next Bicy
- **January**
Hickory
- **January**
BikeHow



Howard County
Office of Transportation
transportation@howardcountymd.gov
(410) 313-4312

How can we make it easier to walk or bike into Gateway?
We have some ideas, but we need to hear from you!
Therefore, we've scheduled a public meeting for November 19th at Guilford E.S.

Project Goals:

- Access to Columbia Gateway from surrounding communities
- Access from Columbia Gateway to nearby "lunch hour" restaurants/retail
- Connections to nearby projects on Oakland Mills Road, McGaw Road, and Snowden River Parkway, as well as the Columbia pathway network

Key Questions:

- Should access be from Oakland Mills Road or McGaw Road?
- How can we best meet the needs of Snowden Ridge, Riderwood, Gateway Condominium, and Stonehaven Apartment residents?
- How can we best meet the needs of workers in Columbia Gateway?

When and Where:

- Tuesday, November 19, 2019
No formal presentation; please drop in any time from 6:00 PM to 7:30PM
- Guilford Elementary School Cafeteria
7335 Oakland Mills Rd, Columbia, MD 21046
- Meeting materials to be posted on the project website after the meeting:
howardcountymd.gov/Robert-Fulton-Drive

ion Forum

g

Meeting

Upcoming Events

TRANSPORTATION FORUM

Hosted by
Calvin Ball, Howard County Executive



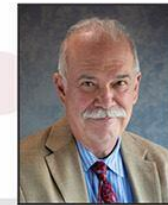
Monday, December 2, 2019

7:00 - 8:30 P.M.

Elkridge Fire Station
5700 Rowanberry Drive
Elkridge, MD 21075
[Transit: RTA Route 409]

Joining Dr. Ball for this event will be:

Howard County Office of Transportation: *Bruce Gartner, Administrator*
Howard County Police Department: *Captain Chris Neubauer*
Howard County Department of Public Works: *James M. Irvin, P.E., Director*



Topics Include:

Transportation Safety, Complete Streets Implementation,
Bike and Pedestrian Master Plans, Highway Traffic and Maintenance,
RTA Service Improvements, Long Range Transportation Plans,
Transportation Priority Requests to MDOT



Jason Quan,
Transit Manager



Chris Eatough,
Bicycle and Pedestrian
Coordinator




Kris Jagarapu,
Chief, Bureau of
Highways



Cristin Tolen,
General Manager,
RTA



David Cookson,
Transportation
Planning Manager

Registration begins at 6:30 p.m. Presentations and question and answer session begin at 7:00 p.m.  Follow live on Facebook @HoCoGovExec

for more information contact the Howard County Office of Transportation at 410-313-4312 or transportation@howardcountymd.gov



Complete Streets Implementation Update

County Council of Howard County, Maryland

2019 Legislative Session

Legislative Day No. 11

Resolution No. 120-2019

Introduced by: Chairperson at the request of the County Executive
Co-sponsored by: Opel Jones, Deb Jung and Christiana Mercer Rigby

A RESOLUTION adopting the Howard County Complete Streets Policy and requiring the development of a Complete Streets Design Manual.

Introduced and read first time September 3, 2019.

By order Diane Schwartz Jones
Diane Schwartz Jones, Administrator

Read for a second time at a public hearing on September 16, 2019.

By order Diane R. A. Jones
Diane Schwartz Jones, Administrator

This Resolution was read the third time and was Adopted , Adopted with amendments , Failed , Withdrawn , by the County Council on October 7, 2019.

Certified By Diane A. Jones
Diane Schwartz Jones, Administrator

NOTE: [[text in brackets]] indicates deletions from existing law; TEXT IN SMALL CAPITALS indicates additions to existing law; ~~Strike-out~~ indicates material deleted by amendment; Underlining indicates material added by amendment

1 **WHEREAS**, the Complete Streets Implementation Team has prepared the Howard
2 County Complete Streets Policy based on national best practices, substantially in the form
3 attached as Exhibit A; and

4
5 **WHEREAS**, the Complete Streets Policy establishes a data driven project selection
6 process, prioritizes projects in communities with vulnerable populations, requires transparent
7 decision making and reporting and emphasizes that safety is the top priority for our streets; and
8

9 **WHEREAS**, the Complete Streets Policy has been reviewed and endorsed by the
10 Howard County Multimodal Transportation Board, presented at stakeholder meetings, and
11 posted on the Howard County Office of Transportation's website in the form of Exhibit A since
12 July 5, 2019; and

13
14 **WHEREAS**, the County Executive wishes to adopt the Complete Streets Policy,
15 substantially in the form attached as Exhibit A, and has further directed the Complete Streets
16 Implementation Team to continue its work on the development of a Complete Streets Design
17 Manual, to be submitted to Council within 24 months of County Council's vote to approve the
18 Complete Streets Policy.

19
20 **NOW, THEREFORE, BE IT RESOLVED** by the County Council of Howard County,
21 Maryland, this 7th day of October, 2019, that it hereby adopts the
22 Howard County Complete Streets Policy, substantially in the form attached as Exhibit A.

23
24 **AND BE IT FURTHER RESOLVED**, that the Complete Streets Implementation Team
25 shall provide ~~regular updates~~ semiannual reports to the Council on the implementation of the
26 various elements of the policy and develop a Complete Streets Design Manual to be submitted to
27 Council within 24 months of County Council's vote to approve the Complete Streets Policy.

Complete Streets Implementation Update

County Council of Howard County, Maryland

2019 Legislative Session

Legislative Day No. 11

Resolution No. 120-2019

20 **NOW, THEREFORE, BE IT RESOLVED** by the County Council of Howard County,
21 Maryland, this 7th day of October, 2019, that it hereby adopts the
22 Howard County Complete Streets Policy, substantially in the form attached as Exhibit A.

23
24 **AND BE IT FURTHER RESOLVED**, that the Complete Streets Implementation Team
25 shall provide ~~regular updates~~ semiannual reports to the Council on the implementation of the
26 various elements of the policy and develop a Complete Streets Design Manual to be submitted to
27 Council within 24 months of County Council's vote to approve the Complete Streets Policy.

Certified By *Diane Schwartz Jones*
Diane Schwartz Jones, Administrator

NOTE: [[text in brackets]] indicates deletions from existing law; TEXT IN SMALL CAPITALS indicates additions to existing law; ~~Strike-out~~ indicates material deleted by amendment; Underlining indicates material added by amendment

Complete Streets Implementation Update

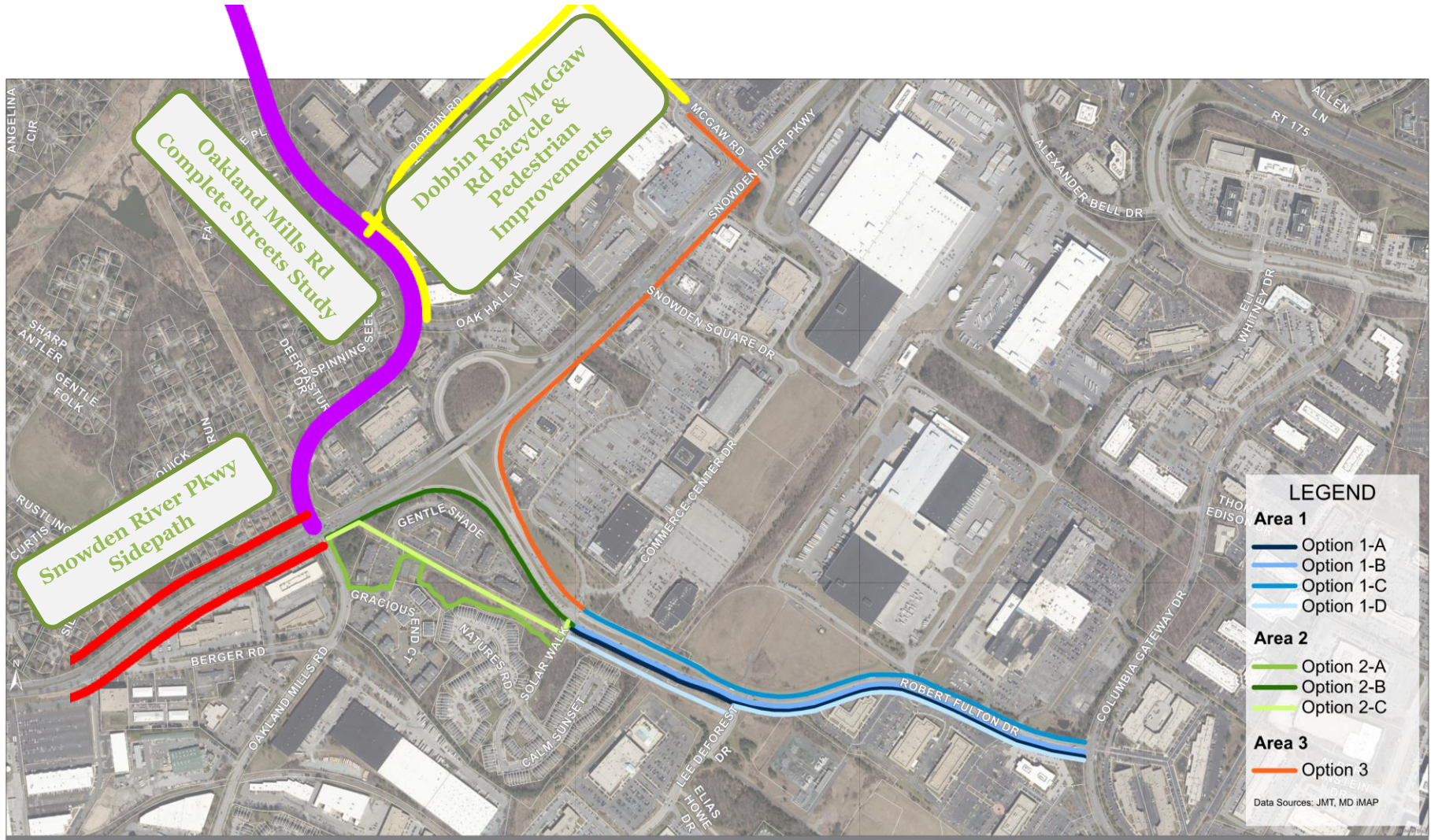


Howard County Charter, Section 914

c. The word “resolution” shall mean a measure adopted by the Council having the force and effect of law but of a temporary or administrative character.

d. The word “law” shall be construed as including all acts, public local laws, resolutions and other legislative acts of the Council...

Robert Fulton Drive Pathway Concepts



Preliminary Impacts Analysis

Item	Option 1A	Option 1B	Option 1C	Option 1D	Option 2A	Option 2B	Option 2C	Option 3
Cost Estimate ¹	\$2.8 Million	\$2.6 Million	\$2.8 Million	\$2.1 Million	\$1.5 Million	\$1.4 Million	\$1.1 Million	\$2.5 Million
Right-of-Way ²	1.19 Acre	2.25 Acre	0.97 Acre	2.51 Acre	2.02 Acre	0.55 Acre	2.12 Acre	1.46 Acre
Number of Parcels Impacted ²	8	6	8	8	5	3	3	8
Forest ³	0.9 Acre	1.0 Acre	0.8 Acre	0.3 Acre	0.9 Acre	0.9 Acre	0.3 Acre	0.4 Acre
Forest Conservation Easement	-	-	-	-	0.65 Acre	0.49 Acre	0.10 Acre	-
Potential Waters and Wetlands ⁴	-	-	-	-	-	-	-	-
Utility / Light Poles	8	12	8	6	6	4	2	5
Driveways / Entrances	6	4	6	6	1	1	-	4
Fire Hydrant Locations	3	4	4	3	-	3	-	1
Business Signages	2	3	2	1	1	-	-	1
Traffic Signal Upgrades (per leg) ⁵	2	1	2	1	1	1	1	2

Total Project Cost and Impacts will be either a combination of one of the Option 1 and one of the Option 2 concepts or one of the Option 1 and the Option 3 concept.

- 1) Does not include right-of-way costs.
- 2) Right-of-Way Impacts include both permanent and temporary construction easements.
- 3) Based on aerial imagery.
- 4) Potential Wetlands based on NWI Mapping, no delineation has been done at this time.
- 5) The existing traffic signal at the intersection of Oakland Mills Road and Snowden River Parkways is anticipated to be upgraded as part of a separate project and is not included in the impacts analysis / cost estimate.

Road Patching



KRIS JAGARAPU, PE

**CHIEF, BUREAU OF HIGHWAYS
DEPARTMENT OF PUBLIC WORKS**

FY2021 Capital Budget Discussion



SEE HANDOUT

Countywide Bike Wayfinding



JMT



HOWARD COUNTY WAYFINDING PLAN

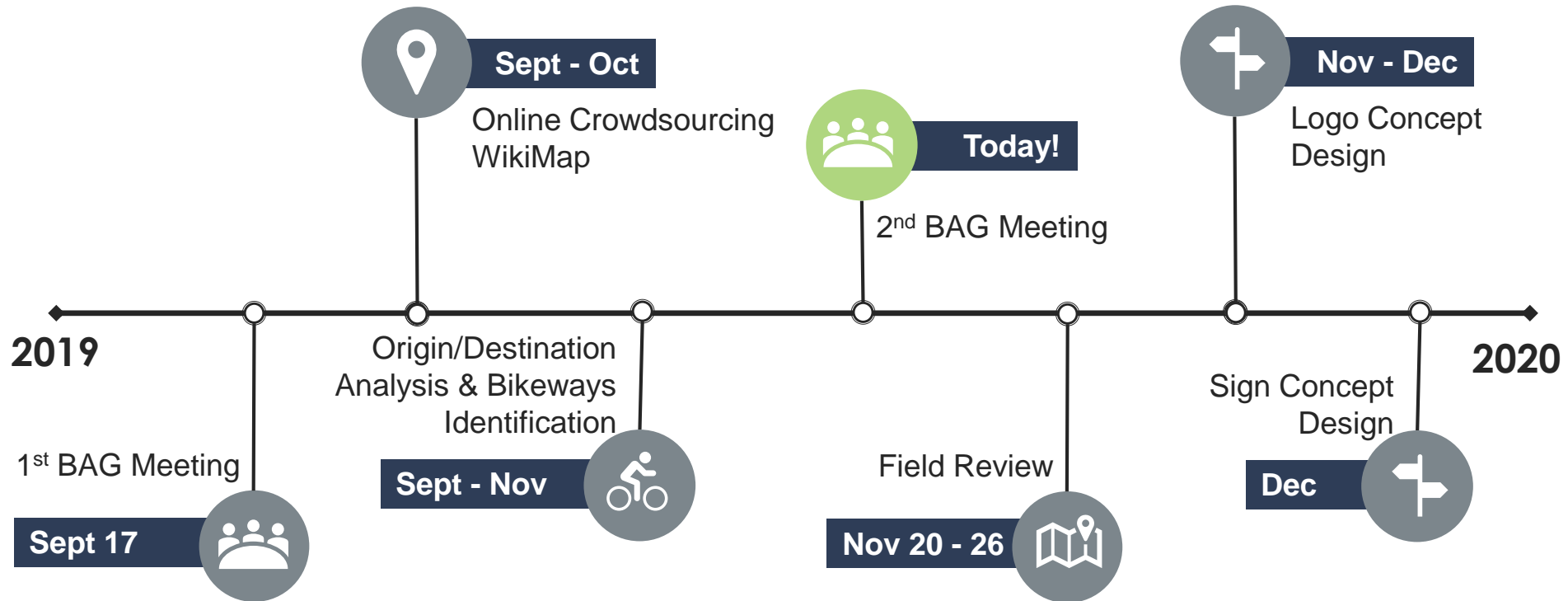
Project Update

PRESENTED TO:

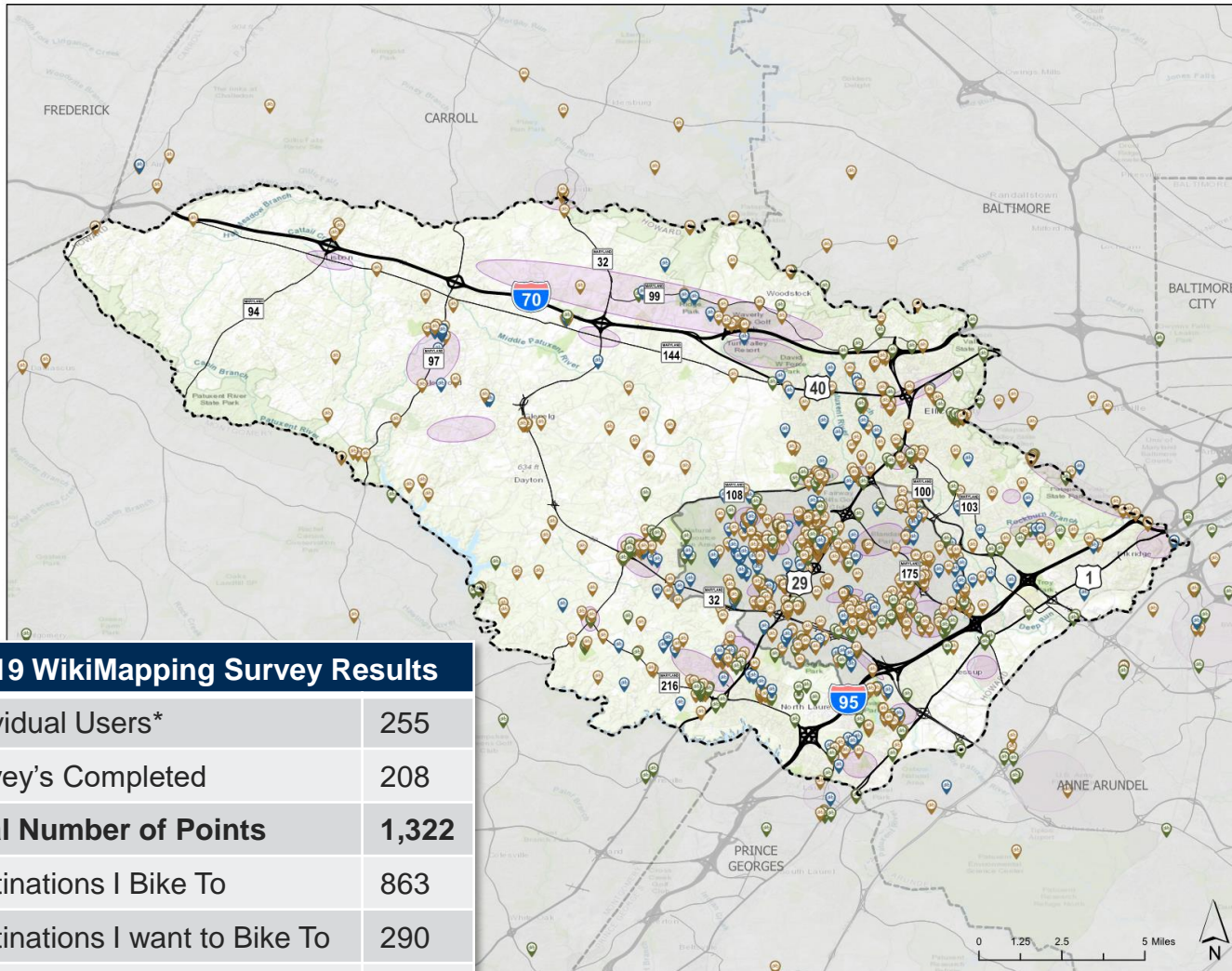
Howard County Bicycle Advisory Group

NOVEMBER 18, 2019

Project Timeline












Wiki Mapping Results



Howard County Bicycle Wayfinding Survey

Survey Results

-  Places I Bike From
-  Destinations I Bike To
-  Destinations I Would Like To Bike To
-  Maryland Routes
-  US Routes
-  Interstates
-  Columbia
-  Key Destinations
-  County Boundary

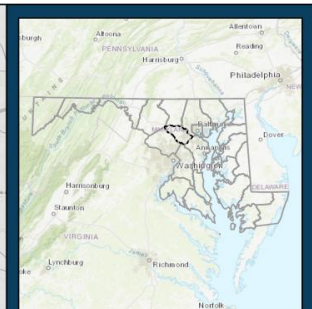
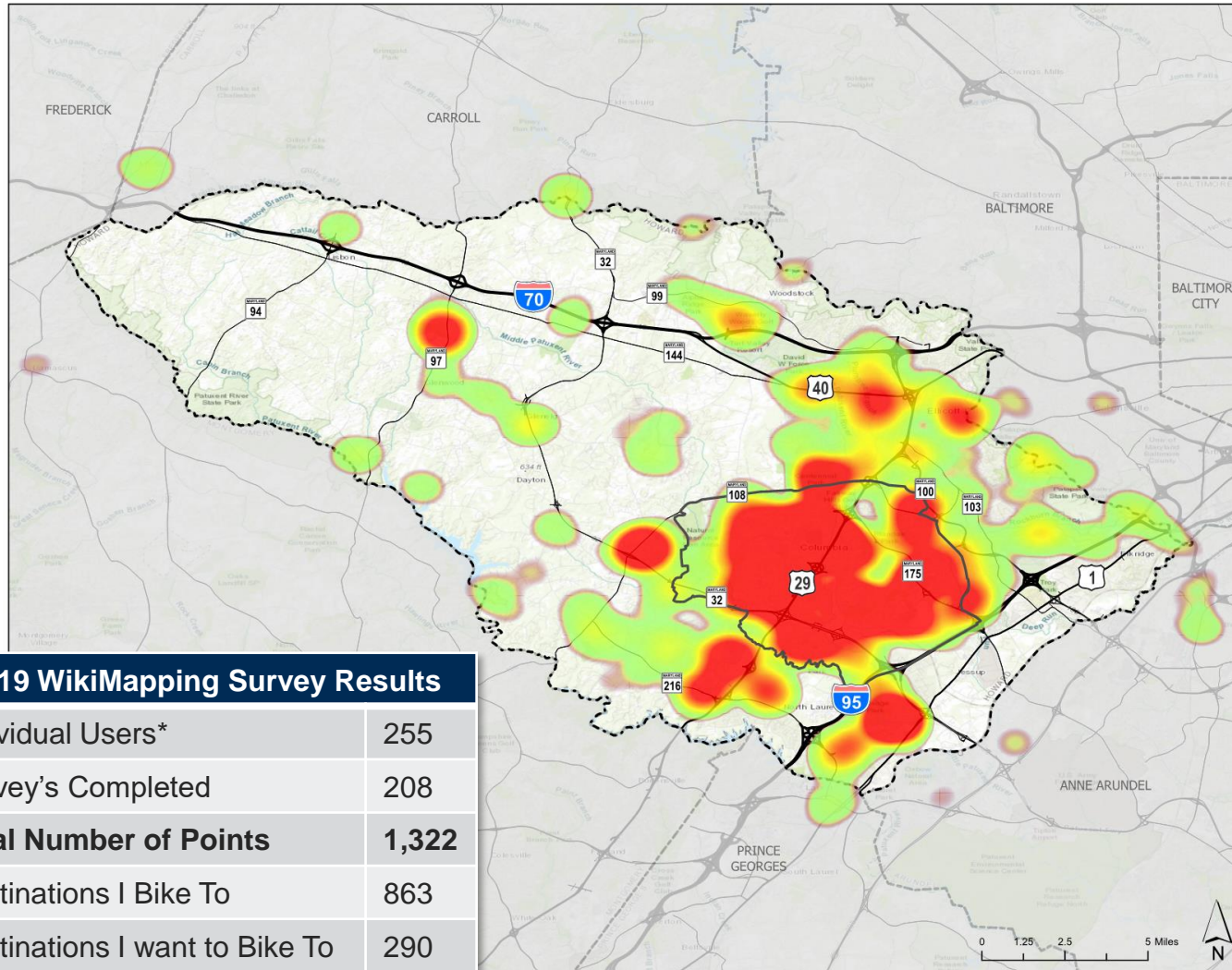
Note: Data was collected from a publicly available online survey.

Sources: MD IMAP & Howard County



2019 WikiMapping Survey Results	
Individual Users*	255
Survey's Completed	208
Total Number of Points	1,322
Destinations I Bike To	863
Destinations I want to Bike To	290
Places I Bike From	169

Wiki Mapping Results



Howard County Bicycle Wayfinding Survey

All Users - Places I Bike From & Destinations I Bike To

- Maryland Routes
- US Routes
- Interstates
- Columbia
- County Boundary
- Actively Occurring Trips
- Low Concentration
- High Concentration

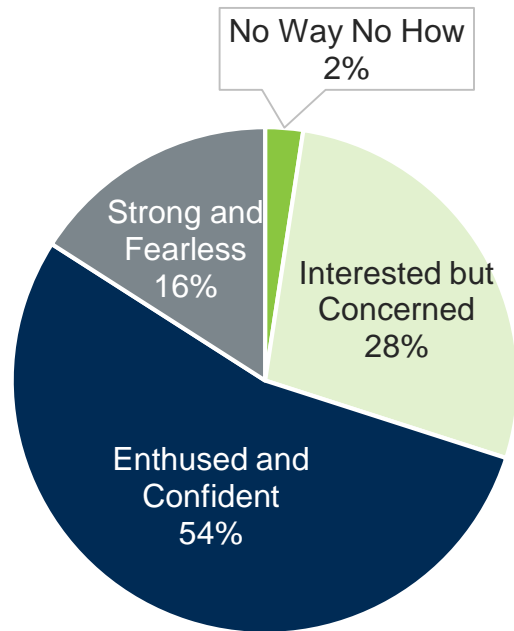
Note: Actively Occurring Trips includes 169 "Places I Bike From" and 863 "Destinations I Bike To." Data was collected from a publicly available online survey.

Sources: MD iMAP & Howard County

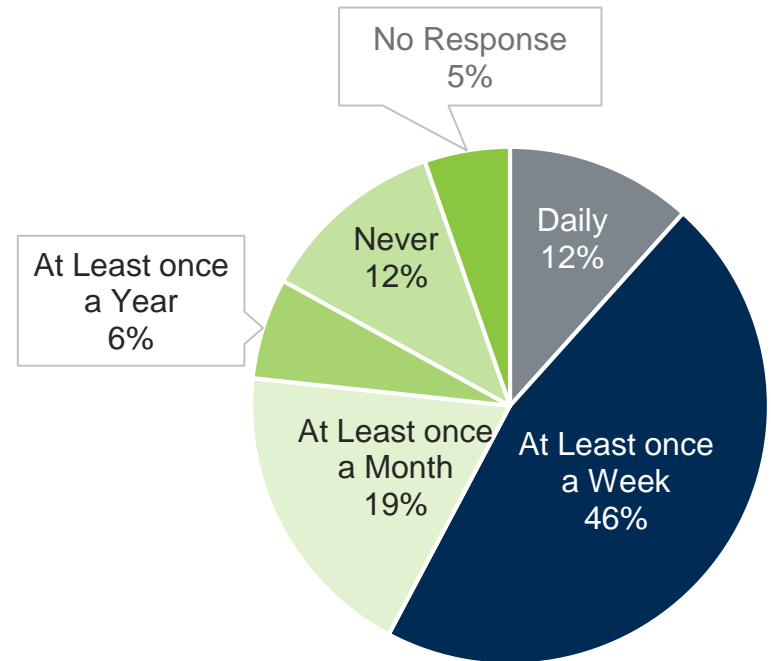


2019 WikiMapping Survey Results	
Individual Users*	255
Survey's Completed	208
Total Number of Points	1,322
Destinations I Bike To	863
Destinations I want to Bike To	290
Places I Bike From	169

Wiki Mapping Results



Cyclist Categories



How Often do you Ride?

Wiki Mapping Results

Trip Purposes

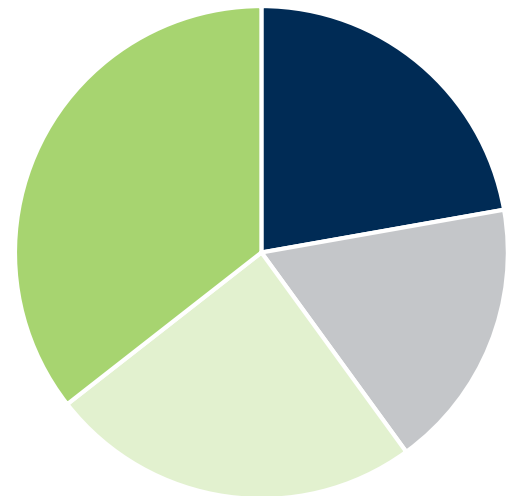
- Work/School
- Shopping/Dining
- Personal Business
- Recreation



Interested but Concerned



Enthusied and Confident



Strong and Fearless

Polling Instructions

Send text to: 22333
Message: bag

- Provider text messaging rates and data usage charges may apply
- For multiple choice questions, type your letter choice for the corresponding answer
- For word cloud answers, only a 1-word response is allowed
- Text “leave” once the poll is finished. If you forget, you will be automatically signed out after 24 hours

Bicycle Routes Branding Options

A:



B:



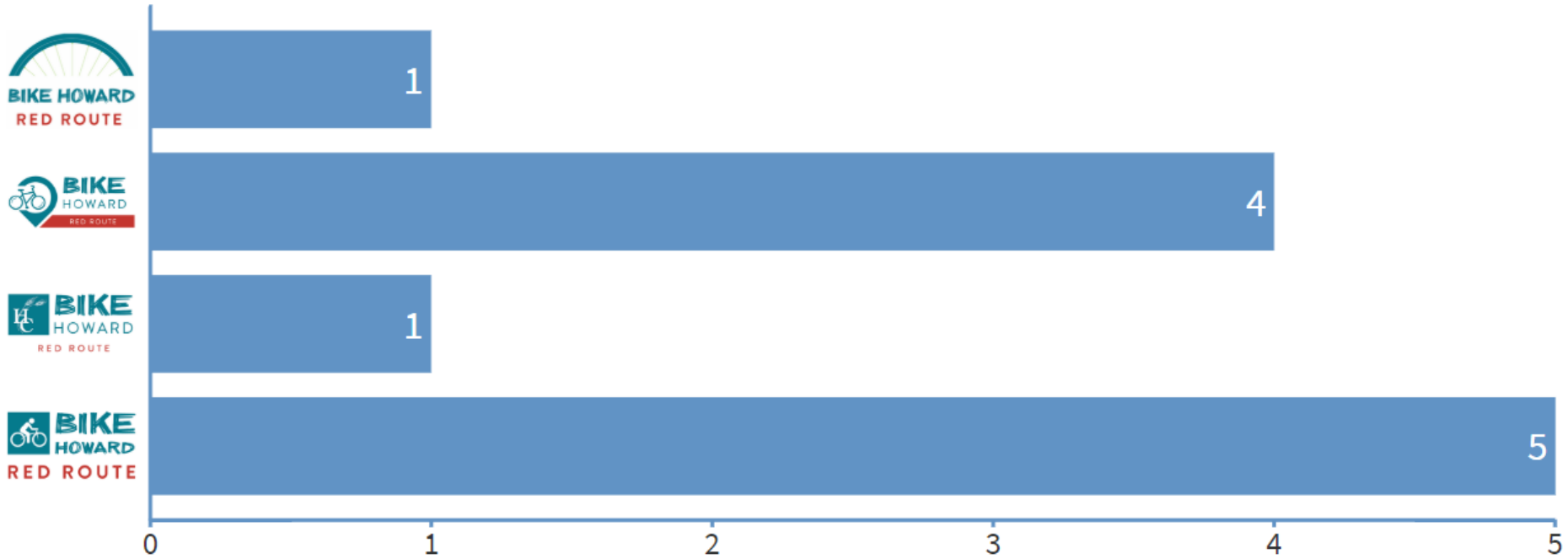
C:



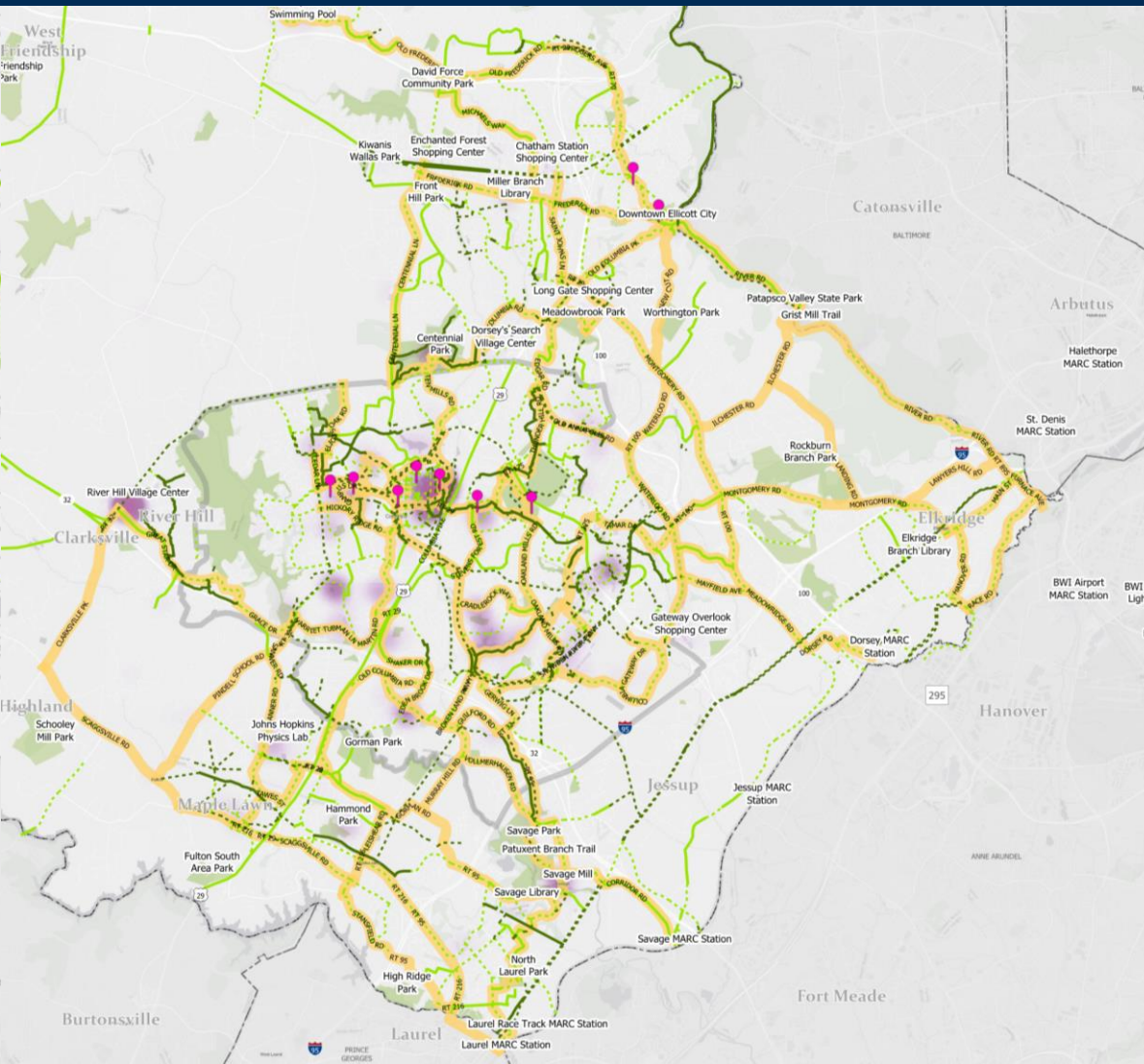
D:



Pick your Favorite



Draft Bicycle Routes



Legend

-  Draft Primary Bikeways
-  Additional Routes for Consideration

Bike Howard Master Plan Off Road Recommendations

-  Existing
-  Planned

Bike Howard Master Plan On Road Recommendations

-  Existing
-  Planned

-  Howard County Bikeshare Station Location
-  Pedestrian Crossing of Limited Access Highway

-  Key Destinations from Public Input

-  Howard County Parks

-  County Boundary



QUESTIONS?

Allysha Lorber
Johnson, Mirmiran and Thompson, Inc.
alorber@jmt.com
410-316-2364