

Bicycle Advisory Group Meeting

June 19, 2018



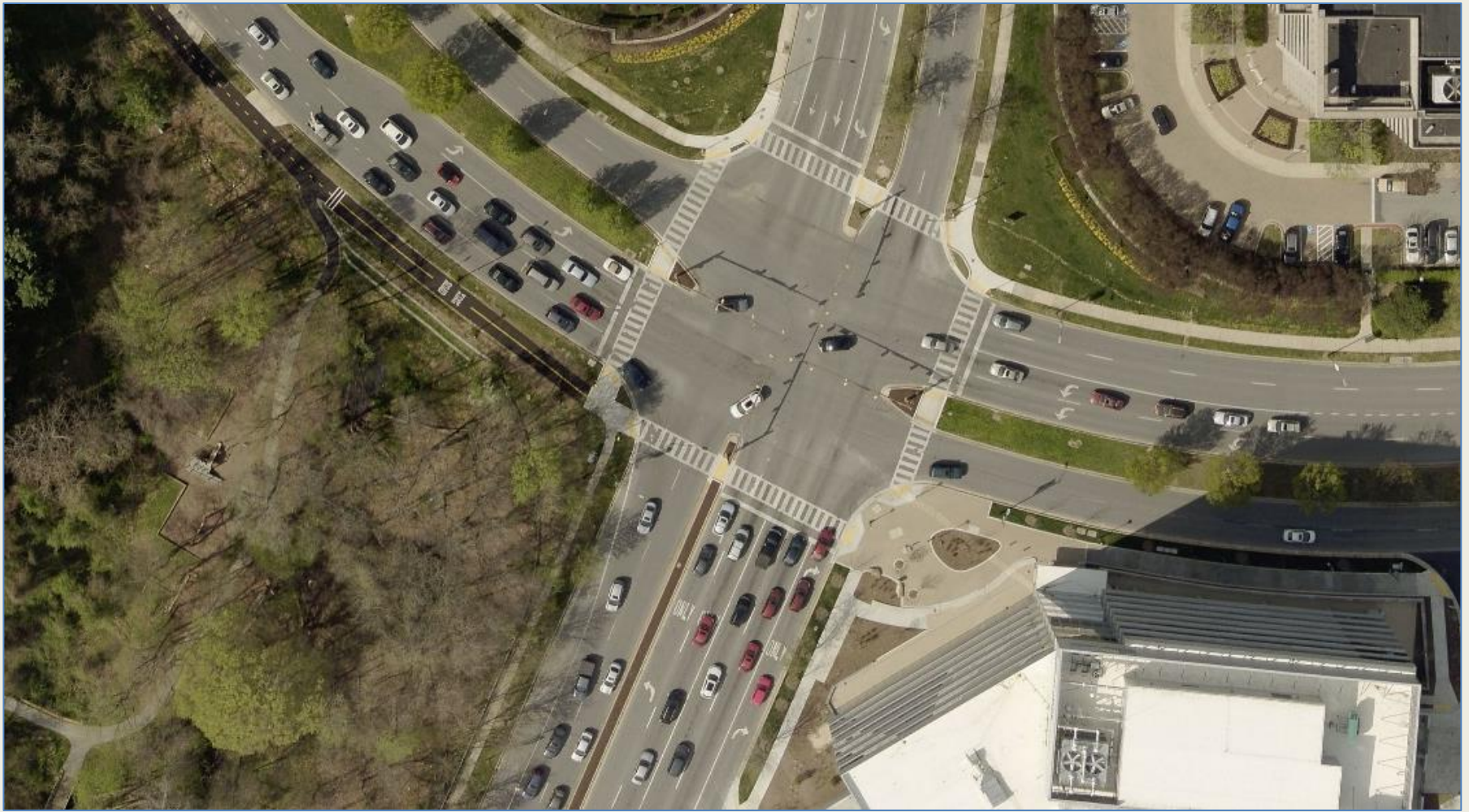
RESPONSIBILITIES OF THE BICYCLE ADVISORY GROUP:

- (A) ADVISE AND INFORM THE OFFICE ON TRANSPORTATION MATTERS;
- (B) PROVIDE ADDITIONAL SUBJECT MATTER EXPERTISE TO THE OFFICE; AND
- (C) PROVIDE FEEDBACK AND TECHNICAL ASSISTANCE ON THE IMPLEMENTATION OF MASTER PLANS AND OTHER INITIATIVES AND POLICY ISSUES.

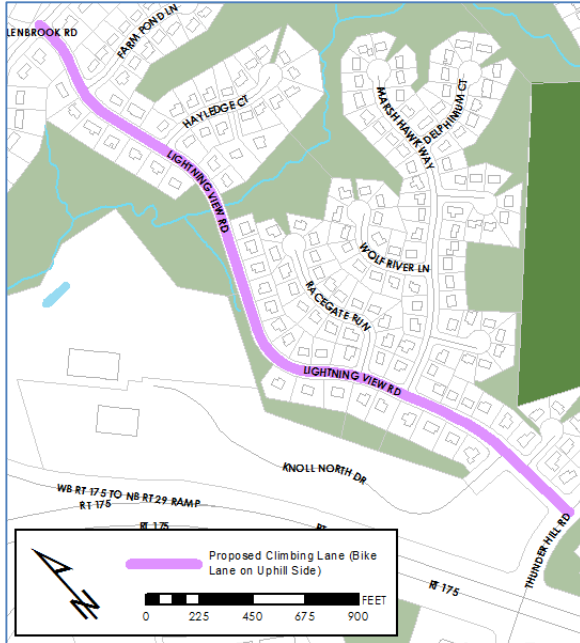


Howard County
OFFICE OF TRANSPORTATION

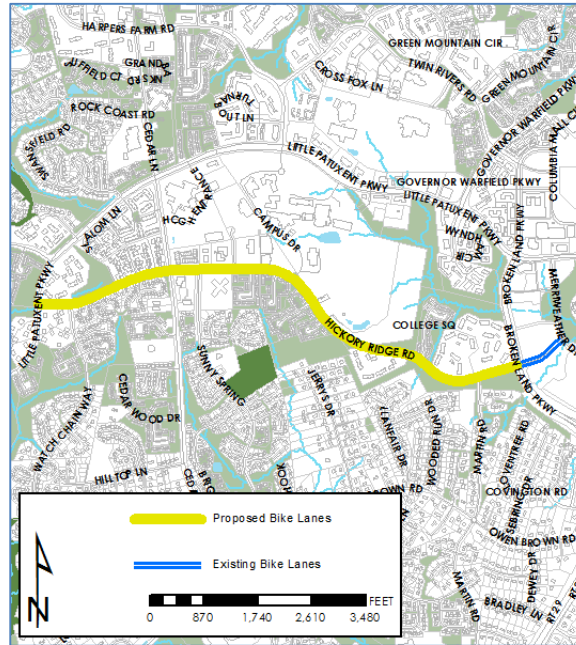
Intersection of Little Patuxent Parkway and Broken Land Parkway



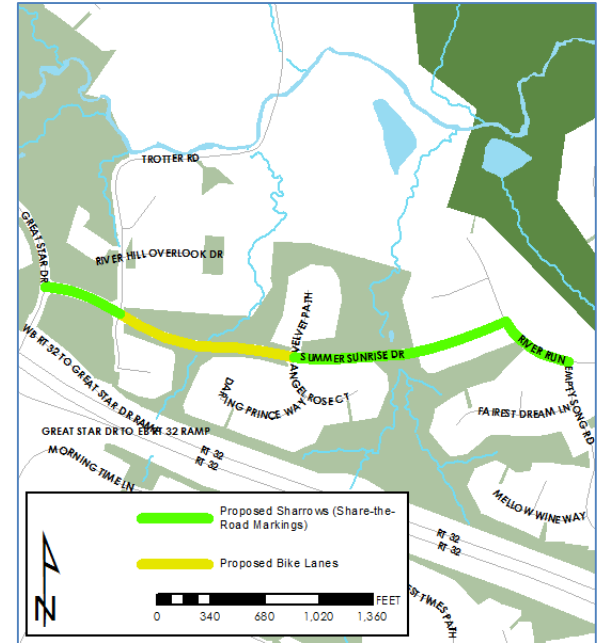
Bike Lanes with Resurfacing



Lightning View Road
Columbia (Oakland Mills)



Hickory Ridge Road
Columbia (Hickory Ridge)



Summer Sunrise Drive
River Run
Columbia (River Hill)

Main Street in Ellicott City



Main Street in Ellicott City



Main Street in Ellicott City

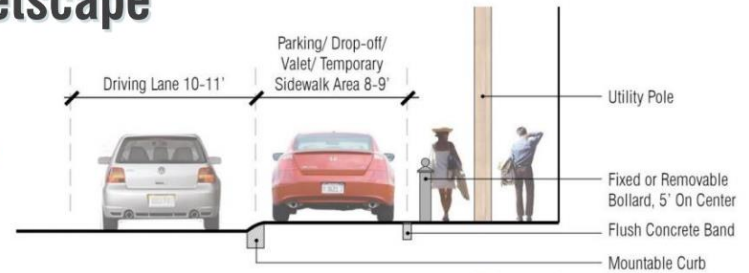


www.howardcountymd.gov/Departments/Planning-and-Zoning/Community-Planning/Community-Plans/EC-Master-Plan

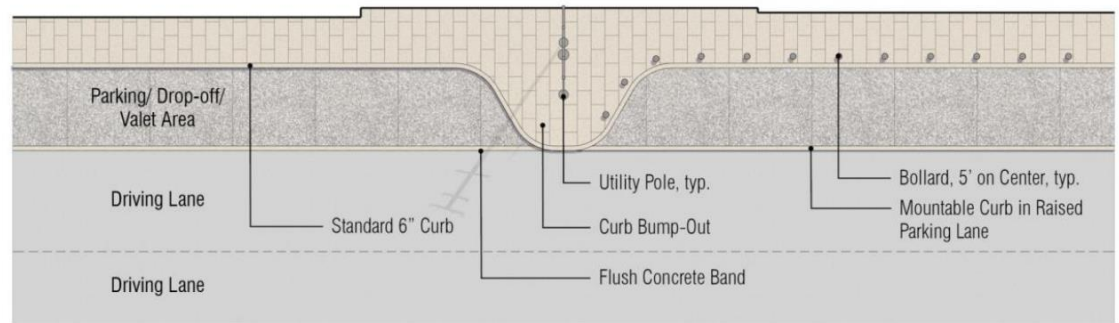
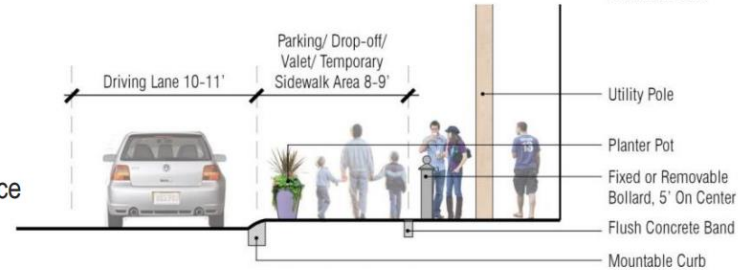
The screenshot shows the Howard County website interface. At the top, there is a search bar and navigation links. The main content area is titled "Ellicott City Watershed Master Plan" and includes a "What's New!" section with a link to "Please visit ECfloodrecovery.org for information on the 2018 flood recovery effort." Below this is an "Overview" section with a "Schedule" and "Plan Background" link. A "Public Workshops and Outreach" section lists dates from November 2017 to May 2017. A "Staff Contacts" section lists several individuals with their titles and email addresses. At the bottom, there is a "Historic Town" logo and a photo of a community meeting.

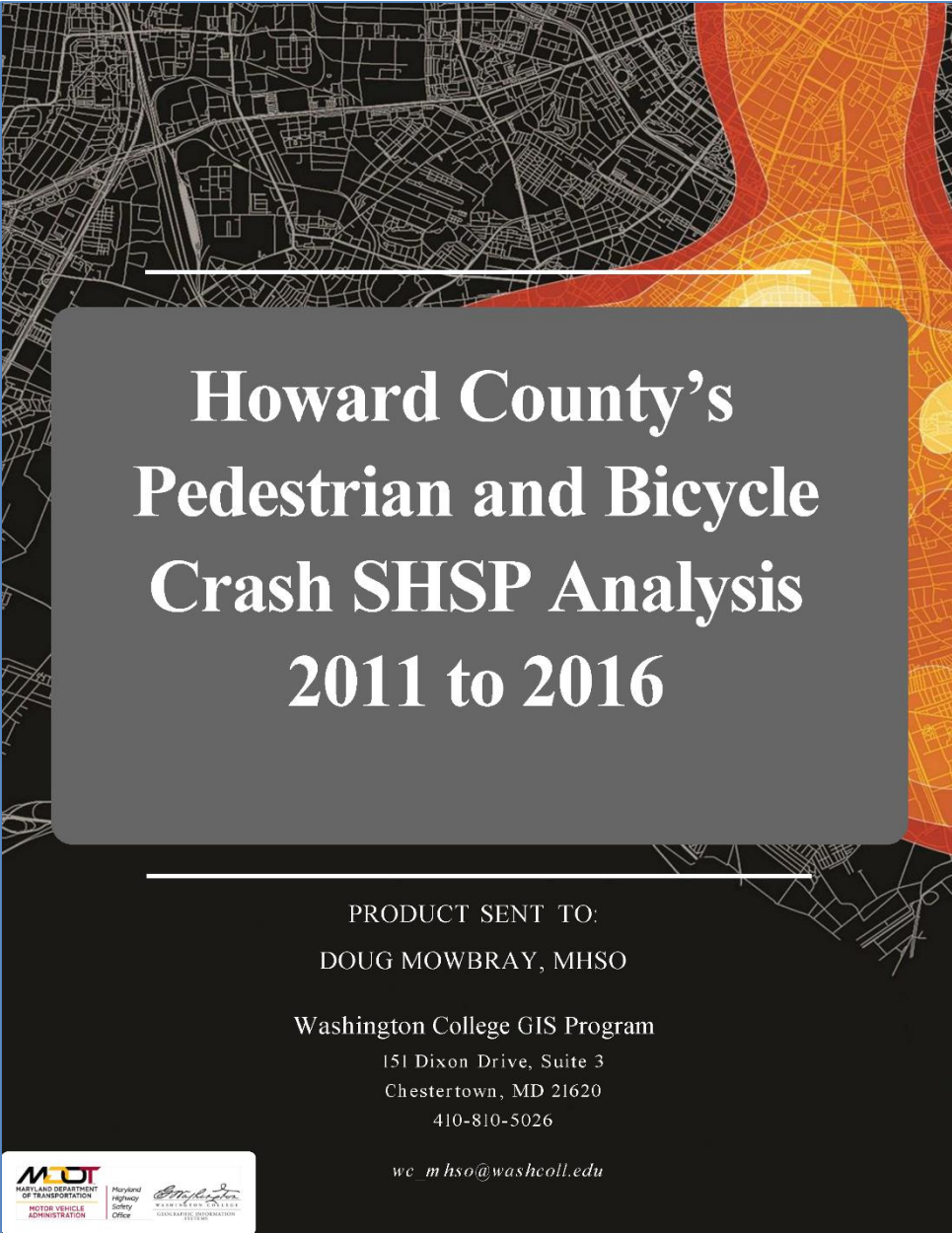
Main St Streetscape

Mountable Curb Parking Lane



Mountable Curb Flexible Event Space





Howard County's Pedestrian and Bicycle Crash SHSP Analysis 2011 to 2016

PRODUCT SENT TO:
DOUG MOWBRAY, MHSO

Washington College GIS Program
151 Dixon Drive, Suite 3
Chestertown, MD 21620
410-810-5026

wc_mhso@washcoll.edu



Howard County's SHSP Pedestrian and Bicycle Crash Analysis 2011 to 2016

This product was sent to:

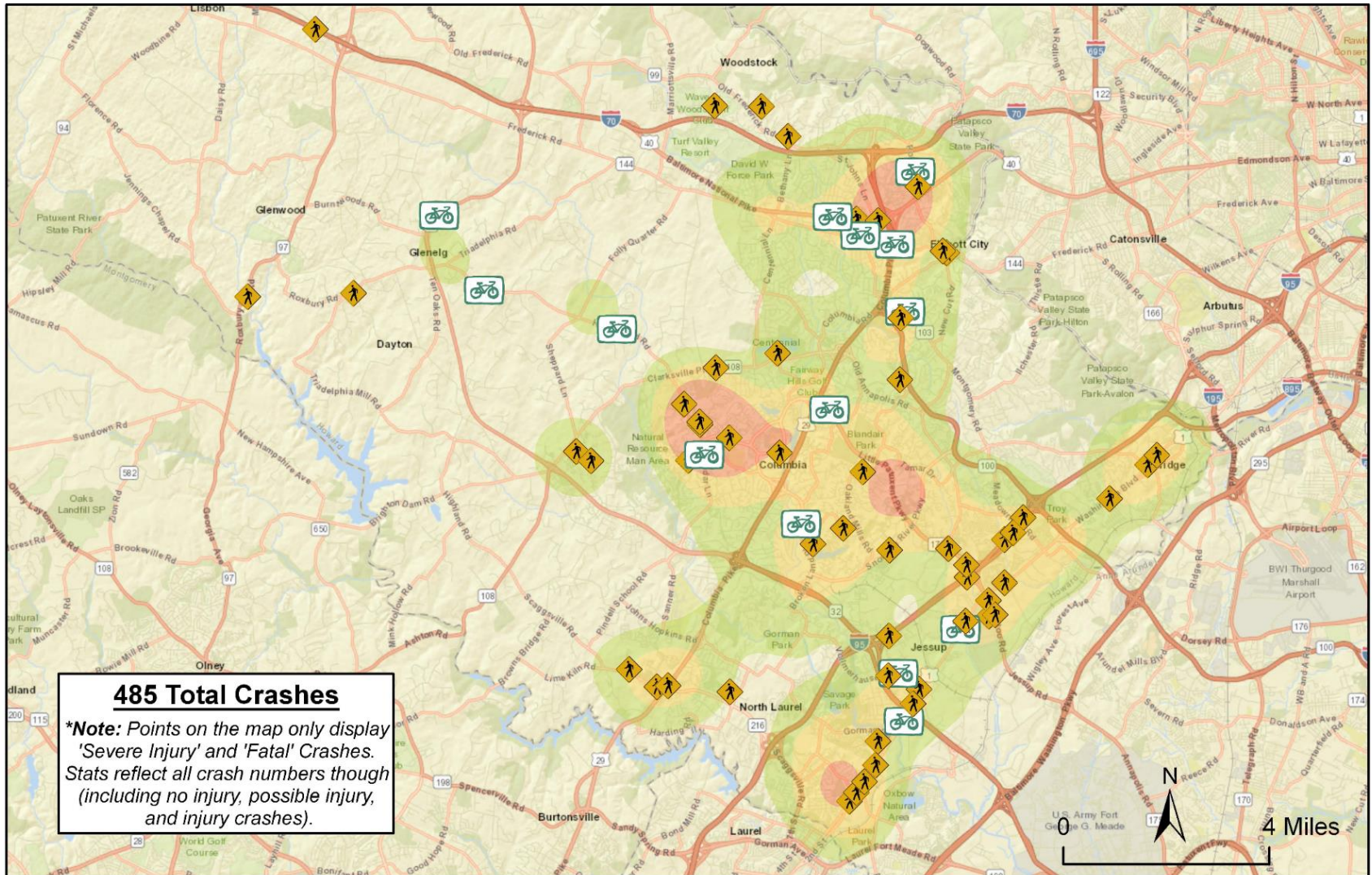
Doug Mowbray

Maryland Highway Safety Office

Executive Summary

This is an analysis on pedestrian and bicycle crashes in Howard county from 2011 to 2016. There were a total of 485 crashes that involved a pedestrian or bicyclist from 2011 to 2016. Pedestrian crashes totaled 362 and bicyclist crashes totaled 123. Tuesday at 1500 was the top day/time that these crashes occurred, totaling 11 crashes. Route 1 had the most pedestrian and bicycle crashes, totaling 32 crashes.

Howard's SHSP Pedestrian/Bicycle Crash Analysis 2011 to 2016



Time	0000	0100	0200	0300	0400	0500	0600	0700	0800	0900	1000	1100	1200	1300	1400	1500	1600	1700	1800	1900	2000	2100	2200	2300	Total
Sunday	0	2	2	0	0	1	0	0	2	3	1	2	1	3	3	4	3	2	3	2	0	0	1	3	38
Monday	1	0	2	0	0	1	2	0	2	2	3	2	3	4	6	5	9	8	8	4	3	2	0	1	68
Tuesday	1	0	0	0	2	1	2	3	2	1	6	2	3	5	6	11	6	6	6	7	6	3	4	1	84
Wednesday	0	1	0	0	1	4	3	4	1	4	3	4	2	2	2	4	5	4	4	9	7	3	2	0	69
Thursday	0	0	0	0	0	1	3	2	4	6	2	4	4	4	7	2	1	9	4	9	2	3	3	2	72
Friday	2	1	1	0	1	1	3	2	4	5	1	1	3	6	6	4	5	4	2	4	4	10	4	3	77
Saturday	0	2	0	1	0	1	3	2	2	4	5	8	8	7	3	3	2	6	1	2	3	7	2	5	77
Grand Total	4	6	5	1	4	10	16	13	17	25	21	23	24	31	33	33	31	39	28	37	25	28	16	15	485

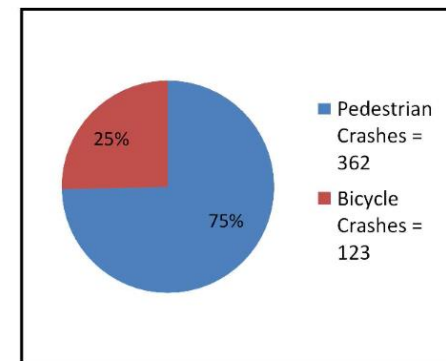
Top Routes Crashes Occurred

RT 1 had 32 crashes
 LPP had 14 crashes
 RT 95 had 9 crashes
 RT 108 had 8 crashes
 RT 103 had 8 crashes

Pedestrian and Bicycle Crash Severity

Severity	2011	2012	2013	2014	2015	2016	Total
No Injury	8	8	9	4	6	12	47
Possible Injury	22	25	23	10	9	25	114
Injury	40	41	39	31	44	38	233
Severe Injury	14	2	18	16	8	16	74
Fatal	0	1	2	2	3	9	17
Total	84	77	91	63	70	100	485

Pedestrian and Bicycle Crashes



Maryland Highway Safety Office



Source: State Highway Administration, Washington College GIS Program

Pedestrian Crashes
 Bicycle Crashes

Crash Hotspots

Low

Medium

High