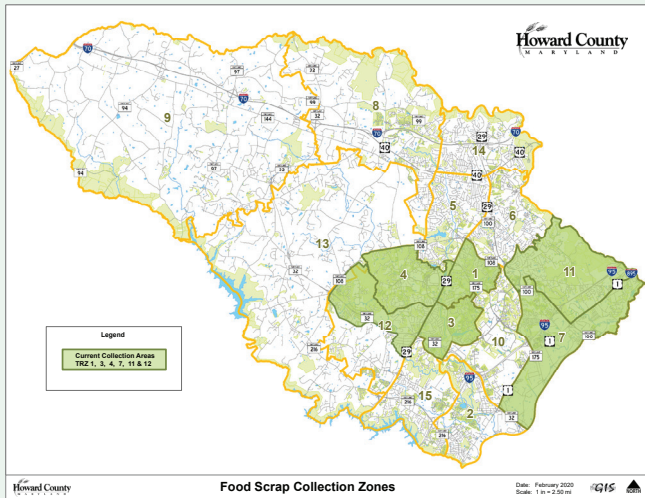


Howard County Food Scrap and Yard Trim Composting Program



Growing to Better Service Our Community

Built to new regulatory standards for odor and run-off control, the Expanded Composting Facility at Alpha Ridge Landfill processes yard trim and food scraps, manufacturing compost. After the completion of a \$5.5 million expansion, our facility is better equipped to service a greater area of the County.

Howard County estimates that 1200 tons/year of food scraps are diverted from the waste stream as a result of the composting program.

Our weekly curbside food scrap collection is currently available to 30,000 households.



Food scraps and compostable lunch trays are collected at 7 schools participating in the food scrap program, helping the schools increase their recycling rates.

Benefits of Food Scrap and Yard Trim Recycling:

Saves Money

- The cost of processing food scrap and yard trim material at Alpha Ridge Landfill is less (\$29) than the cost of disposing (\$46) residential household waste in a landfill. Foods scraps that are ground in garbage disposals and sent through the sanitary sewer system for processing are almost ten times as expensive to remove.
- Estimates show that U.S. families dispose of about \$2,275 worth of food every year.

Protects the Environment

- Potential to reduce household waste stream by 25%.
- Reduces greenhouse gases created when food scraps decompose in landfills and produce methane.

Benefits Local Economy

- Creates a valuable soil amendment and jobs. Studies show that composting creates twice as many jobs as landfills and four times as many jobs as disposal by incineration.

Recycle	Trash	Food Scraps
Milk Cartons & Juice Boxes	Plastic Utensils, Straws & Styrofoam™	Leftover Food Scraps (NO LIQUIDS)
Plastic Bottles & Containers	Plastic Bags	Lunch Trays
Cans & Aluminum Foil	Food & Drink Pouches	
Yogurt Cups	Foil Type Seals	Paper Towels & Napkins
Cardboard & Paper	Chip Bags and Wrappers	

See the Composting program in action! 

Our Composting Process: How it Works



Residents in the **Feed the Green Bin** areas are provided a separate cart for food scraps (fruits, vegetables, meat, grains, etc.), compostable items (tea bags, paper towels, pizza boxes, etc.) and yard trim.

Howard County residents **outside** of the **Feed the Green Bin** area can bring materials to Alpha Ridge Landfill.

Material is put through a grinder and wet thoroughly.



The ground material is placed in bunkers. Our state-of-the-art negative aeration system and biofilter ensures odors, water and wastewater are managed while still manufacturing a quality product.

Piles are covered and turned regularly. The piles are carefully monitored to ensure the composting process meets established standards.

105 days later the finished product is cured and screened. It is ready for lawns, gardens, farms and many other uses.



Our products, including custom soil blends are available for purchase by residents, landscapers and wholesale customers. Delivery available.

HoCoGro Compost	HoCoGro Mulch	HoCoGro Topsoil
\$23/yd ³	\$21/yd ³	\$25/yd ³

Made Locally  Spread Locally