

# MD 32

# Alternate Bike Route Study

Maryland Department of Transportation State Highway Administration

Howard County Office of Transportation

Developed by RK&K

June 16, 2020

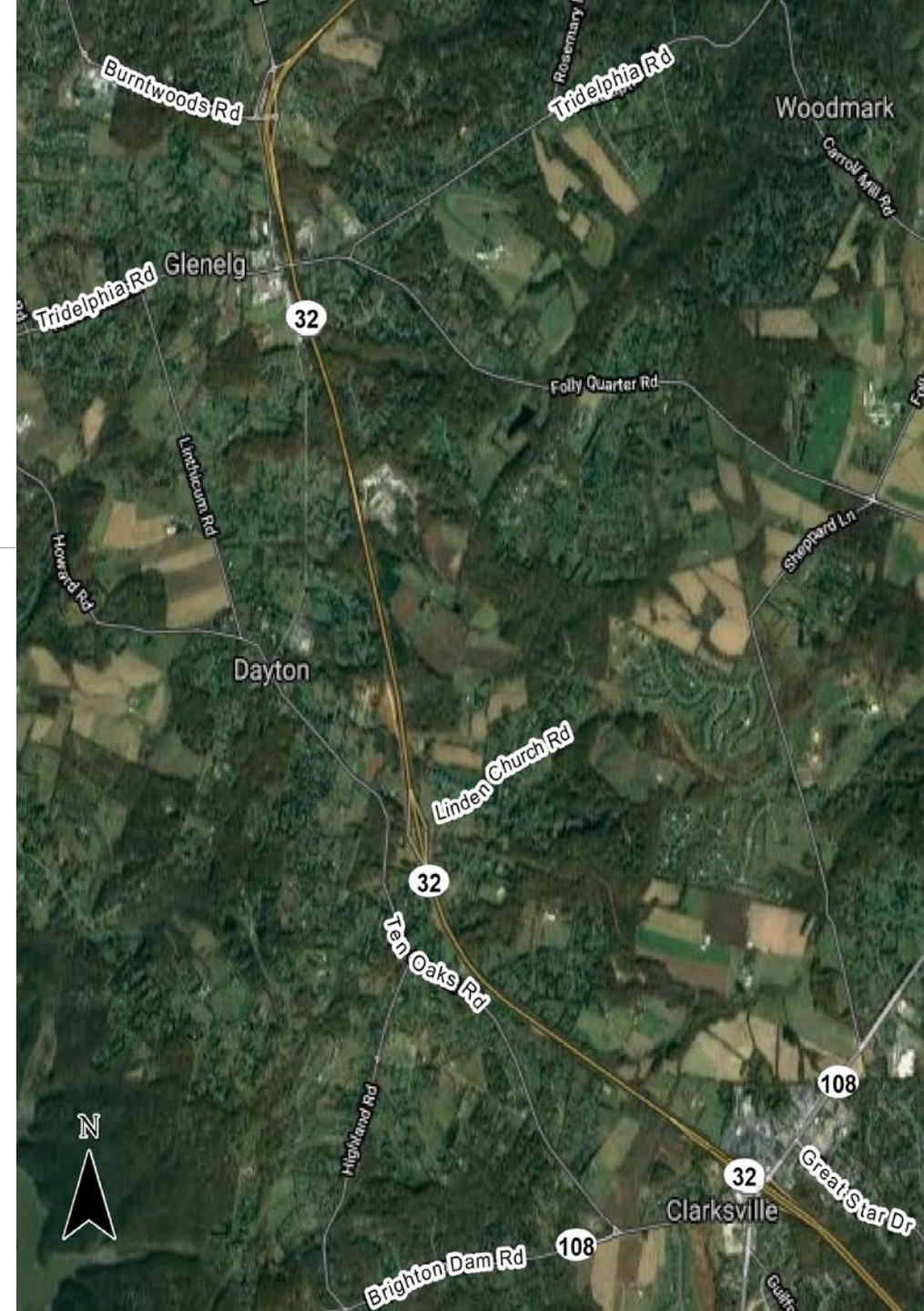
---



# MD 32 Alt Bike Study Objectives

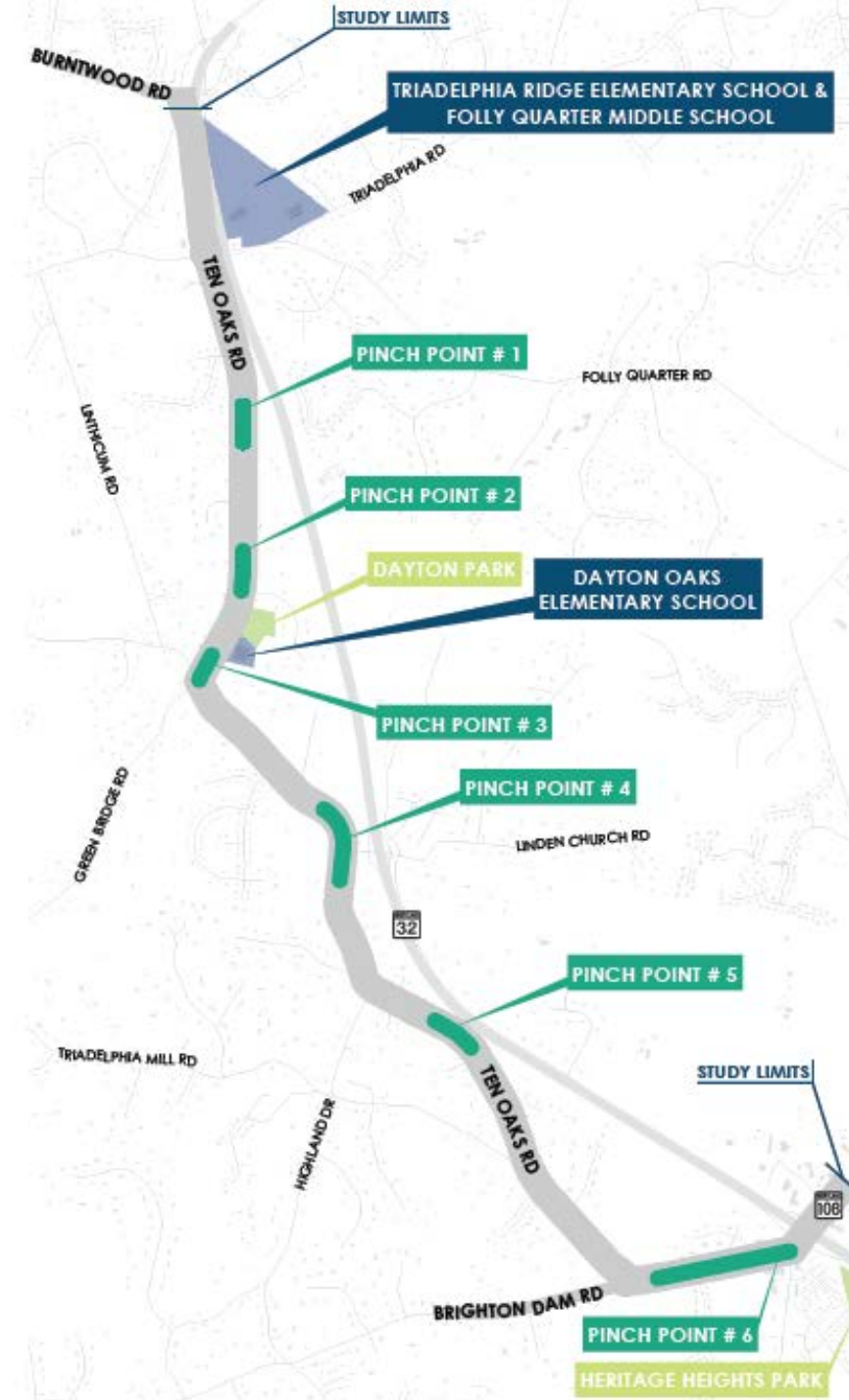
---

- Identify bicyclist user types along the corridor
- Address operational obstacles with safe bicycle travel
- Minimize utility and right-of-way impacts
- Accommodate the Howard County Clarksville/River Hill Streetscape Study along MD 108



# MD 32 Alt Bike Study Study Area

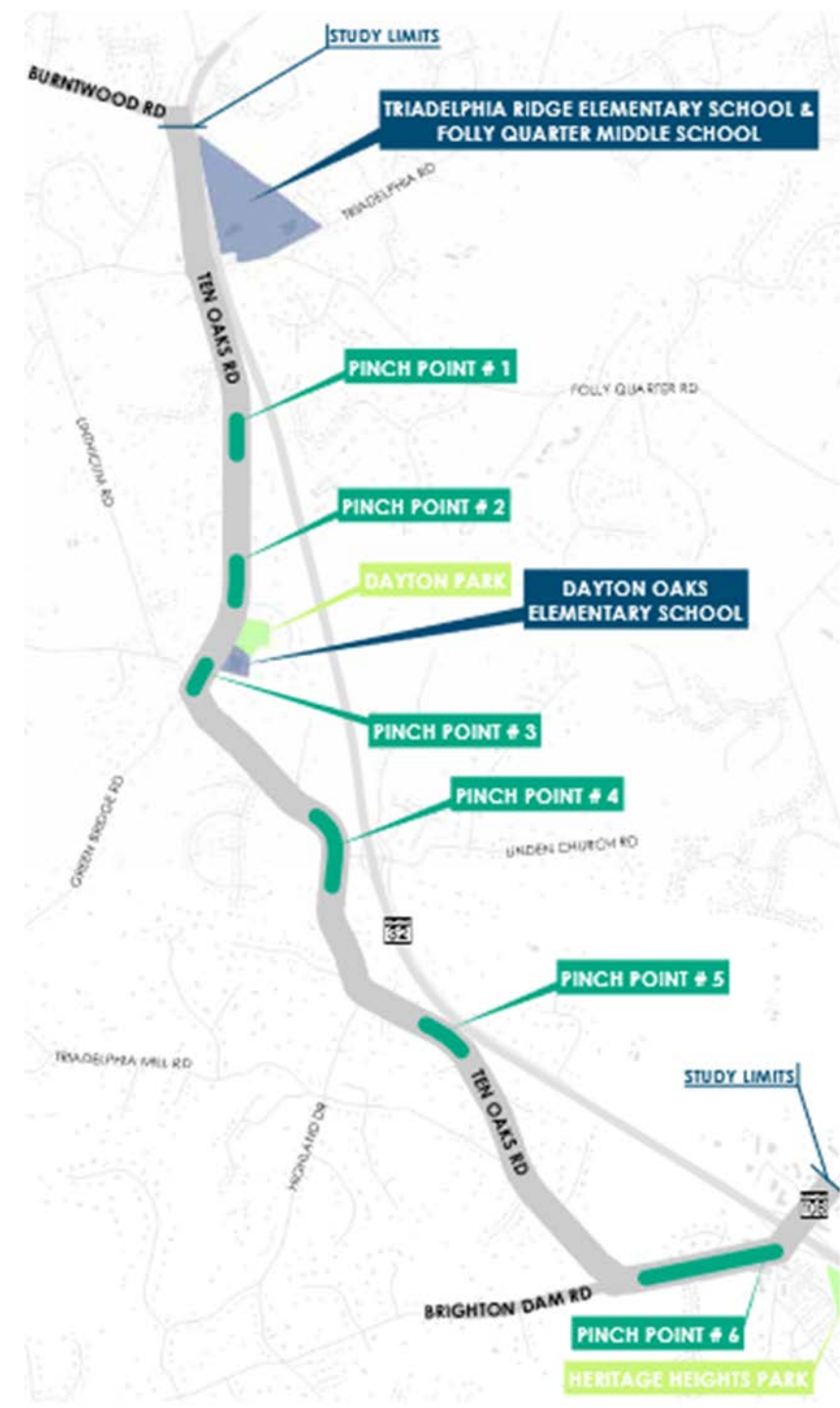
- Pinch Point 1 – West side between Rye River Dr & Oakwood Overlook Ct
- Pinch Point 2 – West side between Oakwood Overlook Ct & Rutherford Way
- Pinch Point 3 – Both sides between Dayton Oaks Park School & Green Bridge Rd
- Pinch Point 4 – Both sides between Green Bridge Rd & Aerie Ct
- Pinch Point 5 – West side between Talon Ct & Smallwood Ct
- Pinch Point 6 – Both sides between Brighton Dam Rd & MD 108





# MD 32 Alt Bike Study Opportunities & Constraints

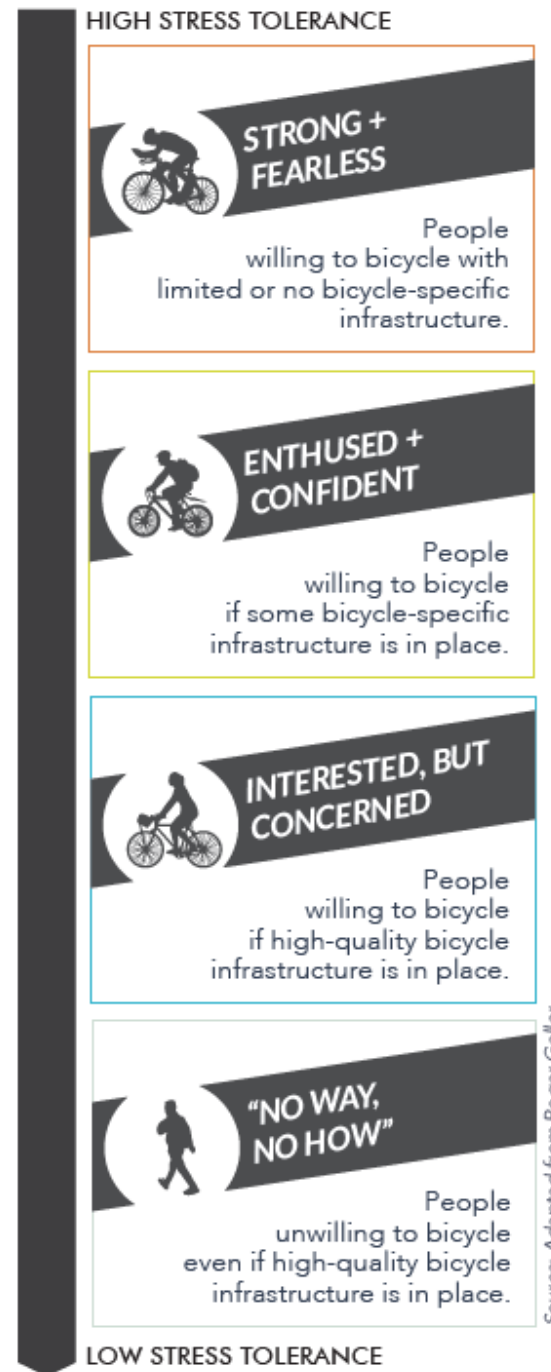
- Related Studies
- Natural Resources
- Stormwater Management
- Utilities
- Right-of-Way



# MD 32 Alt Bike Study Concept Overview

## *Bicycle User Types*

- Enthused + Fearless
- Interested, But Concerned

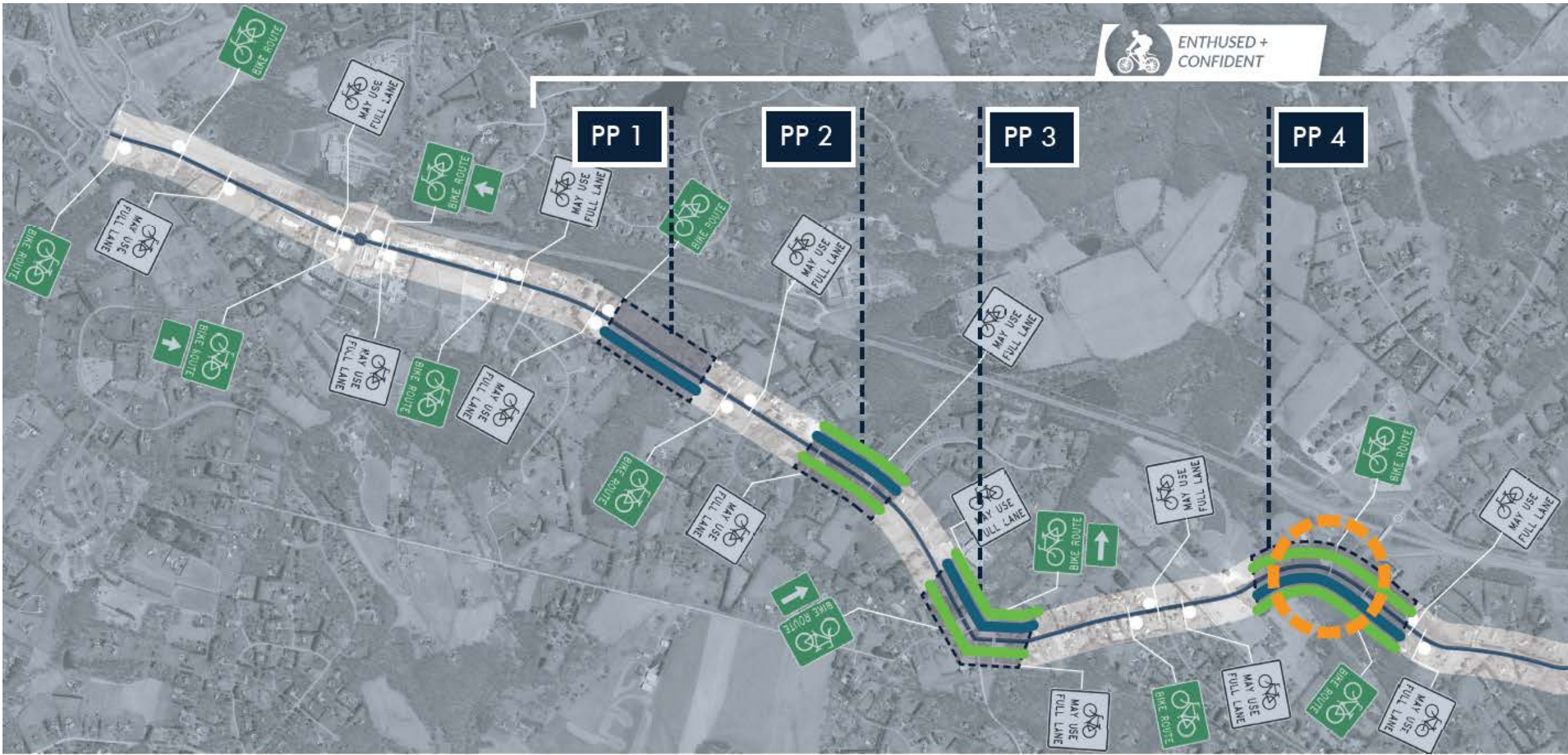


## *Concepts*

- Alternative A Route Signage
- Alternative B Pinch Points 1 - 5 Improvements
- Alternate C Pinch Point 6 Shared Use Path

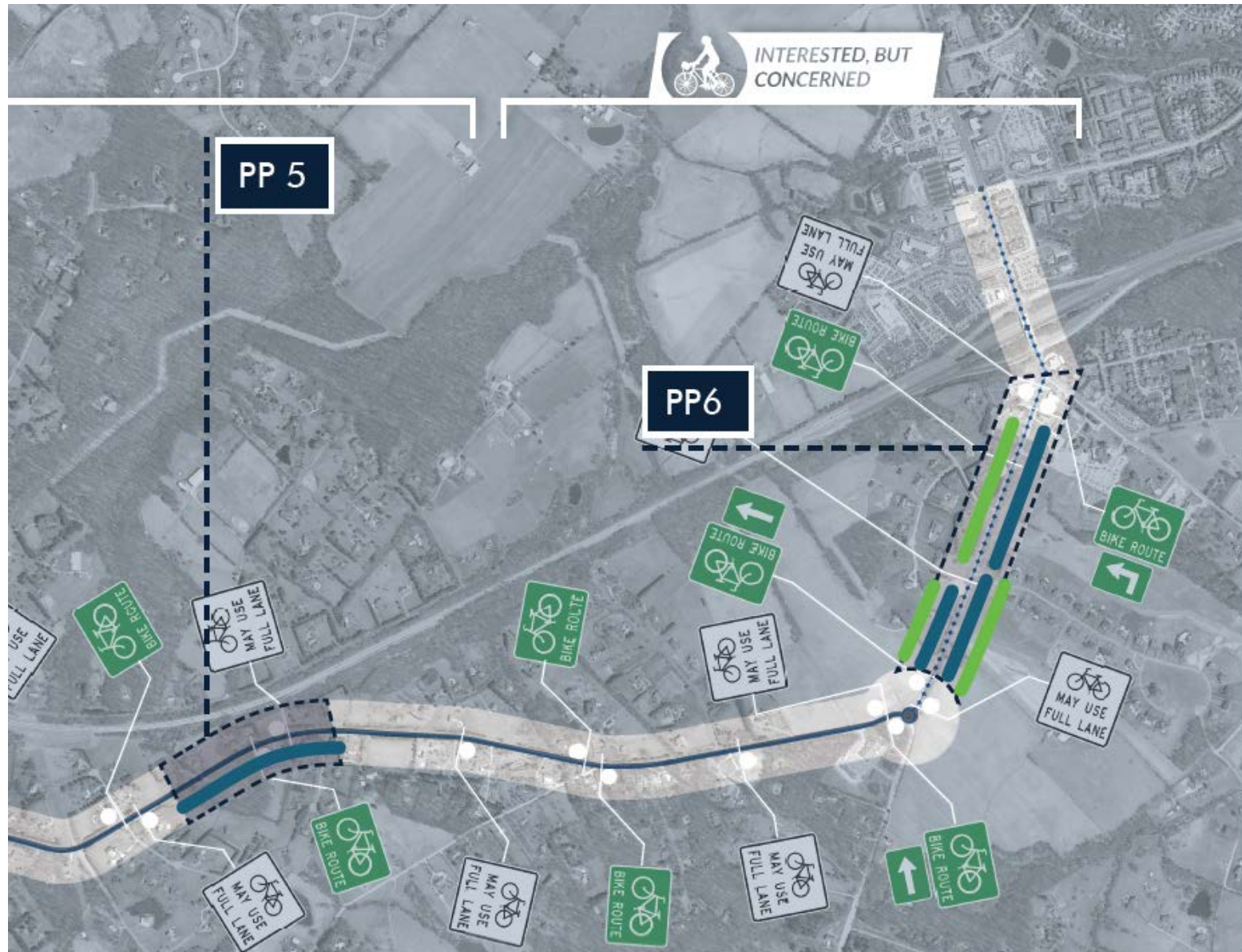


# MD 32 Alt Bike Study Pinch Point Concepts Overview





# MD 32 Alt Bike Study Pinch Point Concepts Overview



## Pinch Point Criteria:

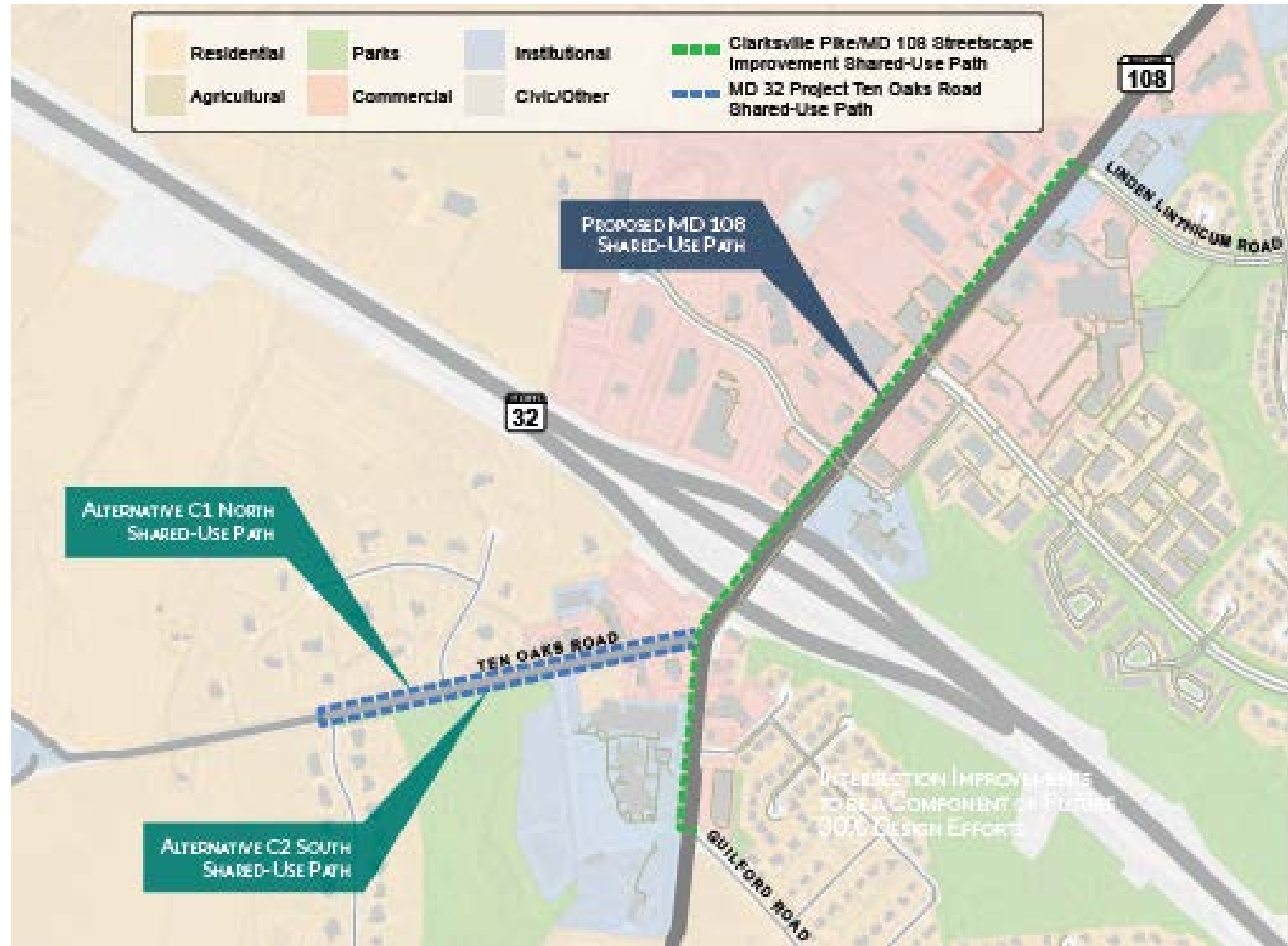
- Narrow Shoulder
- Turn Lane Conflict
- Steep Road Grade
- Steep Slope Along a Side of the Roadway
- Limited Sight Distance

## Impacts Evaluated:

- Safety
- Tree Impacts
- Utility Impacts
- Cost
- Traffic Impacts
- Parcel Impacts

# MD 32 Alt Bike Study Implementation Strategies

1. Signage
2. Prioritize Improvements
3. Pinch Point 6 SUP



MD 108 Improvements