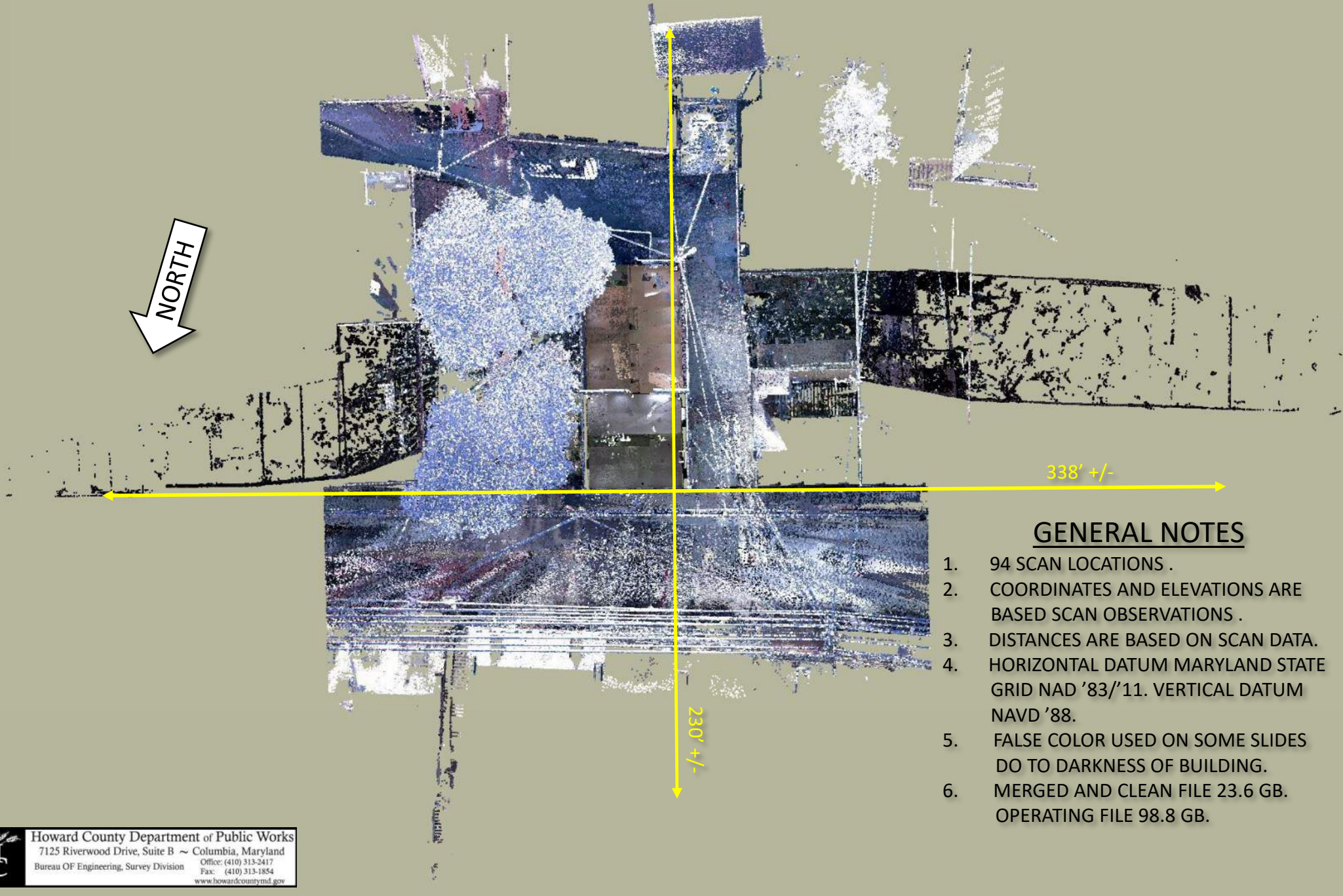


Attachment K
LIDAR Scan of 8069 Main Street

Prepared by: Howard County Department of Public Works,
Bureau of Engineering, Survey Division

Scan Dates: November 20 and 21, 2019
11 Pages

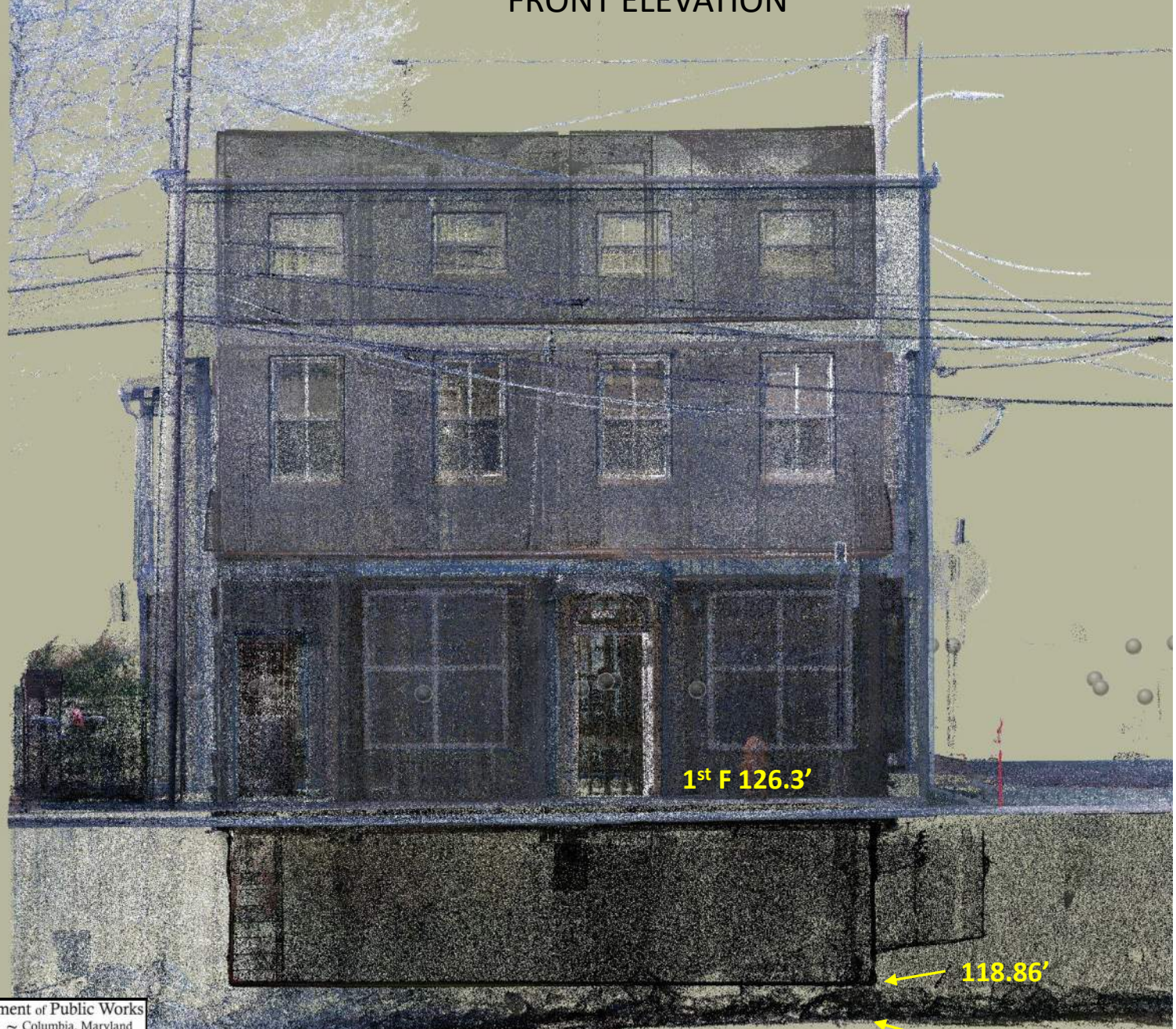
SCAN REPORT - 8069 MAIN STREET NOVEMBER 20 & 21, 2019



GENERAL NOTES

1. 94 SCAN LOCATIONS .
2. COORDINATES AND ELEVATIONS ARE BASED SCAN OBSERVATIONS .
3. DISTANCES ARE BASED ON SCAN DATA.
4. HORIZONTAL DATUM MARYLAND STATE GRID NAD '83/'11. VERTICAL DATUM NAVD '88.
5. FALSE COLOR USED ON SOME SLIDES DO TO DARKNESS OF BUILDING.
6. MERGED AND CLEAN FILE 23.6 GB. OPERATING FILE 98.8 GB.

8069 MAIN STREET
FRONT ELEVATION



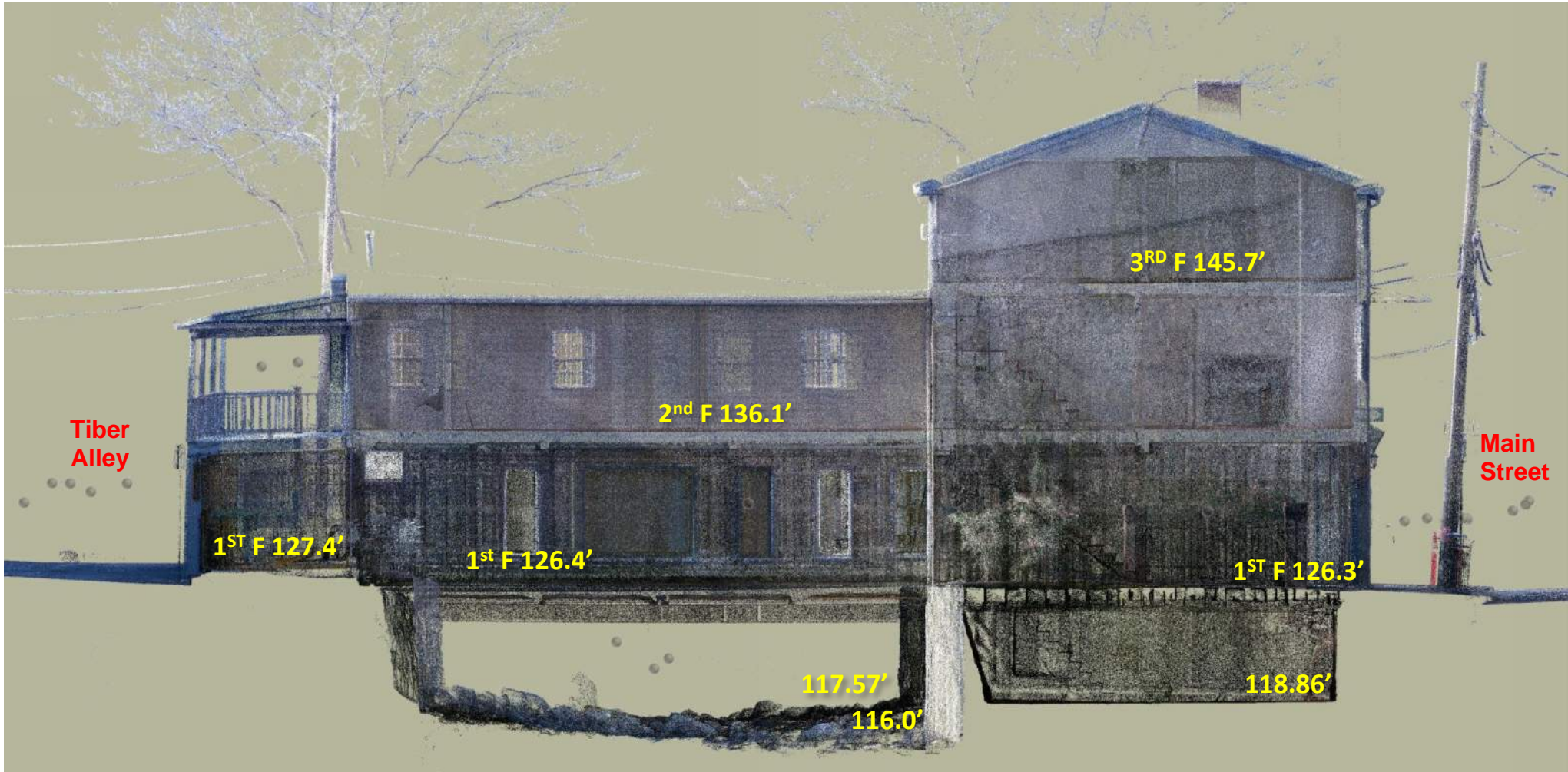
1st F 126.3'

118.86'

116.0'

117.57'

8069 MAIN STREET EAST SIDE ELEVATION



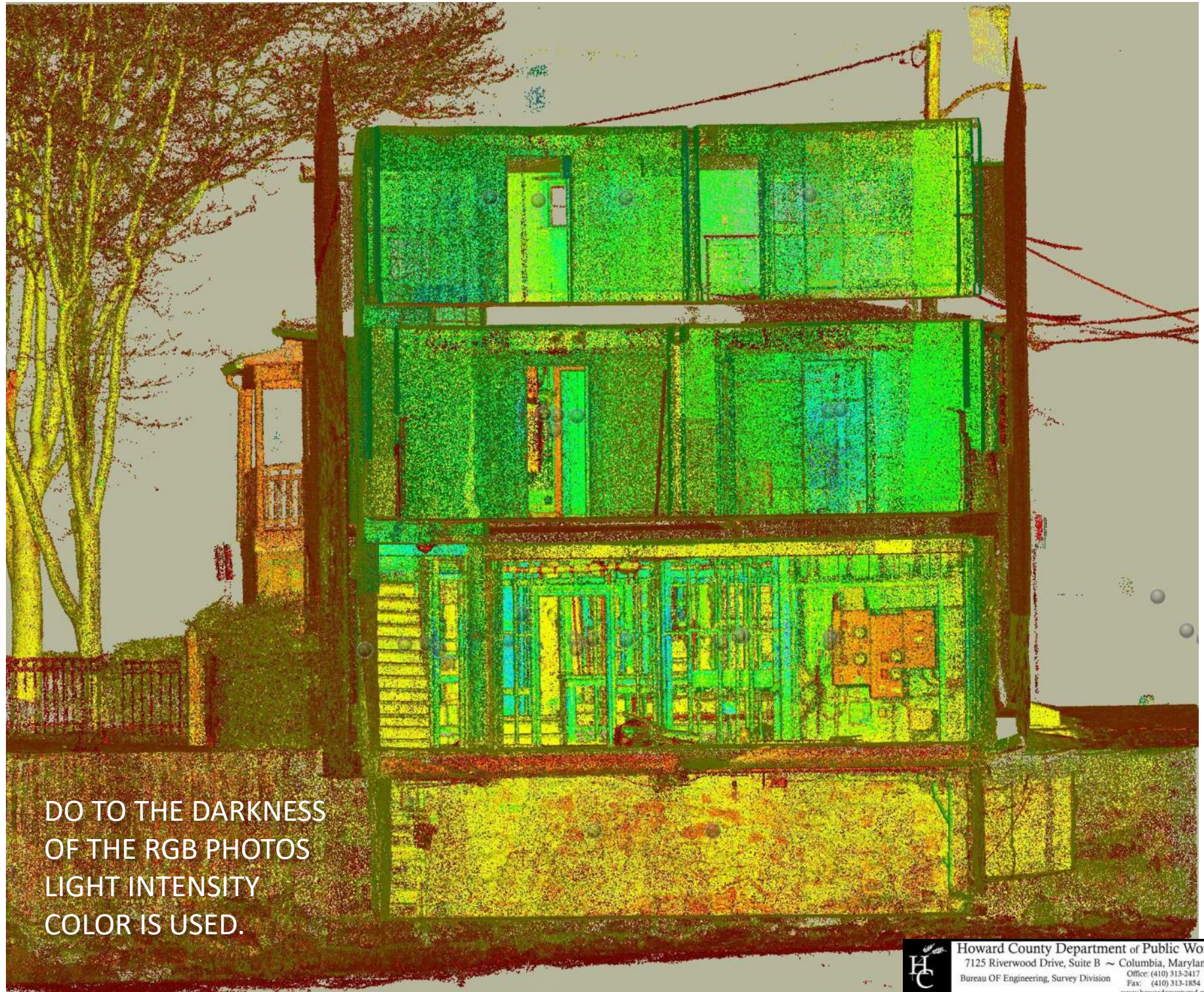
8069 MAIN STREET
BACK ELEVATION



8069 MAIN STREET WEST SIDE ELEVATION

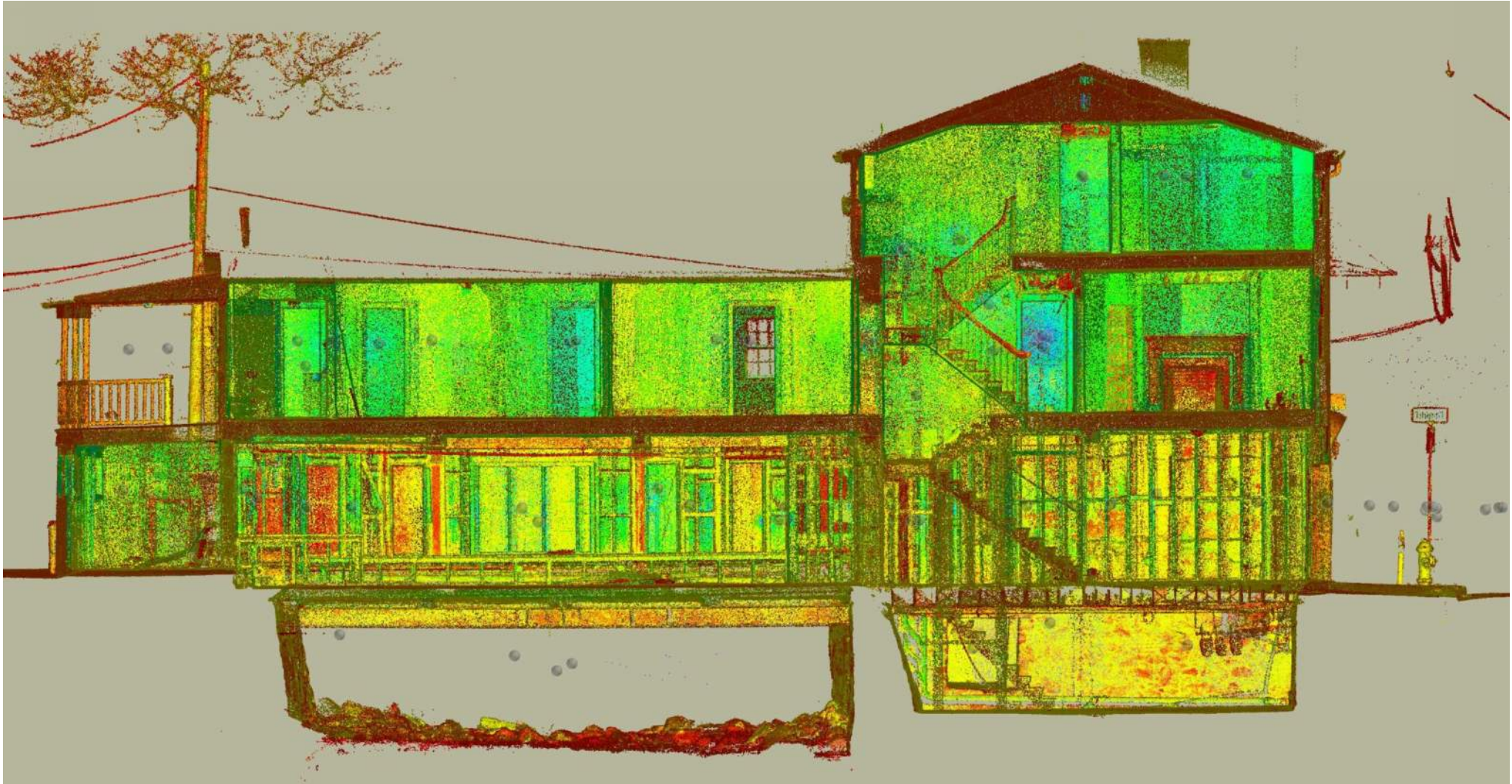


8069 MAIN STREET FRONT WALL OFF - ELEVATION



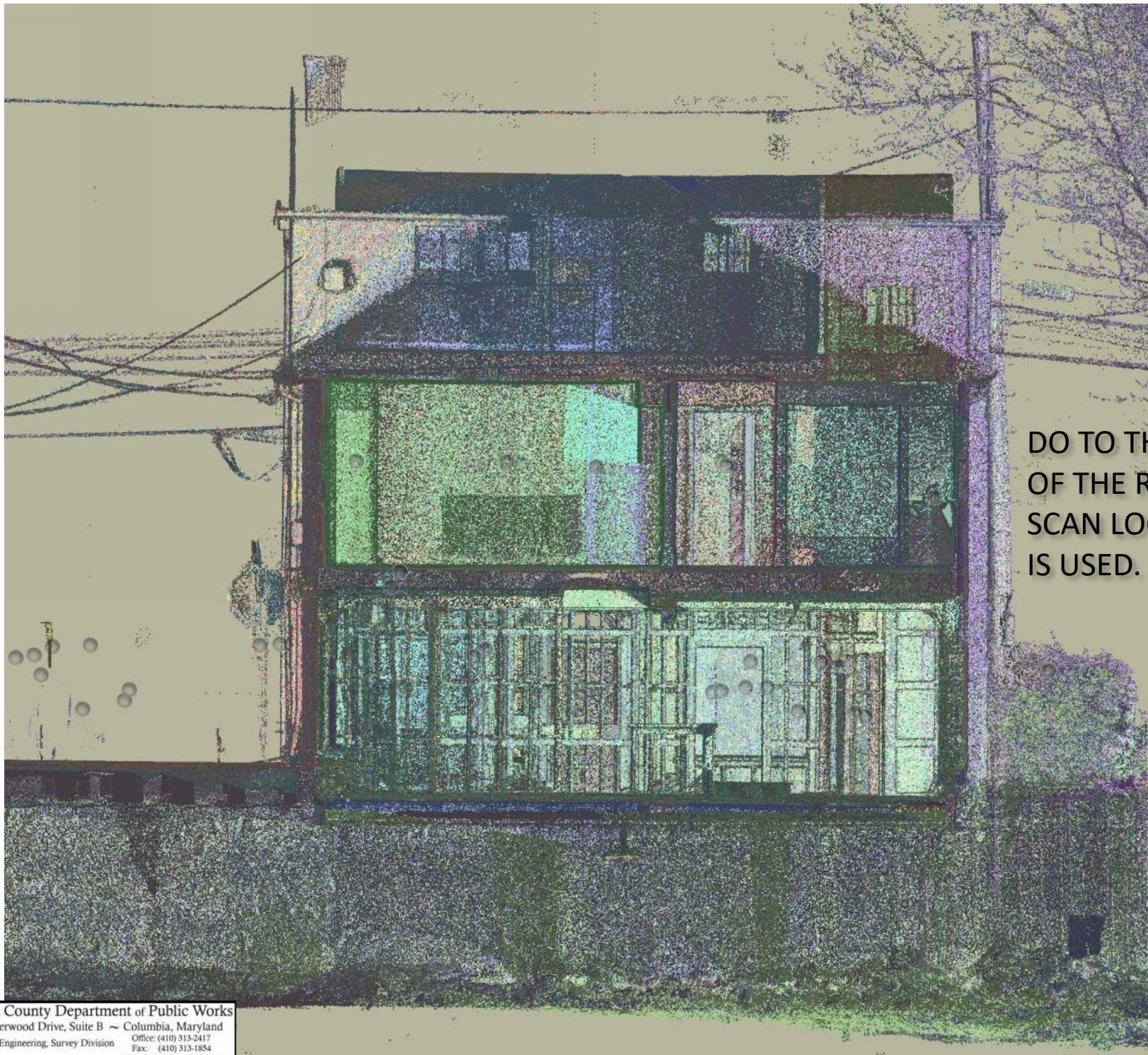
DO TO THE DARKNESS
OF THE RGB PHOTOS
LIGHT INTENSITY
COLOR IS USED.

8069 MAIN STREET EAST WALL OFF - ELEVATION



DO TO THE DARKNESS OF THE
RGB PHOTOS LIGHT INTENSITY
COLOR IS USED.

8069 MAIN STREET BACK ADDITION WALL OFF - ELEVATION



DO TO THE DARKNESS
OF THE RGB PHOTOS
SCAN LOCATION COLOR
IS USED.



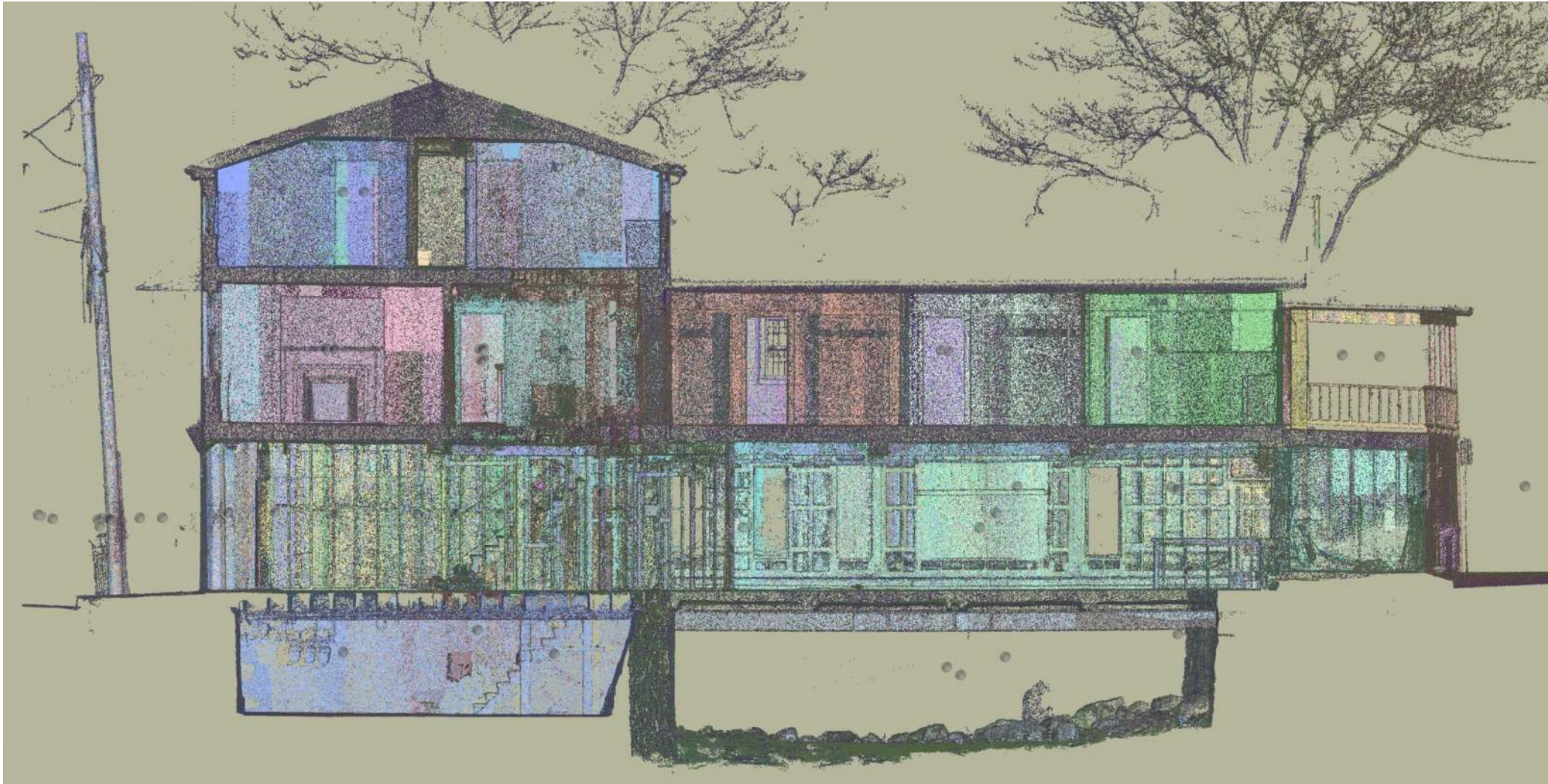
8069 MAIN STREET BACK ELEVATION – WALL OFF



DO TO THE DARKNESS
OF THE RGB PHOTOS
SCAN LOCATION COLOR
IS USED.



8069 MAIN STREET WEST WALL OFF ELEVATION



DO TO THE DARKNESS OF THE RGB
PHOTOS SCAN LOCATION COLOR IS
USED.

8069 MAIN STREET BASEMENT RELATED TO RIVER

