

MD 103/104/108 Corridor Study

Howard County Office of Transportation

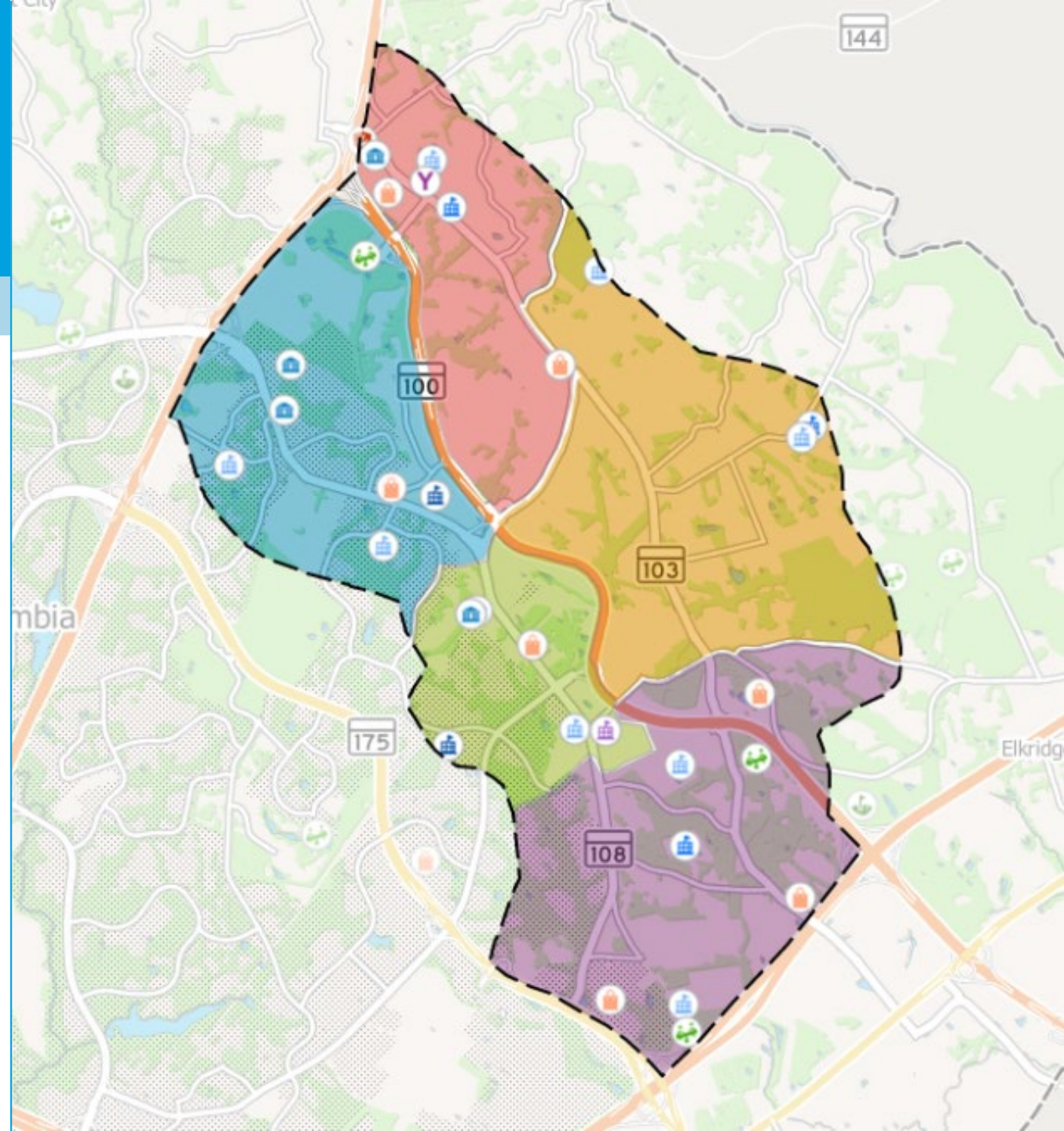
January 28, 2021

Meeting Will Begin Shortly



Why this corridor? Why now?

- Historical residential and commercial development pattern has led to a patchwork of communities that have sufficient internal transportation facilities but are not integrated at the corridor level.
- Need to identify and prioritize bicycle, pedestrian and traffic operations and safety improvements for implementation by County, SHA and developers as growth continues to occur in the corridor.



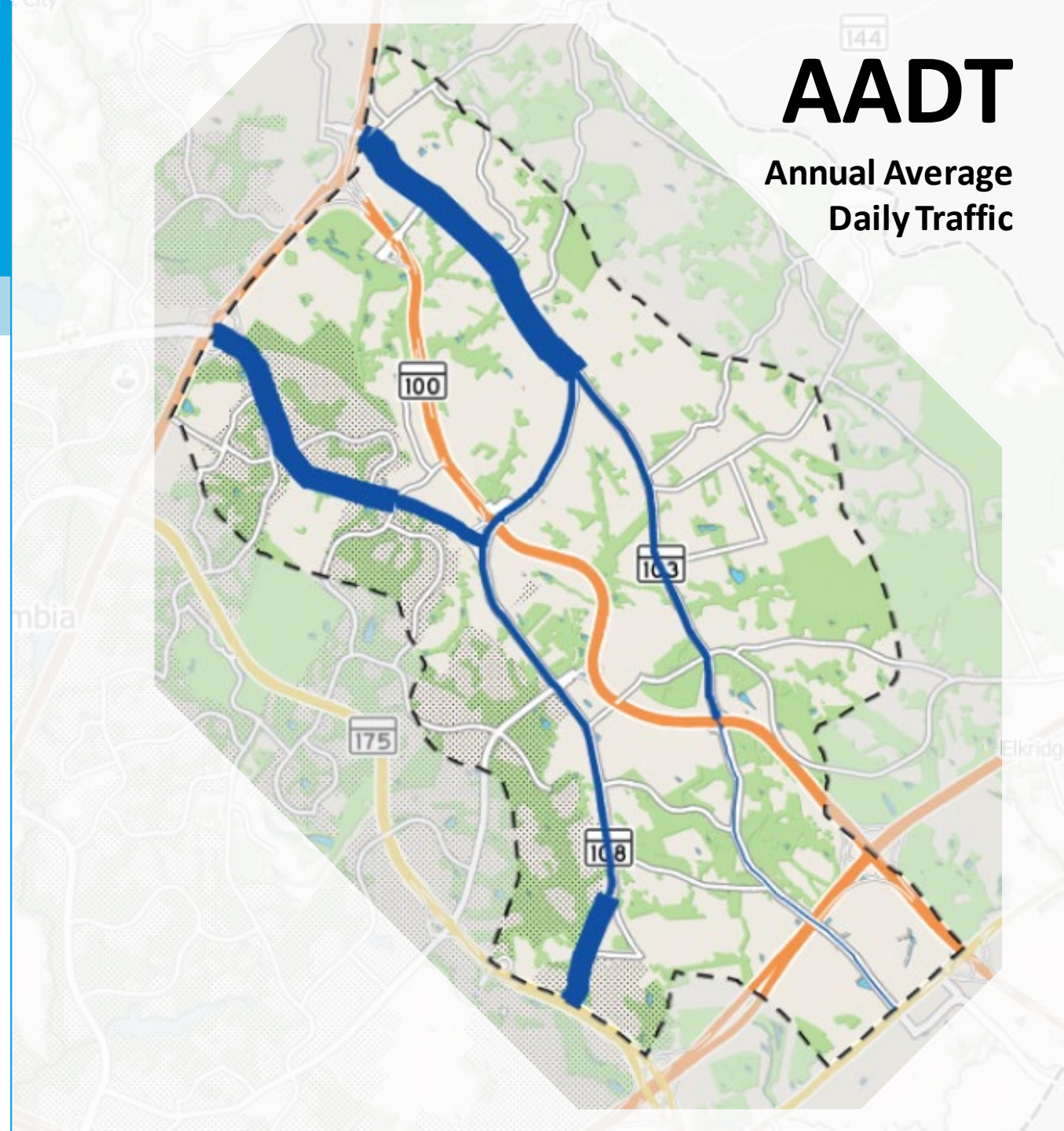
Goals for Meeting

- Introduce project and update on background work that has been performed.
- Share ideas to improve bicycle and pedestrian safety and connectivity
- Demonstrate web-tool and survey for public feedback.



Work to Date Traffic Operations and Safety

- Documenting traffic volumes and congestion hot spots.
- Identifying most significant crash locations.
- Developing improvement concepts.



Work to Date Traffic Operations and Safety

AM

Level of Service (Signalized Intersections)	Average Vehicle Delay at Intersection (seconds)
A	<10
B	>10 and <20
C	>20 and <35
D	>35 and <55
E	>55 and <80
F	>80

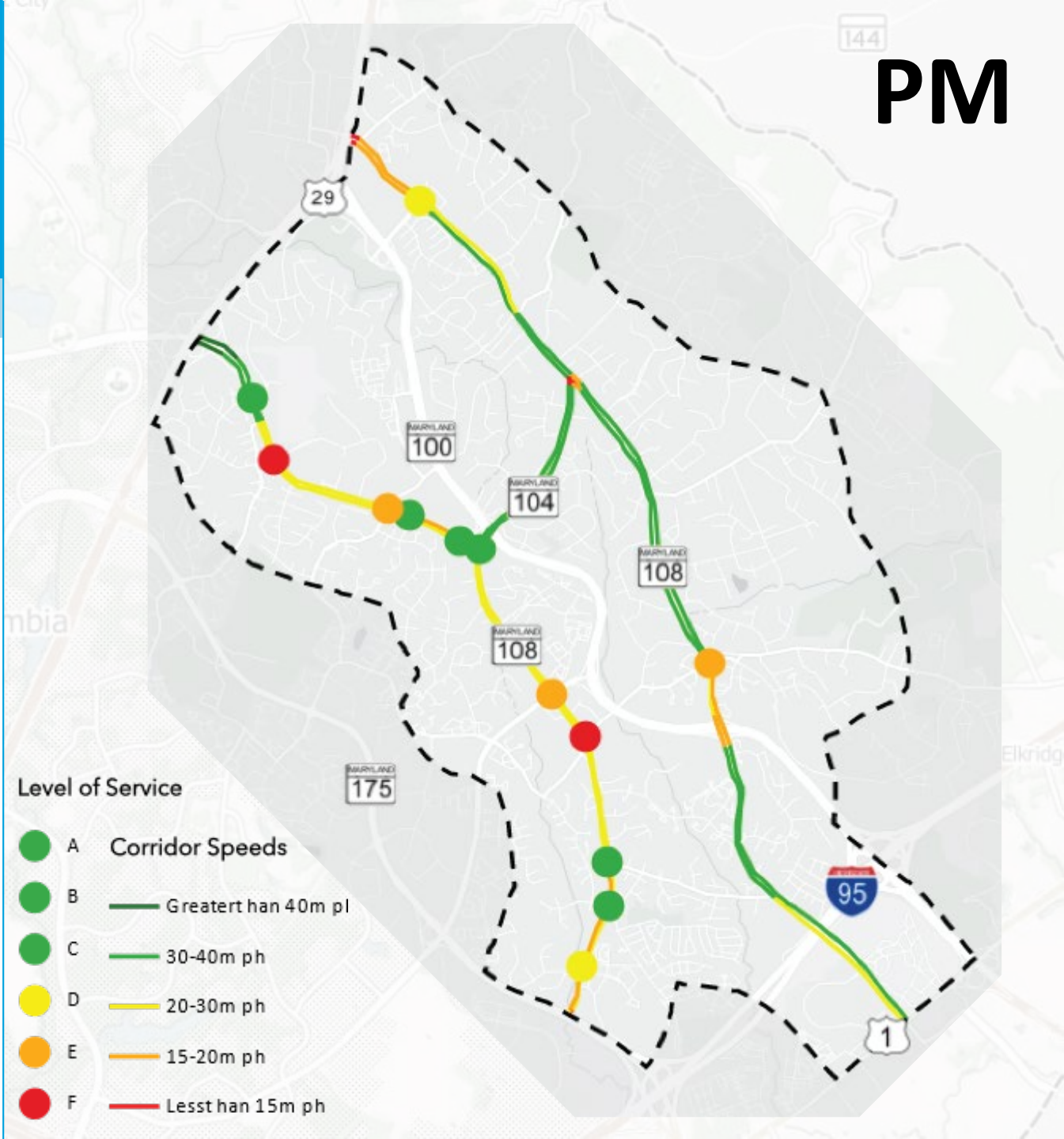
A		B		C	
	Free flow		Reasonably free flow		Stable flow
D		E		F	
	More restrictive movements for motorists		Delay to all motorists due to congestion		Complete congestion



Work to Date Traffic Operations and Safety

Level of Service (Signalized Intersections)	Average Vehicle Delay at Intersection (seconds)
A	<10
B	>10 and <20
C	>20 and <35
D	>35 and <55
E	>55 and <80
F	>80

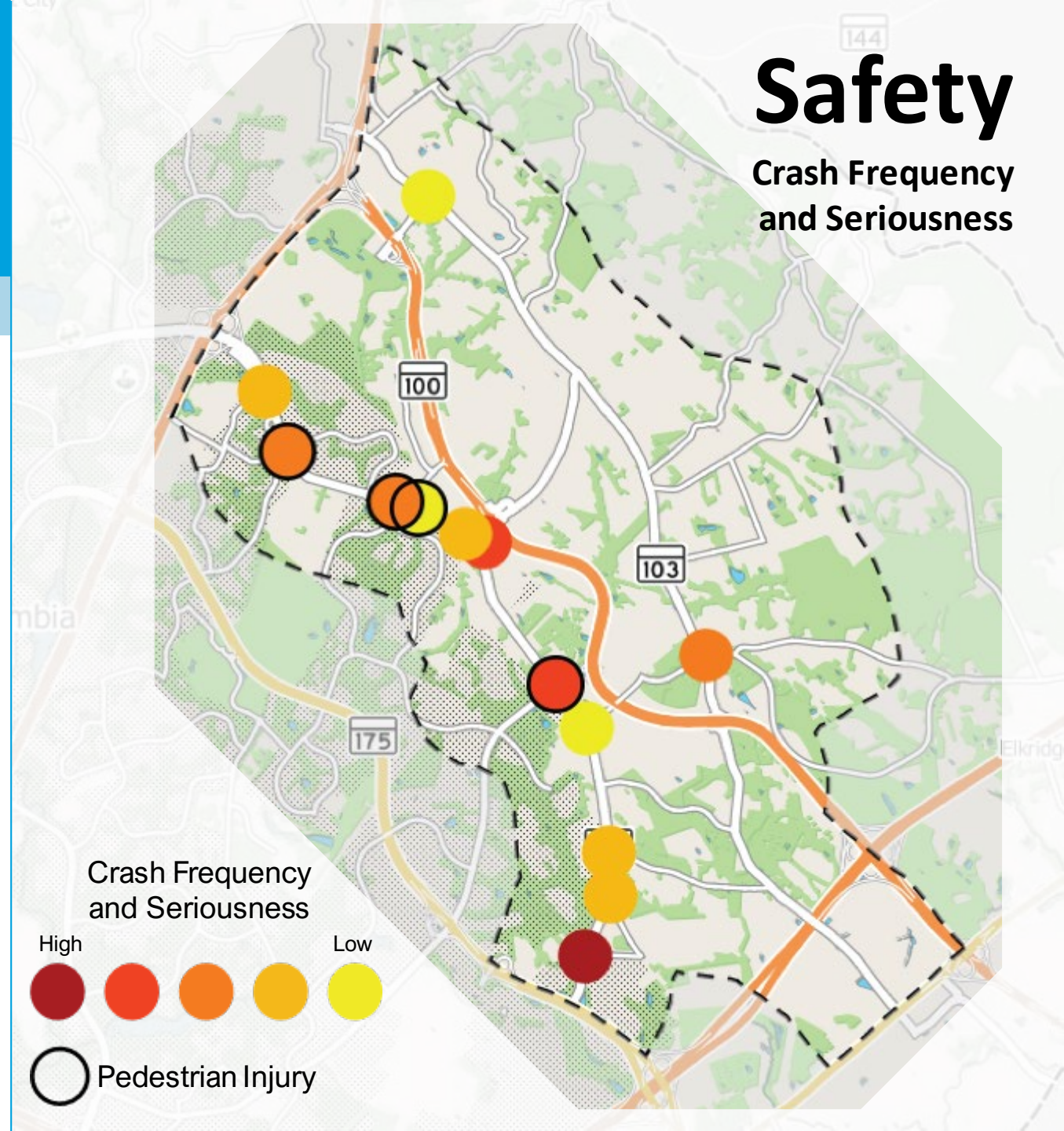
A		B		C	
D		E		F	



Work to Date

Traffic Operations and Safety

- Documenting traffic volumes and congestion hot spots.
- Identifying most significant crash locations.
- Developing improvement concepts.



Improvement Concepts Traffic Operations and Safety



1

Long Gate Parkway to US 29
Status: Design refinement and utility relocation ongoing



2

Old Montgomery Road to Brightfield Road
Status: Design ongoing



3

Red Branch Road to Phelps Luck Drive
Status: Concept Development



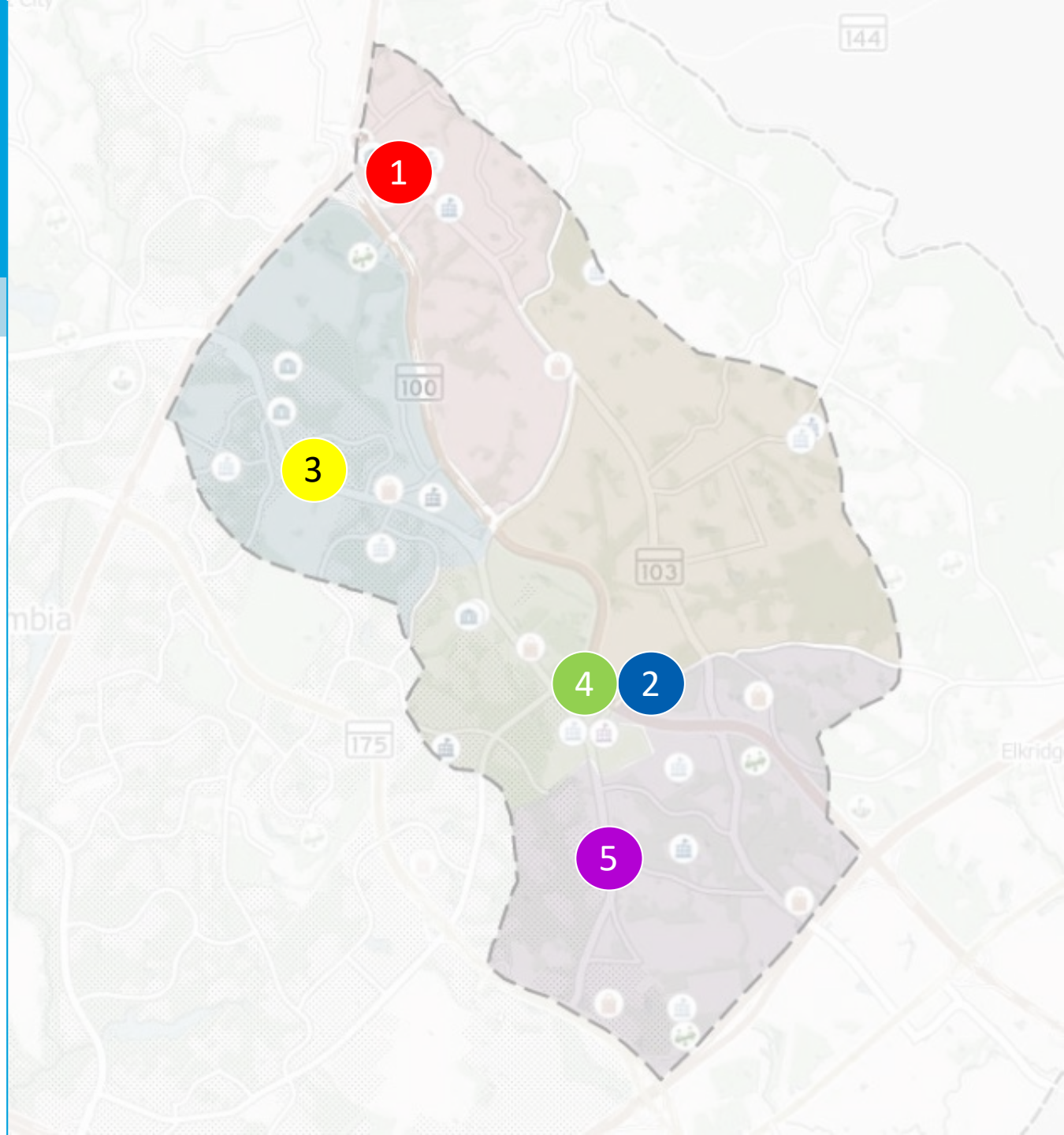
4

Snowden River Parkway at MD 100
Status: Concept Development



5

Lark Brown Road to Mayfield Avenue
Status: Concept Development



Improvement Concepts Traffic Operations and Safety



1

Long Gate Parkway to US 29
Status: Design refinement and utility relocation ongoing



2

Old Montgomery Road to Brightfield Road
Status: Design ongoing



3

Red Branch Road to Phelps Luck Drive
Status: Concept Development



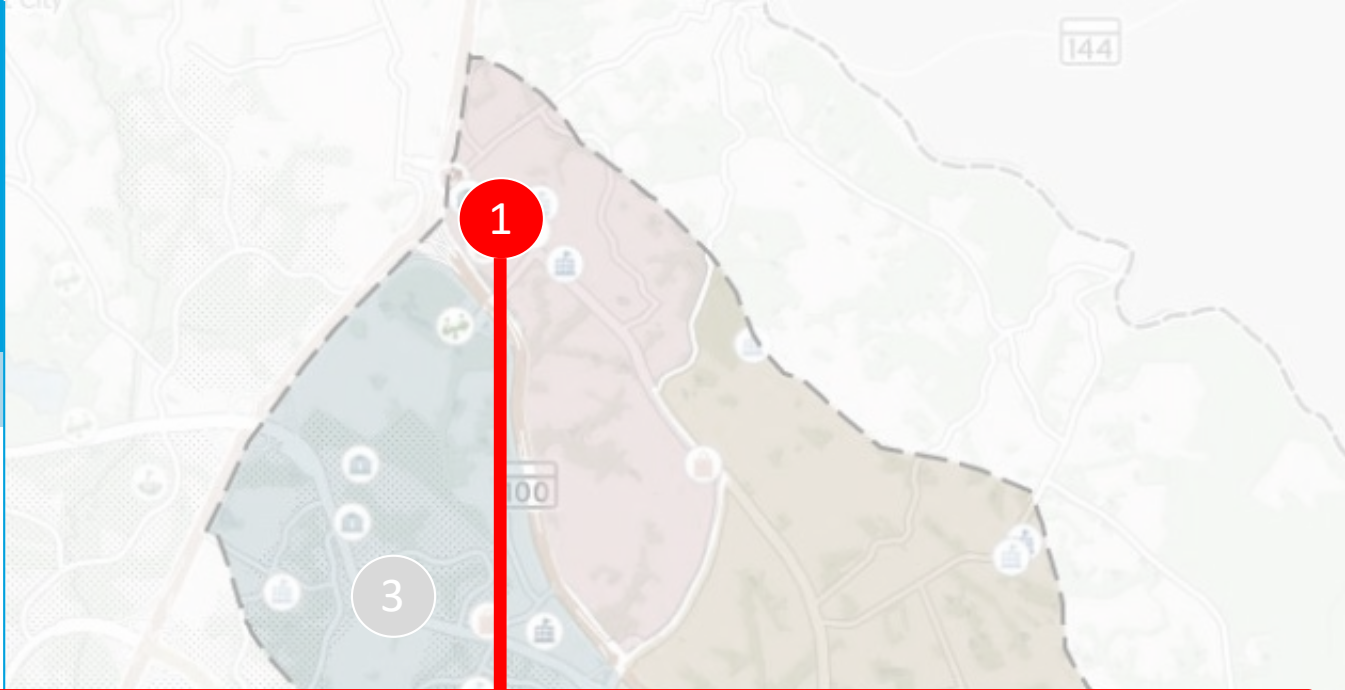
4

Snowden River Parkway at MD 100
Status: Concept Development



5

Lark Brown Road to Mayfield Avenue
Status: Concept Development



Improvement Concepts

MAR 10
MAR 10
MAR 10
MAR 10
MAR 10



Improvement Concepts Traffic Operations and Safety



1

Long Gate Parkway to US 29
Status: Design refinement and utility relocation ongoing



2

Old Montgomery Road to Brightfield Road
Status: Design ongoing



3

Red Branch Road to Phelps Luck Drive
Status: Concept Development



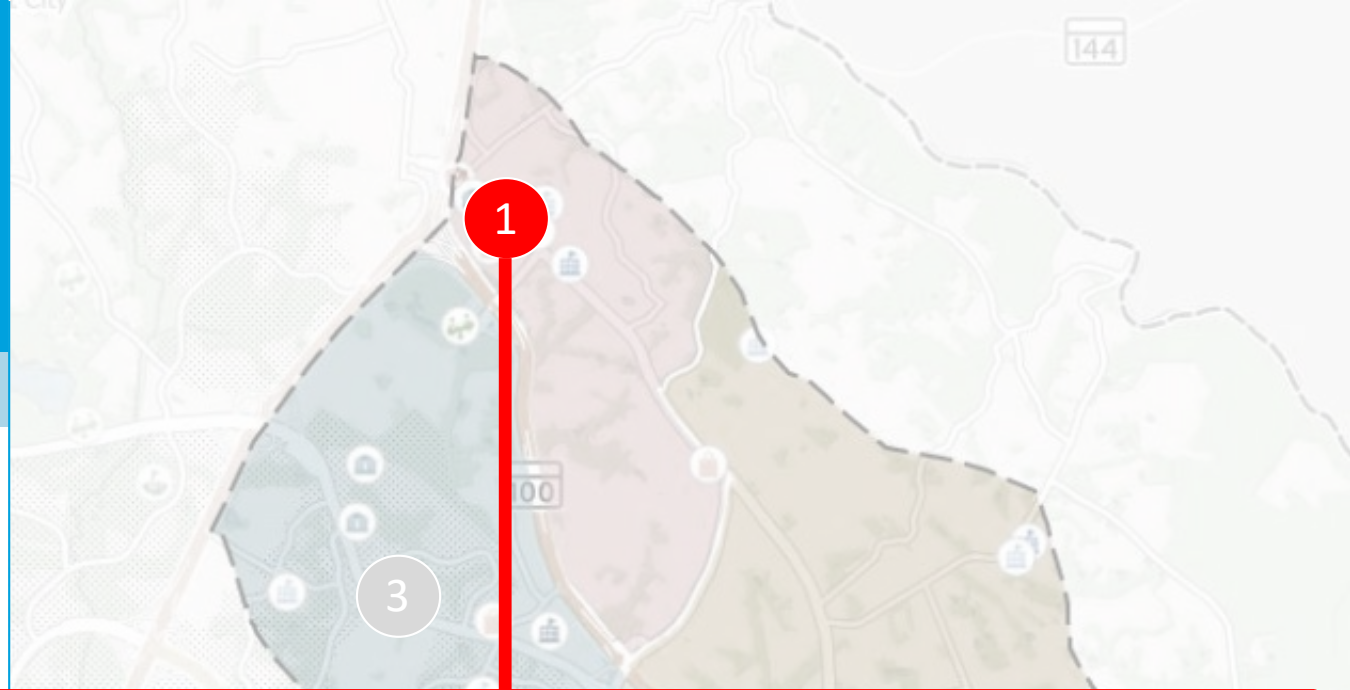
4

Snowden River Parkway at MD 100
Status: Concept Development



5

Lark Brown Road to Mayfield Avenue
Status: Concept Development



Improvement Concepts Traffic Operations and Safety



1

Long Gate Parkway to US 29
Status: Design refinement and utility relocation on



2

Old Montgomery Road to Brightfield Road
Status: Design ongoing



3

Red Branch Road to Phelps Luck Drive
Status: Concept Development



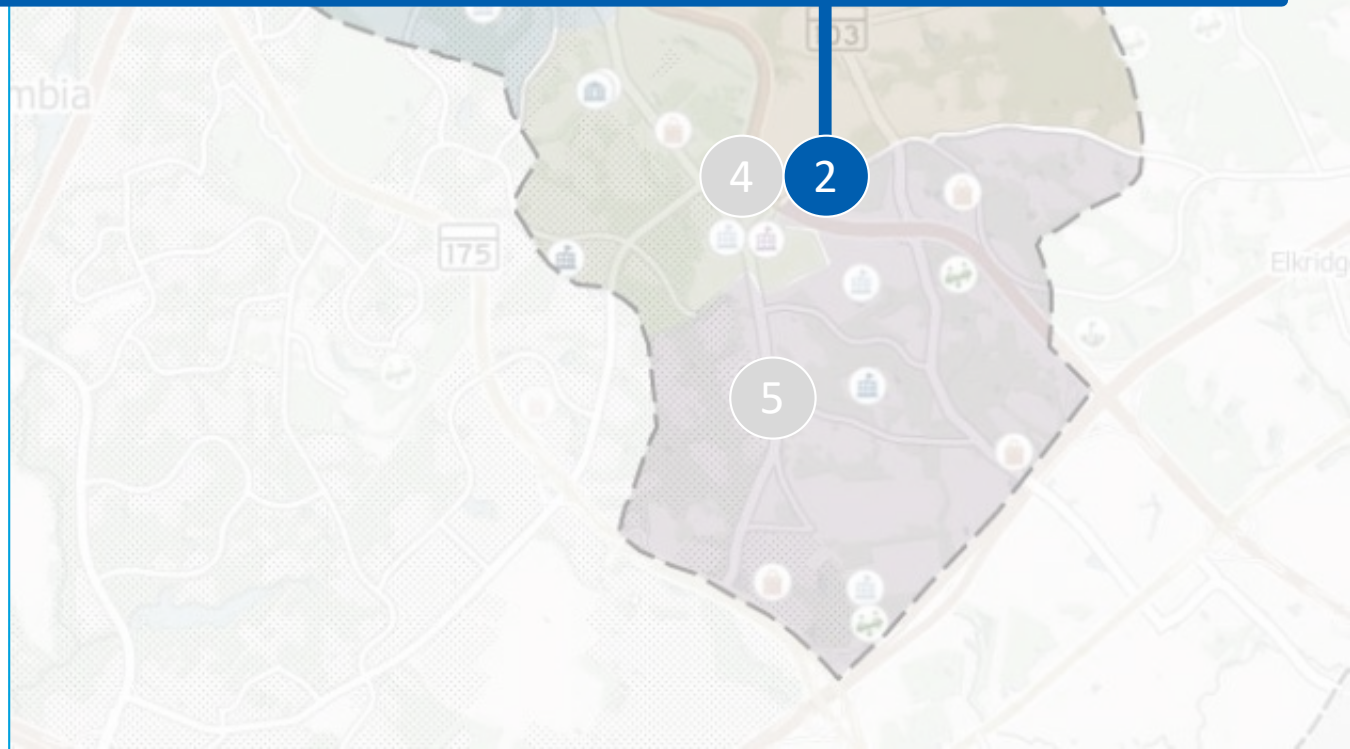
4

Snowden River Parkway at MD 100
Status: Concept Development



5

Lark Brown Road to Mayfield Avenue
Status: Concept Development



Improvement Concepts



MAR 10

MAR 10

MAR 10

MAR 10

MAR 108

5 Status: Concept Development

Improvement Concepts Traffic Operations and Safety



1

Long Gate Parkway to US 29
Status: Design refinement and utility relocation on



2

Old Montgomery Road to Brightfield Road
Status: Design ongoing



3

Red Branch Road to Phelps Luck Drive
Status: Concept Development



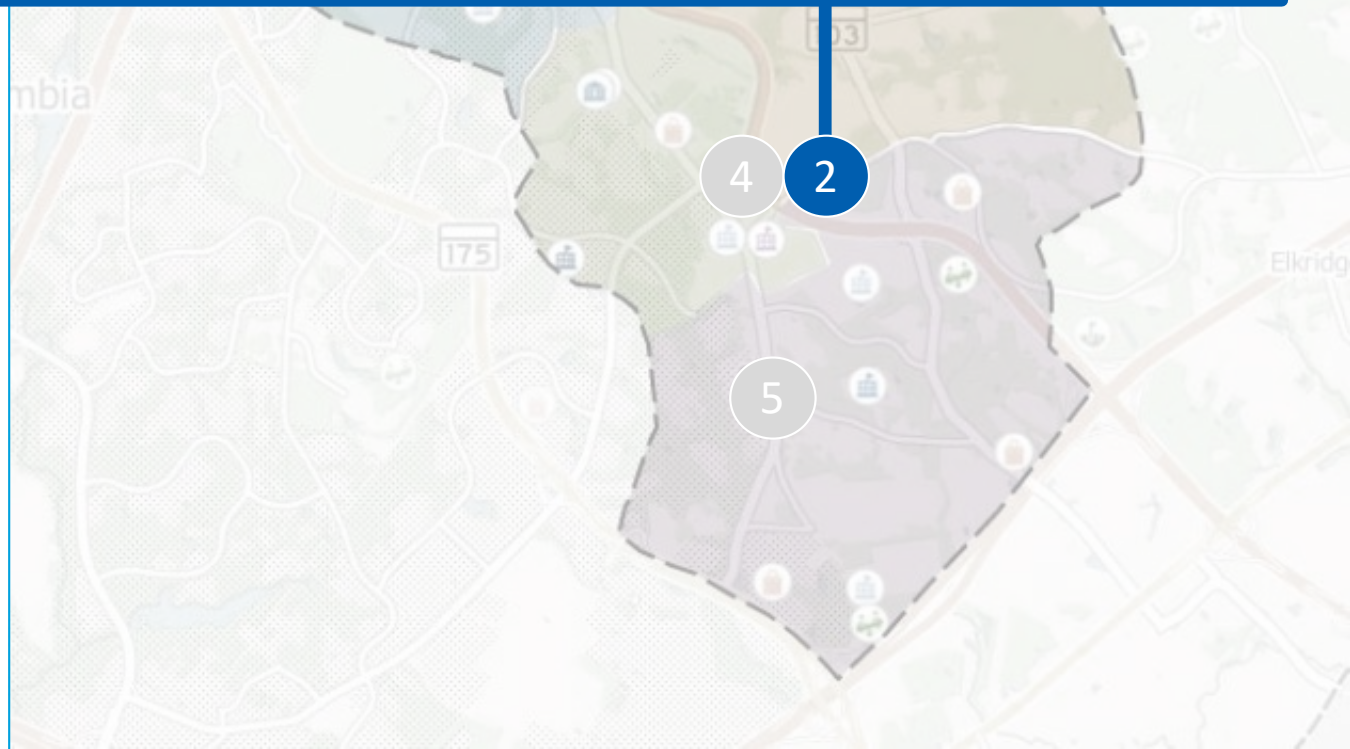
4

Snowden River Parkway at MD 100
Status: Concept Development



5

Lark Brown Road to Mayfield Avenue
Status: Concept Development



Improvement Concepts Traffic Operations and Safety



- 1 Long Gate Parkway to US 29
Status: Design refinement and utility relocation ongoing



- 2 Old Montgomery Road to Brightfield Road
Status: Design ongoing



- 3 Red Branch Road to Phelps Luck Drive
Status: Concept Development



- 4 Snowden River Parkway at MD 100
Status: Concept Development



- 5 Lark Brown Road to Mayfield Avenue
Status: Concept Development





MARY AND
108

RED BRICK RD.

PHELPS LUCK DR.



INSTALL
SIDE PATH

CONNECT TO
ORCHARD
GREEN
TOT LOT
PATH

REMOVE
UNNEEDED
ACCELERATION
LANE

CONNECT TO
NEIGHBORHOOD
PATH

MARY
10
MARY
10
MARY
10
MARY
10
MARY
10

Improvement Concepts Traffic Operations and Safety



1 Long Gate Parkway to US 29
Status: Design refinement and utility relocation ongoing



2 Old Montgomery Road to Brightfield Road
Status: Design ongoing



3 Red Branch Road to Phelps Luck Drive
Status: Concept Development



4 Snowden River Parkway at MD 100
Status: Concept Development



5 Lark Brown Road to Mayfield Avenue
Status: Concept Development



Improvement Concepts Traffic Operations and Safety



- 1 Long Gate Parkway to US 29
Status: Design refinement and utility relocation ongoing



- 2 Old Montgomery Road to Brightfield Road
Status: Design ongoing



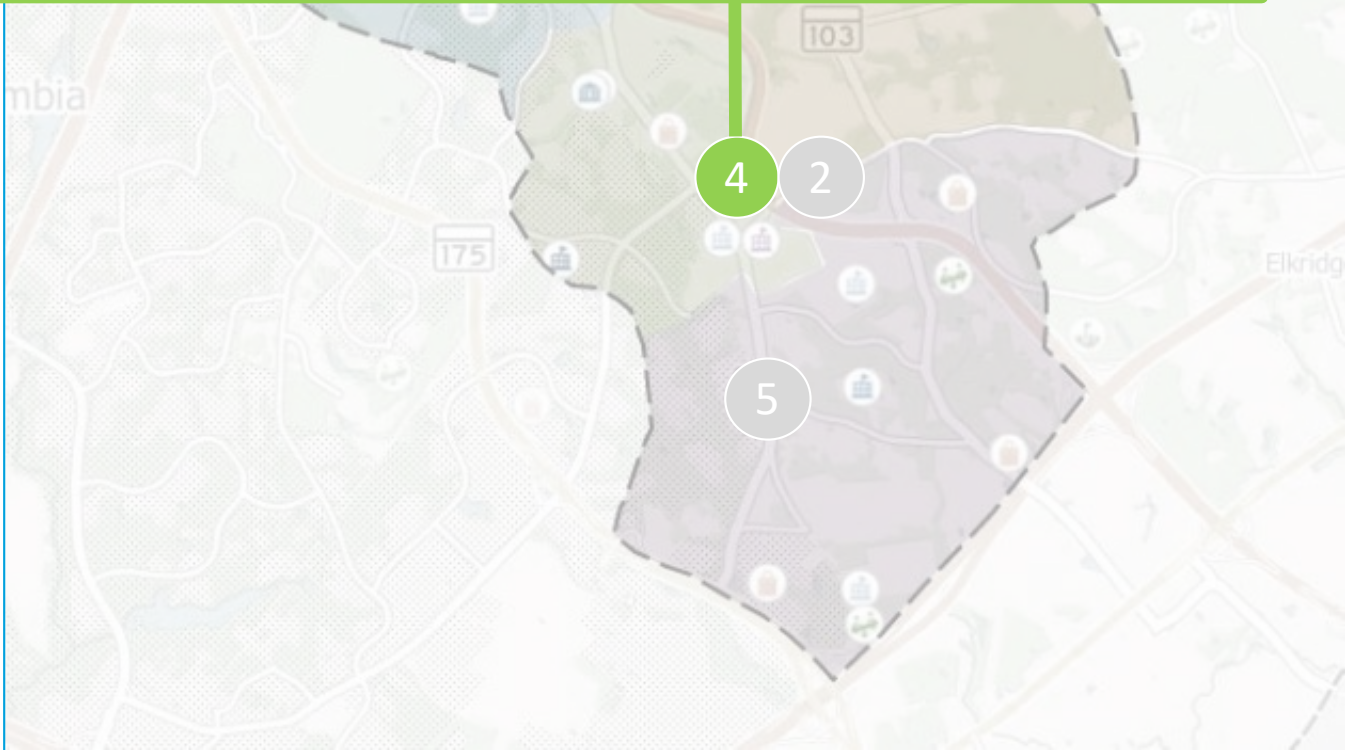
- 3 Red Branch Road to Phelps Luck Drive
Status: Concept Development



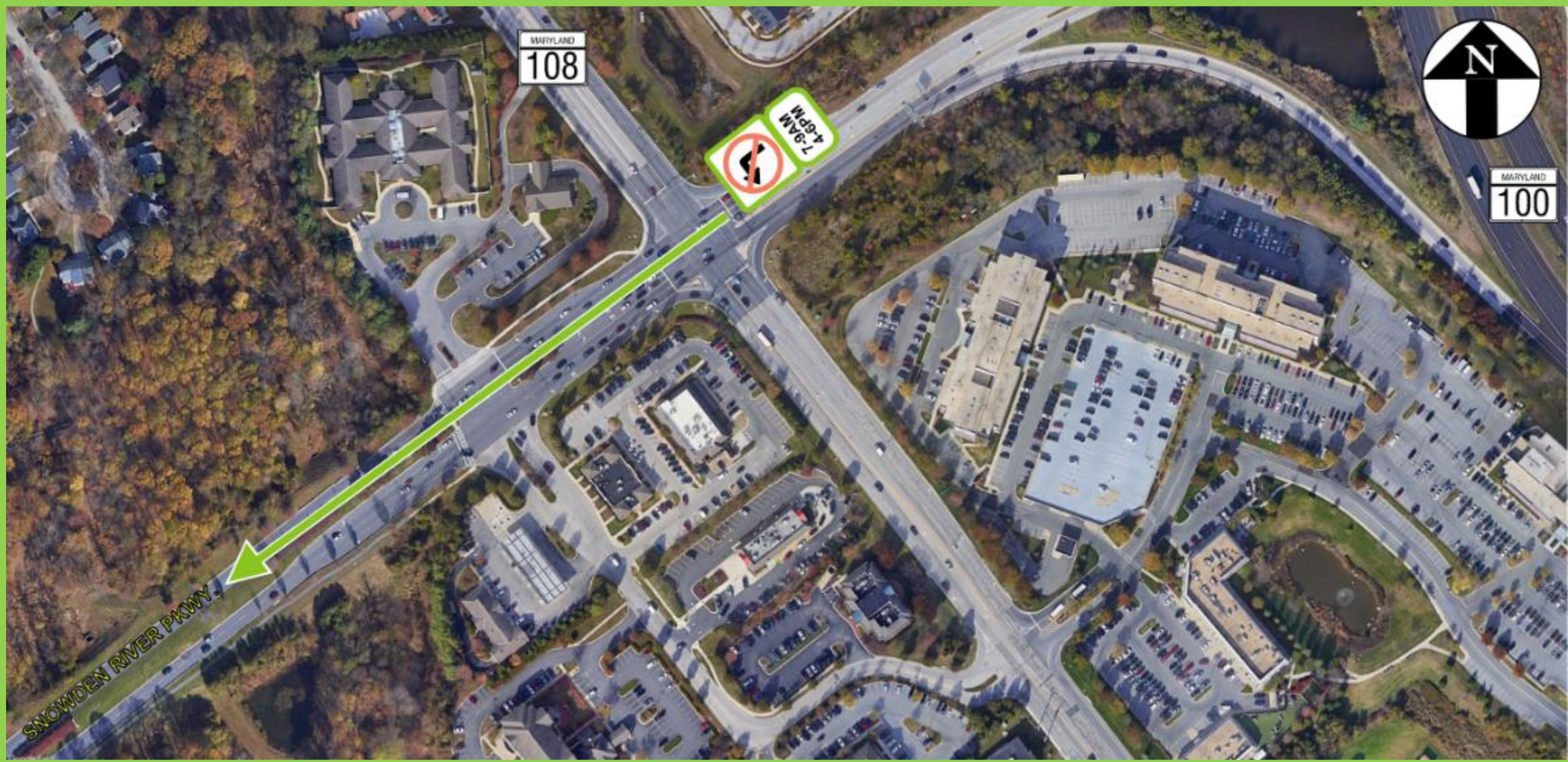
- 4 Snowden River Parkway at MD 100
Status: Concept Development



- 5 Lark Brown Road to Mayfield Avenue
Status: Concept Development



Improvement Concepts



MAR 108 5 Status: Concept Development

Improvement Concepts Traffic Operations and Safety



- 1 Long Gate Parkway to US 29
Status: Design refinement and utility relocation ongoing



- 2 Old Montgomery Road to Brightfield Road
Status: Design ongoing



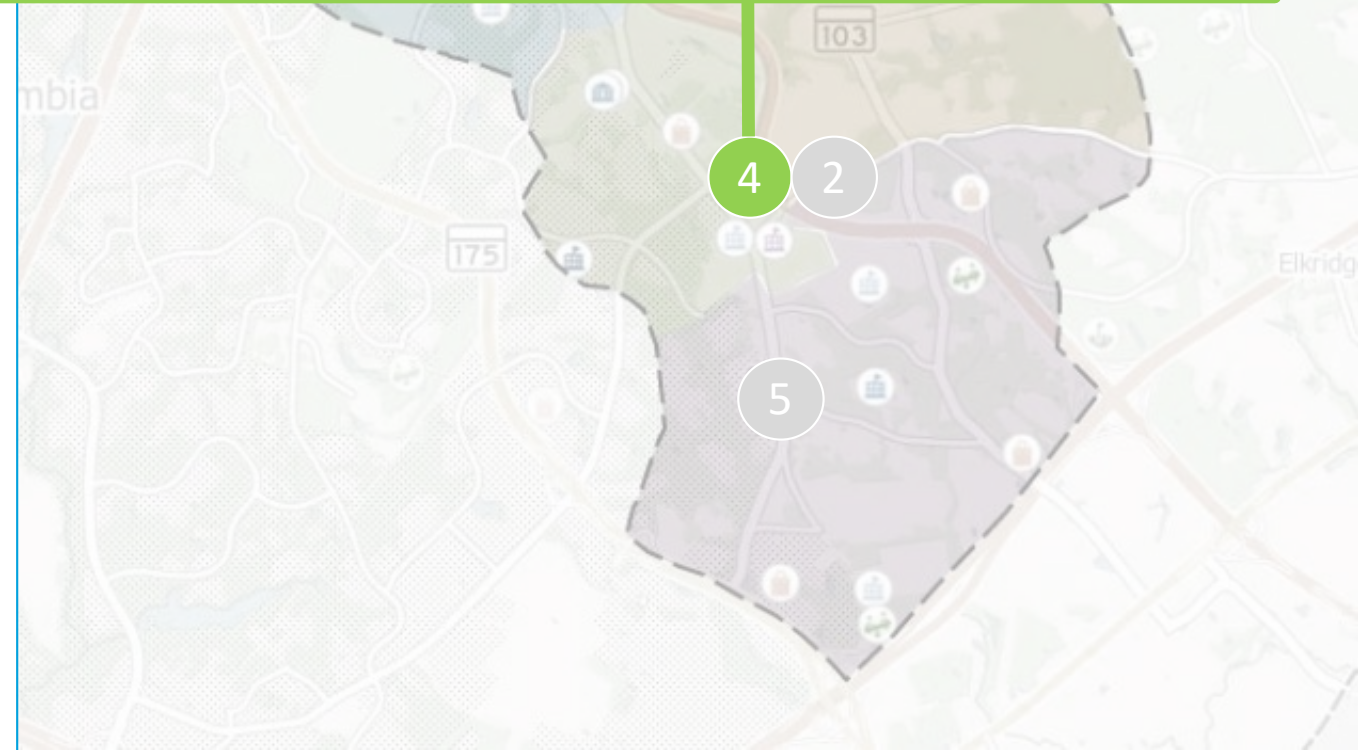
- 3 Red Branch Road to Phelps Luck Drive
Status: Concept Development



- 4 Snowden River Parkway at MD 100
Status: Concept Development



- 5 Lark Brown Road to Mayfield Avenue
Status: Concept Development



Improvement Concepts Traffic Operations and Safety



- 1 Long Gate Parkway to US 29
Status: Design refinement and utility relocation ongoing



- 2 Old Montgomery Road to Brightfield Road
Status: Design ongoing



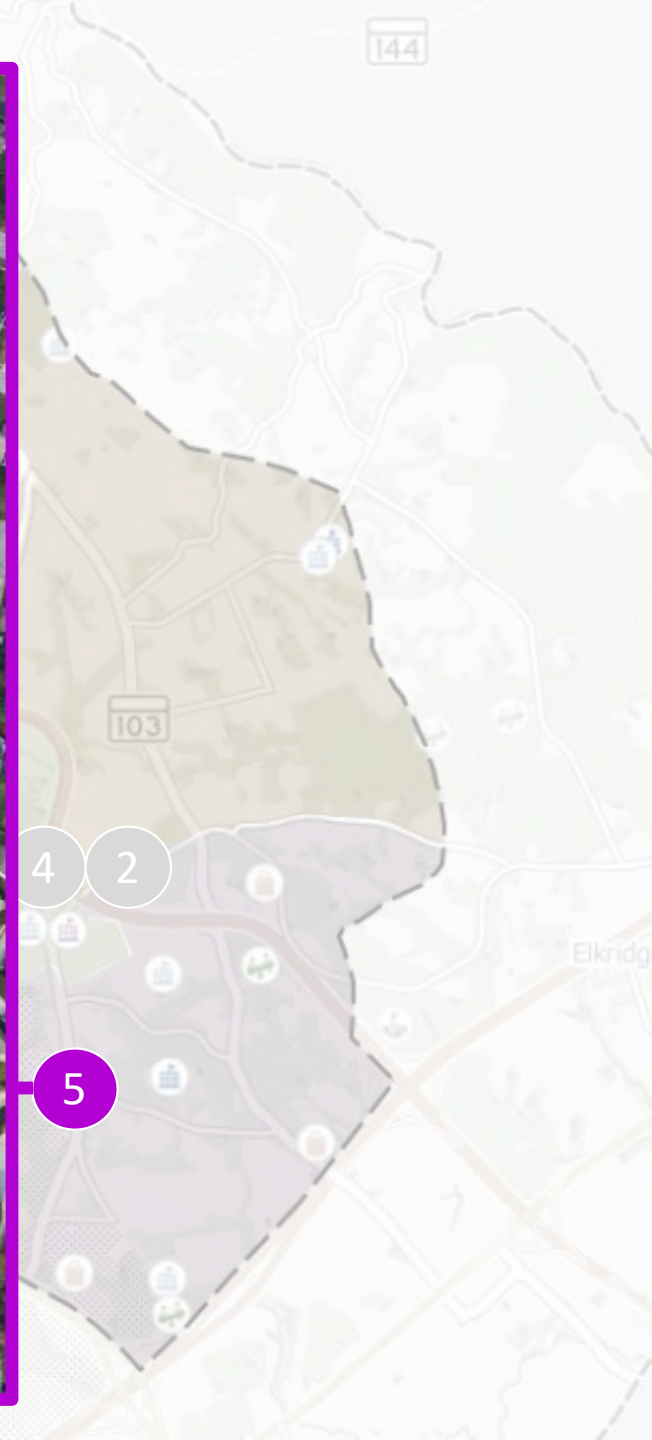
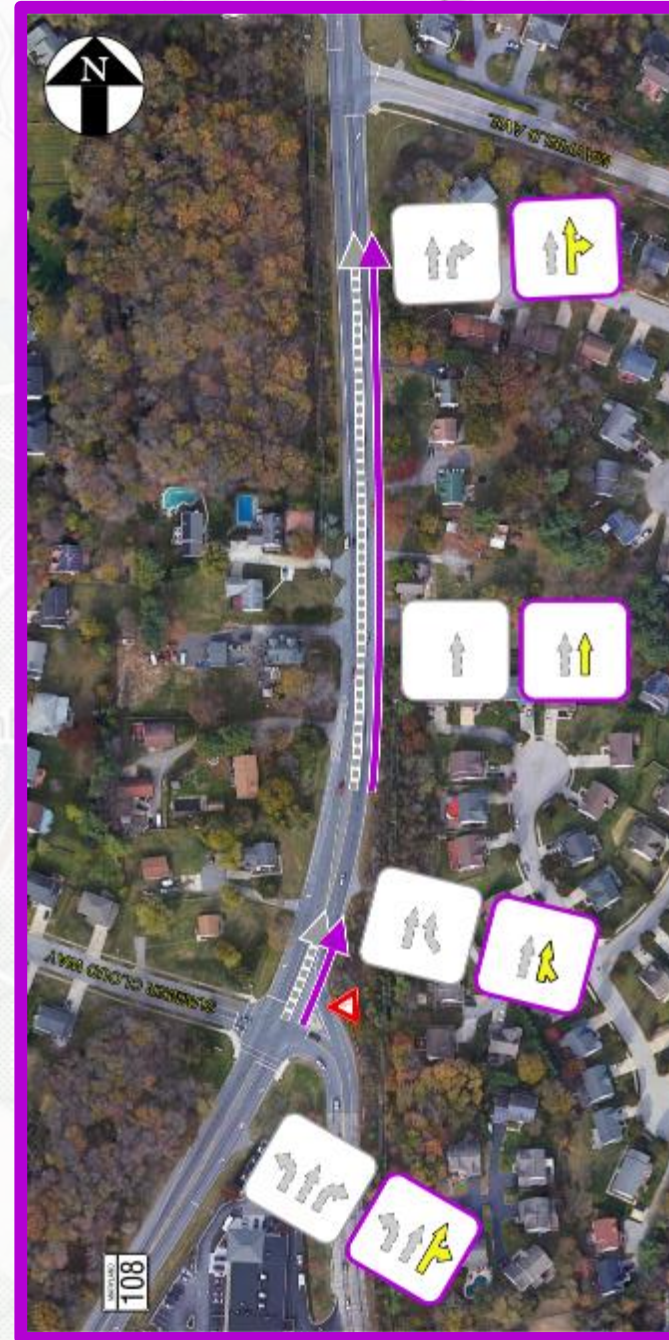
- 3 Red Branch Road to Phelps Luck Drive
Status: Concept Development



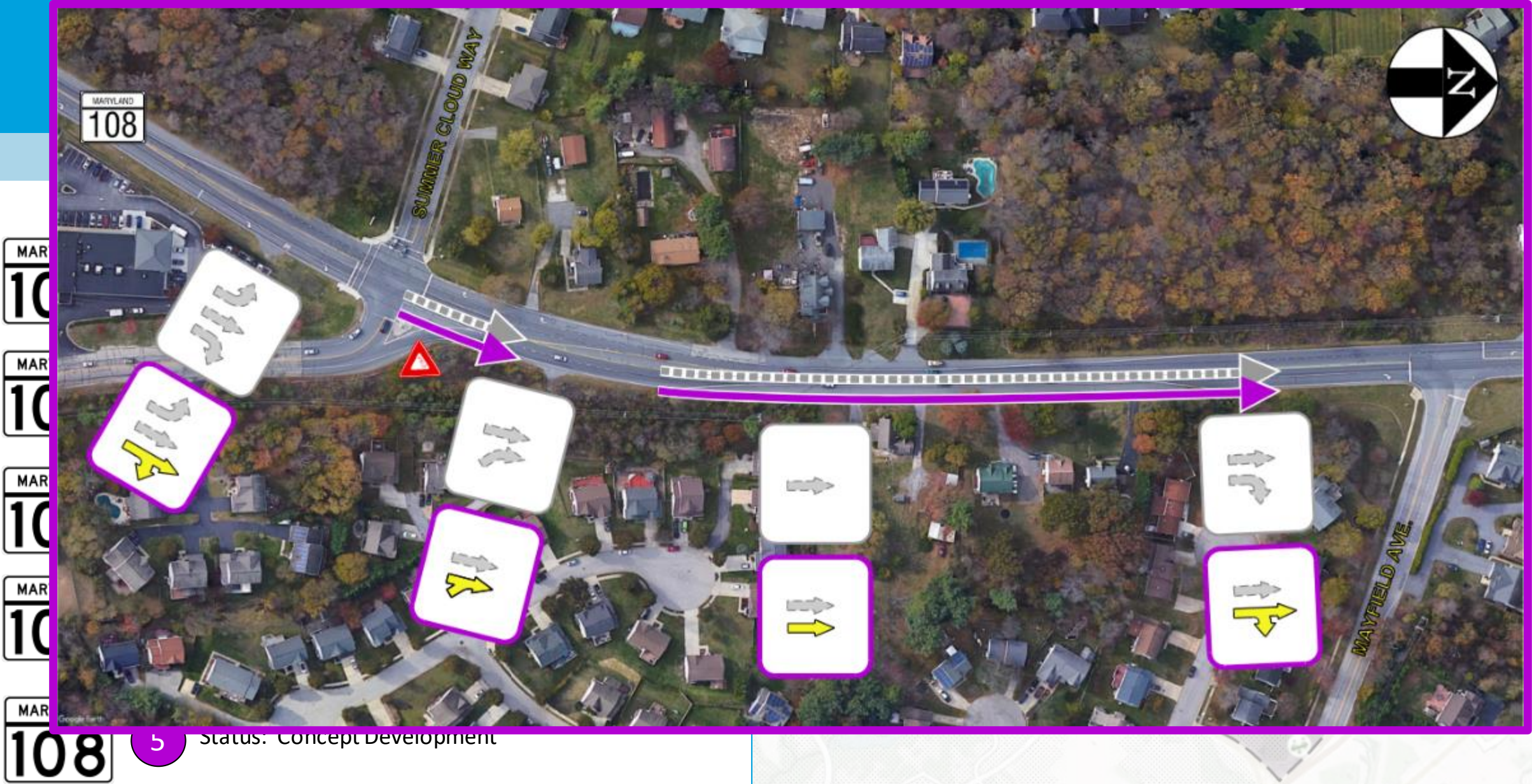
- 4 Snowden River Parkway at MD 100
Status: Concept Development



- 5 Lark Brown Road to Mayfield Avenue
Status: Concept Development



Improvement Concepts



5 Status: Concept Development

Improvement Concepts Traffic Operations and Safety



- 1 Long Gate Parkway to US 29
Status: Design refinement and utility relocation ongoing



- 2 Old Montgomery Road to Brightfield Road
Status: Design ongoing



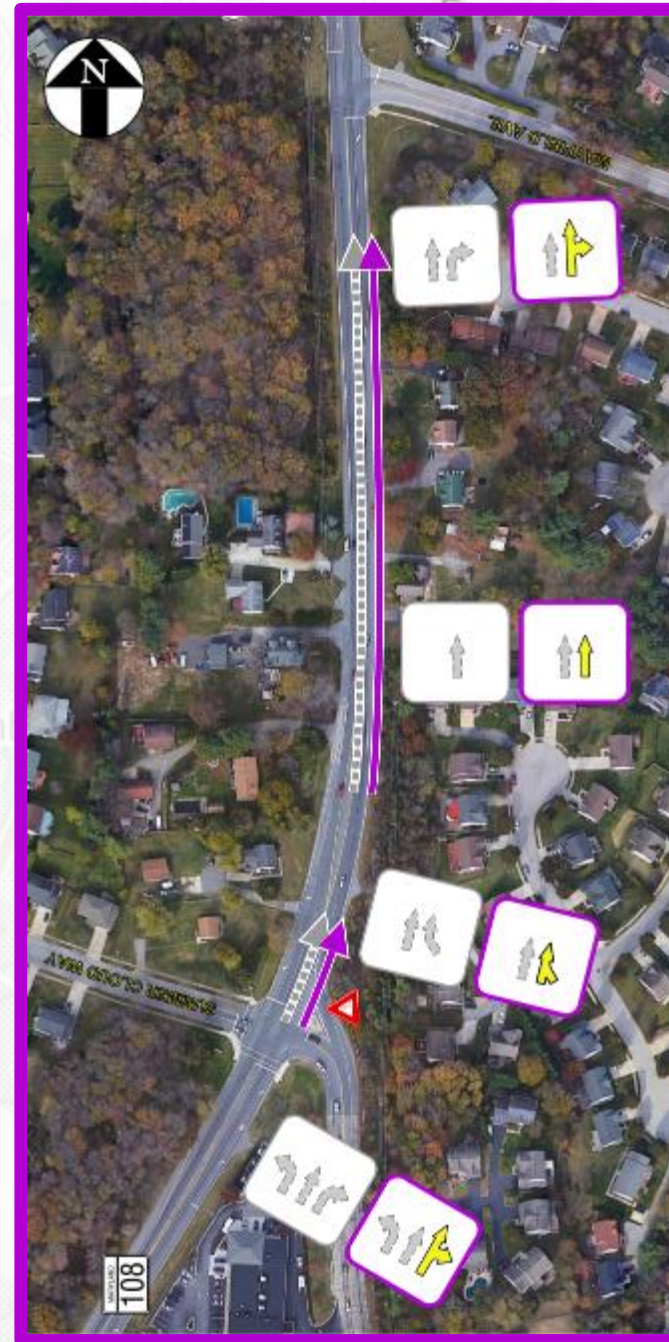
- 3 Red Branch Road to Phelps Luck Drive
Status: Concept Development



- 4 Snowden River Parkway at MD 100
Status: Concept Development

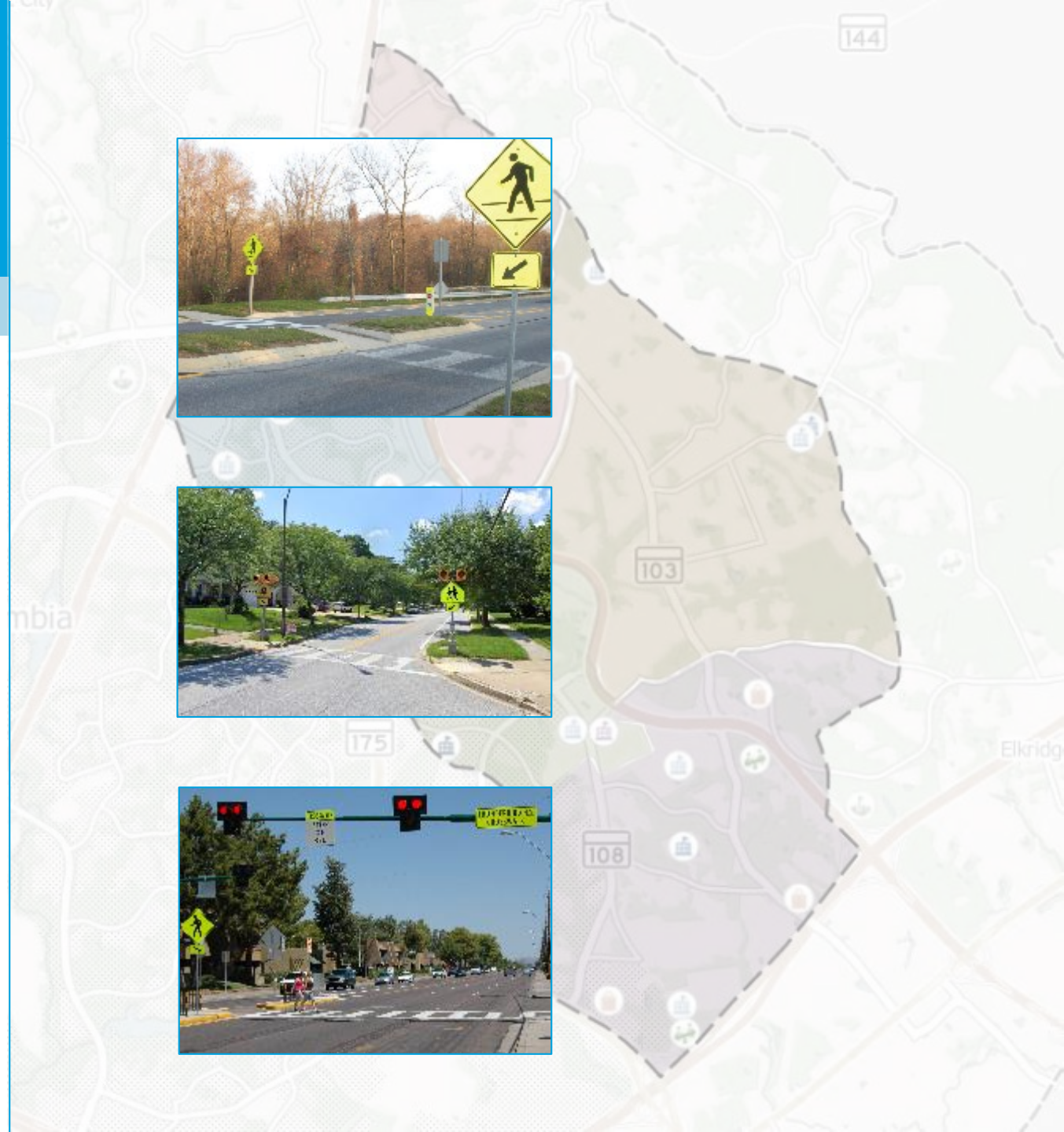


- 5 Lark Brown Road to Mayfield Avenue
Status: Concept Development



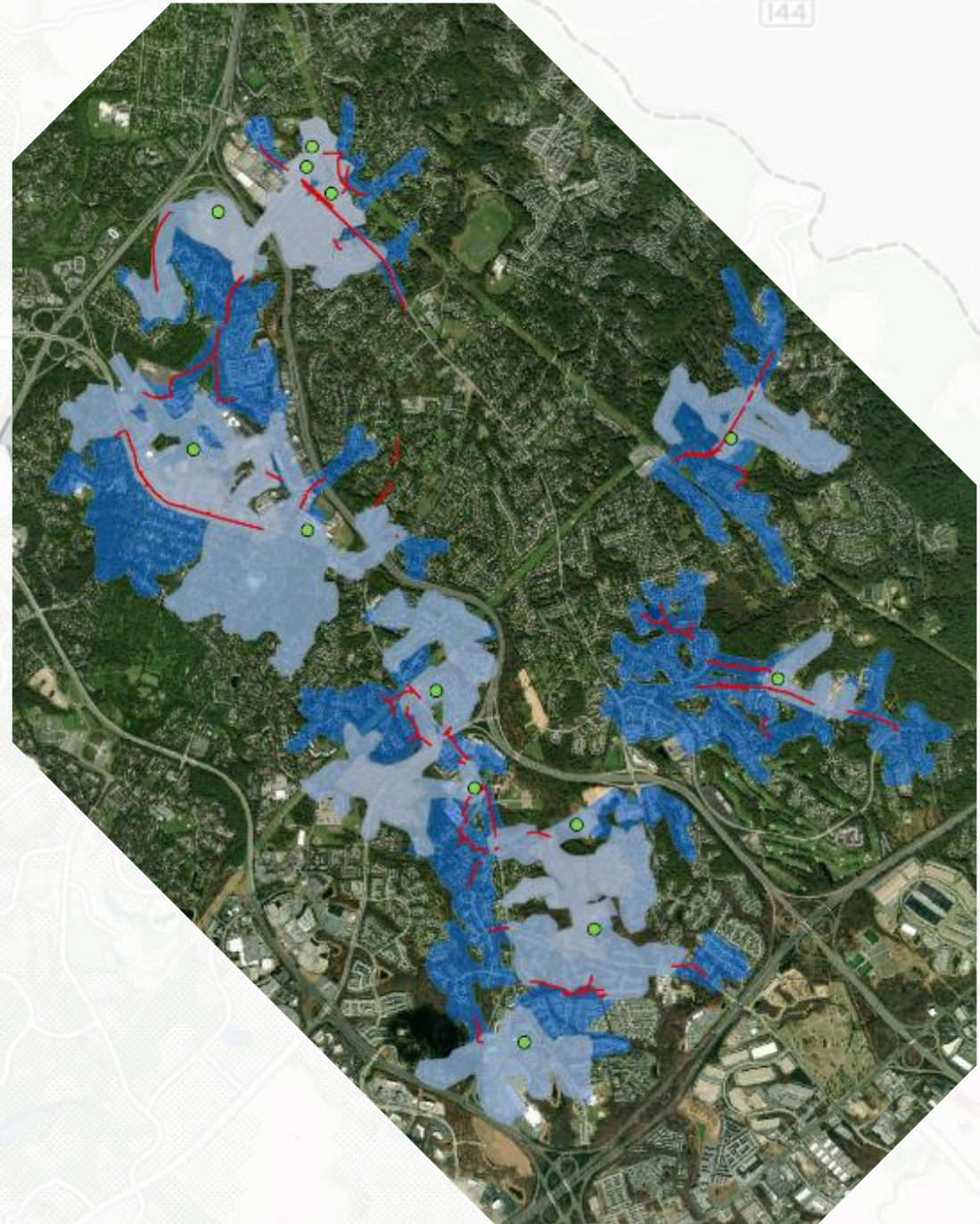
Improving Safety and Connectivity for Bicyclists & Pedestrians

- Introduce more, new and aggressive tools to slow traffic and give priority and increased visibility to bicyclists and pedestrians.
- Prioritize gaps in sidewalk and path network that have a high return on investment:
 - Connect the greatest number of households to nearby schools, parks and shopping centers.
 - Right of way or county owned property already available.
 - Avoid environmental and utility impacts.



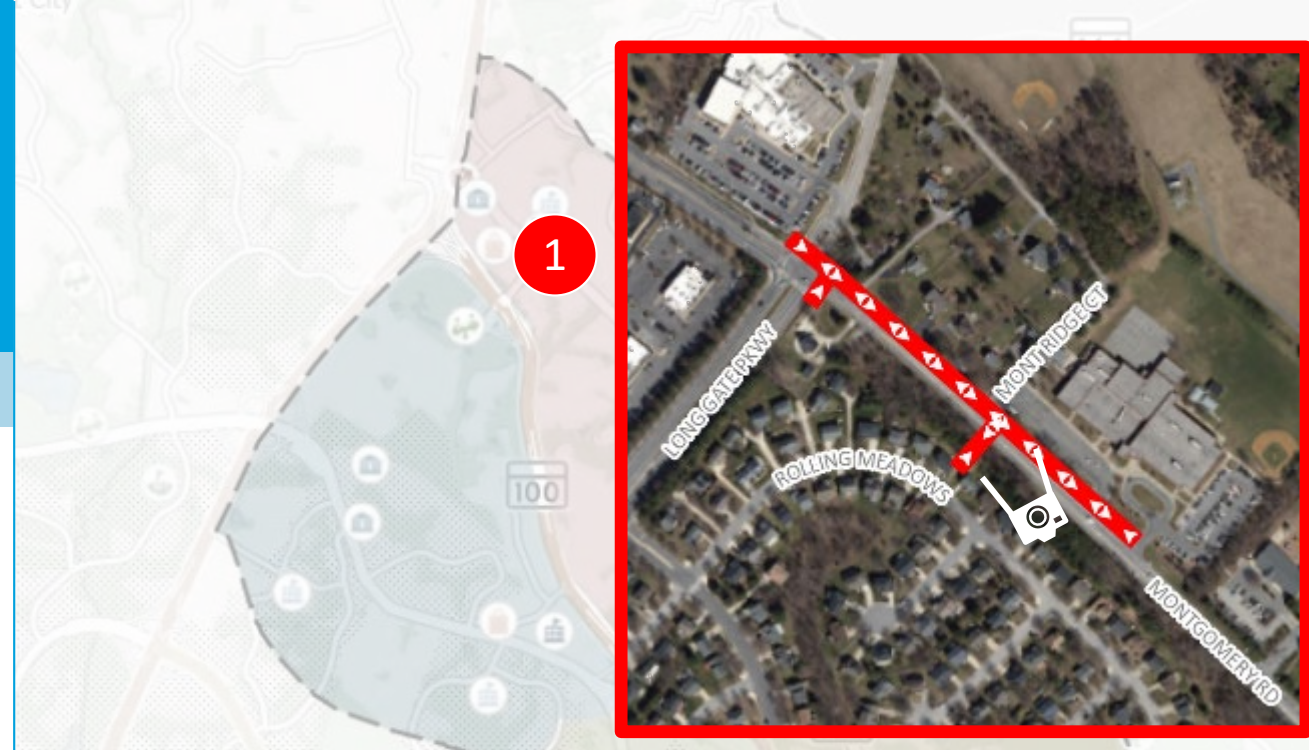
Improving Safety and Connectivity for Bicyclists & Pedestrians

- Data driven process to identify increases in walkability within 1-mile of schools, etc. with additional sidewalk, pathways or improved crossings.
- Used 44 improvement concepts from WalkHoward, BikeHoward and other studies
- Counted the number of housing units within each existing and improvement-scenario walkshed to find how many units each scenario would add to each walkshed
- Calculated cost per additional household based on preliminary cost estimates for each project



Promising Potential Improvements for Bicyclists & Pedestrians

- 1 Construct a sidewalk along the north side of MD 103 from Long Gate Pkwy to Ellicott Mills Middle School, with a signalized crosswalk across MD 103 at a location to be determined across that stretch (connects 338 additional homes to Ellicott Mills Middle School)



Promising Potential Improvements for Bicyclists & Pedestrians

1

Construct a sidewalk along the north side of MD 103 from Long Gate Pkwy to Ellicott Mills Middle School, with a signalized crosswalk across MD 103 at a location to be determined across that stretch (connects 338 additional homes to Ellicott Mills Middle School)

2

Construct a pathway from Red Branch Road to Orchard Green (connects additional 268 households to the Red Branch Road area)



Promising Potential Improvements for Bicyclists & Pedestrians

1

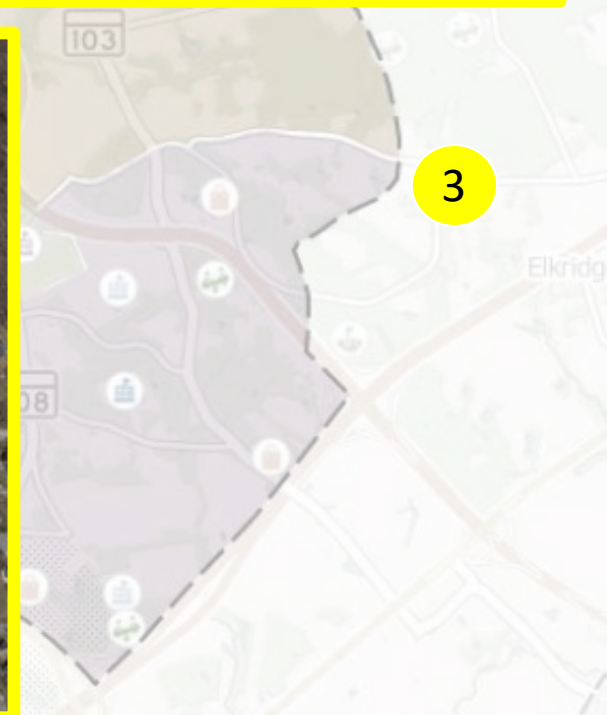
Construct a sidewalk along the north side of MD 103 from Long Gate Pkwy to Ellicott Mills Middle School, with a signalized crosswalk across MD 103 at a location to be determined across that stretch (connects 338 additional homes to Ellicott Mills Middle School)

2

Construct a pathway from Red Branch Road to Orchard Green (connects additional 268 households to the Red Branch Road area)

3

Construct sidewalk on the north side of Montgomery Road between Parkview Court and Marshalee Drive, and crosswalks at the intersection of Montgomery Road and Marshalee Drive (connects 186 additional households to Rockburn Elementary School and Rockburn Park)



Promising Potential Improvements for Bicyclists & Pedestrians

1

Construct a sidewalk along the north side of MD 103 from Long Gate Pkwy to Ellicott Mills Middle School, with a signalized crosswalk across MD 103 at a location to be determined across that stretch (connects 338 additional homes to Ellicott Mills Middle School)

2

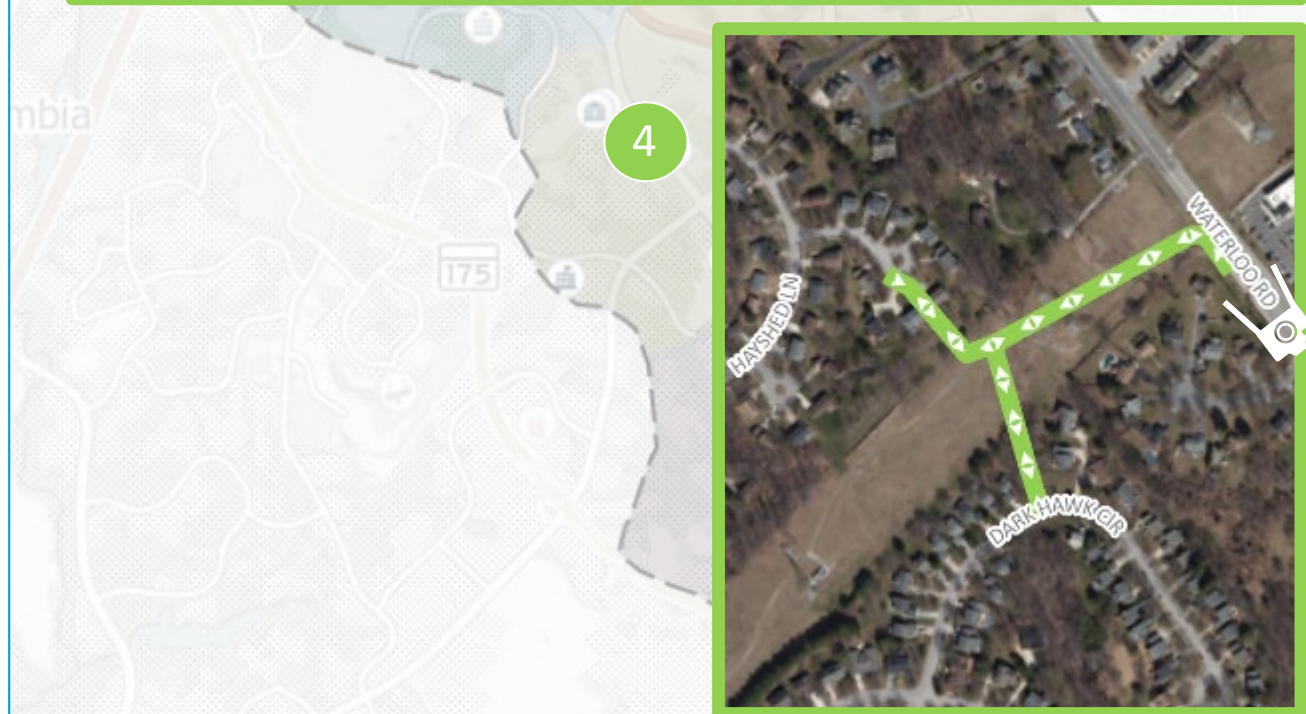
Construct a pathway from Red Branch Road to Orchard Green (connects additional 268 households to the Red Branch Road area)

3

Construct sidewalk on the north side of Montgomery Road between Parkview Court and Marshalee Drive, and crosswalks at the intersection of Montgomery Road and Marshalee Drive (connects 186 additional households to Rockburn Elementary School and Rockburn Park)

4

Construct a pathway between existing sidewalk along MD 108 near Brothers Partnership, Dark Hawk Circle, and Wood Staff Way (connects 264 additional households to MD 108 and the Shipley's Grant area)



Promising Potential Improvements for Bicyclists & Pedestrians

1

Construct a sidewalk along the north side of MD 103 from Long Gate Pkwy to Ellicott Mills Middle School, with a signalized crosswalk across MD 103 at a location to be determined across that stretch (connects 338 additional homes to Ellicott Mills Middle School)

2

Construct a pathway from Red Branch Road to Orchard Green (connects additional 268 households to the Red Branch Road area)

3

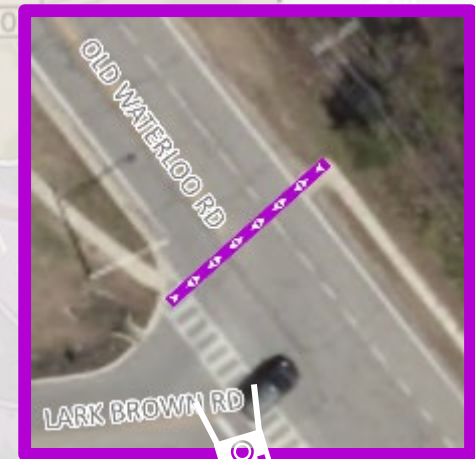
Construct sidewalk on the north side of Montgomery Road between Parkview Court and Marshalee Drive, and crosswalks at the intersection of Montgomery Road and Marshalee Drive (connects 186 additional households to Rockburn Elementary School and Rockburn Park)

4

Construct a pathway between existing sidewalk along MD 108 near Brothers Partnership, Dark Hawk Circle, and Wood Staff Way (connects 264 additional households to MD 108 and the Shipley's Grant area)

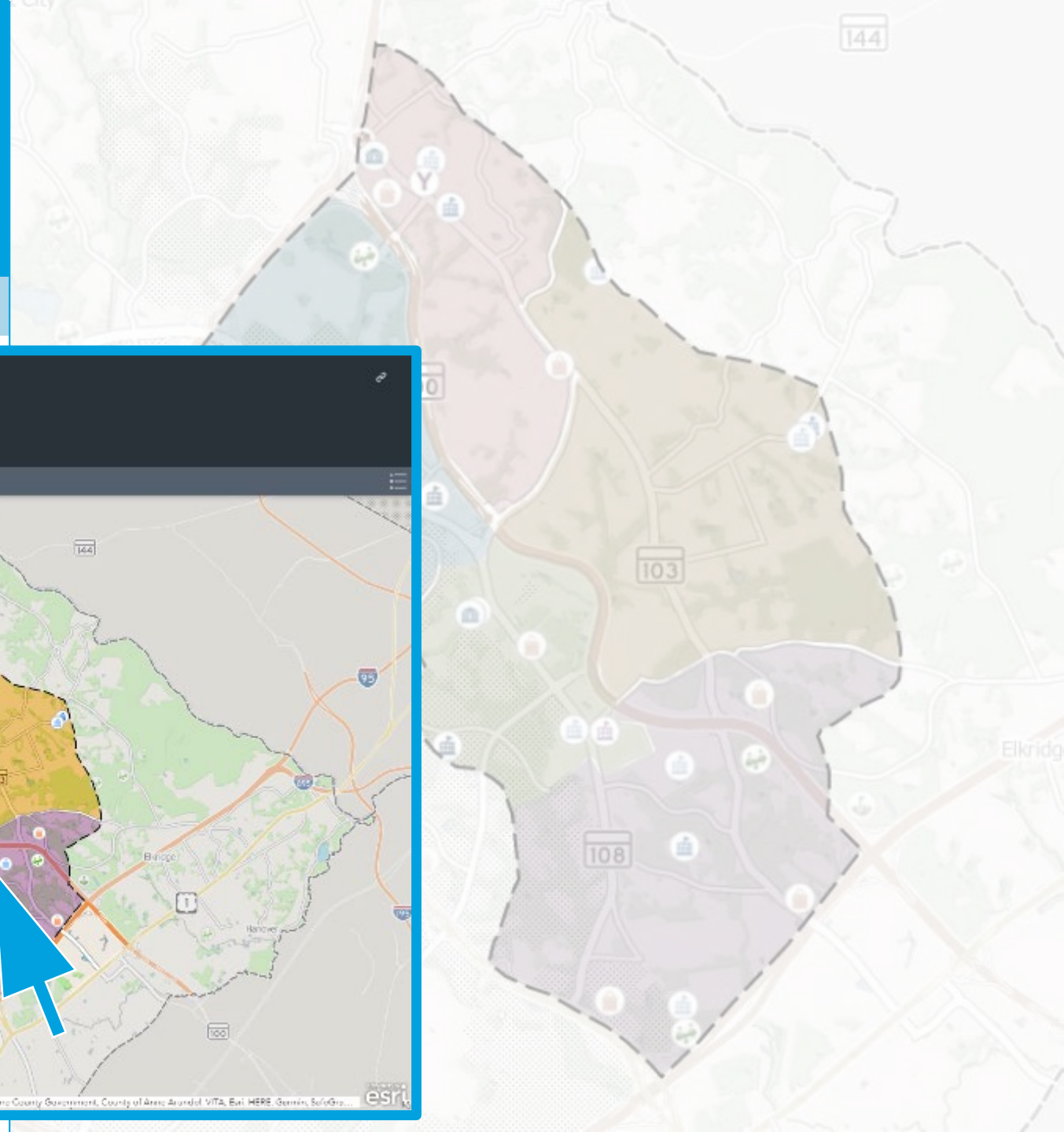
5

Fill sidewalk gaps and make improvements along Old Waterloo Road and Lark Brown Road, including traffic calming, bike lanes, and a crosswalk with signal or beacons across Old Waterloo Road at Lark Brown Road (connects 343 additional households to the Gateway Overlook area)



5

Using the Web Tool and Online Survey



MD103/MD104/MD108 Corridor Study

Welcome Southern Sub Area Central Sub Area Eastern Sub Area Western Sub Area Northern Sub Area

Welcome

1 About the Study

MARYLAND 103 / MARYLAND 104 / MARYLAND 108

Welcome! Use this Story Map to explore the MD-103/MD-104/MD-108 Corridor Study area wide information can be found in the numbered list below, including Daily Traffic Volumes, Peak Hour Congestion, and Safety data. To review sub-area specific information, use the labeled tabs above. You can also click on a sub-area to the right and follow the link listed in the pop-up box.

2 Daily Traffic Volumes

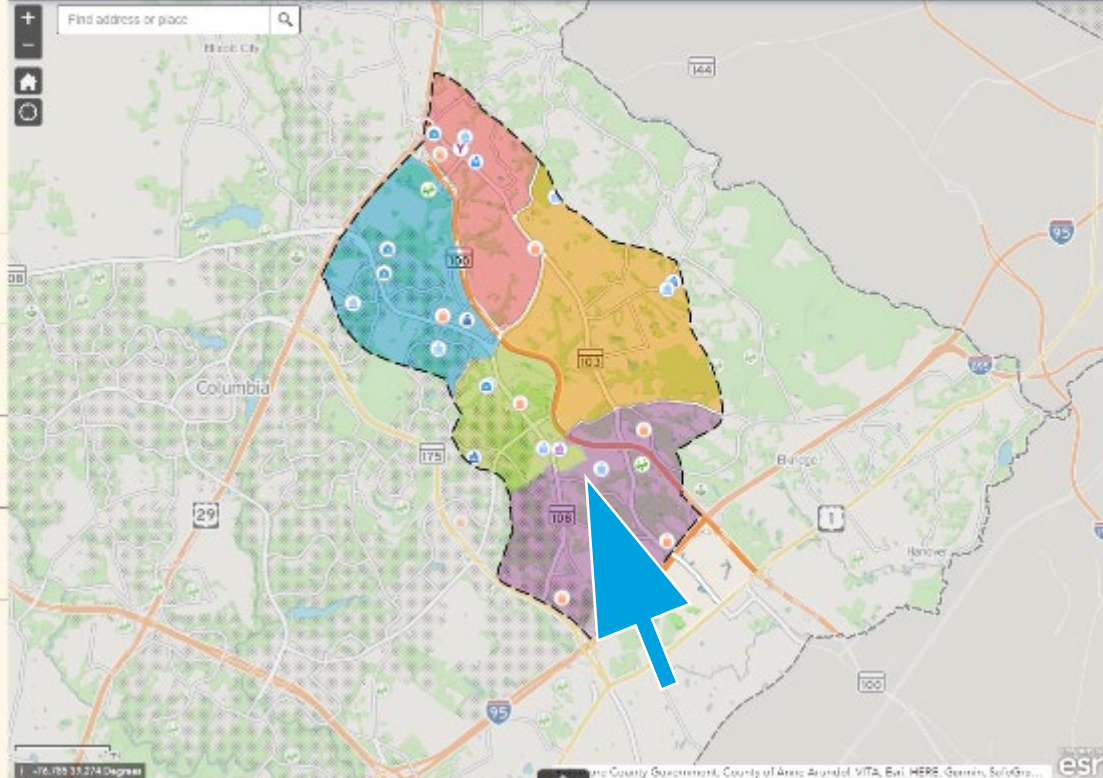
3 AM Congestion

4 PM Congestion

5 Safety

6 Bike and Pedestrian Infrastructure

7 Transit



Using the Web Tool and Online Survey

MD103/MD104/MD108 Corridor Study

Welcome Southern Sub Area Central Sub Area Eastern Sub Area Western Sub Area Northern Sub Area

Southern Sub Area

1 Southern Study Area

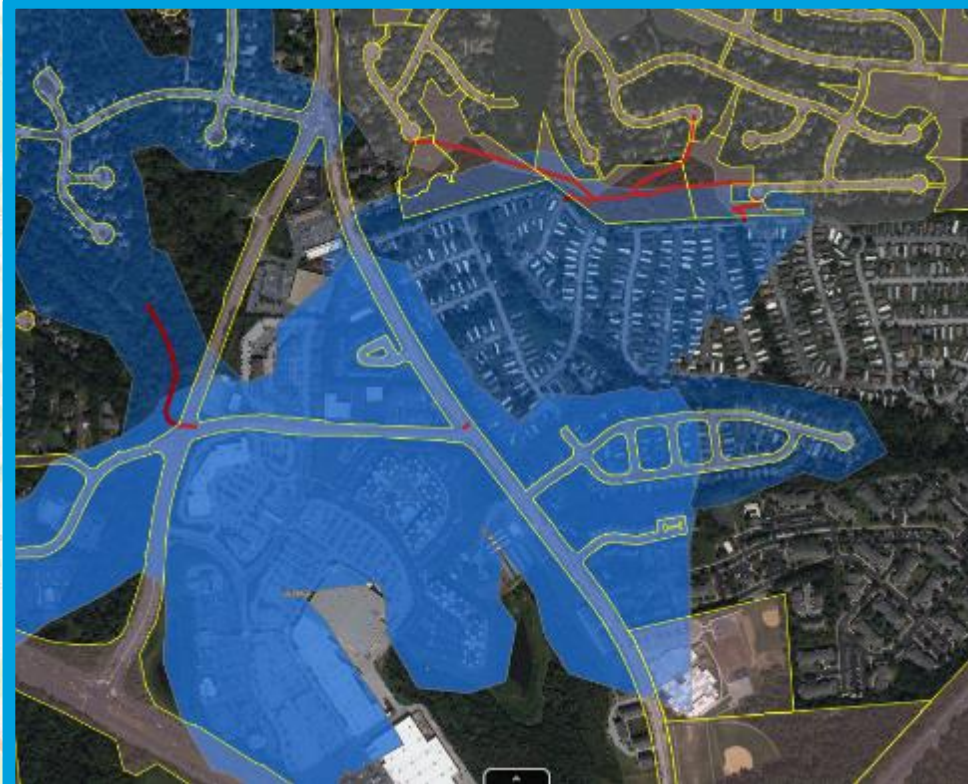
The Southern Sub Area is shown in the map to the right. It extends along MD 108 from MD 175 to Maryland School for the Deaf, along MD 108 from I-495 to Brightfield Road, and between Montgomery Road and Marshalee Drive east of MD 108. Communities in this sub area include Mayfield, Deep Run, Woodland Village, Sherwood Crossing, Rockburn Estates, and Marshalee.

[Click here to share your preferences and priorities for the Southern Sub Area.](#)

For pedestrian safety and infrastructure, such as bollards, pedestrian signals, bumpouts, or median refuges, in addition to pavement markings, examples of these types of measures are shown below.

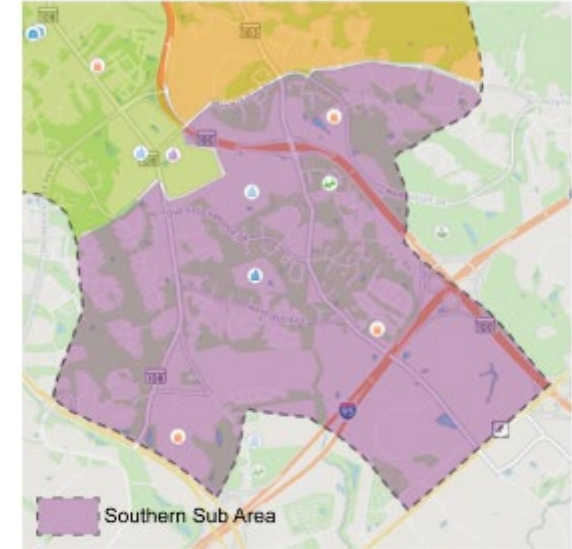


2 Bike and Pedestrian Walkshed



Southern Sub Area

MD 103/104/108 Strategic Multimodal Corridor Study



1. Please rank the following concerns in the Southern sub area:

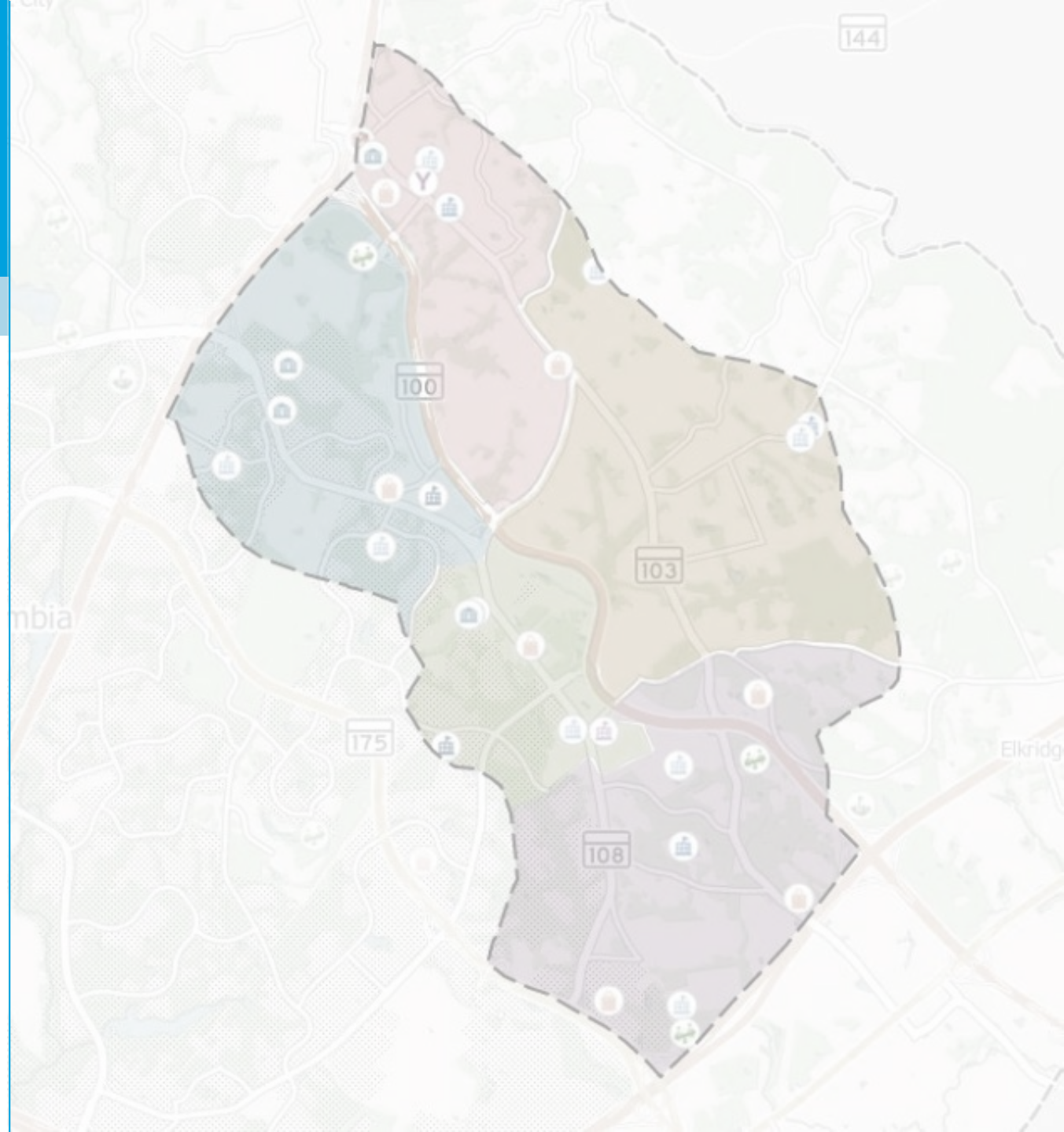
- Pedestrian travel
- Traffic safety for all modes
- Traffic congestion
- Bicycle travel

2. Please indicate which school in the Southern sub area has more or less need for bicycle and pedestrian access improvements.

	Low Need for Improvements	Medium Need for Improvements	High Need for Improvements
Mayfield Woods Middle School	<input type="radio"/>	<input type="radio"/>	<input type="radio"/>
Beltsville Springs Elementary School	<input type="radio"/>	<input type="radio"/>	<input type="radio"/>
Bobby Overlook (All levels) Middle School/Elementary School	<input type="radio"/>	<input type="radio"/>	<input type="radio"/>

Where do We Go From Here?

- Story Map and surveys open until Friday, February 12
- County and State agencies conducting technical review improvement recommendations
- Final recommendations anticipated Spring 2021
- Opportunities to fund improvements through county/state capital budget, Safe Routes to Schools and Bikeways grants, developer agreements, and school system cost-sharing



A photograph of a two-lane road with double yellow lines, receding into the distance. A white car is driving away from the viewer on the left side of the road. The road is flanked by trees and grass. The sky is overcast and grey. The text is overlaid on the center of the image.

For More Information

Project Manager: **David Cookson, Planning Manager**

Email: **transportation@howardcountymd.gov**

Story Map: **arcg.is/1qz9j9**